

V&V Reference Report

L2 ASCDS Version : 7.6.9

Observation 61214 - L2 Version 001
Chandra X-Ray Center

L2 Processing Date : Sep 15 2006

Contents

1	Front	2
2	OBI	3
2.1	OBI	3
2.1.1	Images	3
2.1.2	Bias	3
2.1.3	Parameters	4
2.1.4	Events	4
2.2	Compared Parameters	5
2.3	Aspect	6
2.4	Star Slots	8
2.5	FID Slots	8
A	Summary	9
A.1	Status	9
A.2	Comments	9

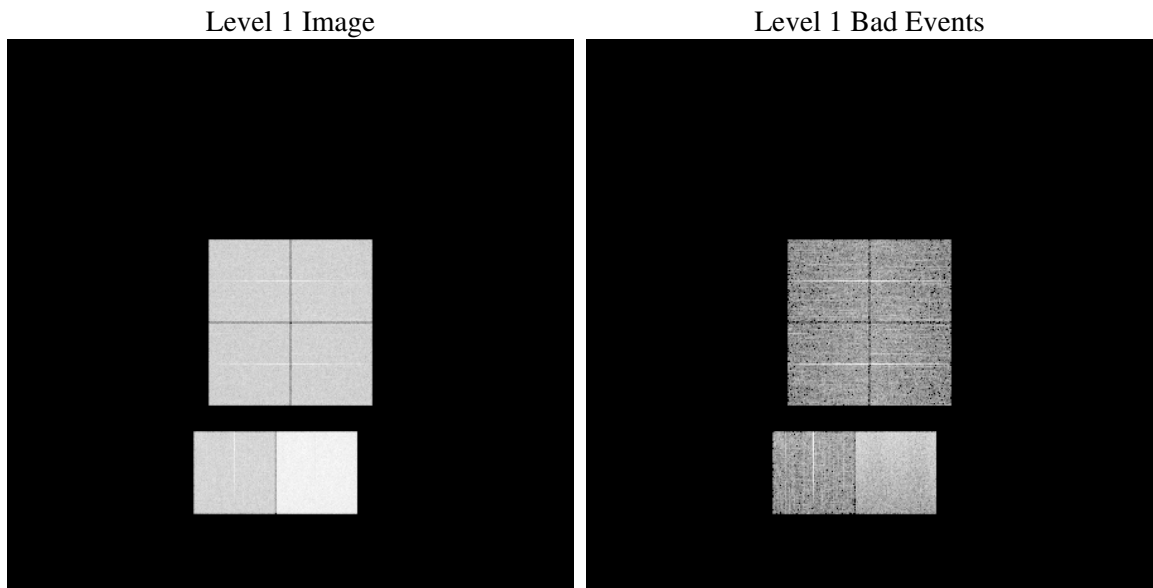
1 Front

seq_num	
obs_id	61214
title	ACIS-012367 diagnostics
observer	CHANDRA engineering request/realtime commanding
object	
dtcycle	0
cycle	P
ra_targ	0.0
dec_targ	0.0
ra_nom	179.00445836166
dec_nom	0.97171760582328
roll_nom	246.10251363886
revision	2
ontime	8459.2884333134
livetime	8352.1718295988
ontime0	3630.2716448307
ontime1	3646.5175263882
ontime2	3503.9538429379
ontime3	3542.681953609
ontime6	3834.578989327
ontime7	8459.2884333134
l2events	1301171

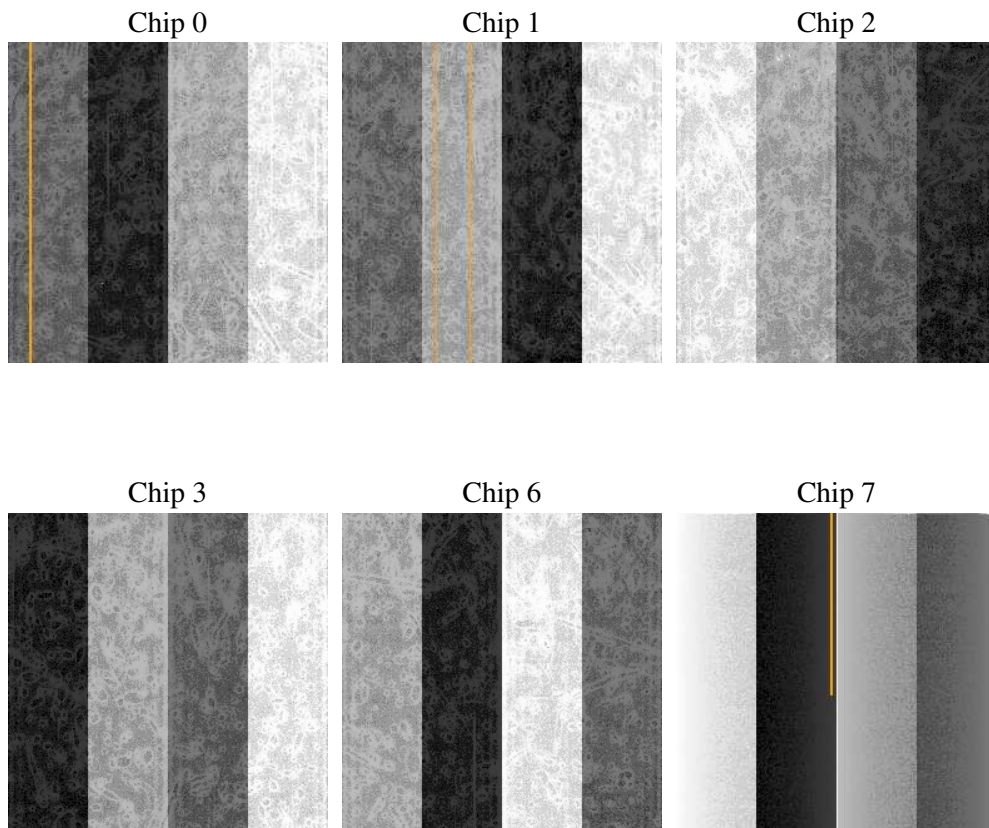
2 OBI

2.1 OBI

2.1.1 Images



2.1.2 Bias



2.1.3 Parameters

obi_num	0
ascdsver	7.6.9
caldbver	3.2.3
date	2006-09-15T06:32:59
revision	2

sched_exp_time	0.0
ontime	8462.2565447688
ontime0	3633.1987162828
ontime1	3649.403557837
ontime2	3506.7988343835
ontime3	3545.6911050677
ontime6	3837.382940799
ontime7	8462.2565447688
l1events	1558786

2.1.4 Events

	ccd 0	ccd 1	ccd 2	ccd 3	ccd 6	ccd 7
level 1 events	209563	210754	205612	208096	232101	492660
rejected events	26318	26640	27010	27349	30506	63721
rejected %	12%	12%	13%	13%	13%	12%

	ccd 0	ccd 1	ccd 2	ccd 3	ccd 6	ccd 7
grade 0 events	100869	101467	98893	101288	109760	76394
	48%	48%	48%	48%	47%	15%
grade 1 events	489	529	447	539	534	171
	0%	0%	0%	0%	0%	0%
grade 2 events	32604	32734	31738	31737	35006	131385
	15%	15%	15%	15%	15%	26%
grade 3 events	11508	11590	11107	11436	12159	31301
	5%	5%	5%	5%	5%	6%
grade 4 events	11537	11550	11166	11253	12490	30809
	5%	5%	5%	5%	5%	6%
grade 5 events	1845	1749	1715	1854	2153	8480
	0%	0%	0%	0%	0%	1%
grade 6 events	26896	26927	25861	25207	32350	159240
	12%	12%	12%	12%	13%	32%
grade 7 events	23815	24208	24685	24782	27649	54880
	11%	11%	12%	11%	11%	11%

2.2 Compared Parameters

Parameter	Planned	Actual	Parameter	Planned	Actual
Instrument	ACIS	ACIS	Obspar format version number	6	6
Detector	ACIS-012367	ACIS-012367	Obspar file type	PREDICTED	ACTUAL
Grating	NONE	NONE	Obspar update status	NONE	UPDATED
Data mode	FAINT	FAINT	On-chip summing requested	N	N
Observation mode	SECONDARY	SECONDARY	Subarray requested	NONE	NONE
Pointing RA	0	179.0044583616622	Alternating exposures requested	N	N
Pointing Dec	0	0.9717176058232764	Primary exposure time	0.000000	3.2
Pointing Roll	0.0	246.1025136388602			
SIM focus pos (mm)	-0.782348	-0.7809083437167272			
SIM defocus (mm)	0	0.7524282956875696			
SIM translation stage pos (mm)	-233.592463	250.466033080201			
SIM translation stage offset (mm)	0	-0.01005468664627074			
Observation start time	136875423.28	136875422.25495			
Observation start date	2002-05-04T04:57:03	2002-05-04T04:57:02			
Observation end time	136896733.031	136896732.00581			
Observation end date	2002-05-04T10:52:13	2002-05-04T10:52:12			
Read mode	TIMED	TIMED			

2.3 Aspect

2.4 Star Slots

2.5 FID Slots

A Summary

A.1 Status

V&V Scientist	Doug Morgan
V&V Date (YYYY-MM-DD)	2006.09.15
V&V Edition	1
V&V Disposition and Status	OK
V&V Charge Time	8.45928843

A.2 Comments