

# V&V Reference Report

## L2 ASCDS Version : 8.4.5

Observation 61213 - L2 Version 3  
Chandra X-Ray Center

L2 Processing Date : Oct 7 2012

## Contents

<b>1</b>	<b>Front</b>	<b>2</b>
<b>2</b>	<b>OBI</b>	<b>3</b>
2.1	OBI . . . . .	3
2.1.1	Images . . . . .	3
2.1.2	Bias . . . . .	3
2.1.3	Parameters . . . . .	4
2.1.4	Events . . . . .	4
2.2	Compared Parameters . . . . .	5
2.3	Star Slots . . . . .	6
2.4	FID Slots . . . . .	6
<b>A</b>	<b>Summary</b>	<b>7</b>
A.1	Status . . . . .	7
A.2	Comments . . . . .	7

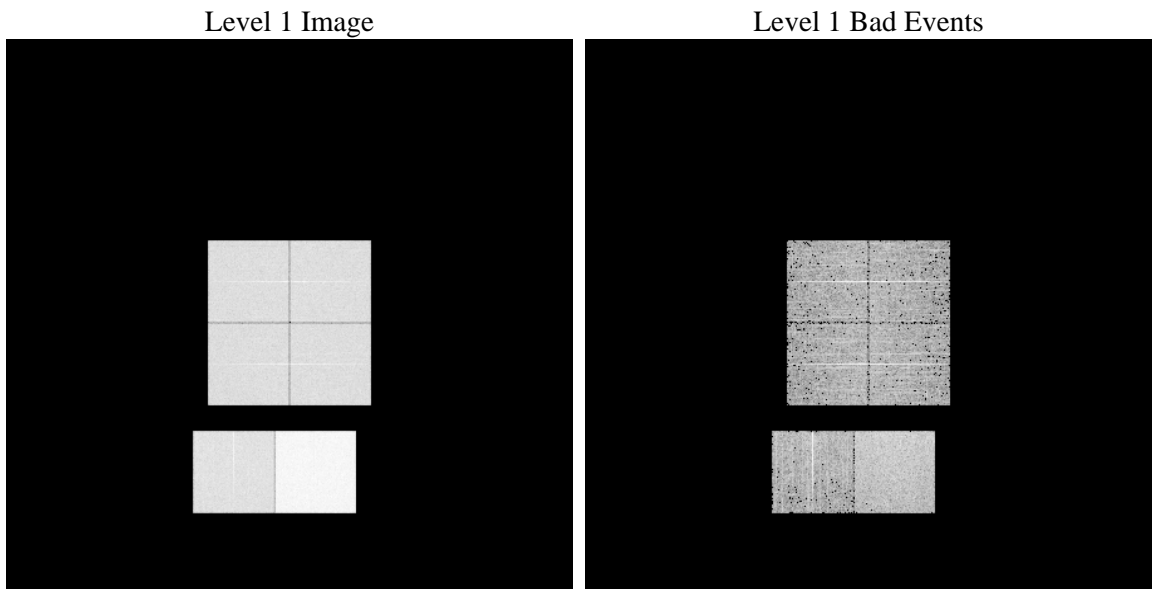
# 1 Front

seq_num	&#160	Sequence number
obs_id	61213	Observation id
title	ACIS-012367 diagnostics	Proposal title
observer	CHANDRA engineering request/realtime commanding	Principal investig
object	&#160	Source name
dtcycle	0	&#160
cycle	P	events from which exps? Prim/Second/Both
ra_targ	0.0	Observer's specified target RA [deg]
dec_targ	0.0	Observer's specified target Dec [deg]
ra_nom	281.98085425201	Nominal RA [deg]
dec_nom	-21.977451254082	Nominal Dec [deg]
roll_nom	95.46537808561	Nominal Roll [deg]
revision	3	Processing version of data
ontime	7791.9999709725	Sum of GTIs [s]
livetime	7693.332975561	Livetime [s]
ontime0	3310.7036779821	Sum of GTIs [s]
ontime1	3359.3590220511	Sum of GTIs [s]
ontime2	3194.1088463366	Sum of GTIs [s]
ontime3	3232.8370765448	Sum of GTIs [s]
ontime6	3563.6262527108	Sum of GTIs [s]
ontime7	7791.9999709725	Sum of GTIs [s]
l2events	1220256	Number of level 2 events

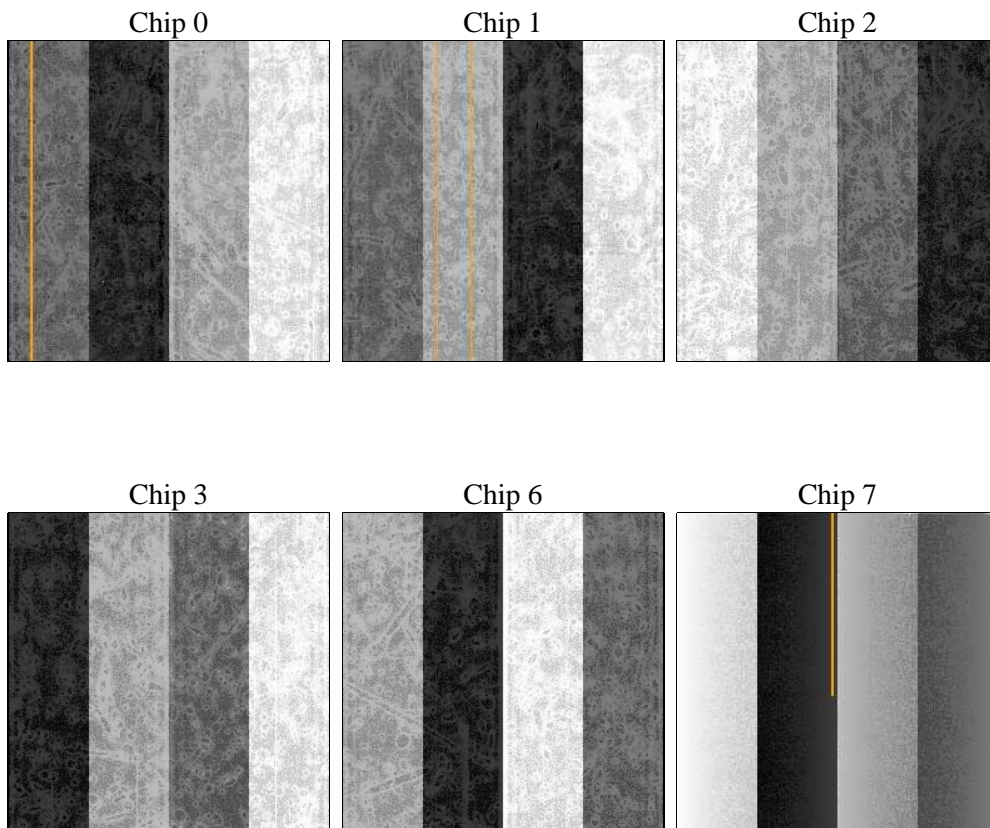
## 2 OBI

### 2.1 OBI

#### 2.1.1 Images



#### 2.1.2 Bias



### 2.1.3 Parameters

obi_num	0	Obi number	sched_exp_time	0.0	[s] Scheduled observation exposure time
ascdsver	8.4.5	Processing system revision	ontime	7791.9999709725	Sum of GTIs [s]
caldsver	4.5.2	&#160	ontime0	3310.7036779821	Sum of GTIs [s]
date	2012-10-07T13:02:50	Date and time of file creation	ontime1	3359.3590220511	Sum of GTIs [s]
revision	3	Processing version of data	ontime2	3194.1088463366	Sum of GTIs [s]
			ontime3	3232.8370765448	Sum of GTIs [s]
			ontime6	3563.6262527108	Sum of GTIs [s]
			ontime7	7791.9999709725	Sum of GTIs [s]
			l1events	1439889	Number of level 1 events

### 2.1.4 Events

	ccd 0	ccd 1	ccd 2	ccd 3	ccd 6	ccd 7		ccd 0	ccd 1	ccd 2	ccd 3	ccd 6	ccd 7
level 1 events	191612	193937	188849	191207	217854	456430	grade 0 events	91917	93647	91154	93006	103714	104823
rejected events	24351	23527	24532	25213	27179	43009		47%	48%	48%	48%	47%	22%
rejected %	12%	12%	12%	13%	12%	9%	grade 1 events	462	475	463	478	475	276
								0%	0%	0%	0%	0%	0%
							grade 2 events	29909	30006	29060	29066	33032	91402
								15%	15%	15%	15%	15%	20%
							grade 3 events	10448	10884	10285	10419	12027	42257
								5%	5%	5%	5%	5%	9%
							grade 4 events	10611	10873	10528	10616	11863	41622
								5%	5%	5%	5%	5%	9%
							grade 5 events	1654	1664	1561	1672	2014	8606
								0%	0%	0%	0%	0%	1%
							grade 6 events	24541	25000	23290	23067	30039	133505
								12%	12%	12%	12%	13%	29%
							grade 7 events	22070	21388	22508	22883	24690	33939
								11%	11%	11%	11%	11%	7%

## 2.2 Compared Parameters

Parameter	Planned	Actual	Parameter	Planned	Actual
Instrument	ACIS	ACIS	Obspar format version number	7	7
Detector	ACIS-012367	ACIS-012367	Obspar file type	PREDICTED	ACTUAL
Grating	NONE	NONE	Obspar update status	NONE	UPDATED
Data mode	FAINT	FAINT	On-chip summing requested	N	N
Observation mode	SECONDARY	SECONDARY	Subarray requested	NONE	NONE
[deg] Pointing RA	0	281.9808542520101	Alternating exposures requested	N	N
[deg] Pointing Dec	0	-21.97745125408192	[s] Primary exposure time	3.2	3.2
[deg] Pointing Roll	0.0	95.46537808561028			
[mm] SIM focus pos	-0.782348	-0.6828225247311905			
[mm] SIM defocus	0	0.8505141146731063			
[mm] SIM translation stage pos	-233.592463	250.466033080201			
[mm] SIM translation stage offset	0	-0.01005468664627074			
[s] Observation start time (MET)	137066528.387486	137066527.36273			
Observation start date	2002-05-06T10:02:08	2002-05-06T10:02:07			
[s] Observation end time (MET)	137076399.13789	137076398.11314			
Observation end date	2002-05-06T12:46:39	2002-05-06T12:46:38			
Read mode	TIMED	TIMED			

## **2.3 Star Slots**

## **2.4 FID Slots**

## A Summary

### A.1 Status

V&V Scientist	Beth Sundheim
V&V Date (YYYY-MM-DD)	2012.10.17
V&V Edition	1
V&V Disposition and Status	OK
V&V Charge Time	7.7919999709725

### A.2 Comments