

# V&V Reference Report

## L2 ASCDS Version : 8.4.5

Observation 61206 - L2 Version 3  
Chandra X-Ray Center

L2 Processing Date : Oct 7 2012

## Contents

<b>1</b>	<b>Front</b>	<b>2</b>
<b>2</b>	<b>OBI</b>	<b>3</b>
2.1	OBI . . . . .	3
2.1.1	Images . . . . .	3
2.1.2	Bias . . . . .	3
2.1.3	Parameters . . . . .	4
2.1.4	Events . . . . .	4
2.2	Compared Parameters . . . . .	5
2.3	Star Slots . . . . .	6
2.4	FID Slots . . . . .	6
<b>A</b>	<b>Summary</b>	<b>7</b>
A.1	Status . . . . .	7
A.2	Comments . . . . .	7

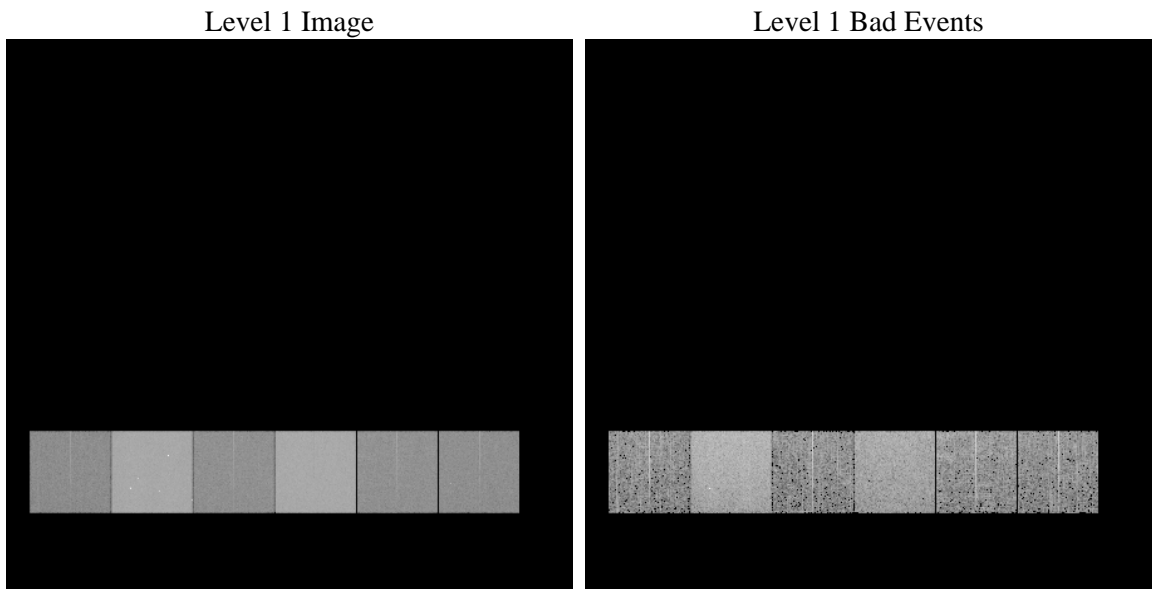
# 1 Front

seq_num	&#160	Sequence number
obs_id	61206	Observation id
title	ACIS-456789 diagnostics	Proposal title
observer	CHANDRA engineering request/realtime commanding	Principal investig
object	&#160	Source name
dtcycle	0	&#160
cycle	P	events from which exps? Prim/Second/Both
ra_targ	0.0	Observer's specified target RA [deg]
dec_targ	0.0	Observer's specified target Dec [deg]
ra_nom	244.97244135844	Nominal RA [deg]
dec_nom	-4.991946404455	Nominal Dec [deg]
roll_nom	130.86282525335	Nominal Roll [deg]
revision	3	Processing version of data
ontime	7526.7782225013	Sum of GTIs [s]
livetime	7431.4696245662	Livetime [s]
ontime4	2764.6043125689	Sum of GTIs [s]
ontime5	8067.9777084291	Sum of GTIs [s]
ontime6	3040.0922735035	Sum of GTIs [s]
ontime7	7526.7782225013	Sum of GTIs [s]
ontime8	3049.8152539432	Sum of GTIs [s]
ontime9	2957.0285491049	Sum of GTIs [s]
l2events	1319515	Number of level 2 events

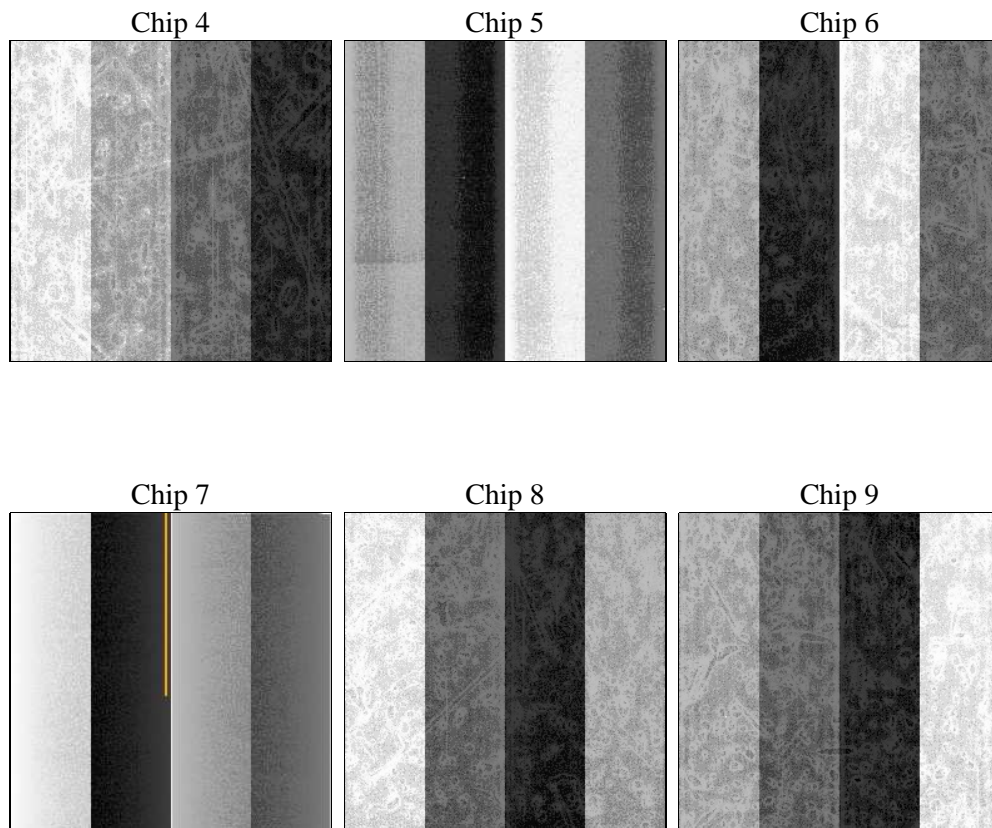
## 2 OBI

### 2.1 OBI

#### 2.1.1 Images



#### 2.1.2 Bias



### 2.1.3 Parameters

obi_num	0	Obi number	sched_exp_time	0.0	[s] Scheduled observation exposure time
ascdsver	8.4.5	Processing system revision	ontime	7526.7782225013	Sum of GTIs [s]
caldsver	4.5.2	&#160	ontime4	2764.6043125689	Sum of GTIs [s]
date	2012-10-07T15:58:26	Date and time of file creation	ontime5	8067.9777084291	Sum of GTIs [s]
revision	3	Processing version of data	ontime6	3040.0922735035	Sum of GTIs [s]
			ontime7	7526.7782225013	Sum of GTIs [s]
			ontime8	3049.8152539432	Sum of GTIs [s]
			ontime9	2957.0285491049	Sum of GTIs [s]
			l1events	1567353	Number of level 1 events

### 2.1.4 Events

	ccd 4	ccd 5	ccd 6	ccd 7	ccd 8	ccd 9		ccd 4	ccd 5	ccd 6	ccd 7	ccd 8	ccd 9
level 1 events	157684	429184	183123	436841	187962	172559	grade 0 events	76582	89098	88158	100789	89751	82970
rejected events	22272	55970	22005	40419	25613	22004		48%	20%	48%	23%	47%	48%
rejected %	14%	13%	12%	9%	13%	12%	grade 1 events	408	306	409	268	406	421
								0%	0%	0%	0%	0%	0%
							grade 2 events	23942	135556	28027	87993	28621	26424
								15%	31%	15%	20%	15%	15%
							grade 3 events	8371	23018	9995	40057	10402	9450
								5%	5%	5%	9%	5%	5%
							grade 4 events	8335	22903	9839	39806	10375	9279
								5%	5%	5%	9%	5%	5%
							grade 5 events	1324	10160	1613	7964	1827	1568
								0%	2%	0%	1%	0%	0%
							grade 6 events	18340	103411	25487	128659	23873	22758
								11%	24%	13%	29%	12%	13%
							grade 7 events	20382	44732	19595	31305	22707	19689
								12%	10%	10%	7%	12%	11%

## 2.2 Compared Parameters

Parameter	Planned	Actual
Instrument	ACIS	ACIS
Detector	ACIS-456789	ACIS-456789
Grating	NONE	NONE
Data mode	FAINT	FAINT
Observation mode	SECONDARY	SECONDARY
[deg] Pointing RA	0	244.9724413584365
[deg] Pointing Dec	0	-4.991946404455006
[deg] Pointing Roll	0.0	130.8628252533508
[mm] SIM focus pos	-0.684267	-0.6828225247311905
[mm] SIM defocus	0	0.8505141146731063
[mm] SIM translation stage pos	-190.132523	250.4635187648994
[mm] SIM translation stage offset	0	-0.007540371344731511
[s] Observation start time (MET)	137558755.957503	137558754.9328
Observation start date	2002-05-12T02:45:56	2002-05-12T02:45:54
[s] Observation end time (MET)	137581402.308426	137581401.28372
Observation end date	2002-05-12T09:03:22	2002-05-12T09:03:21
Read mode	TIMED	TIMED

Parameter	Planned	Actual
Obspar format version number	7	7
Obspar file type	PREDICTED	ACTUAL
Obspar update status	NONE	UPDATED
On-chip summing requested	N	N
Subarray requested	NONE	NONE
Alternating exposures requested	N	N
[s] Primary exposure time	3.2	3.2

## 2.3 Star Slots

## 2.4 FID Slots

## A Summary

### A.1 Status

V&V Scientist	Beth Sundheim
V&V Date (YYYY-MM-DD)	2012.10.17
V&V Edition	1
V&V Disposition and Status	OK
V&V Charge Time	7.5267782225013

### A.2 Comments