

# V&V Reference Report

## L2 ASCDS Version : 7.6.9

Observation 61188 - L2 Version 001  
Chandra X-Ray Center

L2 Processing Date : Sep 16 2006

## Contents

<b>1</b>	<b>Front</b>	<b>2</b>
<b>2</b>	<b>OBI</b>	<b>3</b>
2.1	OBI . . . . .	3
2.1.1	Images . . . . .	3
2.1.2	Bias . . . . .	3
2.1.3	Parameters . . . . .	4
2.1.4	Events . . . . .	4
2.2	Compared Parameters . . . . .	5
2.3	Aspect . . . . .	6
2.4	Star Slots . . . . .	8
2.5	FID Slots . . . . .	8
<b>A</b>	<b>Summary</b>	<b>9</b>
A.1	Status . . . . .	9
A.2	Comments . . . . .	9

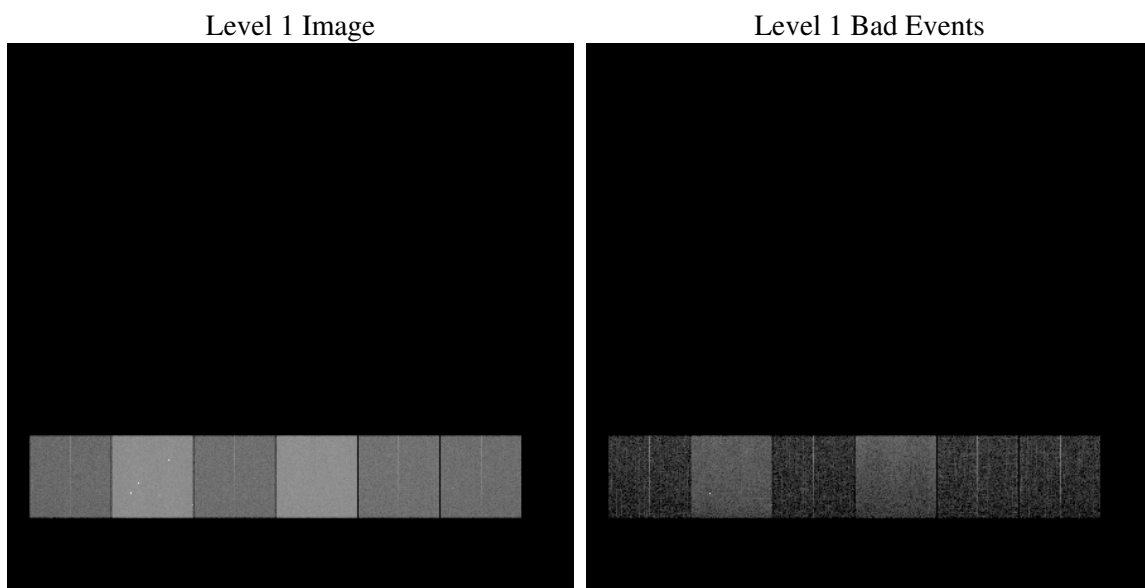
# 1 Front

seq_num	&#160
obs_id	61188
title	ACIS-456789 diagnostics
observer	CHANDRA engineering request/realtime commanding
object	&#160
dtcycle	0
cycle	P
ra_targ	0.0
dec_targ	0.0
ra_nom	271.97814874975
dec_nom	-13.980775084132
roll_nom	104.96929552127
revision	2
ontime	7573.3973985314
livetime	7477.4984805188
ontime4	2789.8212509155
ontime5	8084.8071463108
ontime6	3039.3393933773
ontime7	7573.3973985314
ontime8	3190.9230196178
ontime9	3000.324261874
l2events	1302362

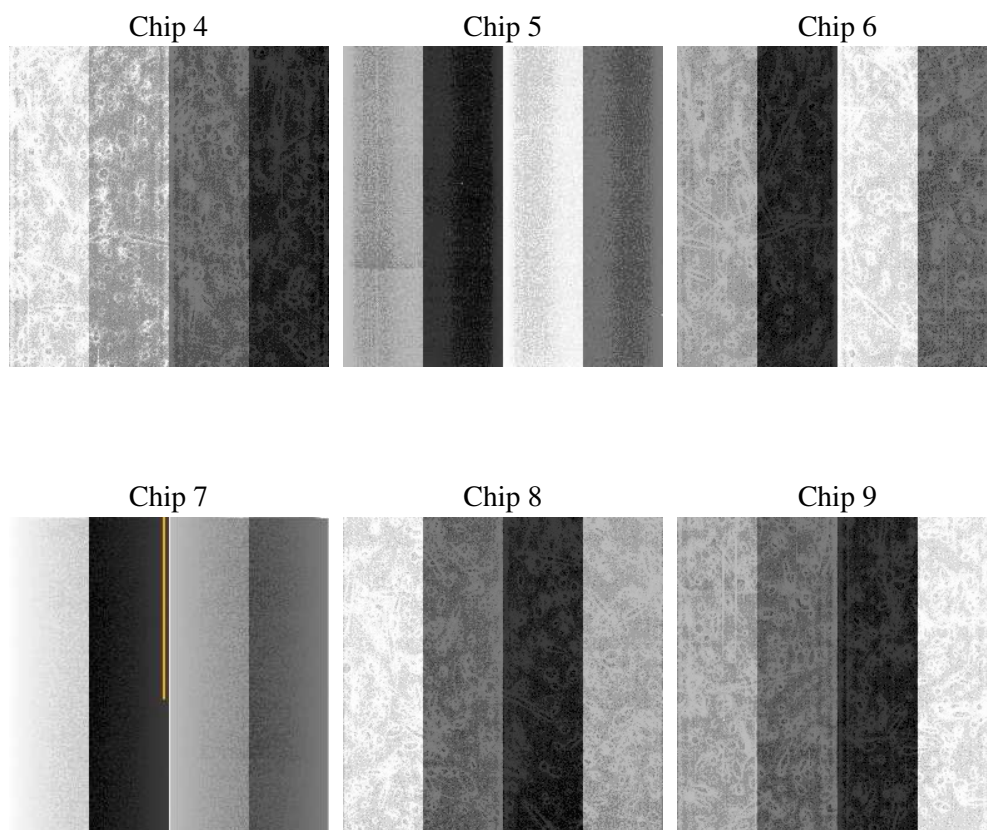
## 2 OBI

### 2.1 OBI

#### 2.1.1 Images



#### 2.1.2 Bias



### 2.1.3 Parameters

obi_num	0
ascdsver	7.6.9
caldsver	3.2.3
date	2006-09-16T21:17:13
revision	2

sched_exp_time	0.0
ontime	7574.2319700718
ontime4	2790.532702446
ontime5	8086.3043932021
ontime6	3040.0918849111
ontime7	7574.2319700718
ontime8	3192.4202665091
ontime9	3001.1998734176
l1events	1567837

### 2.1.4 Events

	ccd 4	ccd 5	ccd 6	ccd 7	ccd 8	ccd 9
level 1 events	157763	427934	181504	434662	192603	173371
rejected events	21845	65296	20879	51884	23324	21602
rejected %	13%	15%	11%	11%	12%	12%

	ccd 4	ccd 5	ccd 6	ccd 7	ccd 8	ccd 9
grade 0 events	76907	46445	87658	71361	93119	83378
	48%	10%	48%	16%	48%	48%
grade 1 events	412	152	443	143	437	404
	0%	0%	0%	0%	0%	0%
grade 2 events	23984	172560	27654	114612	29886	26975
	15%	40%	15%	26%	15%	15%
grade 3 events	8312	12080	9814	29168	10671	9156
	5%	2%	5%	6%	5%	5%
grade 4 events	8381	11800	10132	28337	10733	9345
	5%	2%	5%	6%	5%	5%
grade 5 events	1378	7981	1661	7182	1831	1632
	0%	1%	0%	1%	0%	0%
grade 6 events	18334	119753	25367	139300	24870	22915
	11%	27%	13%	32%	12%	13%
grade 7 events	20055	57163	18775	44559	21056	19566
	12%	13%	10%	10%	10%	11%

## 2.2 Compared Parameters

Parameter	Planned	Actual	Parameter	Planned	Actual
Instrument	ACIS	ACIS	Obspar format version number	6	6
Detector	ACIS-456789	ACIS-456789	Obspar file type	PREDICTED	ACTUAL
Grating	NONE	NONE	Obspar update status	NONE	UPDATED
Data mode	FAINT	FAINT	On-chip summing requested	N	N
Observation mode	SECONDARY	SECONDARY	Subarray requested	NONE	NONE
Pointing RA	0	271.978148749747	Alternating exposures requested	N	N
Pointing Dec	0	-13.98077508413182	Primary exposure time	0.000000	3.2
Pointing Roll	0.0	104.9692955212677			
SIM focus pos (mm)	-0.684267	-0.6828225247311905			
SIM defocus (mm)	0	0.8505141146731063			
SIM translation stage pos (mm)	-190.132523	250.466033080201			
SIM translation stage offset (mm)	0	-0.01005468664627074			
Observation start time	138244948.385	138244947.36079			
Observation start date	2002-05-20T01:22:28	2002-05-20T01:22:27			
Observation end time	138266258.136	138266257.11166			
Observation end date	2002-05-20T07:17:38	2002-05-20T07:17:37			
Read mode	TIMED	TIMED			

## 2.3 Aspect



## **2.4 Star Slots**

## **2.5 FID Slots**



## A Summary

### A.1 Status

V&V Scientist	Doug Morgan
V&V Date (YYYY-MM-DD)	2006.09.17
V&V Edition	1
V&V Disposition and Status	OK
V&V Charge Time	7.57339739

### A.2 Comments