

V&V Reference Report

L2 ASCDS Version : 7.6.9

Observation 61181 - L2 Version 001
Chandra X-Ray Center

L2 Processing Date : Sep 17 2006

Contents

1	Front	2
2	OBI	3
2.1	OBI	3
2.1.1	Images	3
2.1.2	Bias	3
2.1.3	Parameters	4
2.1.4	Events	4
2.2	Compared Parameters	5
2.3	Aspect	6
2.4	Star Slots	8
2.5	FID Slots	8
A	Summary	9
A.1	Status	9
A.2	Comments	9

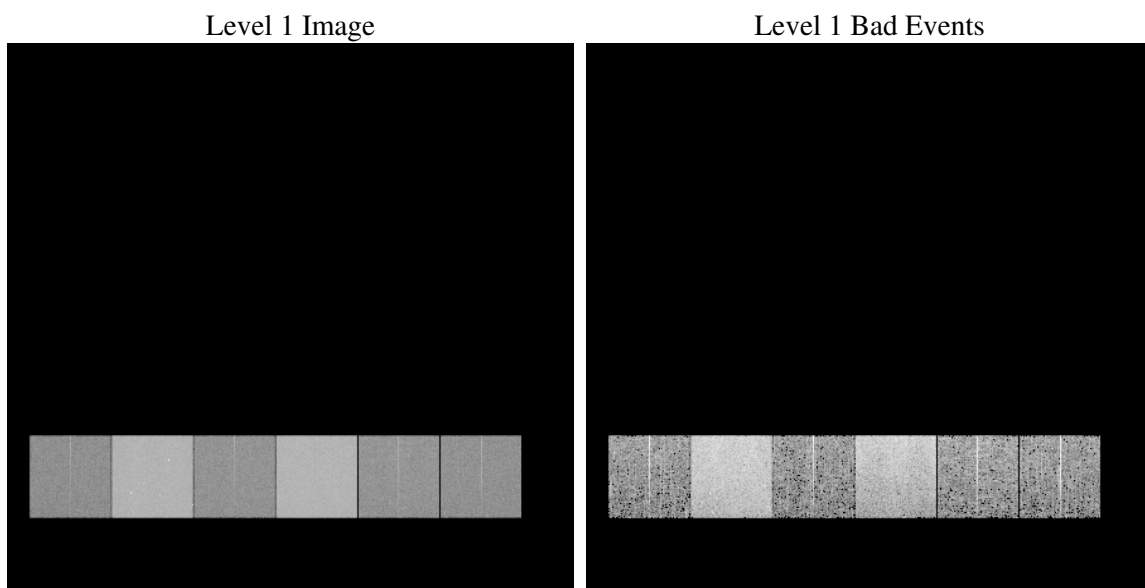
1 Front

seq_num	
obs_id	61181
title	ACIS-456789 diagnostics
observer	CHANDRA engineering request/realtime commanding
object	
dtcycle	0
cycle	P
ra_targ	0.0
dec_targ	0.0
ra_nom	289.98254602455
dec_nom	-29.975712467225
roll_nom	89.109120616555
revision	2
ontime	7637.5953189433
livetime	7540.883488207
ontime4	2864.9413771629
ontime5	8227.4506684542
ontime6	3065.8439697921
ontime7	7637.5953189433
ontime8	3106.6975697279
ontime9	2977.0567972958
l2events	1301538

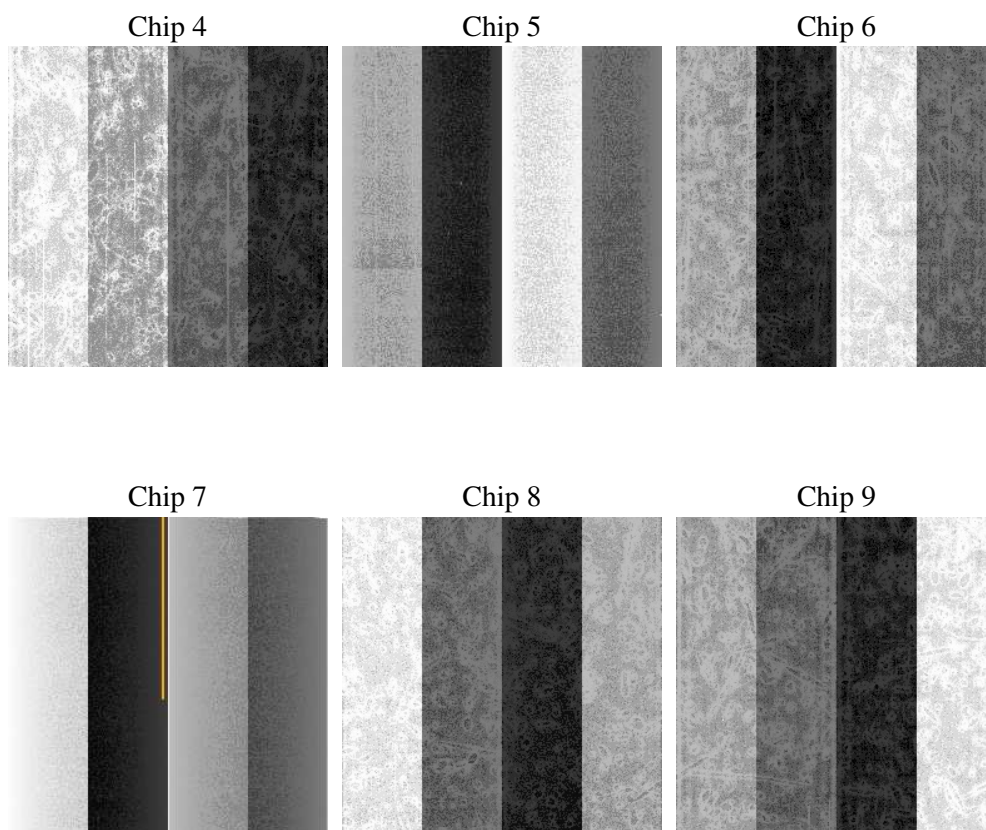
2 OBI

2.1 OBI

2.1.1 Images



2.1.2 Bias



2.1.3 Parameters

obi_num	0
ascdsver	7.6.9
caldbver	3.2.3
date	2006-09-17T23:04:21
revision	2

sched_exp_time	0.0
ontime	7639.0510255098
ontime4	2865.0765623152
ontime5	8228.9063750207
ontime6	3066.0201949477
ontime7	7639.0510255098
ontime8	3108.1532762945
ontime9	2978.5125038624
l1events	1566608

2.1.4 Events

	ccd 4	ccd 5	ccd 6	ccd 7	ccd 8	ccd 9
level 1 events	160964	428439	181401	436268	187761	171775
rejected events	21483	65891	20844	53226	24064	22042
rejected %	13%	15%	11%	12%	12%	12%

	ccd 4	ccd 5	ccd 6	ccd 7	ccd 8	ccd 9
grade 0 events	78578	43187	87649	69836	89586	82405
	48%	10%	48%	16%	47%	47%
grade 1 events	404	150	423	159	424	387
	0%	0%	0%	0%	0%	0%
grade 2 events	24769	174367	27657	115965	29259	26341
	15%	40%	15%	26%	15%	15%
grade 3 events	8513	12218	9779	28517	10275	9053
	5%	2%	5%	6%	5%	5%
grade 4 events	8734	11879	9800	27872	10294	9509
	5%	2%	5%	6%	5%	5%
grade 5 events	1471	7403	1708	7138	1749	1620
	0%	1%	0%	1%	0%	0%
grade 6 events	18887	120897	25672	140852	24283	22425
	11%	28%	14%	32%	12%	13%
grade 7 events	19608	58338	18713	45929	21891	20035
	12%	13%	10%	10%	11%	11%

2.2 Compared Parameters

Parameter	Planned	Actual	Parameter	Planned	Actual
Instrument	ACIS	ACIS	Obspar format version number	6	6
Detector	ACIS-456789	ACIS-456789	Obspar file type	PREDICTED	ACTUAL
Grating	NONE	NONE	Obspar update status	NONE	UPDATED
Data mode	FAINT	FAINT	On-chip summing requested	N	N
Observation mode	SECONDARY	SECONDARY	Subarray requested	NONE	NONE
Pointing RA	0	289.98254602455	Alternating exposures requested	N	N
Pointing Dec	0	-29.97571246722507	Primary exposure time	0.000000	3.2
Pointing Roll	0.0	89.10912061655456			
SIM focus pos (mm)	-0.684267	-0.7809083437167272			
SIM defocus (mm)	0	0.7524282956875696			
SIM translation stage pos (mm)	-190.132523	250.466033080201			
SIM translation stage offset (mm)	0	-0.01005468664627074			
Observation start time	138929705.813	138929704.78873			
Observation start date	2002-05-27T23:35:06	2002-05-27T23:35:04			
Observation end time	138951015.564	138951014.5396			
Observation end date	2002-05-28T05:30:16	2002-05-28T05:30:14			
Read mode	TIMED	TIMED			

2.3 Aspect

2.4 Star Slots

2.5 FID Slots

A Summary

A.1 Status

V&V Scientist	Jen Lauer
V&V Date (YYYY-MM-DD)	2006.09.18
V&V Edition	1
V&V Disposition and Status	OK
V&V Charge Time	7.63759531

A.2 Comments