

V&V Reference Report

L2 ASCDS Version : 8.4.5

Observation 61173 - L2 Version 3
Chandra X-Ray Center

L2 Processing Date : Oct 9 2012

Contents

1	Front	2
2	OBI	3
2.1	OBI	3
2.1.1	Images	3
2.1.2	Bias	3
2.1.3	Parameters	4
2.1.4	Events	4
2.2	Compared Parameters	5
2.3	Star Slots	6
2.4	FID Slots	6
A	Summary	7
A.1	Status	7
A.2	Comments	7

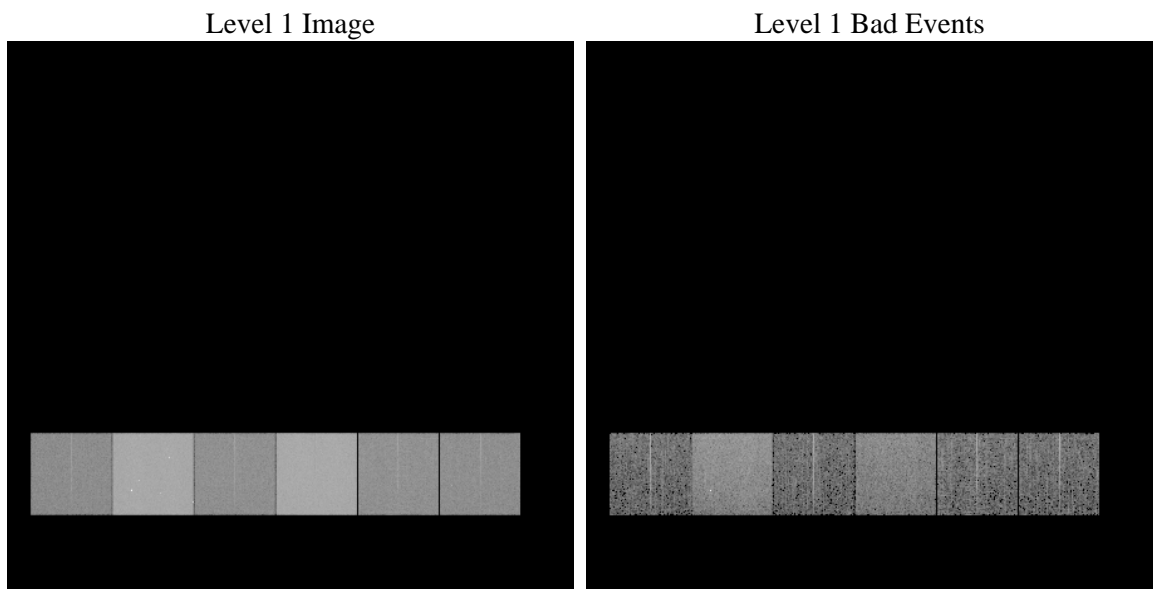
1 Front

seq_num	 	Sequence number
obs_id	61173	Observation id
title	ACIS-456789 diagnostics	Proposal title
observer	CHANDRA engineering request/realtime commanding	Principal investig
object	 	Source name
dtcycle	0	
cycle	P	events from which exps? Prim/Second/Both
ra_targ	0.0	Observer's specified target RA [deg]
dec_targ	0.0	Observer's specified target Dec [deg]
ra_nom	135.00370365832	Nominal RA [deg]
dec_nom	-1.0283873503978	Nominal Dec [deg]
roll_nom	244.57391644695	Nominal Roll [deg]
revision	3	Processing version of data
ontime	7624.6334577799	Sum of GTIs [s]
livetime	7528.0857579344	Livetime [s]
ontime4	2799.8700396419	Sum of GTIs [s]
ontime5	8208.0055964589	Sum of GTIs [s]
ontime6	3042.906390816	Sum of GTIs [s]
ontime7	7624.6334577799	Sum of GTIs [s]
ontime8	3094.8448317647	Sum of GTIs [s]
ontime9	2955.2754304111	Sum of GTIs [s]
l2events	1316640	Number of level 2 events

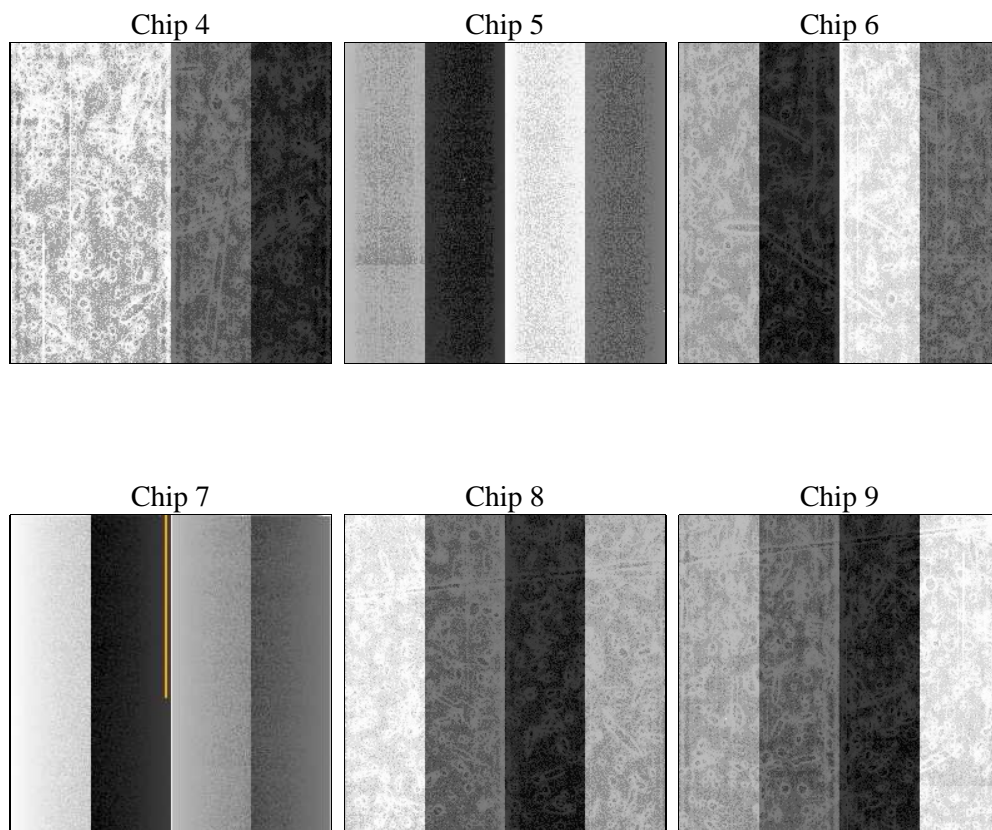
2 OBI

2.1 OBI

2.1.1 Images



2.1.2 Bias



2.1.3 Parameters

obi_num	1	Obi number	sched_exp_time	0.0	[s] Scheduled observation exposure time
ascdsver	8.4.5	Processing system revision	ontime	7624.6334577799	Sum of GTIs [s]
caldsver	4.5.2	 	ontime4	2799.8700396419	Sum of GTIs [s]
date	2012-10-09T03:25:59	Date and time of file creation	ontime5	8208.0055964589	Sum of GTIs [s]
revision	3	Processing version of data	ontime6	3042.906390816	Sum of GTIs [s]
			ontime7	7624.6334577799	Sum of GTIs [s]
			ontime8	3094.8448317647	Sum of GTIs [s]
			ontime9	2955.2754304111	Sum of GTIs [s]
			l1events	1565511	Number of level 1 events

2.1.4 Events

	ccd 4	ccd 5	ccd 6	ccd 7	ccd 8	ccd 9		ccd 4	ccd 5	ccd 6	ccd 7	ccd 8	ccd 9
level 1 events	157400	432193	180027	438336	187576	169979	grade 0 events	76245	89022	86307	100211	88854	81145
rejected events	22324	57855	21949	41306	25227	21853		48%	20%	47%	22%	47%	47%
rejected %	14%	13%	12%	9%	13%	12%	grade 1 events	387	313	456	289	466	408
								0%	0%	0%	0%	0%	0%
							grade 2 events	23796	134444	27247	87832	28790	26115
								15%	31%	15%	20%	15%	15%
							grade 3 events	8296	23719	9737	39955	10270	9226
								5%	5%	5%	9%	5%	5%
							grade 4 events	8237	23337	9786	40214	10298	9182
								5%	5%	5%	9%	5%	5%
							grade 5 events	1364	10841	1660	8367	1792	1698
								0%	2%	0%	1%	0%	0%
							grade 6 events	18502	103816	25001	128818	24137	22458
								11%	24%	13%	29%	12%	13%
							grade 7 events	20573	46701	19833	32650	22969	19747
								13%	10%	11%	7%	12%	11%

2.2 Compared Parameters

Parameter	Planned	Actual	Parameter	Planned	Actual
Instrument	ACIS	ACIS	Obspar format version number	7	7
Detector	ACIS-456789	ACIS-456789	Obspar file type	PREDICTED	ACTUAL
Grating	NONE	NONE	Obspar update status	NONE	UPDATED
Data mode	FAINT	FAINT	On-chip summing requested	N	N
Observation mode	SECONDARY	SECONDARY	Subarray requested	NONE	NONE
[deg] Pointing RA	0	135.0037036583176	Alternating exposures requested	N	N
[deg] Pointing Dec	0	-1.028387350397796	[s] Primary exposure time	3.2	3.2
[deg] Pointing Roll	0.0	244.5739164469525			
[mm] SIM focus pos	-0.684267	-0.6828225247311905			
[mm] SIM defocus	0	0.8505141146731063			
[mm] SIM translation stage pos	-190.132523	250.466033080201			
[mm] SIM translation stage offset	0	-0.01005468664627074			
[s] Observation start time (MET)	139613671.941364	139613670.91665			
Observation start date	2002-06-04T21:34:32	2002-06-04T21:34:30			
[s] Observation end time (MET)	139636006.692276	139636005.66757			
Observation end date	2002-06-05T03:46:47	2002-06-05T03:46:45			
Read mode	TIMED	TIMED			

2.3 Star Slots

2.4 FID Slots

A Summary

A.1 Status

V&V Scientist	Beth Sundheim
V&V Date (YYYY-MM-DD)	2012.10.18
V&V Edition	1
V&V Disposition and Status	OK
V&V Charge Time	7.6246334577799

A.2 Comments