

V&V Reference Report

L2 ASCDS Version : 7.6.9

Observation 61159 - L2 Version 001
Chandra X-Ray Center

L2 Processing Date : Sep 19 2006

Contents

1	Front	2
2	OBI	3
2.1	OBI	3
2.1.1	Images	3
2.1.2	Bias	3
2.1.3	Parameters	4
2.1.4	Events	4
2.2	Compared Parameters	5
2.3	Aspect	6
2.4	Star Slots	8
2.5	FID Slots	8
A	Summary	9
A.1	Status	9
A.2	Comments	9

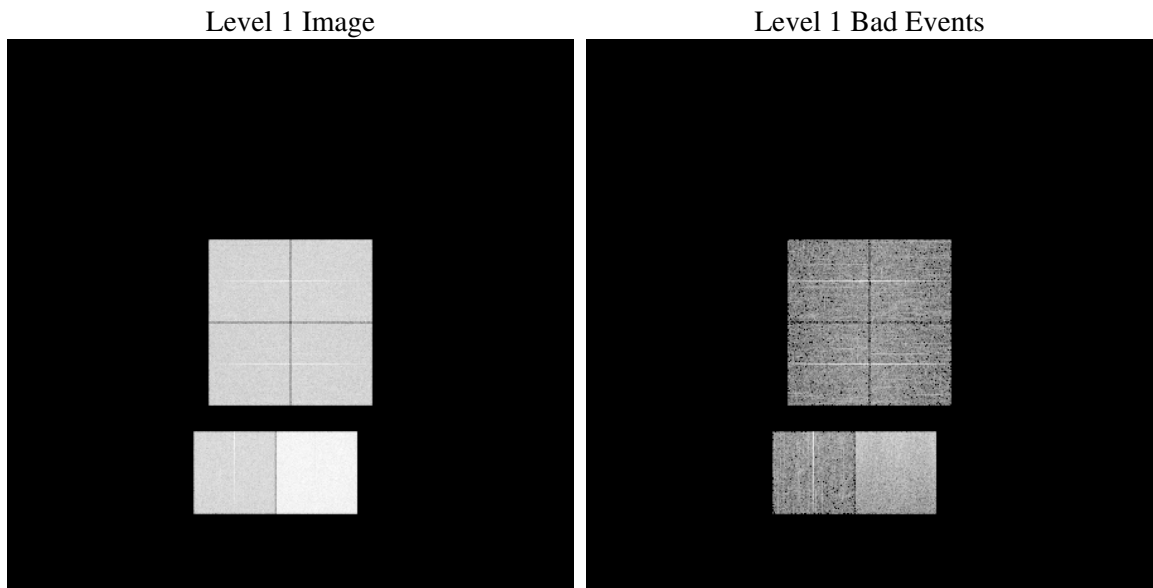
1 Front

seq_num	
obs_id	61159
title	ACIS-012367 diagnostics
observer	CHANDRA engineering request/realtime commanding
object	
dtcycle	0
cycle	P
ra_targ	0.0
dec_targ	0.0
ra_nom	289.98819658066
dec_nom	-29.973253441233
roll_nom	78.154722721244
revision	2
ontime	8460.7999684811
livetime	8353.664224798
ontime0	3772.2326804698
ontime1	3879.227283299
ontime2	3603.7820659578
ontime3	3668.4382075071
ontime6	3953.8524158299
ontime7	8460.7999684811
l2events	1305805

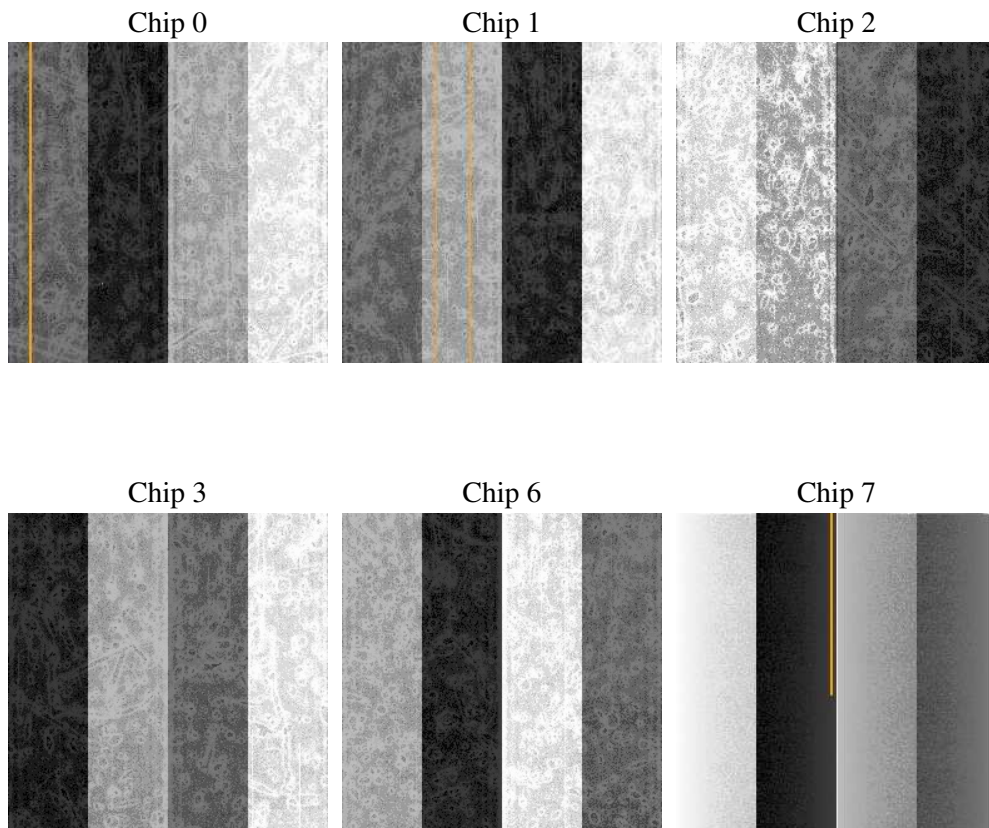
2 OBI

2.1 OBI

2.1.1 Images



2.1.2 Bias



2.1.3 Parameters

obi_num	0
ascdsver	7.6.9
caldbver	3.2.3
date	2006-09-19T21:48:36
revision	2

sched_exp_time	0.0
ontime	8462.254976213
ontime0	3772.5625091493
ontime1	3879.5160719752
ontime2	3604.0298146307
ontime3	3668.8501161933
ontime6	3954.0591245294
ontime7	8462.254976213
l1events	1556627

2.1.4 Events

	ccd 0	ccd 1	ccd 2	ccd 3	ccd 6	ccd 7
level 1 events	209852	217808	204718	208991	233849	481409
rejected events	24682	26345	25830	26318	29507	60722
rejected %	11%	12%	12%	12%	12%	12%

	ccd 0	ccd 1	ccd 2	ccd 3	ccd 6	ccd 7
grade 0 events	101844	105194	99014	101976	111271	76753
	48%	48%	48%	48%	47%	15%
grade 1 events	530	468	518	523	542	204
	0%	0%	0%	0%	0%	0%
grade 2 events	32669	33790	31601	32471	35349	126575
	15%	15%	15%	15%	15%	26%
grade 3 events	11679	12301	11285	11441	12745	31225
	5%	5%	5%	5%	5%	6%
grade 4 events	11534	12036	11372	11407	12639	31127
	5%	5%	5%	5%	5%	6%
grade 5 events	1835	1831	1744	1904	2117	8014
	0%	0%	0%	0%	0%	1%
grade 6 events	27444	28142	25616	25378	32338	155007
	13%	12%	12%	12%	13%	32%
grade 7 events	22317	24046	23568	23891	26848	52504
	10%	11%	11%	11%	11%	10%

2.2 Compared Parameters

Parameter	Planned	Actual	Parameter	Planned	Actual
Instrument	ACIS	ACIS	Obspar format version number	6	6
Detector	ACIS-012367	ACIS-012367	Obspar file type	PREDICTED	ACTUAL
Grating	NONE	NONE	Obspar update status	NONE	UPDATED
Data mode	FAINT	FAINT	On-chip summing requested	N	N
Observation mode	SECONDARY	SECONDARY	Subarray requested	NONE	NONE
Pointing RA	0	289.988196580659	Alternating exposures requested	N	N
Pointing Dec	0	-29.97325344123303	Primary exposure time	3.2	3.2
Pointing Roll	0.0	78.15472272124433			
SIM focus pos (mm)	-0.782348	-0.7809083437167272			
SIM defocus (mm)	0	0.7524282956875696			
SIM translation stage pos (mm)	-233.592463	250.466033080201			
SIM translation stage offset (mm)	0	-0.01005468664627074			
Observation start time	140766680.138542	140766679.11381			
Observation start date	2002-06-18T05:51:20	2002-06-18T05:51:19			
Observation end time	140782301.139167	140782300.11445			
Observation end date	2002-06-18T10:11:41	2002-06-18T10:11:40			
Read mode	TIMED	TIMED			

2.3 Aspect

2.4 Star Slots

2.5 FID Slots

A Summary

A.1 Status

V&V Scientist	Jen Lauer
V&V Date (YYYY-MM-DD)	2006.09.20
V&V Edition	1
V&V Disposition and Status	OK
V&V Charge Time	8.46079996

A.2 Comments