

V&V Reference Report

L2 ASCDS Version : 8.4.5

Observation 61157 - L2 Version 3
Chandra X-Ray Center

L2 Processing Date : Oct 10 2012

Contents

1	Front	2
2	OBI	3
2.1	OBI	3
2.1.1	Images	3
2.1.2	Bias	3
2.1.3	Parameters	4
2.1.4	Events	4
2.2	Compared Parameters	5
2.3	Star Slots	6
2.4	FID Slots	6
A	Summary	7
A.1	Status	7
A.2	Comments	7

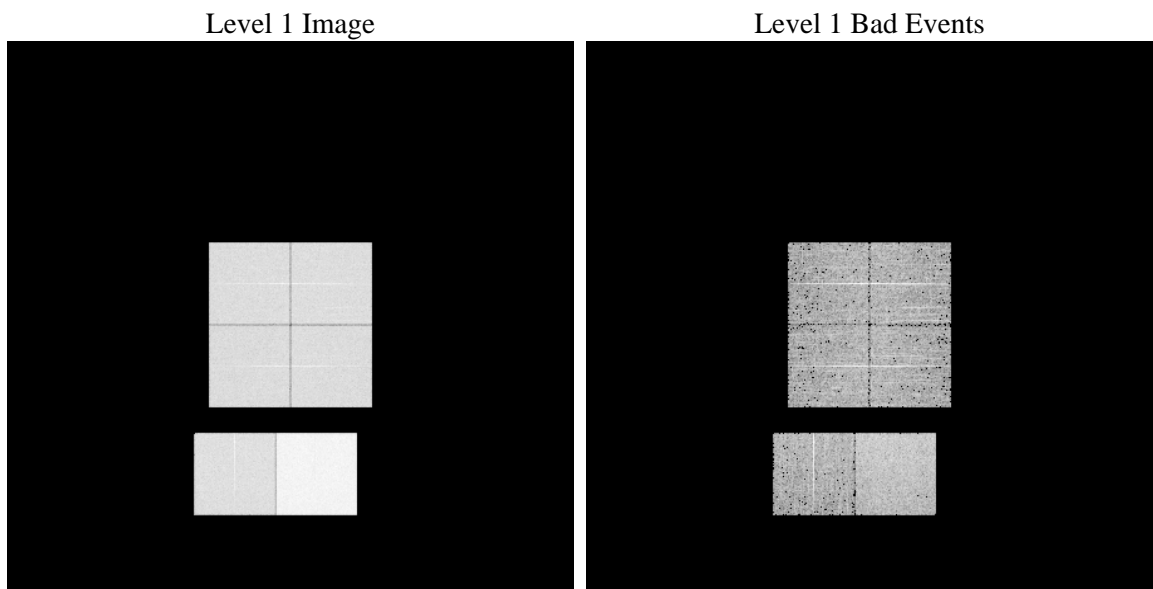
1 Front

seq_num	 	Sequence number
obs_id	61157	Observation id
title	ACIS-012367 diagnostics	Proposal title
observer	CHANDRA engineering request/realtime commanding	Principal investig
object	 	Source name
dtcycle	0	
cycle	P	events from which exps? Prim/Second/Both
ra_targ	0.0	Observer's specified target RA [deg]
dec_targ	0.0	Observer's specified target Dec [deg]
ra_nom	146.99861952635	Nominal RA [deg]
dec_nom	-23.028578452194	Nominal Dec [deg]
roll_nom	234.65501222192	Nominal Roll [deg]
revision	3	Processing version of data
ontime	7795.1999709606	Sum of GTIs [s]
livetime	7696.4924552224	Livetime [s]
ontime0	3499.1524043679	Sum of GTIs [s]
ontime1	3551.0496559739	Sum of GTIs [s]
ontime2	3304.7737690806	Sum of GTIs [s]
ontime3	3385.633725673	Sum of GTIs [s]
ontime6	3669.4451759458	Sum of GTIs [s]
ontime7	7795.1999709606	Sum of GTIs [s]
l2events	1218320	Number of level 2 events

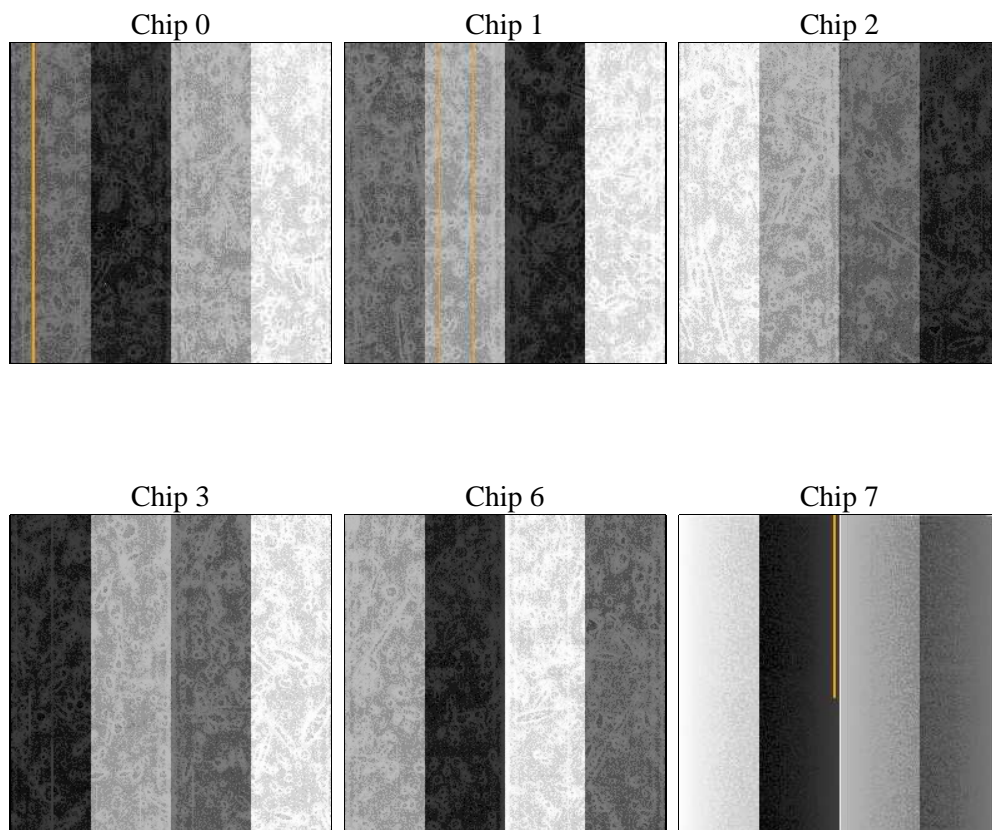
2 OBI

2.1 OBI

2.1.1 Images



2.1.2 Bias



2.1.3 Parameters

obi_num	0	Obi number	sched_exp_time	0.0	[s] Scheduled observation exposure time
ascdsver	8.4.5	Processing system revision	ontime	7795.1999709606	Sum of GTIs [s]
caldsver	4.5.2	 	ontime0	3499.1524043679	Sum of GTIs [s]
date	2012-10-10T03:17:33	Date and time of file creation	ontime1	3551.0496559739	Sum of GTIs [s]
revision	3	Processing version of data	ontime2	3304.7737690806	Sum of GTIs [s]
			ontime3	3385.633725673	Sum of GTIs [s]
			ontime6	3669.4451759458	Sum of GTIs [s]
			ontime7	7795.1999709606	Sum of GTIs [s]
			l1events	1438570	Number of level 1 events

2.1.4 Events

	ccd 0	ccd 1	ccd 2	ccd 3	ccd 6	ccd 7		ccd 0	ccd 1	ccd 2	ccd 3	ccd 6	ccd 7
level 1 events	196314	201185	189305	193449	215405	442912	grade 0 events	95318	96705	91055	94431	103413	101208
rejected events	23764	25914	25082	25051	25792	41669		48%	48%	48%	48%	48%	22%
rejected %	12%	12%	13%	12%	11%	9%	grade 1 events	483	482	484	468	508	256
								0%	0%	0%	0%	0%	0%
							grade 2 events	30462	31030	28949	29184	32832	88075
								15%	15%	15%	15%	15%	19%
							grade 3 events	11088	11256	10398	10717	11781	40991
								5%	5%	5%	5%	5%	9%
							grade 4 events	10771	11039	10288	10681	11750	40435
								5%	5%	5%	5%	5%	9%
							grade 5 events	1754	1785	1548	1685	1974	8218
								0%	0%	0%	0%	0%	1%
							grade 6 events	24911	25241	23533	23385	29837	130534
								12%	12%	12%	12%	13%	29%
							grade 7 events	21527	23647	23050	22898	23310	33195
								10%	11%	12%	11%	10%	7%

2.2 Compared Parameters

Parameter	Planned	Actual
Instrument	ACIS	ACIS
Detector	ACIS-012367	ACIS-012367
Grating	NONE	NONE
Data mode	FAINT	FAINT
Observation mode	SECONDARY	SECONDARY
[deg] Pointing RA	0	146.9986195263536
[deg] Pointing Dec	0	-23.02857845219395
[deg] Pointing Roll	0.0	234.655012221916
[mm] SIM focus pos	-0.782348	-0.7809083437167272
[mm] SIM defocus	0	0.7524282956875696
[mm] SIM translation stage pos	-233.592463	250.466033080201
[mm] SIM translation stage offset	0	-0.01005468664627074
[s] Observation start time (MET)	140951050.996073	140951049.97136
Observation start date	2002-06-20T09:04:11	2002-06-20T09:04:09
[s] Observation end time (MET)	140985679.59749	140985678.57278
Observation end date	2002-06-20T18:41:20	2002-06-20T18:41:18
Read mode	TIMED	TIMED

Parameter	Planned	Actual
Obspar format version number	7	7
Obspar file type	PREDICTED	ACTUAL
Obspar update status	NONE	UPDATED
On-chip summing requested	N	N
Subarray requested	NONE	NONE
Alternating exposures requested	N	N
[s] Primary exposure time	3.2	3.2

2.3 Star Slots

2.4 FID Slots

A Summary

A.1 Status

V&V Scientist	Jen Lauer
V&V Date (YYYY-MM-DD)	2012.10.19
V&V Edition	1
V&V Disposition and Status	OK
V&V Charge Time	7.7951999709606

A.2 Comments