

# V&V Reference Report

## L2 ASCDS Version : 8.4.5

Observation 61155 - L2 Version 3  
Chandra X-Ray Center

L2 Processing Date : Oct 10 2012

## Contents

<b>1</b>	<b>Front</b>	<b>2</b>
<b>2</b>	<b>OBI</b>	<b>3</b>
2.1	OBI . . . . .	3
2.1.1	Images . . . . .	3
2.1.2	Bias . . . . .	3
2.1.3	Parameters . . . . .	4
2.1.4	Events . . . . .	4
2.2	Compared Parameters . . . . .	5
2.3	Star Slots . . . . .	6
2.4	FID Slots . . . . .	6
<b>A</b>	<b>Summary</b>	<b>7</b>
A.1	Status . . . . .	7
A.2	Comments . . . . .	7

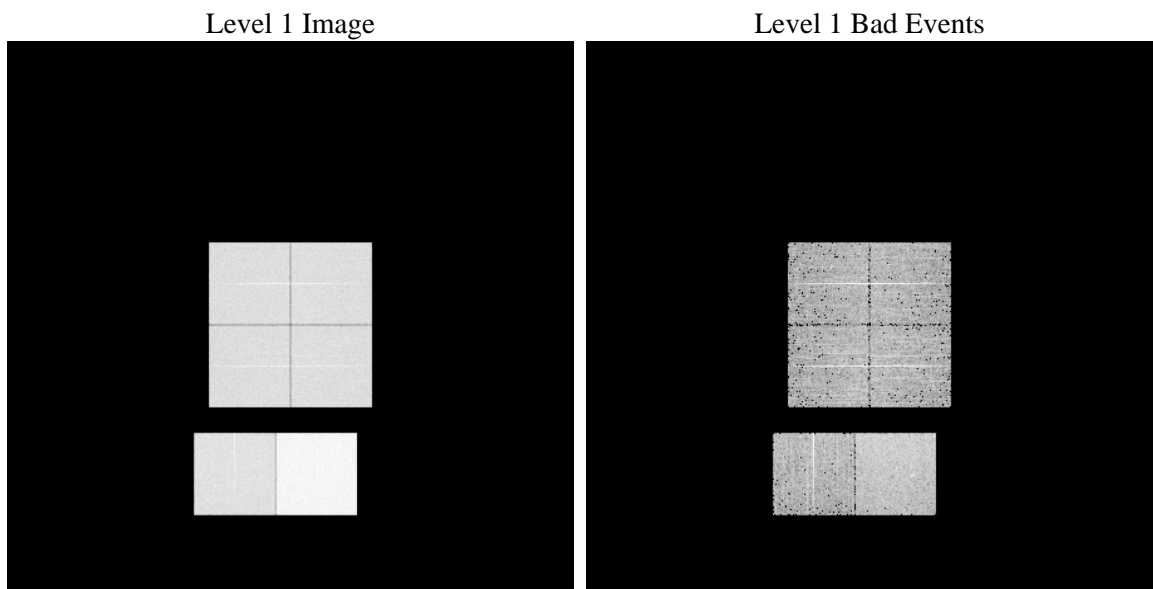
# 1 Front

seq_num	&#160	Sequence number
obs_id	61155	Observation id
title	ACIS-012367 diagnostics	Proposal title
observer	CHANDRA engineering request/realtime commanding	Principal investig
object	&#160	Source name
dtcycle	0	&#160
cycle	P	events from which exps? Prim/Second/Both
ra_targ	0.0	Observer's specified target RA [deg]
dec_targ	0.0	Observer's specified target Dec [deg]
ra_nom	18.975778429276	Nominal RA [deg]
dec_nom	36.020870798667	Nominal Dec [deg]
roll_nom	100.40867868452	Nominal Roll [deg]
revision	3	Processing version of data
ontime	7791.9999709725	Sum of GTIs [s]
livetime	7693.332975561	Livetime [s]
ontime0	3432.8936195076	Sum of GTIs [s]
ontime1	3441.3992632031	Sum of GTIs [s]
ontime2	3295.5944803953	Sum of GTIs [s]
ontime3	3314.8765902519	Sum of GTIs [s]
ontime6	3661.8692712784	Sum of GTIs [s]
ontime7	7791.9999709725	Sum of GTIs [s]
l2events	1212839	Number of level 2 events

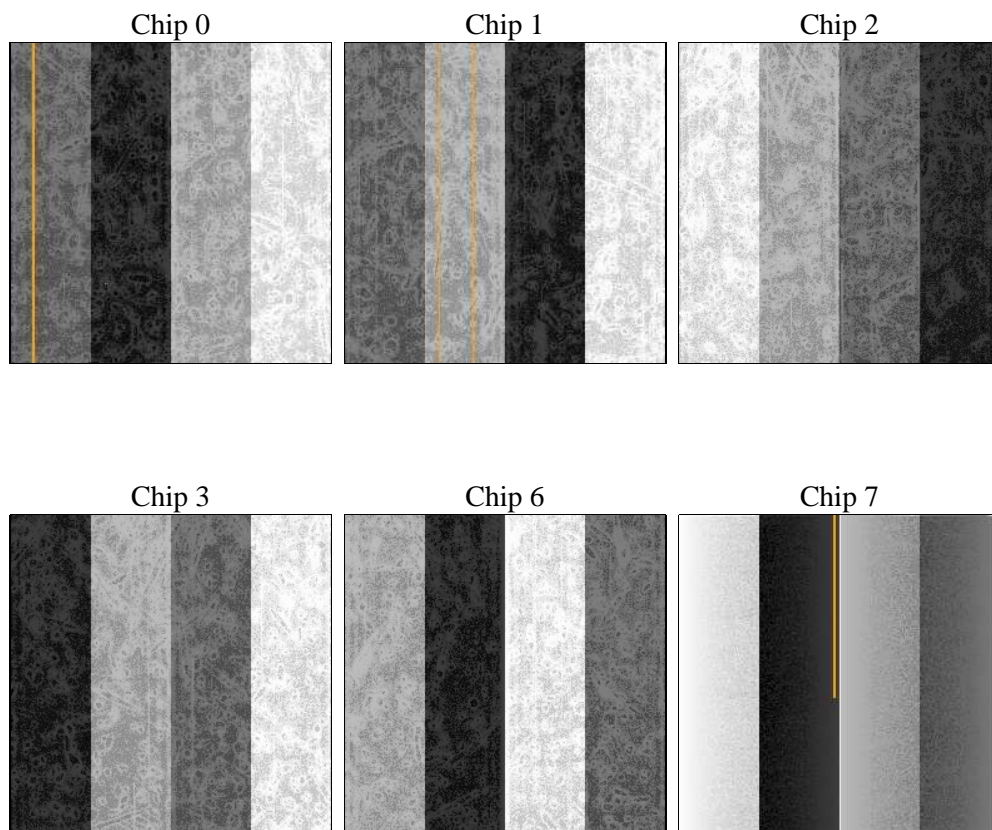
## 2 OBI

### 2.1 OBI

#### 2.1.1 Images



#### 2.1.2 Bias



### 2.1.3 Parameters

obi_num	0	Obi number	sched_exp_time	0.0	[s] Scheduled observation exposure time
ascdsver	8.4.5	Processing system revision	ontime	7791.9999709725	Sum of GTIs [s]
caldsver	4.5.2	&#160	ontime0	3432.8936195076	Sum of GTIs [s]
date	2012-10-10T05:13:09	Date and time of file creation	ontime1	3441.3992632031	Sum of GTIs [s]
revision	3	Processing version of data	ontime2	3295.5944803953	Sum of GTIs [s]
			ontime3	3314.8765902519	Sum of GTIs [s]
			ontime6	3661.8692712784	Sum of GTIs [s]
			ontime7	7791.9999709725	Sum of GTIs [s]
			l1events	1438781	Number of level 1 events

### 2.1.4 Events

	ccd 0	ccd 1	ccd 2	ccd 3	ccd 6	ccd 7		ccd 0	ccd 1	ccd 2	ccd 3	ccd 6	ccd 7
level 1 events	193758	195059	190756	192751	219405	447052	grade 0 events	93104	93835	91278	92550	103998	101900
rejected events	24327	24937	26196	26717	28040	43419		48%	48%	47%	48%	47%	22%
rejected %	12%	12%	13%	13%	12%	9%	grade 1 events	497	473	495	487	494	270
								0%	0%	0%	0%	0%	0%
							grade 2 events	29838	30052	28910	29178	33258	89043
								15%	15%	15%	15%	15%	19%
							grade 3 events	10920	10759	10441	10446	11951	40726
								5%	5%	5%	5%	5%	9%
							grade 4 events	10646	10701	10469	10504	11644	40622
								5%	5%	5%	5%	5%	9%
							grade 5 events	1724	1774	1587	1779	2001	8511
								0%	0%	0%	0%	0%	1%
							grade 6 events	25086	24775	23462	23356	30514	131516
								12%	12%	12%	12%	13%	29%
							grade 7 events	21943	22690	24114	24451	25545	34464
								11%	11%	12%	12%	11%	7%

## 2.2 Compared Parameters

Parameter	Planned	Actual
Instrument	ACIS	ACIS
Detector	ACIS-012367	ACIS-012367
Grating	NONE	NONE
Data mode	FAINT	FAINT
Observation mode	SECONDARY	SECONDARY
[deg] Pointing RA	0	18.97577842927567
[deg] Pointing Dec	0	36.02087079866698
[deg] Pointing Roll	0.0	100.4086786845158
[mm] SIM focus pos	-0.782348	-0.7809083437167272
[mm] SIM defocus	0	0.7524282956875696
[mm] SIM translation stage pos	-233.592463	250.4635187648994
[mm] SIM translation stage offset	0	-0.007540371344731511
[s] Observation start time (MET)	141179312.355	141179311.33071
Observation start date	2002-06-23T00:28:32	2002-06-23T00:28:31
[s] Observation end time (MET)	141214018.857	141214017.83213
Observation end date	2002-06-23T10:06:59	2002-06-23T10:06:57
Read mode	TIMED	TIMED

Parameter	Planned	Actual
Obspar format version number	7	7
Obspar file type	PREDICTED	ACTUAL
Obspar update status	NONE	UPDATED
On-chip summing requested	N	N
Subarray requested	NONE	NONE
Alternating exposures requested	N	N
[s] Primary exposure time	0.000000	3.2

## **2.3 Star Slots**

## **2.4 FID Slots**

## A Summary

### A.1 Status

V&V Scientist	Beth Sundheim
V&V Date (YYYY-MM-DD)	2012.10.19
V&V Edition	1
V&V Disposition and Status	OK
V&V Charge Time	7.7919999709725

### A.2 Comments