

V&V Reference Report

L2 ASCDS Version : 7.6.9

Observation 61155 - L2 Version 001
Chandra X-Ray Center

L2 Processing Date : Sep 21 2006

Contents

| | | |
|----------|-------------------------------|----------|
| 1 | Front | 2 |
| 2 | OBI | 3 |
| 2.1 | OBI | 3 |
| 2.1.1 | Images | 3 |
| 2.1.2 | Bias | 3 |
| 2.1.3 | Parameters | 4 |
| 2.1.4 | Events | 4 |
| 2.2 | Compared Parameters | 5 |
| 2.3 | Aspect | 6 |
| 2.4 | Star Slots | 8 |
| 2.5 | FID Slots | 8 |
| A | Summary | 9 |
| A.1 | Status | 9 |
| A.2 | Comments | 9 |

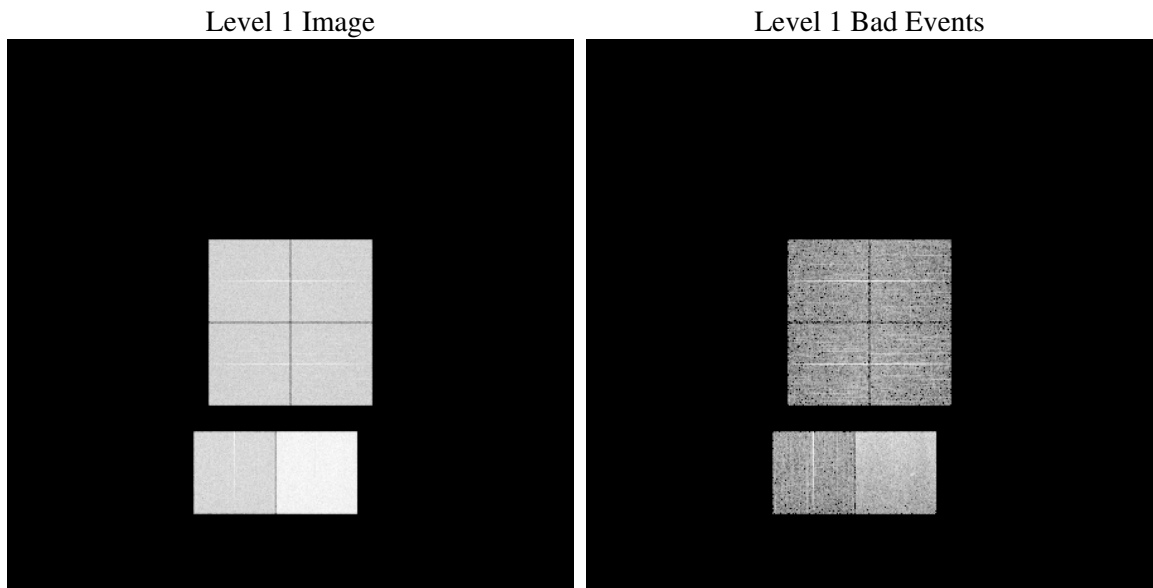
1 Front

| | |
|----------|---|
| seq_num | |
| obs_id | 61155 |
| title | ACIS-012367 diagnostics |
| observer | CHANDRA engineering request/realtime commanding |
| object | |
| dtcycle | 0 |
| cycle | P |
| ra_targ | 0.0 |
| dec_targ | 0.0 |
| ra_nom | 18.975778430463 |
| dec_nom | 36.020870797171 |
| roll_nom | 100.40867868497 |
| revision | 2 |
| ontime | 7791.9999709725 |
| livetime | 7693.332975561 |
| ontime0 | 3432.8936195076 |
| ontime1 | 3439.7992632091 |
| ontime2 | 3293.9944804013 |
| ontime3 | 3313.2765902579 |
| ontime6 | 3660.2692712843 |
| ontime7 | 7791.9999709725 |
| l2events | 1198191 |

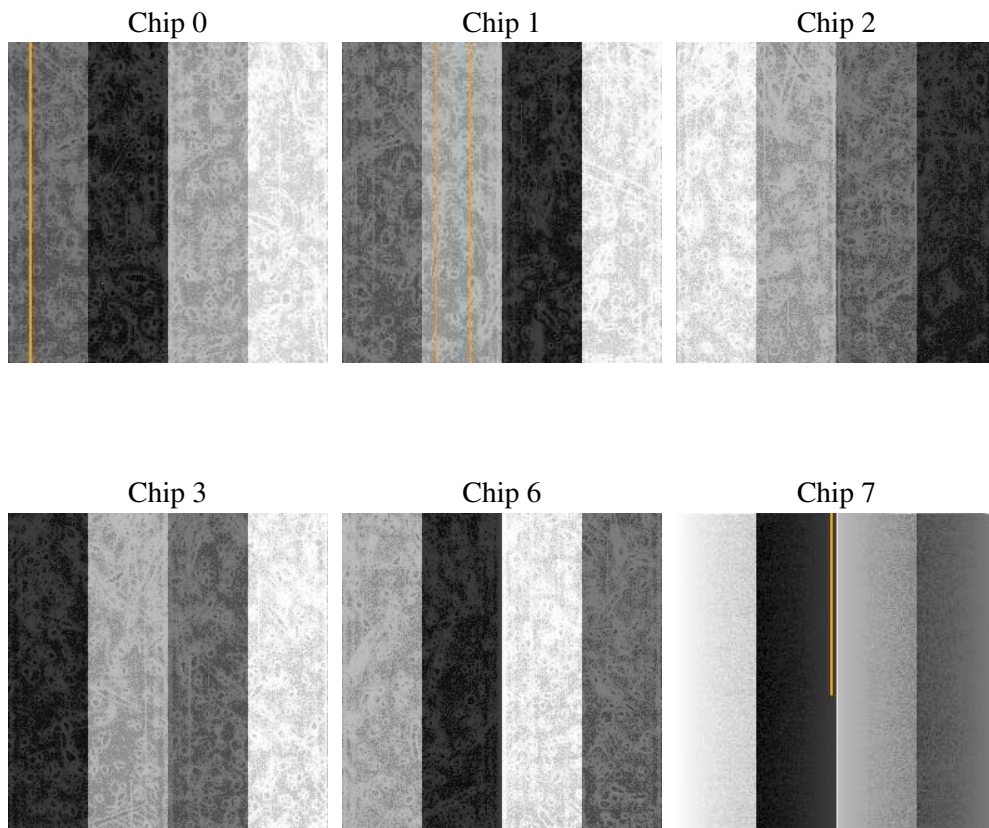
2 OBI

2.1 OBI

2.1.1 Images



2.1.2 Bias



2.1.3 Parameters

| | |
|----------|---------------------|
| obi_num | 0 |
| ascdsver | 7.6.9 |
| caldbver | 3.2.3 |
| date | 2006-09-21T11:18:15 |
| revision | 2 |

| | |
|----------------|-----------------|
| sched_exp_time | 0.0 |
| ontime | 7794.6008192897 |
| ontime0 | 3435.4944678247 |
| ontime1 | 3441.9768170416 |
| ontime2 | 3296.1309942305 |
| ontime3 | 3315.5772641003 |
| ontime6 | 3662.3647451401 |
| ontime7 | 7794.6008192897 |
| l1events | 1438781 |

2.1.4 Events

| | ccd 0 | ccd 1 | ccd 2 | ccd 3 | ccd 6 | ccd 7 |
|-----------------|--------|--------|--------|--------|--------|--------|
| level 1 events | 193758 | 195059 | 190756 | 192751 | 219405 | 447052 |
| rejected events | 24330 | 25095 | 26338 | 26880 | 28203 | 57617 |
| rejected % | 12% | 12% | 13% | 13% | 12% | 12% |

| | ccd 0 | ccd 1 | ccd 2 | ccd 3 | ccd 6 | ccd 7 |
|----------------|-------|-------|-------|-------|--------|--------|
| grade 0 events | 93108 | 93839 | 91283 | 92554 | 104009 | 71269 |
| | 48% | 48% | 47% | 48% | 47% | 15% |
| grade 1 events | 497 | 474 | 495 | 487 | 494 | 173 |
| | 0% | 0% | 0% | 0% | 0% | 0% |
| grade 2 events | 29834 | 30048 | 28905 | 29174 | 33247 | 117389 |
| | 15% | 15% | 15% | 15% | 15% | 26% |
| grade 3 events | 10921 | 10760 | 10444 | 10446 | 11954 | 28947 |
| | 5% | 5% | 5% | 5% | 5% | 6% |
| grade 4 events | 10648 | 10702 | 10471 | 10508 | 11646 | 28591 |
| | 5% | 5% | 5% | 5% | 5% | 6% |
| grade 5 events | 1725 | 1774 | 1587 | 1780 | 2003 | 7572 |
| | 0% | 0% | 0% | 0% | 0% | 1% |
| grade 6 events | 25084 | 24773 | 23460 | 23353 | 30510 | 143400 |
| | 12% | 12% | 12% | 12% | 13% | 32% |
| grade 7 events | 21941 | 22689 | 24111 | 24449 | 25542 | 49711 |
| | 11% | 11% | 12% | 12% | 11% | 11% |

2.2 Compared Parameters

| Parameter | Planned | Actual | Parameter | Planned | Actual |
|-----------------------------------|---------------------|-----------------------|---------------------------------|-----------|---------|
| Instrument | ACIS | ACIS | Obspar format version number | 6 | 6 |
| Detector | ACIS-012367 | ACIS-012367 | Obspar file type | PREDICTED | ACTUAL |
| Grating | NONE | NONE | Obspar update status | NONE | UPDATED |
| Data mode | FAINT | FAINT | On-chip summing requested | N | N |
| Observation mode | SECONDARY | SECONDARY | Subarray requested | NONE | NONE |
| Pointing RA | 0 | 18.97577843046277 | Alternating exposures requested | N | N |
| Pointing Dec | 0 | 36.02087079717074 | Primary exposure time | 0.000000 | 3.2 |
| Pointing Roll | 0.0 | 100.4086786849712 | | | |
| SIM focus pos (mm) | -0.782348 | -0.7809083437167272 | | | |
| SIM defocus (mm) | 0 | 0.7524282956875696 | | | |
| SIM translation stage pos (mm) | -233.592463 | 250.4635187648994 | | | |
| SIM translation stage offset (mm) | 0 | -0.007540371344731511 | | | |
| Observation start time | 141179312.355 | 141179311.33071 | | | |
| Observation start date | 2002-06-23T00:28:32 | 2002-06-23T00:28:31 | | | |
| Observation end time | 141214018.857 | 141214017.83213 | | | |
| Observation end date | 2002-06-23T10:06:59 | 2002-06-23T10:06:57 | | | |
| Read mode | TIMED | TIMED | | | |

2.3 Aspect

2.4 Star Slots

2.5 FID Slots

A Summary

A.1 Status

| | |
|----------------------------|------------|
| V&V Scientist | Jen Lauer |
| V&V Date (YYYY-MM-DD) | 2006.09.21 |
| V&V Edition | 1 |
| V&V Disposition and Status | OK |
| V&V Charge Time | 7.79199997 |

A.2 Comments