

# V&V Reference Report

## L2 ASCDS Version : 8.4.5

Observation 61132 - L2 Version 3  
Chandra X-Ray Center

L2 Processing Date : Oct 11 2012

## Contents

<b>1</b>	<b>Front</b>	<b>2</b>
<b>2</b>	<b>OBI</b>	<b>3</b>
2.1	OBI . . . . .	3
2.1.1	Images . . . . .	3
2.1.2	Bias . . . . .	3
2.1.3	Parameters . . . . .	4
2.1.4	Events . . . . .	4
2.2	Compared Parameters . . . . .	5
2.3	Star Slots . . . . .	6
2.4	FID Slots . . . . .	6
<b>A</b>	<b>Summary</b>	<b>7</b>
A.1	Status . . . . .	7
A.2	Comments . . . . .	7

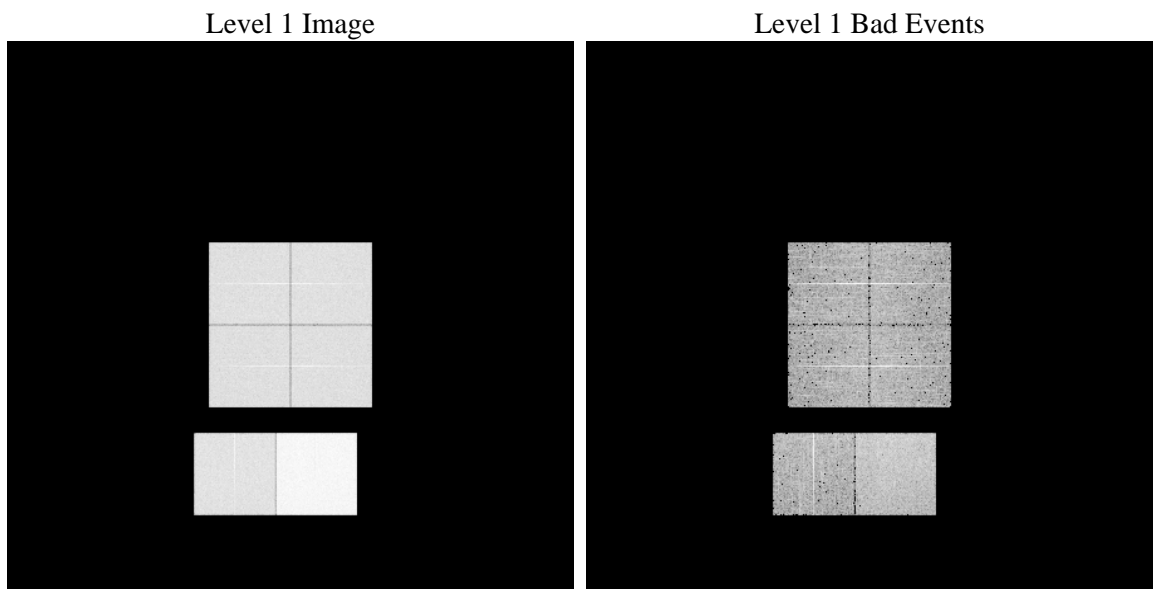
# 1 Front

seq_num	&#160	Sequence number
obs_id	61132	Observation id
title	ACIS-012367 diagnostics	Proposal title
observer	CHANDRA engineering request/realtime commanding	Principal investig
object	&#160	Source name
dtycle	0	&#160
cycle	P	events from which exps? Prim/Second/Both
ra_targ	0.0	Observer's specified target RA [deg]
dec_targ	0.0	Observer's specified target Dec [deg]
ra_nom	345.97140987021	Nominal RA [deg]
dec_nom	22.310922253849	Nominal Dec [deg]
roll_nom	124.72840749475	Nominal Roll [deg]
revision	3	Processing version of data
ontime	8412.4571036398	Sum of GTIs [s]
livetime	8305.93350642	Livetime [s]
ontime0	3889.2388322353	Sum of GTIs [s]
ontime1	3891.2163852751	Sum of GTIs [s]
ontime2	3698.0189077258	Sum of GTIs [s]
ontime3	3694.7781866789	Sum of GTIs [s]
ontime6	4051.2890985608	Sum of GTIs [s]
ontime7	8412.4571036398	Sum of GTIs [s]
l2events	1307456	Number of level 2 events

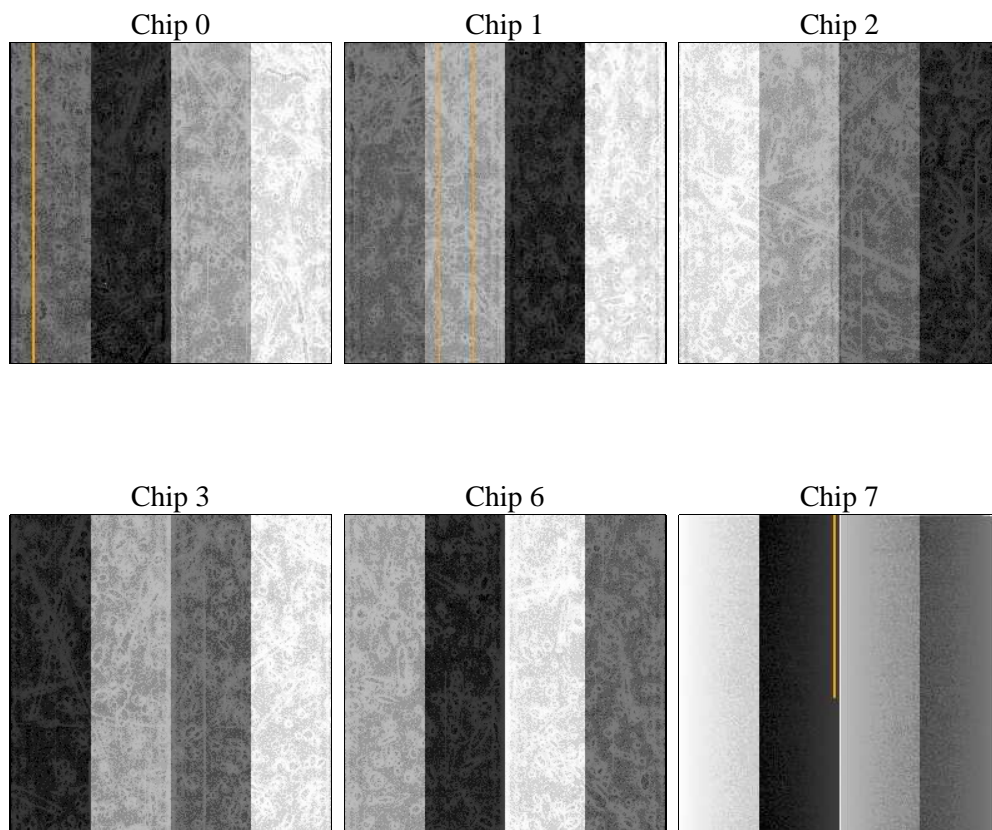
## 2 OBI

### 2.1 OBI

#### 2.1.1 Images



#### 2.1.2 Bias



### 2.1.3 Parameters

obi_num	0	Obi number	sched_exp_time	0.0	[s] Scheduled observation exposure time
ascdsver	8.4.5	Processing system revision	ontime	8412.4571036398	Sum of GTIs [s]
caldbver	4.5.2	&#160	ontime0	3889.2388322353	Sum of GTIs [s]
date	2012-10-11T18:50:47	Date and time of file creation	ontime1	3891.2163852751	Sum of GTIs [s]
revision	3	Processing version of data	ontime2	3698.0189077258	Sum of GTIs [s]
			ontime3	3694.7781866789	Sum of GTIs [s]
			ontime6	4051.2890985608	Sum of GTIs [s]
			ontime7	8412.4571036398	Sum of GTIs [s]
			l1events	1556776	Number of level 1 events

### 2.1.4 Events

	ccd 0	ccd 1	ccd 2	ccd 3	ccd 6	ccd 7		ccd 0	ccd 1	ccd 2	ccd 3	ccd 6	ccd 7
level 1 events	215298	216409	207681	210306	234662	472420	grade 0 events	103561	104386	100127	101837	111819	106350
rejected events	28279	27951	27950	29709	30497	47807		48%	48%	48%	48%	47%	22%
rejected %	13%	12%	13%	14%	12%	10%	grade 1 events	529	486	501	516	503	274
								0%	0%	0%	0%	0%	0%
							grade 2 events	33303	33411	32101	31907	35582	94678
								15%	15%	15%	15%	15%	20%
							grade 3 events	11797	11992	11326	11285	12650	43102
								5%	5%	5%	5%	5%	9%
							grade 4 events	11754	11800	11350	11258	12711	42635
								5%	5%	5%	5%	5%	9%
							grade 5 events	1868	1974	1798	1885	2193	8859
								0%	0%	0%	0%	0%	1%
							grade 6 events	27417	27969	25983	25615	32570	140482
								12%	12%	12%	12%	13%	29%
							grade 7 events	25069	24391	24495	26003	26634	36040
								11%	11%	11%	12%	11%	7%

## 2.2 Compared Parameters

Parameter	Planned	Actual	Parameter	Planned	Actual
Instrument	ACIS	ACIS	Obspar format version number	7	7
Detector	ACIS-012367	ACIS-012367	Obspar file type	PREDICTED	ACTUAL
Grating	NONE	NONE	Obspar update status	NONE	UPDATED
Data mode	FAINT	FAINT	On-chip summing requested	N	N
Observation mode	SECONDARY	SECONDARY	Subarray requested	NONE	NONE
[deg] Pointing RA	0	345.9714098702142	Alternating exposures requested	N	N
[deg] Pointing Dec	0	22.31092225384885	[s] Primary exposure time	3.2	3.2
[deg] Pointing Roll	0.0	124.7284074947546			
[mm] SIM focus pos	-0.782348	-0.7809083437167272			
[mm] SIM defocus	0	0.7524282956875696			
[mm] SIM translation stage pos	-233.592463	250.466033080201			
[mm] SIM translation stage offset	0	-0.01005468664627074			
[s] Observation start time (MET)	142589624.263248	142589623.23854			
Observation start date	2002-07-09T08:13:44	2002-07-09T08:13:43			
[s] Observation end time (MET)	142610934.014126	142610932.98941			
Observation end date	2002-07-09T14:08:54	2002-07-09T14:08:52			
Read mode	TIMED	TIMED			

## 2.3 Star Slots

## 2.4 FID Slots

## A Summary

### A.1 Status

V&V Scientist	Beth Sundheim
V&V Date (YYYY-MM-DD)	2012.10.21
V&V Edition	1
V&V Disposition and Status	OK
V&V Charge Time	8.4124571036398

### A.2 Comments