

V&V Reference Report

L2 ASCDS Version : 7.6.9

Observation 61128 - L2 Version 001
Chandra X-Ray Center

L2 Processing Date : Sep 23 2006

Contents

1	Front	2
2	OBI	3
2.1	OBI	3
2.1.1	Images	3
2.1.2	Bias	3
2.1.3	Parameters	4
2.1.4	Events	4
2.2	Compared Parameters	5
2.3	Aspect	6
2.4	Star Slots	8
2.5	FID Slots	8
A	Summary	9
A.1	Status	9
A.2	Comments	9

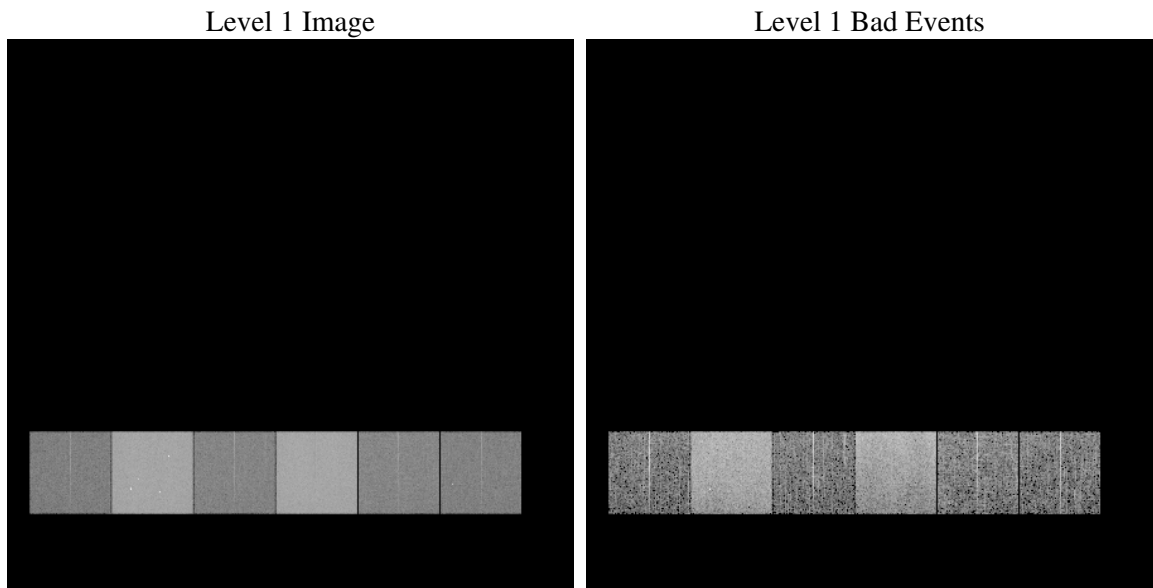
1 Front

seq_num	
obs_id	61128
title	ACIS-456789 diagnostics
observer	CHANDRA engineering request/realtime commanding
object	
dtcycle	0
cycle	P
ra_targ	0.0
dec_targ	0.0
ra_nom	163.69736078519
dec_nom	-20.828519431466
roll_nom	232.2390338381
revision	2
ontime	7293.2973240316
livetime	7200.9452018183
ontime4	2593.9964401722
ontime5	7789.2047761977
ontime6	2794.8996503949
ontime7	7293.2973240316
ontime8	2898.1258356273
ontime9	2707.2685102224
l2events	1187795

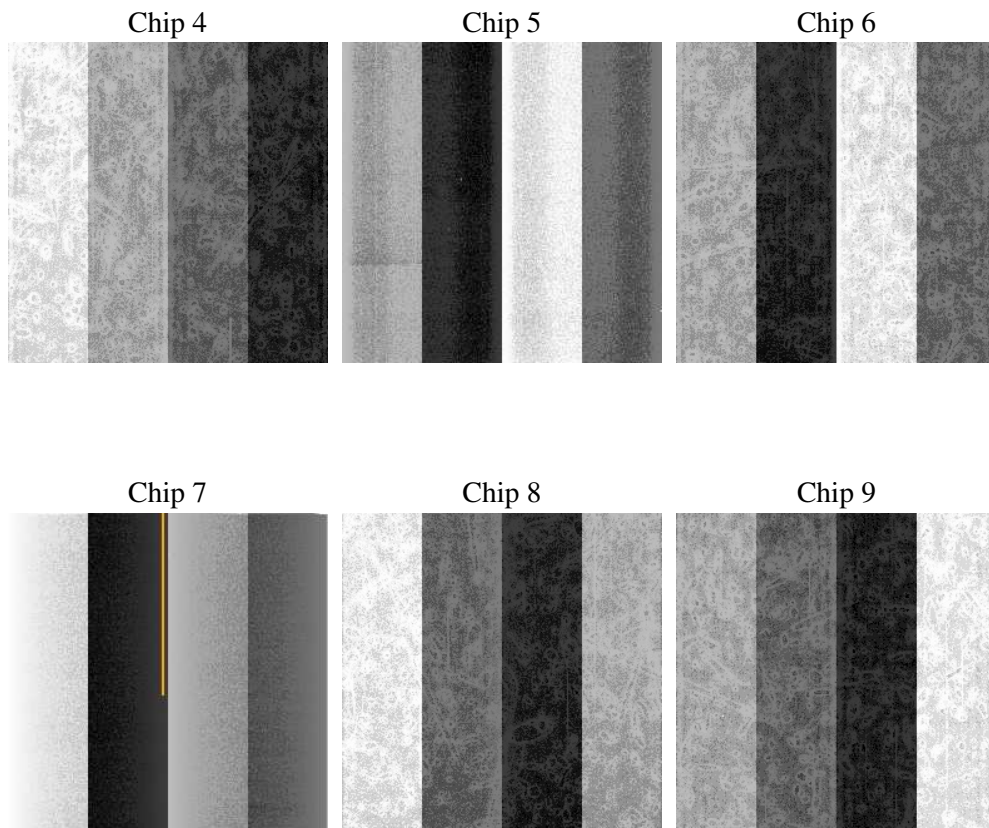
2 OBI

2.1 OBI

2.1.1 Images



2.1.2 Bias



2.1.3 Parameters

obi_num	0
ascdsver	7.6.9
caldsver	3.2.3
date	2006-09-23T03:49:19
revision	2

sched_exp_time	0.0
ontime	7295.4939876497
ontime4	2596.0699837804
ontime5	7791.3603998125
ontime6	2797.0142340064
ontime7	7295.4939876497
ontime8	2900.7272546291
ontime9	2709.5062138438
l1events	1442553

2.1.4 Events

	ccd 4	ccd 5	ccd 6	ccd 7	ccd 8	ccd 9
level 1 events	141802	402710	164452	408665	172494	152430
rejected events	20819	62390	21702	51904	24551	20896
rejected %	14%	15%	13%	12%	14%	13%

	ccd 4	ccd 5	ccd 6	ccd 7	ccd 8	ccd 9
grade 0 events	68289	46042	78044	66890	81462	72200
	48%	11%	47%	16%	47%	47%
grade 1 events	348	257	378	167	396	392
	0%	0%	0%	0%	0%	0%
grade 2 events	21467	159719	24974	106515	26327	23177
	15%	39%	15%	26%	15%	15%
grade 3 events	7509	12272	8770	27208	9329	8108
	5%	3%	5%	6%	5%	5%
grade 4 events	7501	12174	8762	26647	9424	8089
	5%	3%	5%	6%	5%	5%
grade 5 events	1385	7011	1468	7012	1831	1502
	0%	1%	0%	1%	1%	0%
grade 6 events	16332	110249	22387	129657	21564	20092
	11%	27%	13%	31%	12%	13%
grade 7 events	18971	54986	19669	44569	22161	18870
	13%	13%	11%	10%	12%	12%

2.2 Compared Parameters

Parameter	Planned	Actual	Parameter	Planned	Actual
Instrument	ACIS	ACIS	Obspar format version number	6	6
Detector	ACIS-456789	ACIS-456789	Obspar file type	PREDICTED	ACTUAL
Grating	NONE	NONE	Obspar update status	NONE	UPDATED
Data mode	FAINT	FAINT	On-chip summing requested	N	N
Observation mode	SECONDARY	SECONDARY	Subarray requested	NONE	NONE
Pointing RA	0	163.6973607851889	Alternating exposures requested	N	N
Pointing Dec	0	-20.82851943146643	Primary exposure time	0.000000	3.2
Pointing Roll	0.0	232.2390338381015			
SIM focus pos (mm)	-0.684267	-0.6828225247311905			
SIM defocus (mm)	0	0.8505141146731063			
SIM translation stage pos (mm)	-190.132523	250.466033080201			
SIM translation stage offset (mm)	0	-0.01005468664627074			
Observation start time	143007094.48	143007093.45568			
Observation start date	2002-07-14T04:11:34	2002-07-14T04:11:33			
Observation end time	143043285.182	143043284.15716			
Observation end date	2002-07-14T14:14:45	2002-07-14T14:14:44			
Read mode	TIMED	TIMED			

2.3 Aspect

2.4 Star Slots

2.5 FID Slots

A Summary

A.1 Status

V&V Scientist	Beth Sundheim
V&V Date (YYYY-MM-DD)	2006.09.24
V&V Edition	1
V&V Disposition and Status	OK
V&V Charge Time	7.29329732

A.2 Comments