

V&V Reference Report

L2 ASCDS Version : 8.4.5

Observation 61114 - L2 Version 3
Chandra X-Ray Center

L2 Processing Date : Oct 12 2012

Contents

1	Front	2
2	OBI Primary	3
2.1	OBI	3
2.1.1	Images	3
2.1.2	Bias	3
2.1.3	Parameters	4
2.1.4	Events	4
2.2	Compared Parameters	5
2.3	Star Slots	6
2.4	FID Slots	6
3	OBI Secondary	6
3.1	OBI	6
3.1.1	Images	6
3.1.2	Bias	6
3.1.3	Parameters	7
3.1.4	Events	7
A	Summary	8
A.1	Status	8
A.2	Comments	8

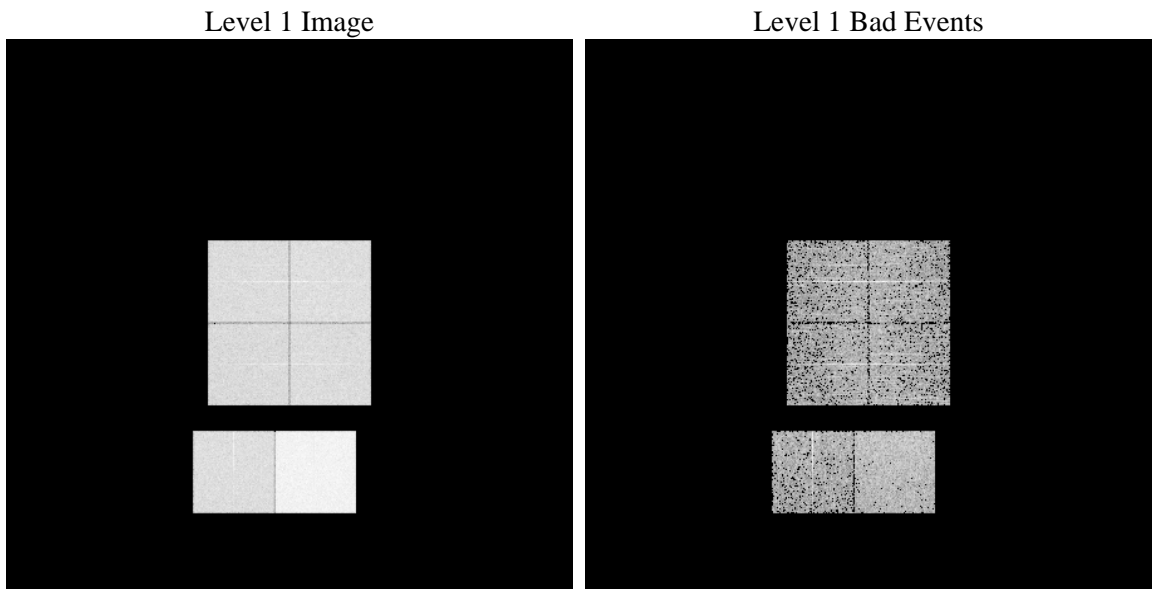
1 Front

seq_num	 	Sequence number
obs_id	61114	Observation id
title	ACIS-012367 diagnostics	Proposal title
observer	CHANDRA engineering request/realtime commanding	Principal investig
object	 	Source name
dtcycle	0	
cycle	P	events are from which exps? P[rimary] S[econdar
ra_targ	0.0	Observer's specified target RA [deg]
dec_targ	0.0	Observer's specified target Dec [deg]
ra_nom	312.02288753698	Nominal RA [deg]
dec_nom	-48.975635894705	Nominal Dec [deg]
roll_nom	25.466364653715	Nominal Roll [deg]
revision	3	Processing version of data
ontime	4210.9169915617	Sum of GTIs [s]
livetime	4168.1517545599	Livetime [s]
ontime0	2039.1054868698	Sum of GTIs [s]
ontime1	2154.0276298821	Sum of GTIs [s]
ontime2	1828.8893267214	Sum of GTIs [s]
ontime3	1939.8525097072	Sum of GTIs [s]
ontime6	2026.7771668732	Sum of GTIs [s]
ontime7	4210.9169915617	Sum of GTIs [s]
l2events	668607	Number of level 2 events

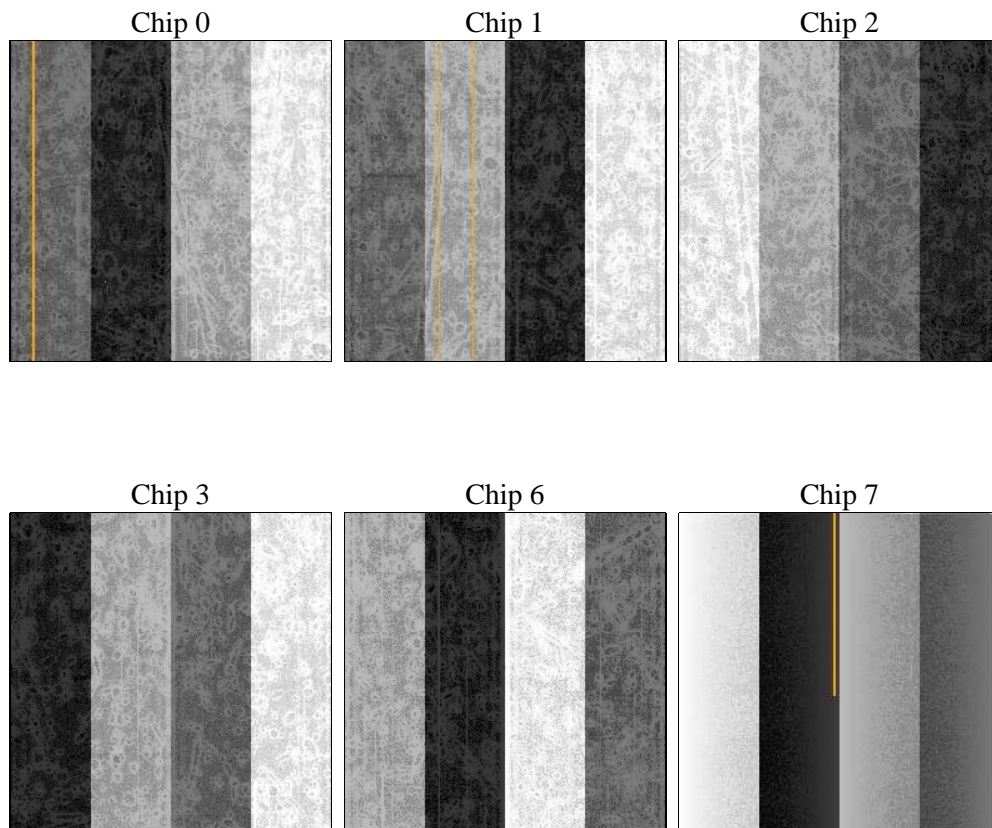
2 OBI Primary

2.1 OBI

2.1.1 Images



2.1.2 Bias



2.1.3 Parameters

obi_num	1	Obi number	sched_exp_time	0.0	[s] Scheduled observation exposure time
ascdsver	8.4.5	Processing system revision	ontime	4210.9169915617	Sum of GTIs [s]
caldbver	4.5.2	 	ontime0	2039.1054868698	Sum of GTIs [s]
date	2012-10-12T00:24:41	Date and time of file creation	ontime1	2154.0276298821	Sum of GTIs [s]
revision	3	Processing version of data	ontime2	1828.8893267214	Sum of GTIs [s]
			ontime3	1939.8525097072	Sum of GTIs [s]
			ontime6	2026.7771668732	Sum of GTIs [s]
			ontime7	4210.9169915617	Sum of GTIs [s]
			l1events	789885	Number of level 1 events

2.1.4 Events

	ccd 0	ccd 1	ccd 2	ccd 3	ccd 6	ccd 7		ccd 0	ccd 1	ccd 2	ccd 3	ccd 6	ccd 7
level 1 events	110504	117496	101031	108798	115857	236199	grade 0 events	53380	56725	48457	52609	55199	54796
rejected events	13374	14500	13287	14710	14309	21715		48%	48%	47%	48%	47%	23%
rejected %	12%	12%	13%	13%	12%	9%	grade 1 events	299	342	292	321	348	186
								0%	0%	0%	0%	0%	0%
							grade 2 events	17114	18327	15448	16535	17817	47860
								15%	15%	15%	15%	15%	20%
							grade 3 events	6129	6564	5592	5978	6300	22008
								5%	5%	5%	5%	5%	9%
							grade 4 events	6181	6563	5551	5976	6239	21973
								5%	5%	5%	5%	5%	9%
							grade 5 events	968	1110	947	974	1126	4340
								0%	0%	0%	0%	0%	1%
							grade 6 events	14326	15016	12696	13187	15993	68048
								12%	12%	12%	12%	13%	28%
							grade 7 events	12107	12849	12048	13218	12835	16988
								10%	10%	11%	12%	11%	7%

2.2 Compared Parameters

Parameter	Planned	Actual	Parameter	Planned	Actual
Instrument	ACIS	ACIS	Obspar format version number	7	7
Detector	ACIS-012367	ACIS-012367	Obspar file type	PREDICTED	ACTUAL
Grating	NONE	NONE	Obspar update status	NONE	UPDATED
Data mode	FAINT	FAINT	On-chip summing requested	N	N
Observation mode	SECONDARY	SECONDARY	Subarray requested	NONE	NONE
[deg] Pointing RA	0	312.0228875369784	Alternating exposures requested	N	Y
[deg] Pointing Dec	0	-48.97563589470508	[s] Primary exposure time	0.000000	4
[deg] Pointing Roll	0.0	25.46636465371471	[s] Secondary exposure time	N/A	3.2
[mm] SIM focus pos	-0.782348	-0.6828225247311905	Duty cycle	N/A	1
[mm] SIM defocus	0	0.8505141146731063			
[mm] SIM translation stage pos	-233.592463	250.466033080201			
[mm] SIM translation stage offset	0	-0.01005468664627074			
[s] Observation start time (MET)	143470710.199	143470709.17472			
Observation start date	2002-07-19T12:58:30	2002-07-19T12:58:29			
[s] Observation end time (MET)	143482612.5	143482611.47521			
Observation end date	2002-07-19T16:16:52	2002-07-19T16:16:51			
Read mode	TIMED	TIMED			

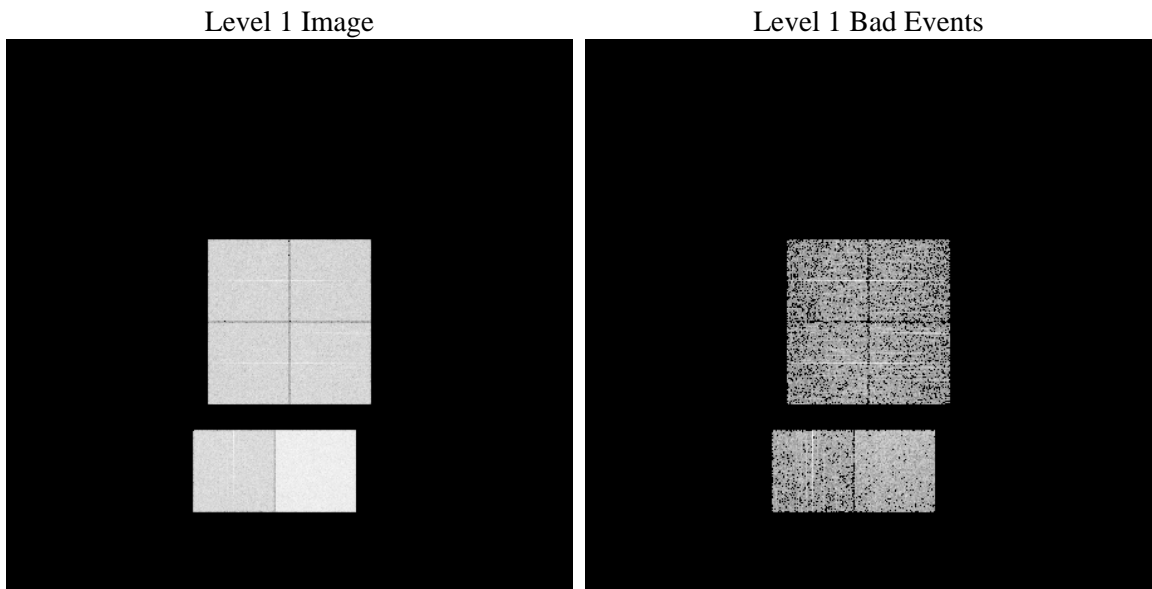
2.3 Star Slots

2.4 FID Slots

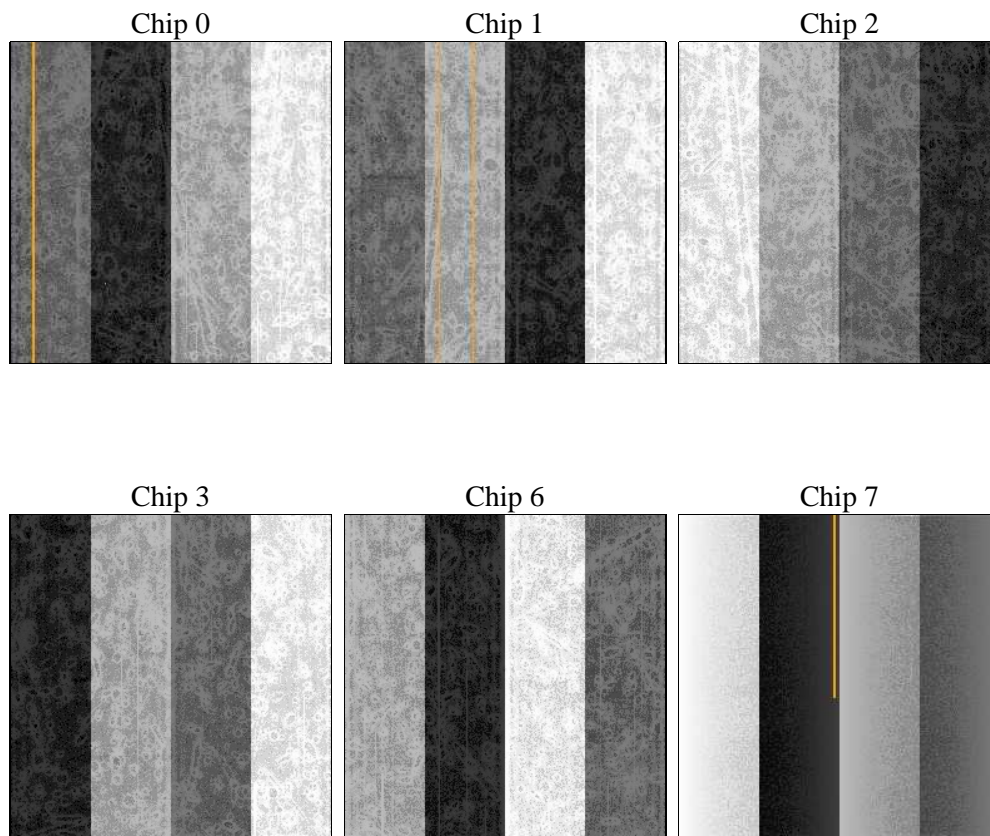
3 OBI Secondary

3.1 OBI

3.1.1 Images



3.1.2 Bias



3.1.3 Parameters

obi_num	1	Obi number	sched_exp_time	0.0	[s] Scheduled observation exposure time
ascdsver	8.4.5	Processing system revision			
caldsver	4.5.2	 			
date	2012-10-12T00:23:27	Date and time of file creation			
revision	3	Processing version of data			
			ontime	3377.3169592321	Sum of GTIs [s]
			ontime0	1491.0316842496	Sum of GTIs [s]
			ontime1	1432.6929644048	Sum of GTIs [s]
			ontime2	1480.2124711871	Sum of GTIs [s]
			ontime3	1541.75119102	Sum of GTIs [s]
			ontime6	1635.6592707634	Sum of GTIs [s]
			ontime7	3377.3169592321	Sum of GTIs [s]
			l1events	618559	Number of level 1 events

3.1.4 Events

	ccd 0	ccd 1	ccd 2	ccd 3	ccd 6	ccd 7
level 1 events	82026	79504	83443	86787	96010	190789
rejected events	10426	10378	11498	11951	13102	18517
rejected %	12%	13%	13%	13%	13%	9%

	ccd 0	ccd 1	ccd 2	ccd 3	ccd 6	ccd 7
grade 0 events	39436	38111	39946	41794	45167	44139
	48%	47%	47%	48%	47%	23%
grade 1 events	210	215	230	225	236	122
	0%	0%	0%	0%	0%	0%
grade 2 events	12791	12342	12574	13147	14429	38271
	15%	15%	15%	15%	15%	20%
grade 3 events	4502	4422	4506	4728	5131	17475
	5%	5%	5%	5%	5%	9%
grade 4 events	4540	4353	4588	4674	5180	17440
	5%	5%	5%	5%	5%	9%
grade 5 events	721	734	711	807	872	3712
	0%	0%	0%	0%	0%	1%
grade 6 events	10478	10052	10331	10493	13001	55119
	12%	12%	12%	12%	13%	28%
grade 7 events	9348	9275	10557	10919	11994	14511
	11%	11%	12%	12%	12%	7%

A Summary

A.1 Status

V&V Scientist	Jen Lauer
V&V Date (YYYY-MM-DD)	2012.10.22
V&V Edition	1
V&V Disposition and Status	OK
V&V Charge Time	7.5882339507938

A.2 Comments