

# V&V Reference Report

## L2 ASCDS Version : 8.4.5

Observation 61107 - L2 Version 3  
Chandra X-Ray Center

L2 Processing Date : Oct 12 2012

## Contents

<b>1</b>	<b>Front</b>	<b>2</b>
<b>2</b>	<b>OBI</b>	<b>3</b>
2.1	OBI . . . . .	3
2.1.1	Images . . . . .	3
2.1.2	Bias . . . . .	3
2.1.3	Parameters . . . . .	4
2.1.4	Events . . . . .	4
2.2	Compared Parameters . . . . .	5
2.3	Star Slots . . . . .	6
2.4	FID Slots . . . . .	6
<b>A</b>	<b>Summary</b>	<b>7</b>
A.1	Status . . . . .	7
A.2	Comments . . . . .	7

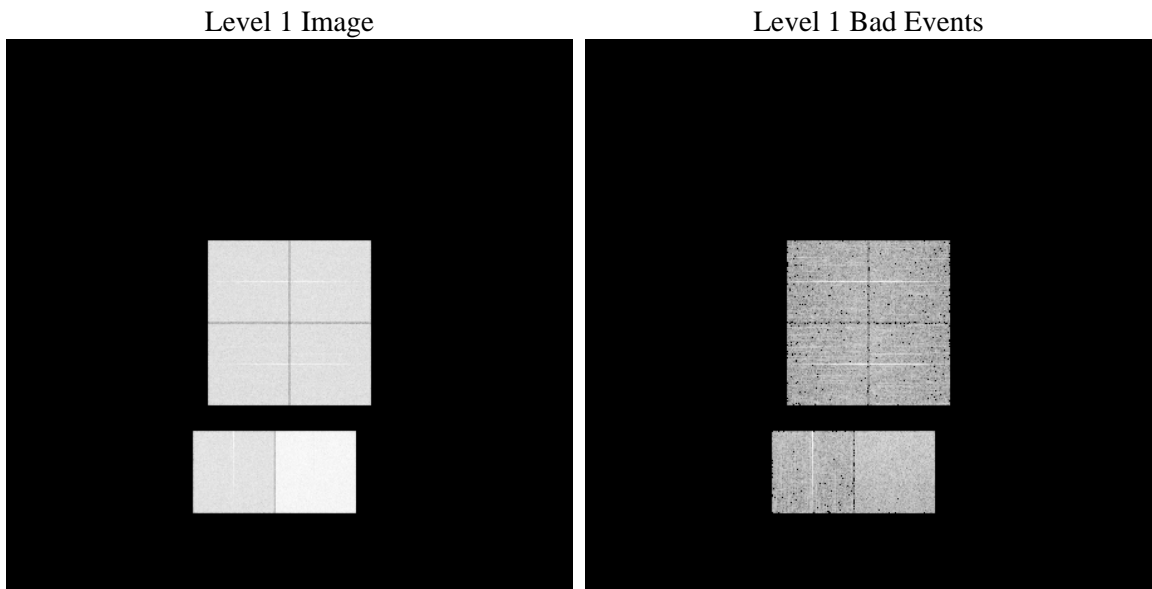
# 1 Front

seq_num	&#160	Sequence number
obs_id	61107	Observation id
title	ACIS-012367 diagnostics	Proposal title
observer	CHANDRA engineering request/realtime commanding	Principal investig
object	&#160	Source name
dtcycle	0	&#160
cycle	P	events from which exps? Prim/Second/Both
ra_targ	0.0	Observer's specified target RA [deg]
dec_targ	0.0	Observer's specified target Dec [deg]
ra_nom	293.03882242538	Nominal RA [deg]
dec_nom	-42.996452210044	Nominal Dec [deg]
roll_nom	334.3016343554	Nominal Roll [deg]
revision	3	Processing version of data
ontime	8460.3667384386	Sum of GTIs [s]
livetime	8353.2364805752	Livetime [s]
ontime0	3876.2745040059	Sum of GTIs [s]
ontime1	4016.9088066518	Sum of GTIs [s]
ontime2	3698.0192272663	Sum of GTIs [s]
ontime3	3832.2938321233	Sum of GTIs [s]
ontime6	4130.2604349256	Sum of GTIs [s]
ontime7	8460.3667384386	Sum of GTIs [s]
l2events	1315853	Number of level 2 events

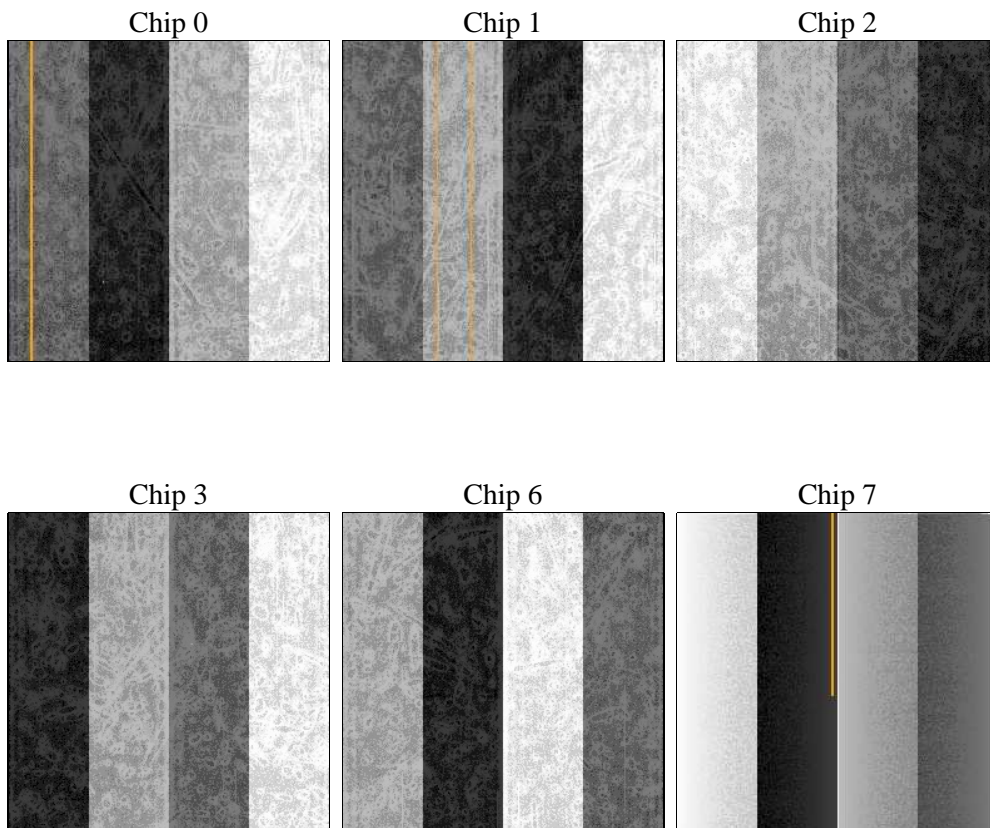
## 2 OBI

### 2.1 OBI

#### 2.1.1 Images



#### 2.1.2 Bias



### 2.1.3 Parameters

obi_num	0	Obi number	sched_exp_time	0.0	[s] Scheduled observation exposure time
ascdsver	8.4.5	Processing system revision	ontime	8460.3667384386	Sum of GTIs [s]
caldbver	4.5.2	&#160	ontime0	3876.2745040059	Sum of GTIs [s]
date	2012-10-12T05:10:24	Date and time of file creation	ontime1	4016.9088066518	Sum of GTIs [s]
revision	3	Processing version of data	ontime2	3698.0192272663	Sum of GTIs [s]
			ontime3	3832.2938321233	Sum of GTIs [s]
			ontime6	4130.2604349256	Sum of GTIs [s]
			ontime7	8460.3667384386	Sum of GTIs [s]
			l1events	1556165	Number of level 1 events

### 2.1.4 Events

	ccd 0	ccd 1	ccd 2	ccd 3	ccd 6	ccd 7		ccd 0	ccd 1	ccd 2	ccd 3	ccd 6	ccd 7
level 1 events	211973	219585	206702	213865	236573	467467	grade 0 events	101885	106086	99264	103569	112229	106195
rejected events	26466	26335	27609	28389	30598	43866		48%	48%	48%	48%	47%	22%
rejected %	12%	11%	13%	13%	12%	9%	grade 1 events	536	518	457	562	512	277
								0%	0%	0%	0%	0%	0%
							grade 2 events	33055	34609	31687	32818	35755	94167
								15%	15%	15%	15%	15%	20%
							grade 3 events	11723	12226	11101	11483	12691	42713
								5%	5%	5%	5%	5%	9%
							grade 4 events	11691	12237	11078	11649	12474	41846
								5%	5%	5%	5%	5%	8%
							grade 5 events	1767	1995	1755	1870	2202	8494
								0%	0%	0%	0%	0%	1%
							grade 6 events	27153	28244	25963	26131	33001	138838
								12%	12%	12%	12%	13%	29%
							grade 7 events	24163	23670	25397	25783	27709	34937
								11%	10%	12%	12%	11%	7%

## 2.2 Compared Parameters

Parameter	Planned	Actual
Instrument	ACIS	ACIS
Detector	ACIS-012367	ACIS-012367
Grating	NONE	NONE
Data mode	FAINT	FAINT
Observation mode	SECONDARY	SECONDARY
[deg] Pointing RA	0	293.0388224253845
[deg] Pointing Dec	0	-42.99645221004417
[deg] Pointing Roll	0.0	334.3016343554008
[mm] SIM focus pos	-0.782348	-0.7809083437167272
[mm] SIM defocus	0	0.7524282956875696
[mm] SIM translation stage pos	-233.592463	250.466033080201
[mm] SIM translation stage offset	0	-0.01005468664627074
[s] Observation start time (MET)	143960824.219589	143960823.19487
Observation start date	2002-07-25T05:07:04	2002-07-25T05:07:03
[s] Observation end time (MET)	143982133.970466	143982132.94575
Observation end date	2002-07-25T11:02:14	2002-07-25T11:02:12
Read mode	TIMED	TIMED

Parameter	Planned	Actual
Obspar format version number	7	7
Obspar file type	PREDICTED	ACTUAL
Obspar update status	NONE	UPDATED
On-chip summing requested	N	N
Subarray requested	NONE	NONE
Alternating exposures requested	N	N
[s] Primary exposure time	3.2	3.2

## **2.3 Star Slots**

## **2.4 FID Slots**

## A Summary

### A.1 Status

V&V Scientist	Beth Sundheim
V&V Date (YYYY-MM-DD)	2012.10.21
V&V Edition	1
V&V Disposition and Status	OK
V&V Charge Time	8.4603667384386

### A.2 Comments