

V&V Reference Report

L2 ASCDS Version : 7.6.9

Observation 61058 - L2 Version 001
Chandra X-Ray Center

L2 Processing Date : Sep 28 2006

Contents

1	Front	2
2	OBI	3
2.1	OBI	3
2.1.1	Images	3
2.1.2	Bias	3
2.1.3	Parameters	4
2.1.4	Events	4
2.2	Compared Parameters	5
2.3	Aspect	6
2.4	Star Slots	8
2.5	FID Slots	8
A	Summary	9
A.1	Status	9
A.2	Comments	9

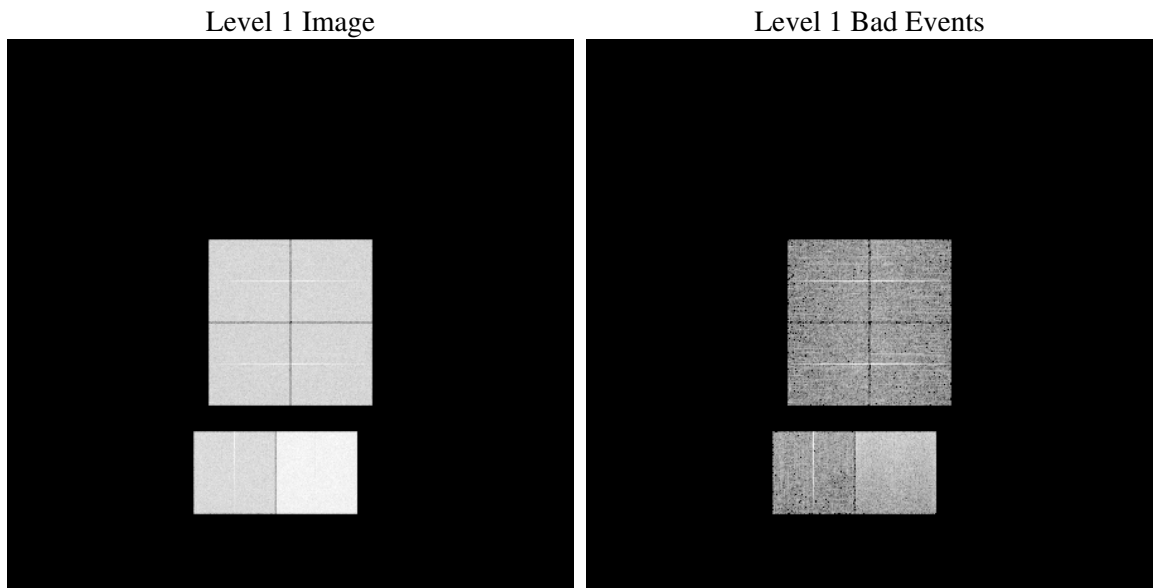
1 Front

seq_num	
obs_id	61058
title	ACIS-012367 diagnostics
observer	CHANDRA engineering request/realtime commanding
object	
dtcycle	0
cycle	P
ra_targ	0.0
dec_targ	0.0
ra_nom	346.97102574267
dec_nom	8.9999003779474
roll_nom	147.35121677583
revision	2
ontime	8412.7999686599
livetime	8306.2720298767
ontime0	4008.3743988574
ontime1	4011.6553536654
ontime2	3843.0229356885
ontime3	3914.3255068064
ontime6	4274.0767725706
ontime7	8412.7999686599
l2events	1285433

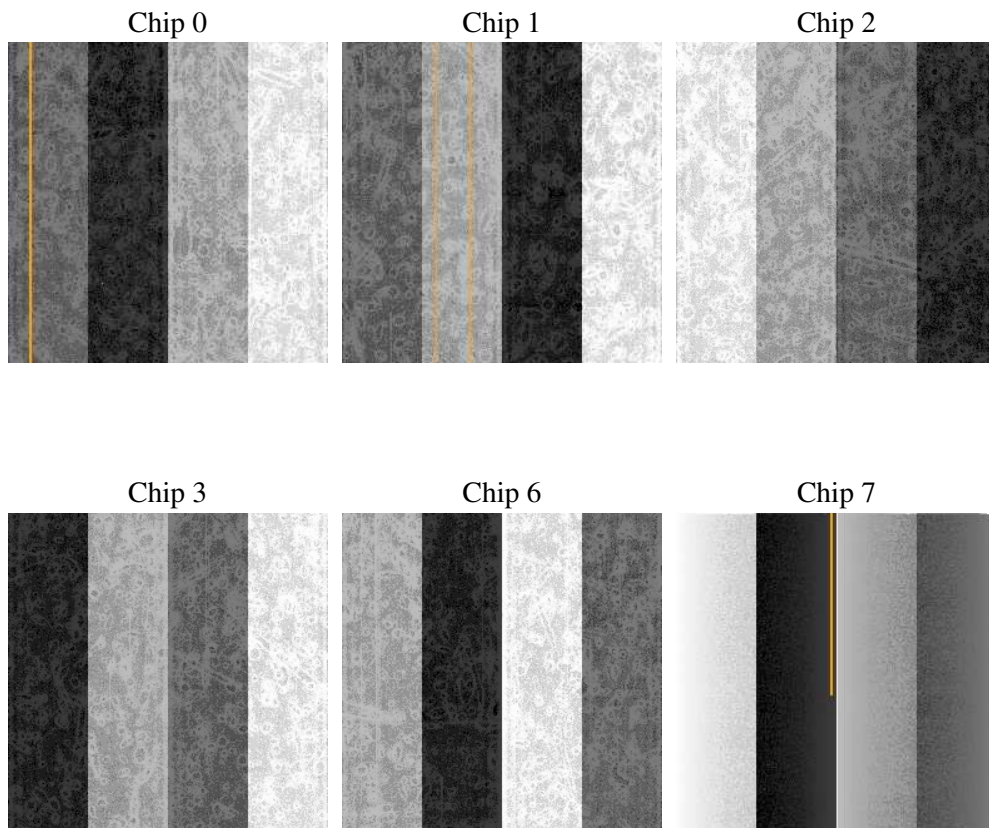
2 OBI

2.1 OBI

2.1.1 Images



2.1.2 Bias



2.1.3 Parameters

obi_num	2
ascdsver	7.6.9
caldbver	3.2.3
date	2006-09-28T22:43:32
revision	2

sched_exp_time	0.0
ontime	8462.2561588585
ontime0	4031.8436459601
ontime1	4031.8424709141
ontime2	3863.3103038967
ontime3	3934.6128152907
ontime6	4297.605160892
ontime7	8462.2561588585
l1events	1553521

2.1.4 Events

	ccd 0	ccd 1	ccd 2	ccd 3	ccd 6	ccd 7
level 1 events	216081	217593	209027	215252	240045	455523
rejected events	28127	29884	28436	29978	31978	62745
rejected %	13%	13%	13%	13%	13%	13%

	ccd 0	ccd 1	ccd 2	ccd 3	ccd 6	ccd 7
grade 0 events	104827	103316	103143	105681	113605	67841
	48%	47%	49%	49%	47%	14%
grade 1 events	613	453	569	575	512	146
	0%	0%	0%	0%	0%	0%
grade 2 events	32437	33772	29825	30974	36460	123586
	15%	15%	14%	14%	15%	27%
grade 3 events	12162	11804	11828	12059	12911	28157
	5%	5%	5%	5%	5%	6%
grade 4 events	12091	11929	11688	12062	12732	27196
	5%	5%	5%	5%	5%	5%
grade 5 events	1888	1898	1810	1978	2166	7737
	0%	0%	0%	0%	0%	1%
grade 6 events	27453	27758	25043	25372	33434	148341
	12%	12%	11%	11%	13%	32%
grade 7 events	24610	26663	25121	26551	28225	52519
	11%	12%	12%	12%	11%	11%

2.2 Compared Parameters

Parameter	Planned	Actual	Parameter	Planned	Actual
Instrument	ACIS	ACIS	Obspar format version number	6	6
Detector	ACIS-012367	ACIS-012367	Obspar file type	PREDICTED	ACTUAL
Grating	NONE	NONE	Obspar update status	NONE	UPDATED
Data mode	FAINT	FAINT	On-chip summing requested	N	N
Observation mode	SECONDARY	SECONDARY	Subarray requested	NONE	NONE
Pointing RA	0	346.9710257426704	Alternating exposures requested	N	N
Pointing Dec	0	8.999900377947398	Primary exposure time	0.000000	3.2
Pointing Roll	0.0	147.3512167758309			
SIM focus pos (mm)	-0.782348	-0.6828225247311905			
SIM defocus (mm)	0	0.8505141146731063			
SIM translation stage pos (mm)	-233.592463	250.466033080201			
SIM translation stage offset (mm)	0	-0.01005468664627074			
Observation start time	146700708.782422	146700707.7577			
Observation start date	2002-08-25T22:11:49	2002-08-25T22:11:47			
Observation end time	146722736.033331	146722735.00861			
Observation end date	2002-08-26T04:18:56	2002-08-26T04:18:55			
Read mode	TIMED	TIMED			

2.3 Aspect

2.4 Star Slots

2.5 FID Slots

A Summary

A.1 Status

V&V Scientist	Jen Lauer
V&V Date (YYYY-MM-DD)	2006.09.29
V&V Edition	1
V&V Disposition and Status	OK
V&V Charge Time	8.41279996

A.2 Comments

The ACIS focal plane temperature was above calibration limits for the entire observation.