

V&V Reference Report

L2 ASCDS Version : 7.6.9

Observation 61056 - L2 Version 001
Chandra X-Ray Center

L2 Processing Date : Sep 28 2006

Contents

1	Front	2
2	OBI	3
2.1	OBI	3
2.1.1	Images	3
2.1.2	Bias	3
2.1.3	Parameters	4
2.1.4	Events	4
2.2	Compared Parameters	5
2.3	Aspect	6
2.4	Star Slots	8
2.5	FID Slots	8
A	Summary	9
A.1	Status	9
A.2	Comments	9

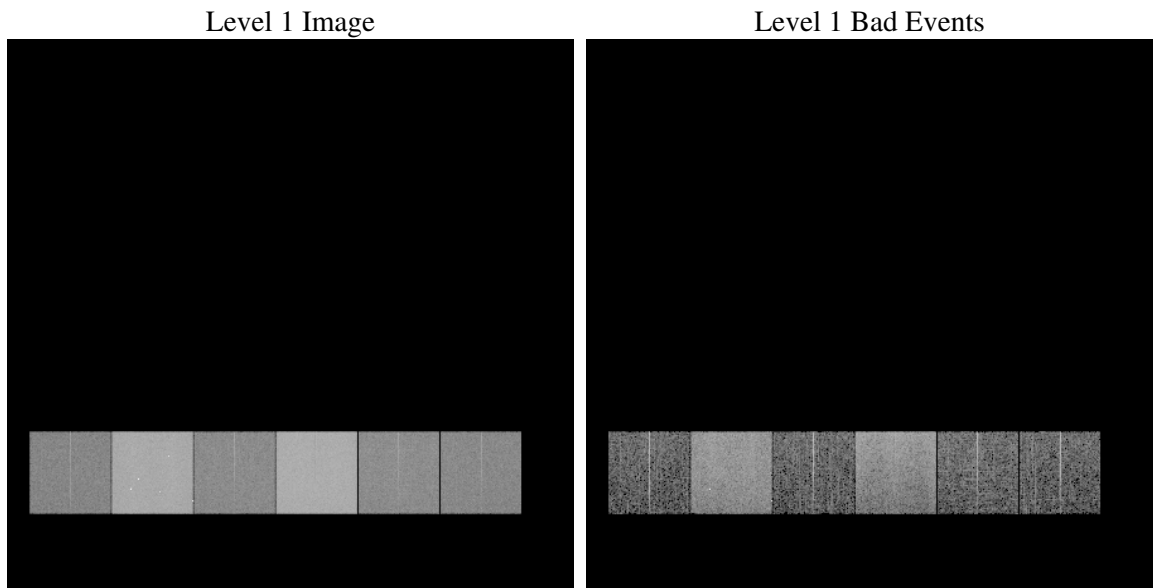
1 Front

seq_num	
obs_id	61056
title	ACIS-456789 diagnostics
observer	CHANDRA engineering request/realtime commanding
object	
dtcycle	0
cycle	P
ra_targ	0.0
dec_targ	0.0
ra_nom	109.99356264604
dec_nom	40.028172382378
roll_nom	67.133087630574
revision	2
ontime	8265.4639137387
livetime	8160.8016327981
ontime4	3008.7229469121
ontime5	8459.9622304142
ontime6	3280.9284390211
ontime7	8265.4639137387
ontime8	3371.758901149
ontime9	3131.7176484764
l2events	1283077

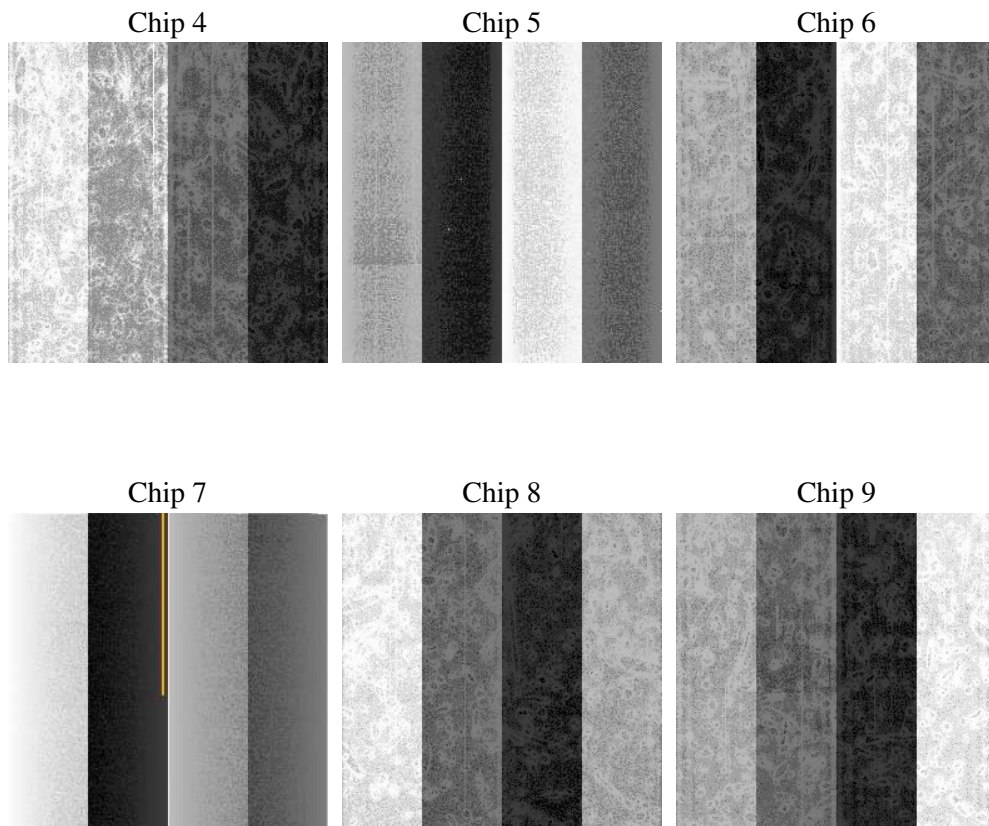
2 OBI

2.1 OBI

2.1.1 Images



2.1.2 Bias



2.1.3 Parameters

obi_num	1
ascdsver	7.6.9
caldsver	3.2.3
date	2006-09-28T23:38:42
revision	2

sched_exp_time	0.0
ontime	8267.7861721814
ontime4	3010.9220853448
ontime5	8462.2434488535
ontime6	3283.1686174572
ontime7	8267.7861721814
ontime8	3373.9169996083
ontime9	3134.0809469223
l1events	1556697

2.1.4 Events

	ccd 4	ccd 5	ccd 6	ccd 7	ccd 8	ccd 9
level 1 events	157879	413667	182483	442578	190822	169268
rejected events	22012	66178	22875	57931	24941	22105
rejected %	13%	15%	12%	13%	13%	13%

	ccd 4	ccd 5	ccd 6	ccd 7	ccd 8	ccd 9
grade 0 events	79943	37776	87454	66773	91901	82072
	50%	9%	47%	15%	48%	48%
grade 1 events	503	213	421	162	462	426
	0%	0%	0%	0%	0%	0%
grade 2 events	20892	168205	27602	118925	28785	24903
	13%	40%	15%	26%	15%	14%
grade 3 events	8964	10476	9639	27319	10449	9288
	5%	2%	5%	6%	5%	5%
grade 4 events	9058	10290	9687	27068	10526	9342
	5%	2%	5%	6%	5%	5%
grade 5 events	1419	7250	1585	7437	1831	1690
	0%	1%	0%	1%	0%	0%
grade 6 events	17171	120880	25375	144697	24378	21721
	10%	29%	13%	32%	12%	12%
grade 7 events	19929	58577	20720	50197	22490	19826
	12%	14%	11%	11%	11%	11%

2.2 Compared Parameters

Parameter	Planned	Actual	Parameter	Planned	Actual
Instrument	ACIS	ACIS	Obspar format version number	6	6
Detector	ACIS-456789	ACIS-456789	Obspar file type	PREDICTED	ACTUAL
Grating	NONE	NONE	Obspar update status	NONE	UPDATED
Data mode	FAINT	FAINT	On-chip summing requested	N	N
Observation mode	SECONDARY	SECONDARY	Subarray requested	NONE	NONE
Pointing RA	0	109.9935626460405	Alternating exposures requested	N	N
Pointing Dec	0	40.02817238237782	Primary exposure time	0.000000	3.2
Pointing Roll	0.0	67.13308763057404			
SIM focus pos (mm)	-0.684267	-0.6828225247311905			
SIM defocus (mm)	0	0.8505141146731063			
SIM translation stage pos (mm)	-190.132523	250.4635187648994			
SIM translation stage offset (mm)	0	-0.007540371344731511			
Observation start time	146925700.391704	146925699.36698			
Observation start date	2002-08-28T12:41:40	2002-08-28T12:41:39			
Observation end time	146948186.842632	146948185.81791			
Observation end date	2002-08-28T18:56:27	2002-08-28T18:56:25			
Read mode	TIMED	TIMED			

2.3 Aspect

2.4 Star Slots

2.5 FID Slots

A Summary

A.1 Status

V&V Scientist	Jen Lauer
V&V Date (YYYY-MM-DD)	2006.09.29
V&V Edition	1
V&V Disposition and Status	OK
V&V Charge Time	8.26546391

A.2 Comments

The ACIS focal plane temperature was above calibration limits for the entire observation.