

V&V Reference Report

L2 ASCDS Version : 8.4.5

Observation 61051 - L2 Version 3
Chandra X-Ray Center

L2 Processing Date : Oct 13 2012

Contents

1	Front	2
2	OBI	3
2.1	OBI	3
2.1.1	Images	3
2.1.2	Bias	3
2.1.3	Parameters	4
2.1.4	Events	4
2.2	Compared Parameters	5
2.3	Star Slots	6
2.4	FID Slots	6
A	Summary	7
A.1	Status	7
A.2	Comments	7

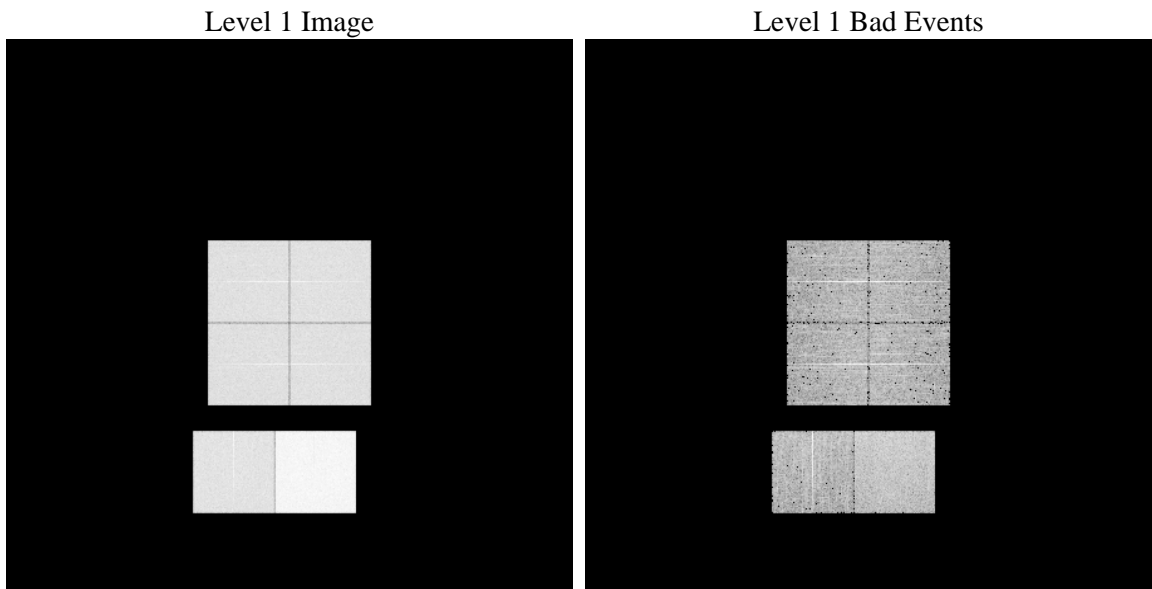
1 Front

seq_num	 	Sequence number
obs_id	61051	Observation id
title	ACIS-012367 diagnostics	Proposal title
observer	CHANDRA engineering request/realtime commanding	Principal investig
object	 	Source name
dtcycle	0	
cycle	P	events from which exps? Prim/Second/Both
ra_targ	0.0	Observer's specified target RA [deg]
dec_targ	0.0	Observer's specified target Dec [deg]
ra_nom	289.53148626435	Nominal RA [deg]
dec_nom	-42.316626085699	Nominal Dec [deg]
roll_nom	291.61795267284	Nominal Roll [deg]
revision	3	Processing version of data
ontime	8409.5999686718	Sum of GTIs [s]
livetime	8303.1125502153	Livetime [s]
ontime0	4034.0967990756	Sum of GTIs [s]
ontime1	4102.198344171	Sum of GTIs [s]
ontime2	3849.4418709278	Sum of GTIs [s]
ontime3	3933.5427081883	Sum of GTIs [s]
ontime6	4193.0925880969	Sum of GTIs [s]
ontime7	8409.5999686718	Sum of GTIs [s]
l2events	1303694	Number of level 2 events

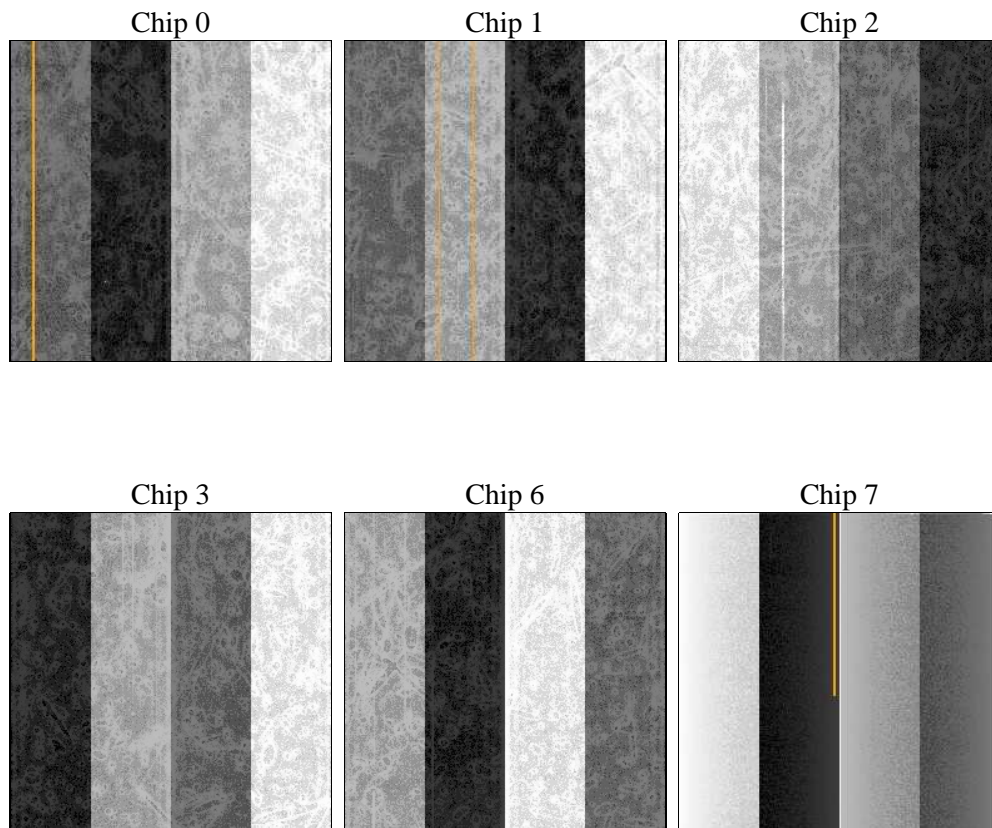
2 OBI

2.1 OBI

2.1.1 Images



2.1.2 Bias



2.1.3 Parameters

obi_num	0	Obi number	sched_exp_time	0.0	[s] Scheduled observation exposure time
ascdsver	8.4.5	Processing system revision	ontime	8409.5999686718	Sum of GTIs [s]
caldbver	4.5.2	 	ontime0	4034.0967990756	Sum of GTIs [s]
date	2012-10-13T05:27:22	Date and time of file creation	ontime1	4102.198344171	Sum of GTIs [s]
revision	3	Processing version of data	ontime2	3849.4418709278	Sum of GTIs [s]
			ontime3	3933.5427081883	Sum of GTIs [s]
			ontime6	4193.0925880969	Sum of GTIs [s]
			ontime7	8409.5999686718	Sum of GTIs [s]
			l1events	1553592	Number of level 1 events

2.1.4 Events

	ccd 0	ccd 1	ccd 2	ccd 3	ccd 6	ccd 7		ccd 0	ccd 1	ccd 2	ccd 3	ccd 6	ccd 7
level 1 events	216166	220176	210444	214780	236317	455709	grade 0 events	104969	105899	103655	105874	112430	102193
rejected events	27966	28511	28718	28987	32055	46083		48%	48%	49%	49%	47%	22%
rejected %	12%	12%	13%	13%	13%	10%	grade 1 events	558	520	595	592	525	262
								0%	0%	0%	0%	0%	0%
							grade 2 events	32659	34398	29908	31180	35065	90832
								15%	15%	14%	14%	14%	19%
							grade 3 events	12209	12128	11730	12254	12532	41201
								5%	5%	5%	5%	5%	9%
							grade 4 events	12093	11932	11937	12299	12596	40773
								5%	5%	5%	5%	5%	8%
							grade 5 events	1972	1949	1818	1882	2180	8609
								0%	0%	0%	0%	0%	1%
							grade 6 events	27342	28471	25439	25405	32910	137127
								12%	12%	12%	11%	13%	30%
							grade 7 events	24364	24879	25362	25294	28079	34712
								11%	11%	12%	11%	11%	7%

2.2 Compared Parameters

Parameter	Planned	Actual
Instrument	ACIS	ACIS
Detector	ACIS-012367	ACIS-012367
Grating	NONE	NONE
Data mode	FAINT	FAINT
Observation mode	SECONDARY	SECONDARY
[deg] Pointing RA	0	289.5314862643511
[deg] Pointing Dec	0	-42.31662608569888
[deg] Pointing Roll	0.0	291.6179526728383
[mm] SIM focus pos	-0.782348	-0.7809083437167272
[mm] SIM defocus	0	0.7524282956875696
[mm] SIM translation stage pos	-233.592463	250.4635187648994
[mm] SIM translation stage offset	0	-0.007540371344731511
[s] Observation start time (MET)	147385226.360647	147385225.33594
Observation start date	2002-09-02T20:20:26	2002-09-02T20:20:25
[s] Observation end time (MET)	147407634.911571	147407633.88686
Observation end date	2002-09-03T02:33:55	2002-09-03T02:33:53
Read mode	TIMED	TIMED

Parameter	Planned	Actual
Obspar format version number	7	7
Obspar file type	PREDICTED	ACTUAL
Obspar update status	NONE	UPDATED
On-chip summing requested	N	N
Subarray requested	NONE	NONE
Alternating exposures requested	N	N
[s] Primary exposure time	0.000000	3.2

2.3 Star Slots

2.4 FID Slots

A Summary

A.1 Status

V&V Scientist	Beth Sundheim
V&V Date (YYYY-MM-DD)	2012.10.23
V&V Edition	1
V&V Disposition and Status	OK
V&V Charge Time	8.4095999686718

A.2 Comments