

V&V Reference Report

L2 ASCDS Version : 7.6.9

Observation 61029 - L2 Version 001
Chandra X-Ray Center

L2 Processing Date : Oct 4 2006

Contents

1	Front	2
2	OBI	3
2.1	OBI	3
2.1.1	Images	3
2.1.2	Bias	3
2.1.3	Parameters	4
2.1.4	Events	4
2.2	Compared Parameters	5
2.3	Aspect	6
2.4	Star Slots	8
2.5	FID Slots	8
A	Summary	9
A.1	Status	9
A.2	Comments	9

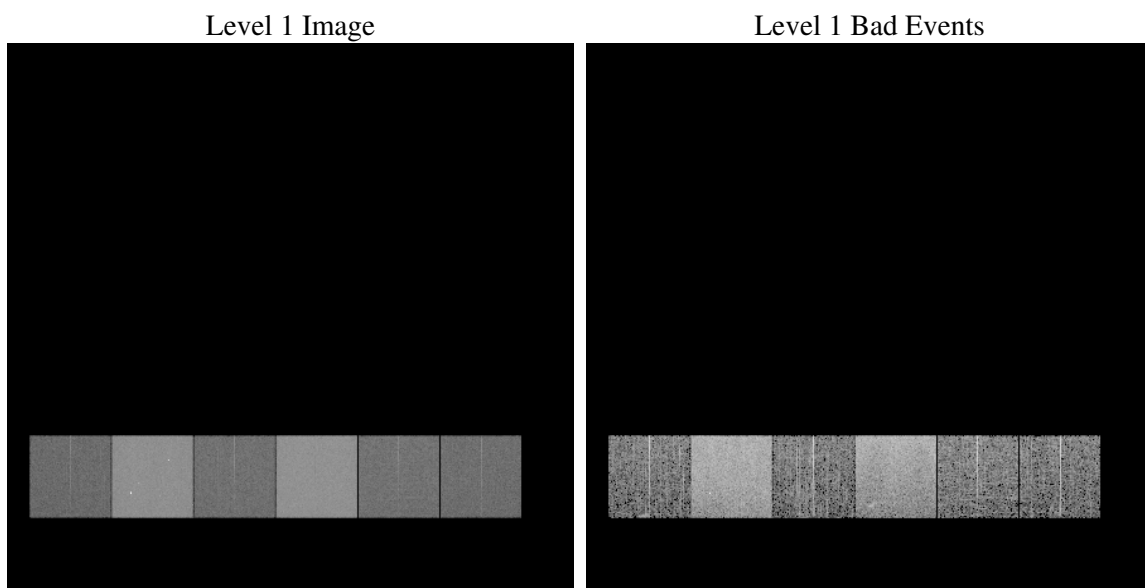
1 Front

seq_num	
obs_id	61029
title	ACIS-456789 diagnostics
observer	CHANDRA engineering request/realtime commanding
object	
dtcycle	0
cycle	P
ra_targ	0.0
dec_targ	0.0
ra_nom	112.89006401343
dec_nom	45.027744878885
roll_nom	71.37419357917
revision	2
ontime	7506.7956063747
livetime	7411.7400403572
ontime4	2697.9926386774
ontime5	7791.9999709725
ontime6	2931.3055713773
ontime7	7506.7956063747
ontime8	3041.5821442604
ontime9	2872.8444290161
l2events	1184021

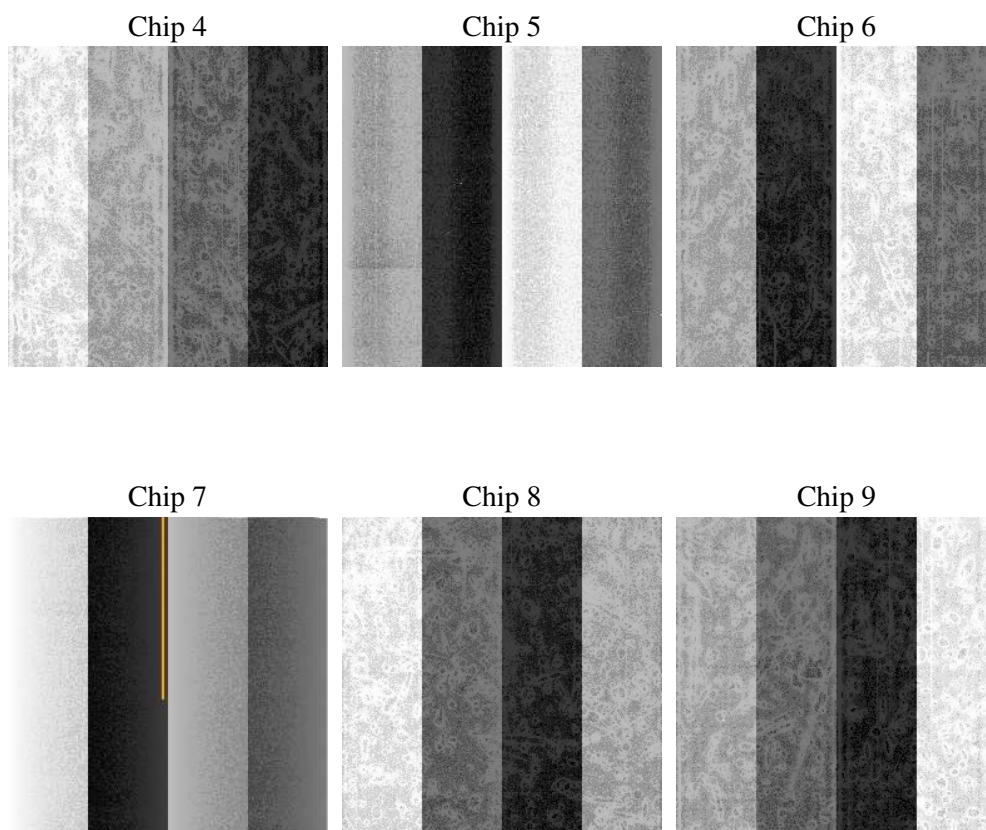
2 OBI

2.1 OBI

2.1.1 Images



2.1.2 Bias



2.1.3 Parameters

obi_num	0
ascdsver	7.6.9
caldbver	3.2.3
date	2006-10-04T20:04:49
revision	2

sched_exp_time	0.0
ontime	7509.4015675485
ontime4	2699.7834636569
ontime5	7794.6059321463
ontime6	2933.1374363601
ontime7	7509.4015675485
ontime8	3043.3319292665
ontime9	2874.7994140089
l1events	1437113

2.1.4 Events

	ccd 4	ccd 5	ccd 6	ccd 7	ccd 8	ccd 9
level 1 events	143035	388923	166344	408501	174355	155955
rejected events	21283	60590	22204	50811	23779	20937
rejected %	14%	15%	13%	12%	13%	13%

	ccd 4	ccd 5	ccd 6	ccd 7	ccd 8	ccd 9
grade 0 events	70782	42796	78703	68260	82753	74766
	49%	11%	47%	16%	47%	47%
grade 1 events	528	241	374	138	439	424
	0%	0%	0%	0%	0%	0%
grade 2 events	19535	155499	24848	105405	26083	23214
	13%	39%	14%	25%	14%	14%
grade 3 events	8046	11767	8922	27516	9857	8456
	5%	3%	5%	6%	5%	5%
grade 4 events	8042	11524	9003	27411	9657	8630
	5%	2%	5%	6%	5%	5%
grade 5 events	1383	6940	1478	6998	1788	1566
	0%	1%	0%	1%	1%	1%
grade 6 events	15472	106901	22807	129241	22373	20113
	10%	27%	13%	31%	12%	12%
grade 7 events	19247	53255	20209	43532	21405	18786
	13%	13%	12%	10%	12%	12%

2.2 Compared Parameters

Parameter	Planned	Actual	Parameter	Planned	Actual
Instrument	ACIS	ACIS	Obspar format version number	6	6
Detector	ACIS-456789	ACIS-456789	Obspar file type	PREDICTED	ACTUAL
Grating	NONE	NONE	Obspar update status	NONE	UPDATED
Data mode	FAINT	FAINT	On-chip summing requested	N	N
Observation mode	SECONDARY	SECONDARY	Subarray requested	NONE	NONE
Pointing RA	0	112.8900640134283	Alternating exposures requested	N	N
Pointing Dec	0	45.02774487888539	Primary exposure time	3.2	3.2
Pointing Roll	0.0	71.37419357917038			
SIM focus pos (mm)	-0.684267	-0.6828225247311905			
SIM defocus (mm)	0	0.8505141146731063			
SIM translation stage pos (mm)	-190.132523	250.466033080201			
SIM translation stage offset (mm)	0	-0.01005468664627074			
Observation start time	148725620.966015	148725619.94131			
Observation start date	2002-09-18T08:40:21	2002-09-18T08:40:19			
Observation end time	148755741.61726	148755740.59255			
Observation end date	2002-09-18T17:02:22	2002-09-18T17:02:20			
Read mode	TIMED	TIMED			

2.3 Aspect

2.4 Star Slots

2.5 FID Slots

A Summary

A.1 Status

V&V Scientist	Jen Lauer
V&V Date (YYYY-MM-DD)	2006.10.05
V&V Edition	1
V&V Disposition and Status	OK
V&V Charge Time	7.5067956

A.2 Comments