

# V&V Reference Report

## L2 ASCDS Version : 8.4.5

Observation 61015 - L2 Version 3  
Chandra X-Ray Center

L2 Processing Date : Oct 15 2012

## Contents

<b>1</b>	<b>Front</b>	<b>2</b>
<b>2</b>	<b>OBI</b>	<b>3</b>
2.1	OBI . . . . .	3
2.1.1	Images . . . . .	3
2.1.2	Bias . . . . .	3
2.1.3	Parameters . . . . .	4
2.1.4	Events . . . . .	4
2.2	Compared Parameters . . . . .	5
2.3	Star Slots . . . . .	6
2.4	FID Slots . . . . .	6
<b>A</b>	<b>Summary</b>	<b>7</b>
A.1	Status . . . . .	7
A.2	Comments . . . . .	7

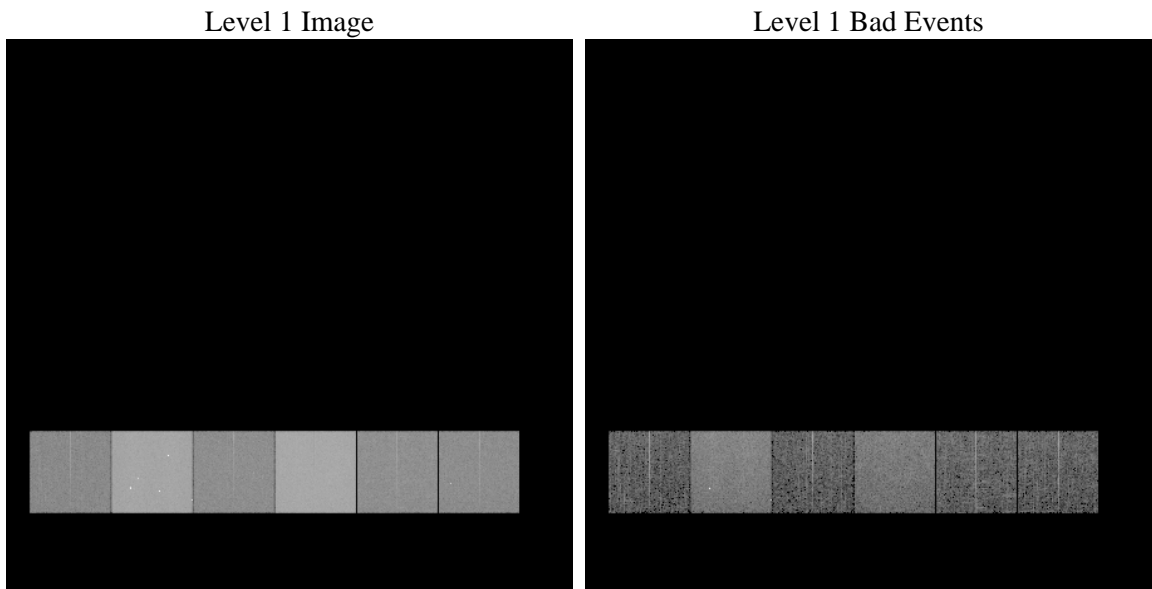
# 1 Front

seq_num	&#160	Sequence number
obs_id	61015	Observation id
title	ACIS-456789 diagnostics	Proposal title
observer	CHANDRA engineering request/realtime commanding	Principal investig
object	&#160	Source name
dtcycle	0	&#160
cycle	P	events from which exps? Prim/Second/Both
ra_targ	0.0	Observer's specified target RA [deg]
dec_targ	0.0	Observer's specified target Dec [deg]
ra_nom	285.02967718484	Nominal RA [deg]
dec_nom	-50.021335429112	Nominal Dec [deg]
roll_nom	278.9273605106	Nominal Roll [deg]
revision	3	Processing version of data
ontime	8393.5590084493	Sum of GTIs [s]
livetime	8287.2747102899	Livetime [s]
ontime4	2909.8181058168	Sum of GTIs [s]
ontime5	8396.7999687195	Sum of GTIs [s]
ontime6	3237.1620286703	Sum of GTIs [s]
ontime7	8393.5590084493	Sum of GTIs [s]
ontime8	3285.7770207524	Sum of GTIs [s]
ontime9	3187.4564325511	Sum of GTIs [s]
l2events	1279130	Number of level 2 events

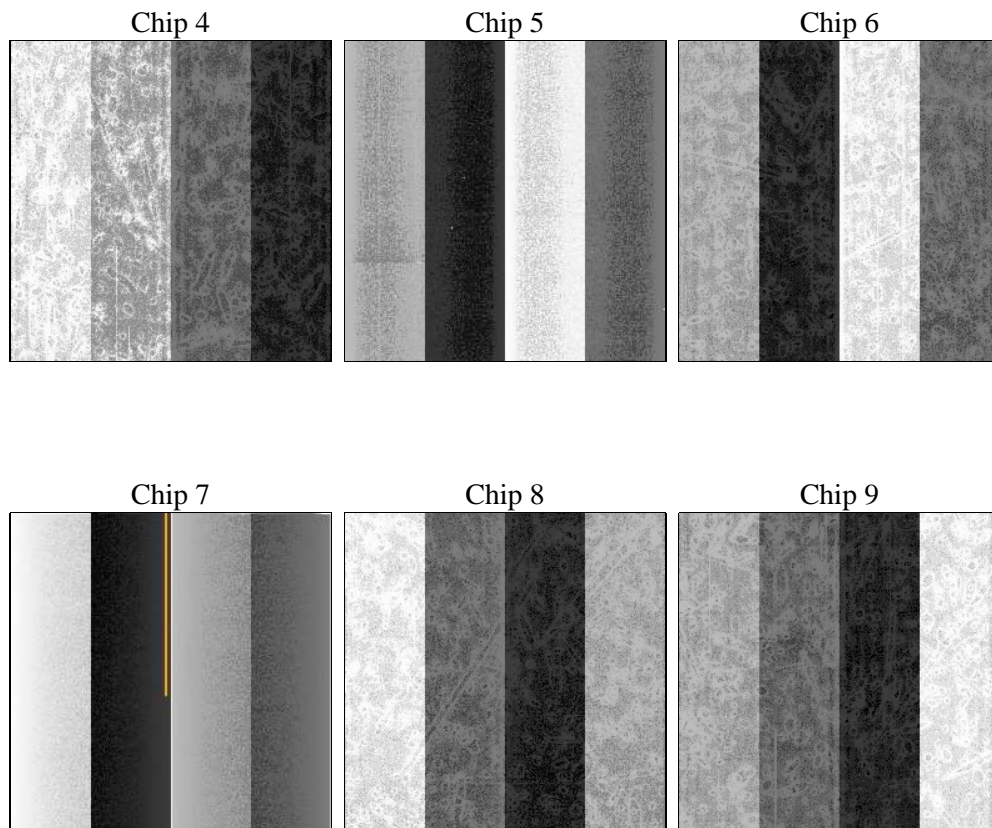
## 2 OBI

### 2.1 OBI

#### 2.1.1 Images



#### 2.1.2 Bias



### 2.1.3 Parameters

obi_num	0	Obi number	sched_exp_time	0.0	[s] Scheduled observation exposure time
ascdsver	8.4.5	Processing system revision	ontime	8393.5590084493	Sum of GTIs [s]
caldbver	4.5.2	&#160	ontime4	2909.8181058168	Sum of GTIs [s]
date	2012-10-15T03:03:21	Date and time of file creation	ontime5	8396.7999687195	Sum of GTIs [s]
revision	3	Processing version of data	ontime6	3237.1620286703	Sum of GTIs [s]
			ontime7	8393.5590084493	Sum of GTIs [s]
			ontime8	3285.7770207524	Sum of GTIs [s]
			ontime9	3187.4564325511	Sum of GTIs [s]
			l1events	1553825	Number of level 1 events

### 2.1.4 Events

	ccd 4	ccd 5	ccd 6	ccd 7	ccd 8	ccd 9		ccd 4	ccd 5	ccd 6	ccd 7	ccd 8	ccd 9
level 1 events	151564	418318	178381	447421	186766	171375	grade 0 events	75822	74362	85411	99165	88785	82793
rejected events	23816	65911	23817	48281	27795	24463		50%	17%	47%	22%	47%	48%
rejected %	15%	15%	13%	10%	14%	14%	grade 1 events	535	687	415	267	443	487
								0%	0%	0%	0%	0%	0%
							grade 2 events	19254	140756	26629	88931	27450	24588
								12%	33%	14%	19%	14%	14%
							grade 3 events	8606	18336	9435	40215	10181	9397
								5%	4%	5%	8%	5%	5%
							grade 4 events	8562	17964	9481	39509	10201	9392
								5%	4%	5%	8%	5%	5%
							grade 5 events	1462	10469	1676	8811	1848	1740
								0%	2%	0%	1%	0%	1%
							grade 6 events	16348	103785	24852	134586	23801	21960
								10%	24%	13%	30%	12%	12%
							grade 7 events	20975	51959	20482	35937	24057	21018
								13%	12%	11%	8%	12%	12%

## 2.2 Compared Parameters

Parameter	Planned	Actual	Parameter	Planned	Actual
Instrument	ACIS	ACIS	Obspar format version number	7	7
Detector	ACIS-456789	ACIS-456789	Obspar file type	PREDICTED	ACTUAL
Grating	NONE	NONE	Obspar update status	NONE	UPDATED
Data mode	FAINT	FAINT	On-chip summing requested	N	N
Observation mode	SECONDARY	SECONDARY	Subarray requested	NONE	NONE
[deg] Pointing RA	0	285.0296771848449	Alternating exposures requested	N	N
[deg] Pointing Dec	0	-50.02133542911248	[s] Primary exposure time	0.000000	3.2
[deg] Pointing Roll	0.0	278.9273605106019			
[mm] SIM focus pos	-0.684267	-0.6828225247311905			
[mm] SIM defocus	0	0.8505141146731063			
[mm] SIM translation stage pos	-190.132523	250.466033080201			
[mm] SIM translation stage offset	0	-0.01005468664627074			
[s] Observation start time (MET)	149669172.455081	149669171.43036			
Observation start date	2002-09-29T06:46:12	2002-09-29T06:46:11			
[s] Observation end time (MET)	149691843.406021	149691842.3813			
Observation end date	2002-09-29T13:04:03	2002-09-29T13:04:02			
Read mode	TIMED	TIMED			

## 2.3 Star Slots

## 2.4 FID Slots

## A Summary

### A.1 Status

V&V Scientist	Jen Lauer
V&V Date (YYYY-MM-DD)	2012.10.24
V&V Edition	1
V&V Disposition and Status	OK
V&V Charge Time	8.3935590084493

### A.2 Comments