

# V&V Reference Report

## L2 ASCDS Version : 7.6.9

Observation 61007 - L2 Version 001  
Chandra X-Ray Center

L2 Processing Date : Oct 5 2006

## Contents

<b>1</b>	<b>Front</b>	<b>2</b>
<b>2</b>	<b>OBI</b>	<b>3</b>
2.1	OBI . . . . .	3
2.1.1	Images . . . . .	3
2.1.2	Bias . . . . .	3
2.1.3	Parameters . . . . .	4
2.1.4	Events . . . . .	4
2.2	Compared Parameters . . . . .	5
2.3	Aspect . . . . .	6
2.4	Star Slots . . . . .	8
2.5	FID Slots . . . . .	8
<b>A</b>	<b>Summary</b>	<b>9</b>
A.1	Status . . . . .	9
A.2	Comments . . . . .	9

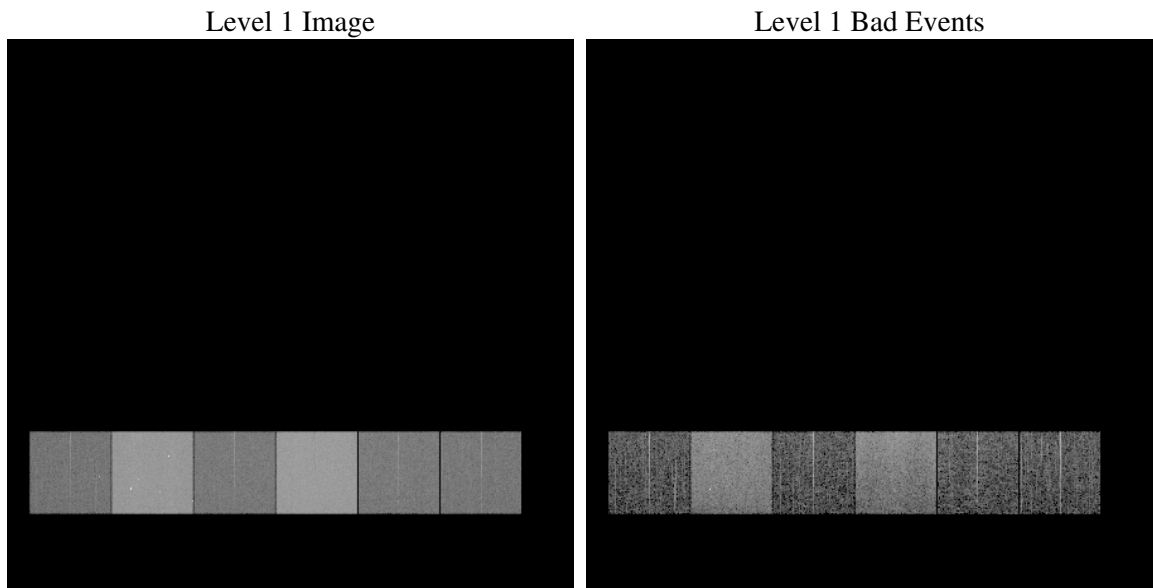
# 1 Front

seq_num	&#160
obs_id	61007
title	ACIS-456789 diagnostics
observer	CHANDRA engineering request/realtime commanding
object	&#160
dtcycle	0
cycle	P
ra_targ	0.0
dec_targ	0.0
ra_nom	341.27136257256
dec_nom	26.605857711216
roll_nom	239.61593556103
revision	2
ontime	7759.6312586069
livetime	7661.3741353214
ontime4	2753.5527579486
ontime5	7788.7999709845
ontime6	3014.8356460035
ontime7	7759.6312586069
ontime8	3009.6348413527
ontime9	2892.7530183494
l2events	1175490

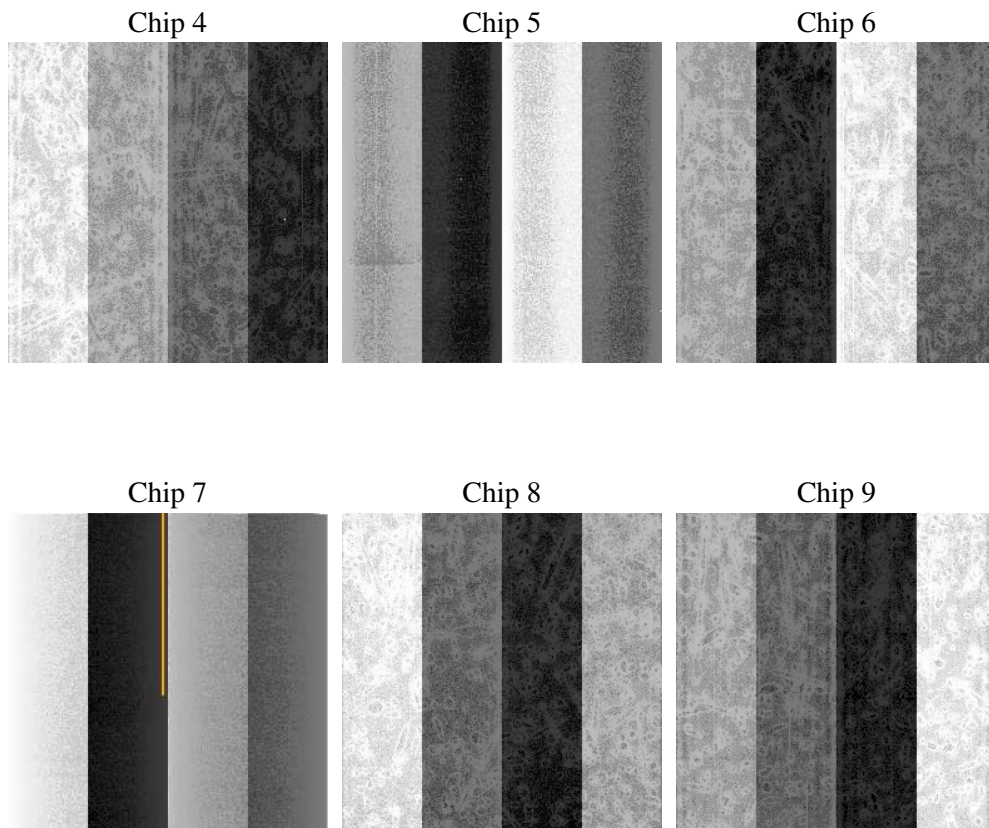
## 2 OBI

### 2.1 OBI

#### 2.1.1 Images



#### 2.1.2 Bias



### 2.1.3 Parameters

obi_num	0
ascdsver	7.6.9
caldsver	3.2.3
date	2006-10-06T01:32:04
revision	2

sched_exp_time	0.0
ontime	7762.1995702088
ontime4	2754.8806349933
ontime5	7791.3682825863
ontime6	3017.4039576054
ontime7	7762.1995702088
ontime8	3010.9216784239
ontime9	2894.2450554073
l1events	1433879

### 2.1.4 Events

	ccd 4	ccd 5	ccd 6	ccd 7	ccd 8	ccd 9
level 1 events	143910	383199	166150	415390	168821	156409
rejected events	21620	62330	21569	54400	23426	22531
rejected %	15%	16%	12%	13%	13%	14%

	ccd 4	ccd 5	ccd 6	ccd 7	ccd 8	ccd 9
grade 0 events	71220	39961	79039	66984	79884	74298
	49%	10%	47%	16%	47%	47%
grade 1 events	504	128	383	156	436	447
	0%	0%	0%	0%	0%	0%
grade 2 events	19549	152777	25203	107849	25555	22601
	13%	39%	15%	25%	15%	14%
grade 3 events	8116	10836	9091	27295	9204	8646
	5%	2%	5%	6%	5%	5%
grade 4 events	7974	10707	8881	27036	9358	8516
	5%	2%	5%	6%	5%	5%
grade 5 events	1406	6965	1649	7256	1733	1564
	0%	1%	0%	1%	1%	0%
grade 6 events	15483	106588	22367	131826	21394	19817
	10%	27%	13%	31%	12%	12%
grade 7 events	19658	55237	19537	46988	21257	20520
	13%	14%	11%	11%	12%	13%

## 2.2 Compared Parameters

Parameter	Planned	Actual	Parameter	Planned	Actual
Instrument	ACIS	ACIS	Obspar format version number	6	6
Detector	ACIS-456789	ACIS-456789	Obspar file type	PREDICTED	ACTUAL
Grating	NONE	NONE	Obspar update status	NONE	UPDATED
Data mode	FAINT	FAINT	On-chip summing requested	N	N
Observation mode	SECONDARY	SECONDARY	Subarray requested	NONE	NONE
Pointing RA	0	341.2713625725618	Alternating exposures requested	N	N
Pointing Dec	0	26.60585771121611	Primary exposure time	0.000000	3.2
Pointing Roll	0.0	239.6159355610318			
SIM focus pos (mm)	-0.684267	-1.428180813131781			
SIM defocus (mm)	0	0.1051558262725154			
SIM translation stage pos (mm)	-190.132523	250.466033080201			
SIM translation stage offset (mm)	0	-0.01005468664627074			
Observation start time	150317261.531913	150317260.5072			
Observation start date	2002-10-06T18:47:42	2002-10-06T18:47:40			
Observation end time	150355293.133488	150355292.10877			
Observation end date	2002-10-07T05:21:33	2002-10-07T05:21:32			
Read mode	TIMED	TIMED			

## 2.3 Aspect



## **2.4 Star Slots**

## **2.5 FID Slots**



## A Summary

### A.1 Status

V&V Scientist	Jen Lauer
V&V Date (YYYY-MM-DD)	2006.10.06
V&V Edition	1
V&V Disposition and Status	OK
V&V Charge Time	7.75963125

### A.2 Comments