

# V&V Reference Report

## L2 ASCDS Version : 7.6.9

Observation 60998 - L2 Version 001  
Chandra X-Ray Center

L2 Processing Date : Oct 7 2006

## Contents

<b>1</b>	<b>Front</b>	<b>2</b>
<b>2</b>	<b>OBI</b>	<b>3</b>
2.1	OBI . . . . .	3
2.1.1	Images . . . . .	3
2.1.2	Bias . . . . .	3
2.1.3	Parameters . . . . .	4
2.1.4	Events . . . . .	4
2.2	Compared Parameters . . . . .	5
2.3	Aspect . . . . .	6
2.4	Star Slots . . . . .	8
2.5	FID Slots . . . . .	8
<b>A</b>	<b>Summary</b>	<b>9</b>
A.1	Status . . . . .	9
A.2	Comments . . . . .	9

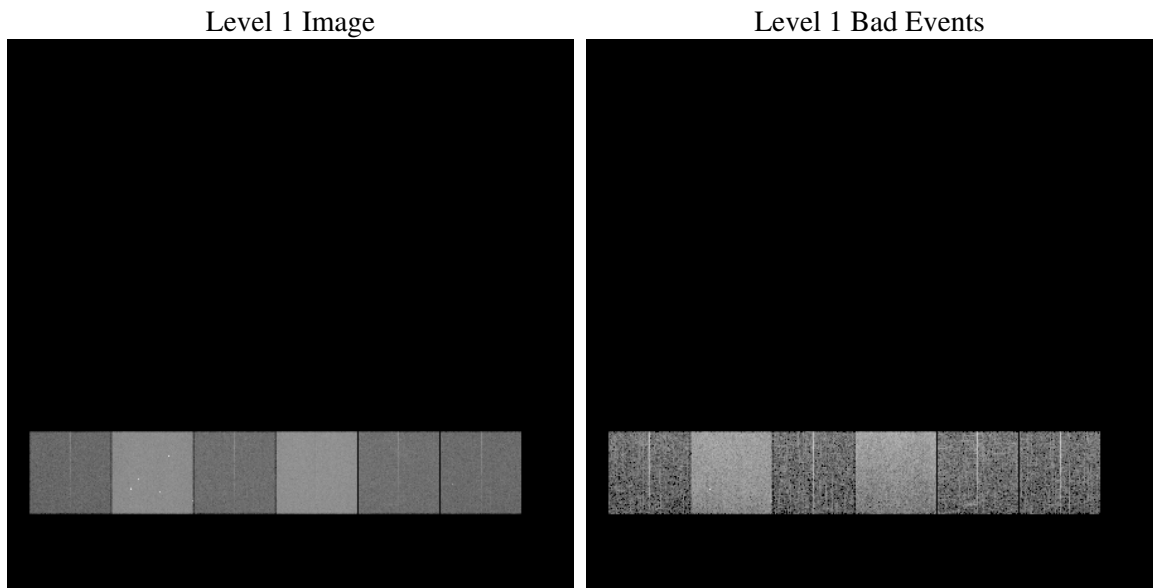
# 1 Front

seq_num	&#160
obs_id	60998
title	ACIS-456789 diagnostics
observer	CHANDRA engineering request/realtime commanding
object	&#160
dtcycle	0
cycle	P
ra_targ	0.0
dec_targ	0.0
ra_nom	110.07422215986
dec_nom	58.525234748597
roll_nom	85.263295822278
revision	2
ontime	7790.844181329
livetime	7692.1918212219
ontime4	2666.9664833844
ontime5	7790.8852213323
ontime6	3003.9926266074
ontime7	7790.844181329
ontime8	3078.6186561286
ontime9	2867.7462550402
l2events	1170274

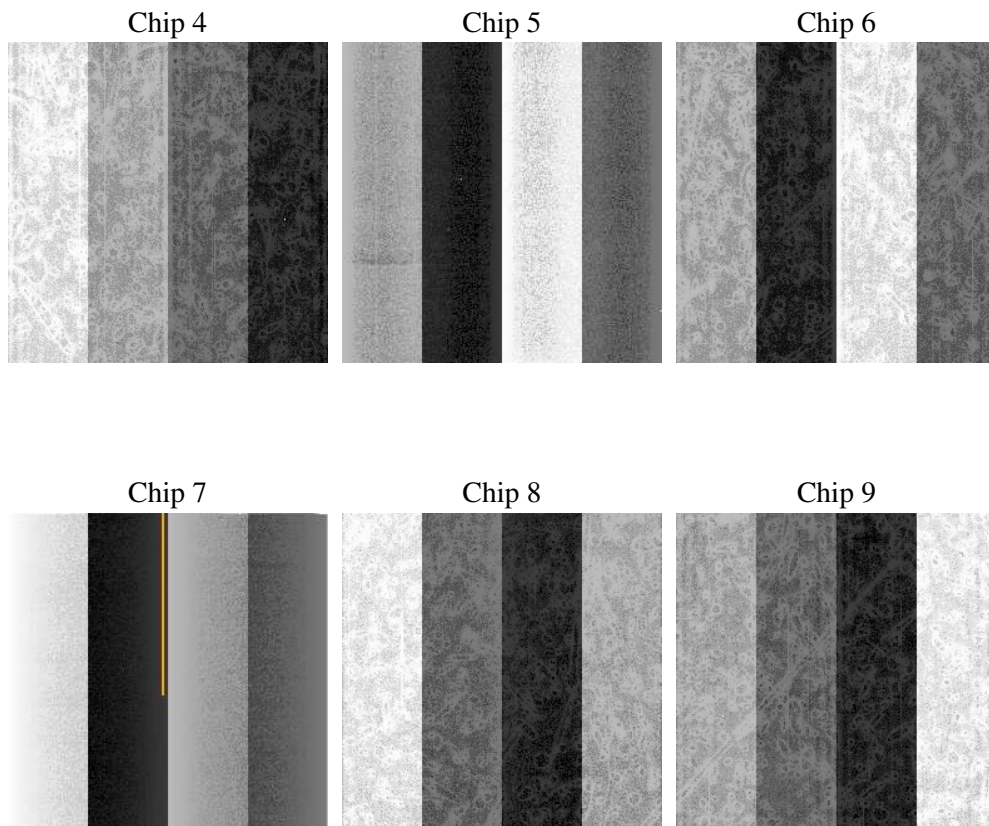
## 2 OBI

### 2.1 OBI

#### 2.1.1 Images



#### 2.1.2 Bias



### 2.1.3 Parameters

obi_num	0
ascdsver	7.6.9
caldbver	3.2.3
date	2006-10-07T14:42:42
revision	2

sched_exp_time	0.0
ontime	7791.3738829792
ontime4	2667.3730650246
ontime5	7791.3738829792
ontime6	3004.440248251
ontime7	7791.3738829792
ontime8	3078.9841977954
ontime9	2868.3169966936
l1events	1431543

### 2.1.4 Events

	ccd 4	ccd 5	ccd 6	ccd 7	ccd 8	ccd 9
level 1 events	139074	383943	165693	416550	172565	153718
rejected events	21211	62129	22400	54746	24727	21878
rejected %	15%	16%	13%	13%	14%	14%

	ccd 4	ccd 5	ccd 6	ccd 7	ccd 8	ccd 9
grade 0 events	68173	43630	78281	66787	81552	72943
	49%	11%	47%	16%	47%	47%
grade 1 events	528	360	410	154	416	403
	0%	0%	0%	0%	0%	0%
grade 2 events	18959	150650	25019	107919	25803	22548
	13%	39%	15%	25%	14%	14%
grade 3 events	7834	11065	8925	27323	9472	8383
	5%	2%	5%	6%	5%	5%
grade 4 events	7835	11171	8756	26771	9349	8352
	5%	2%	5%	6%	5%	5%
grade 5 events	1410	7002	1589	7225	1825	1573
	1%	1%	0%	1%	1%	1%
grade 6 events	15062	105298	22312	133004	21662	19614
	10%	27%	13%	31%	12%	12%
grade 7 events	19273	54767	20401	47367	22486	19902
	13%	14%	12%	11%	13%	12%

## 2.2 Compared Parameters

Parameter	Planned	Actual	Parameter	Planned	Actual
Instrument	ACIS	ACIS	Obspar format version number	6	6
Detector	ACIS-456789	ACIS-456789	Obspar file type	PREDICTED	ACTUAL
Grating	NONE	NONE	Obspar update status	NONE	UPDATED
Data mode	FAINT	FAINT	On-chip summing requested	N	N
Observation mode	SECONDARY	SECONDARY	Subarray requested	NONE	NONE
Pointing RA	0	110.0742221598631	Alternating exposures requested	N	N
Pointing Dec	0	58.52523474859674	Primary exposure time	3.2	3.2
Pointing Roll	0.0	85.26329582227849			
SIM focus pos (mm)	-0.684267	-0.7809083437167272			
SIM defocus (mm)	0	0.7524282956875696			
SIM translation stage pos (mm)	-190.132523	250.4635187648994			
SIM translation stage offset (mm)	0	-0.007540371344731511			
Observation start time	151003289.960334	151003288.93563			
Observation start date	2002-10-14T17:21:30	2002-10-14T17:21:28			
Observation end time	151030835.811482	151030834.78677			
Observation end date	2002-10-15T01:00:36	2002-10-15T01:00:34			
Read mode	TIMED	TIMED			

## 2.3 Aspect



## **2.4 Star Slots**

## **2.5 FID Slots**



## A Summary

### A.1 Status

V&V Scientist	Jen Lauer
V&V Date (YYYY-MM-DD)	2006.10.08
V&V Edition	1
V&V Disposition and Status	OK
V&V Charge Time	7.79084418

### A.2 Comments