

# V&V Reference Report

## L2 ASCDS Version : 7.6.9

Observation 60988 - L2 Version 001  
Chandra X-Ray Center

L2 Processing Date : Oct 7 2006

## Contents

<b>1</b>	<b>Front</b>	<b>2</b>
<b>2</b>	<b>OBI</b>	<b>3</b>
2.1	OBI . . . . .	3
2.1.1	Images . . . . .	3
2.1.2	Bias . . . . .	3
2.1.3	Parameters . . . . .	4
2.1.4	Events . . . . .	4
2.2	Compared Parameters . . . . .	5
2.3	Aspect . . . . .	6
2.4	Star Slots . . . . .	8
2.5	FID Slots . . . . .	8
<b>A</b>	<b>Summary</b>	<b>9</b>
A.1	Status . . . . .	9
A.2	Comments . . . . .	9

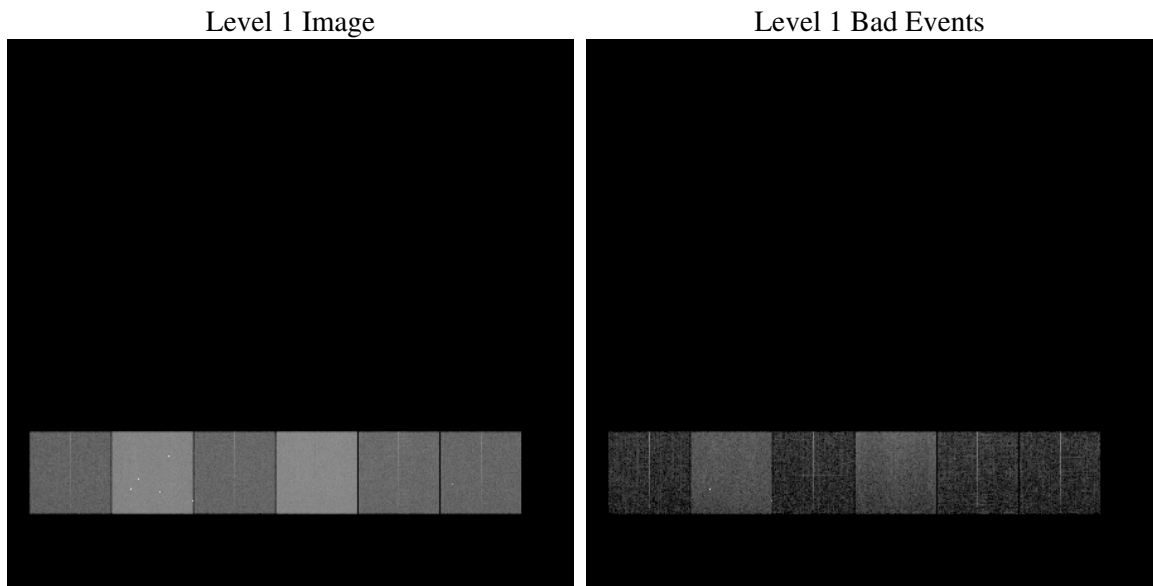
# 1 Front

seq_num	&#160
obs_id	60988
title	ACIS-456789 diagnostics
observer	CHANDRA engineering request/realtime commanding
object	&#160
dtcycle	0
cycle	P
ra_targ	0.0
dec_targ	0.0
ra_nom	123.88629733958
dec_nom	46.327007043608
roll_nom	76.467048838917
revision	2
ontime	8387.0770678818
livetime	8280.8748479568
ontime4	2990.8441862762
ontime5	8396.7999687195
ontime6	3198.7414784431
ontime7	8387.0770678818
ontime8	3370.0443208218
ontime9	3201.8593187332
l2events	1260965

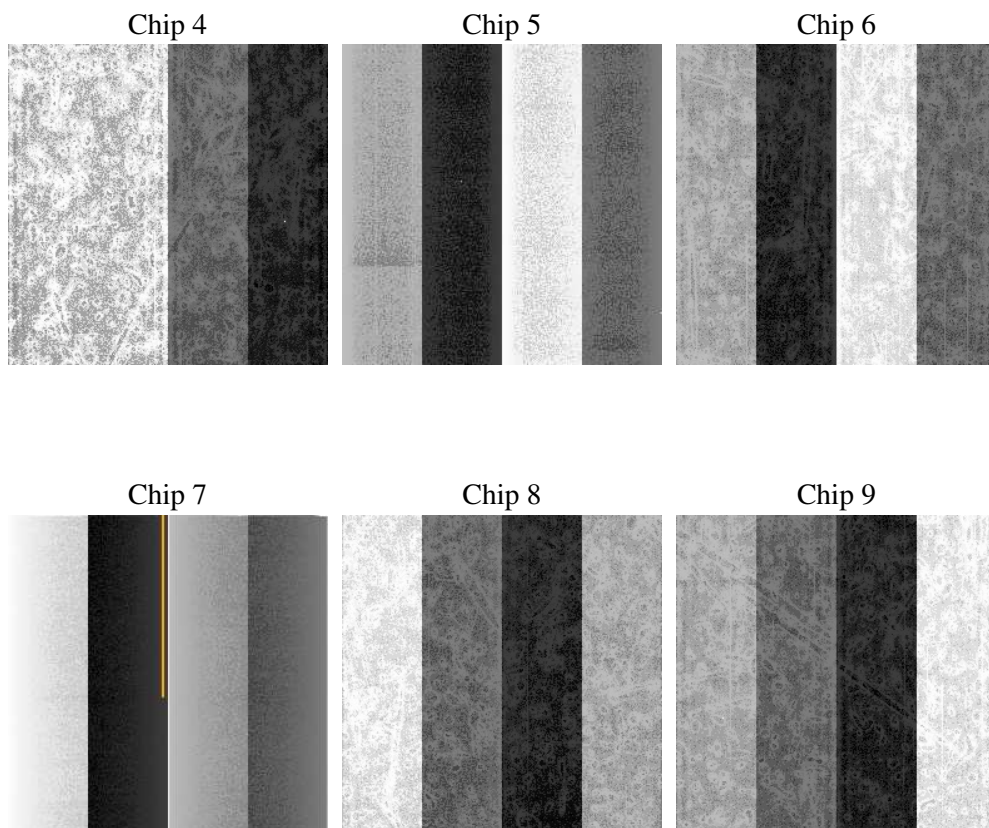
## 2 OBI

### 2.1 OBI

#### 2.1.1 Images



#### 2.1.2 Bias



### 2.1.3 Parameters

obi_num	0
ascdsver	7.6.9
caldsver	3.2.3
date	2006-10-07T15:29:21
revision	2

sched_exp_time	0.0
ontime	8452.528870374
ontime4	3014.1632161438
ontime5	8462.2517712116
ontime6	3224.8304172456
ontime7	8452.528870374
ontime8	3396.6043907404
ontime9	3228.0713974535
l1events	1554036

### 2.1.4 Events

	ccd 4	ccd 5	ccd 6	ccd 7	ccd 8	ccd 9
level 1 events	156720	415903	177043	444264	188922	171184
rejected events	24092	70471	24006	61084	27294	23938
rejected %	15%	16%	13%	13%	14%	13%

	ccd 4	ccd 5	ccd 6	ccd 7	ccd 8	ccd 9
grade 0 events	77708	45024	84191	68819	89633	82405
	49%	10%	47%	15%	47%	48%
grade 1 events	602	299	370	157	451	443
	0%	0%	0%	0%	0%	0%
grade 2 events	21358	164856	26367	117668	28074	25216
	13%	39%	14%	26%	14%	14%
grade 3 events	8842	11373	9594	27932	10421	9303
	5%	2%	5%	6%	5%	5%
grade 4 events	8678	10999	9597	27900	10487	9330
	5%	2%	5%	6%	5%	5%
grade 5 events	1551	8462	1613	7721	1893	1719
	0%	2%	0%	1%	1%	1%
grade 6 events	17062	115864	24525	143806	24219	22172
	10%	27%	13%	32%	12%	12%
grade 7 events	20919	59026	20786	50261	23744	20596
	13%	14%	11%	11%	12%	12%

## 2.2 Compared Parameters

Parameter	Planned	Actual	Parameter	Planned	Actual
Instrument	ACIS	ACIS	Obspar format version number	6	6
Detector	ACIS-456789	ACIS-456789	Obspar file type	PREDICTED	ACTUAL
Grating	NONE	NONE	Obspar update status	NONE	UPDATED
Data mode	FAINT	FAINT	On-chip summing requested	N	N
Observation mode	SECONDARY	SECONDARY	Subarray requested	NONE	NONE
Pointing RA	0	123.8862973395828	Alternating exposures requested	N	N
Pointing Dec	0	46.32700704360808	Primary exposure time	0.000000	3.2
Pointing Roll	0.0	76.46704883891661			
SIM focus pos (mm)	-0.684267	-0.7809083437167272			
SIM defocus (mm)	0	0.7524282956875696			
SIM translation stage pos (mm)	-190.132523	250.466033080201			
SIM translation stage offset (mm)	0	-0.01005468664627074			
Observation start time	151495134.180753	151495133.15604			
Observation start date	2002-10-20T09:58:54	2002-10-20T09:58:53			
Observation end time	151517350.031675	151517349.00696			
Observation end date	2002-10-20T16:09:10	2002-10-20T16:09:09			
Read mode	TIMED	TIMED			

## 2.3 Aspect



## 2.4 Star Slots

## 2.5 FID Slots



## A Summary

### A.1 Status

V&V Scientist	Jen Lauer
V&V Date (YYYY-MM-DD)	2006.10.08
V&V Edition	1
V&V Disposition and Status	OK
V&V Charge Time	8.38707706

### A.2 Comments