

V&V Reference Report

L2 ASCDS Version : 7.6.9

Observation 60977 - L2 Version 001
Chandra X-Ray Center

L2 Processing Date : Oct 12 2006

Contents

1	Front	2
2	OBI	3
2.1	OBI	3
2.1.1	Images	3
2.1.2	Bias	3
2.1.3	Parameters	4
2.1.4	Events	4
2.2	Compared Parameters	5
2.3	Aspect	6
2.4	Star Slots	8
2.5	FID Slots	8
A	Summary	9
A.1	Status	9
A.2	Comments	9

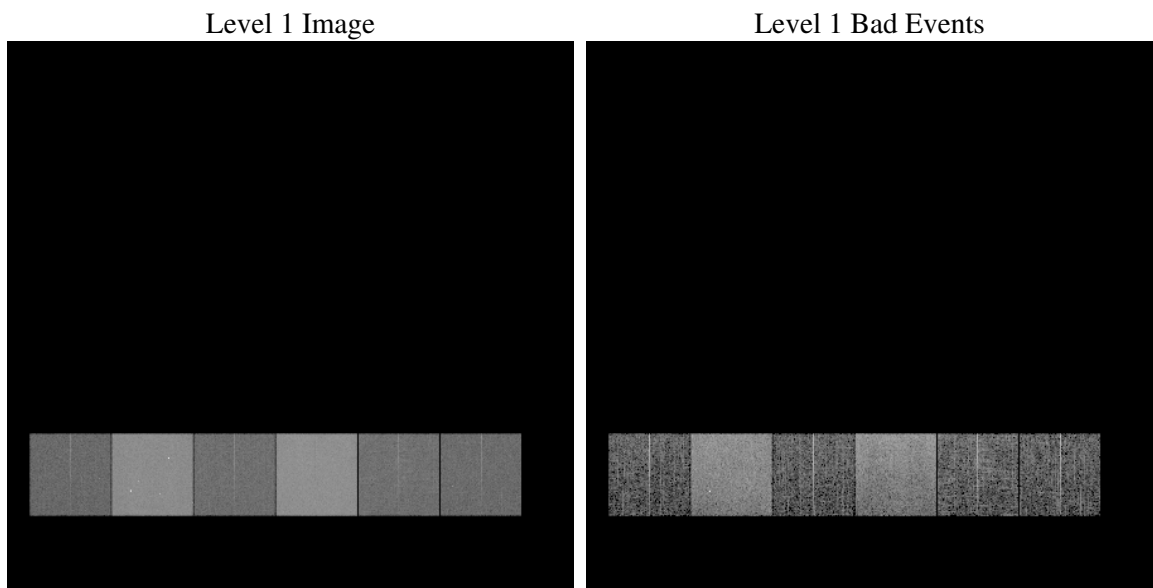
1 Front

seq_num	
obs_id	60977
title	ACIS-456789 diagnostics
observer	CHANDRA engineering request/realtime commanding
object	
dtcycle	0
cycle	P
ra_targ	0.0
dec_targ	0.0
ra_nom	162.19116950661
dec_nom	-3.1727823959985
roll_nom	75.095029718201
revision	2
ontime	7794.1348317564
livetime	7695.4408034521
ontime4	2812.8761331141
ontime5	7794.1758717597
ontime6	3068.8763256669
ontime7	7794.1348317564
ontime8	3162.9475384653
ontime9	2916.4245152771
l2events	1170731

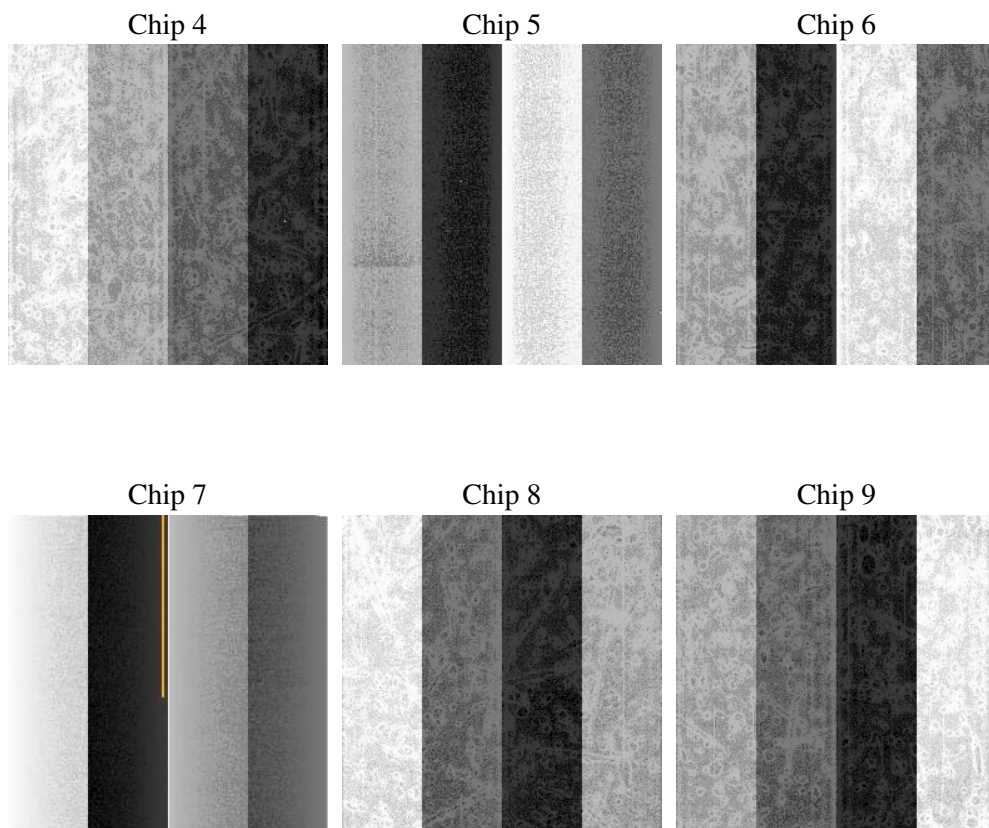
2 OBI

2.1 OBI

2.1.1 Images



2.1.2 Bias



2.1.3 Parameters

obi_num	1
ascdsver	7.6.9
caldsver	3.2.3
date	2006-10-12T04:44:44
revision	2

sched_exp_time	0.0
ontime	7794.6008738577
ontime4	2813.2190552056
ontime5	7794.6008738577
ontime6	3069.2602877617
ontime7	7794.6008738577
ontime8	3163.2494205832
ontime9	2916.9315973818
l1events	1430117

2.1.4 Events

	ccd 4	ccd 5	ccd 6	ccd 7	ccd 8	ccd 9
level 1 events	144487	376078	168882	410451	175483	154736
rejected events	21080	60854	22591	54717	25030	21711
rejected %	14%	16%	13%	13%	14%	14%

	ccd 4	ccd 5	ccd 6	ccd 7	ccd 8	ccd 9
grade 0 events	71130	39198	79760	64909	83016	73321
	49%	10%	47%	15%	47%	47%
grade 1 events	479	117	377	161	441	422
	0%	0%	0%	0%	0%	0%
grade 2 events	19793	150083	25365	107148	26044	22890
	13%	39%	15%	26%	14%	14%
grade 3 events	8205	10537	9004	26332	9603	8456
	5%	2%	5%	6%	5%	5%
grade 4 events	8395	10377	9080	26043	9691	8525
	5%	2%	5%	6%	5%	5%
grade 5 events	1360	6704	1594	7157	1822	1578
	0%	1%	0%	1%	1%	1%
grade 6 events	15884	105029	23082	131302	22099	19833
	10%	27%	13%	31%	12%	12%
grade 7 events	19241	54033	20620	47399	22767	19711
	13%	14%	12%	11%	12%	12%

2.2 Compared Parameters

Parameter	Planned	Actual	Parameter	Planned	Actual
Instrument	ACIS	ACIS	Obspar format version number	6	6
Detector	ACIS-456789	ACIS-456789	Obspar file type	PREDICTED	ACTUAL
Grating	NONE	NONE	Obspar update status	NONE	UPDATED
Data mode	FAINT	FAINT	On-chip summing requested	N	N
Observation mode	SECONDARY	SECONDARY	Subarray requested	NONE	NONE
Pointing RA	0	162.1911695066073	Alternating exposures requested	N	N
Pointing Dec	0	-3.172782395998494	Primary exposure time	0.000000	3.2
Pointing Roll	0.0	75.09502971820055			
SIM focus pos (mm)	-0.684267	-0.7809083437167272			
SIM defocus (mm)	0	0.7524282956875696			
SIM translation stage pos (mm)	-190.132523	250.466033080201			
SIM translation stage offset (mm)	0	-0.01005468664627074			
Observation start time	152375683.017335	152375681.99262			
Observation start date	2002-10-30T14:34:43	2002-10-30T14:34:41			
Observation end time	152386646.417791	152386645.39307			
Observation end date	2002-10-30T17:37:26	2002-10-30T17:37:25			
Read mode	TIMED	TIMED			

2.3 Aspect

2.4 Star Slots

2.5 FID Slots

A Summary

A.1 Status

V&V Scientist	Jen Lauer
V&V Date (YYYY-MM-DD)	2006.10.12
V&V Edition	1
V&V Disposition and Status	OK
V&V Charge Time	7.79413483

A.2 Comments