

V&V Reference Report

L2 ASCDS Version : 7.6.9

Observation 60970 - L2 Version 001
Chandra X-Ray Center

L2 Processing Date : Oct 12 2006

Contents

1	Front	2
2	OBI	3
2.1	OBI	3
2.1.1	Images	3
2.1.2	Bias	3
2.1.3	Parameters	4
2.1.4	Events	4
2.2	Compared Parameters	5
2.3	Aspect	6
2.4	Star Slots	8
2.5	FID Slots	8
A	Summary	9
A.1	Status	9
A.2	Comments	9

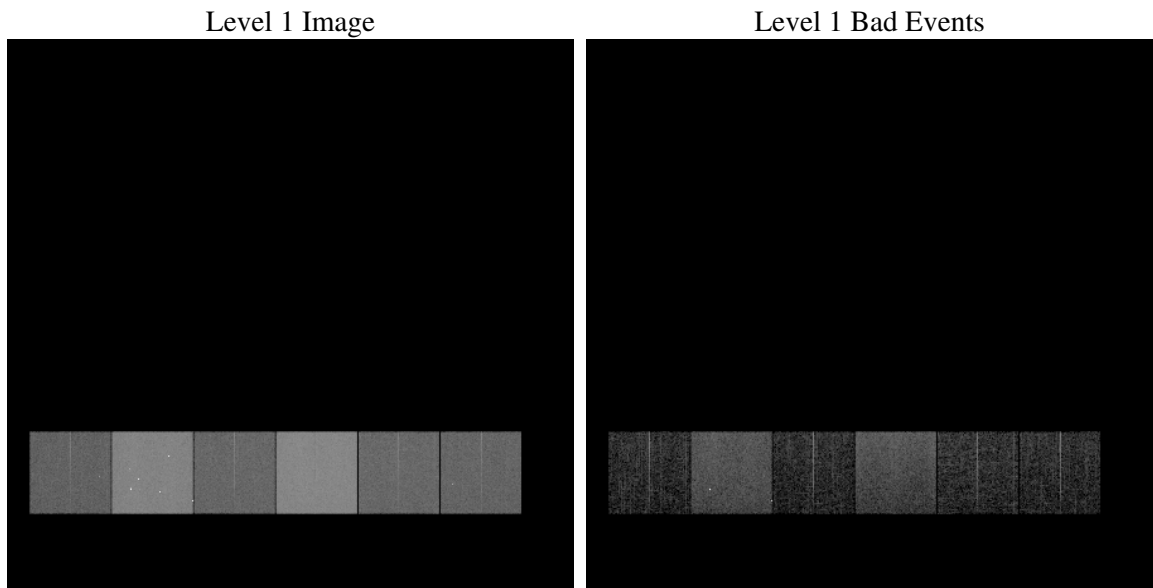
1 Front

seq_num	
obs_id	60970
title	ACIS-456789 diagnostics
observer	CHANDRA engineering request/realtime commanding
object	
dtcycle	0
cycle	P
ra_targ	0.0
dec_targ	0.0
ra_nom	99.954974679305
dec_nom	60.017666712604
roll_nom	109.02253168165
revision	2
ontime	8463.9999684691
livetime	8356.8237044595
ontime4	3087.2075357437
ontime5	8463.9999684691
ontime6	3441.6184273362
ontime7	8463.9999684691
ontime8	3482.6128706336
ontime9	3328.0593461692
l2events	1265804

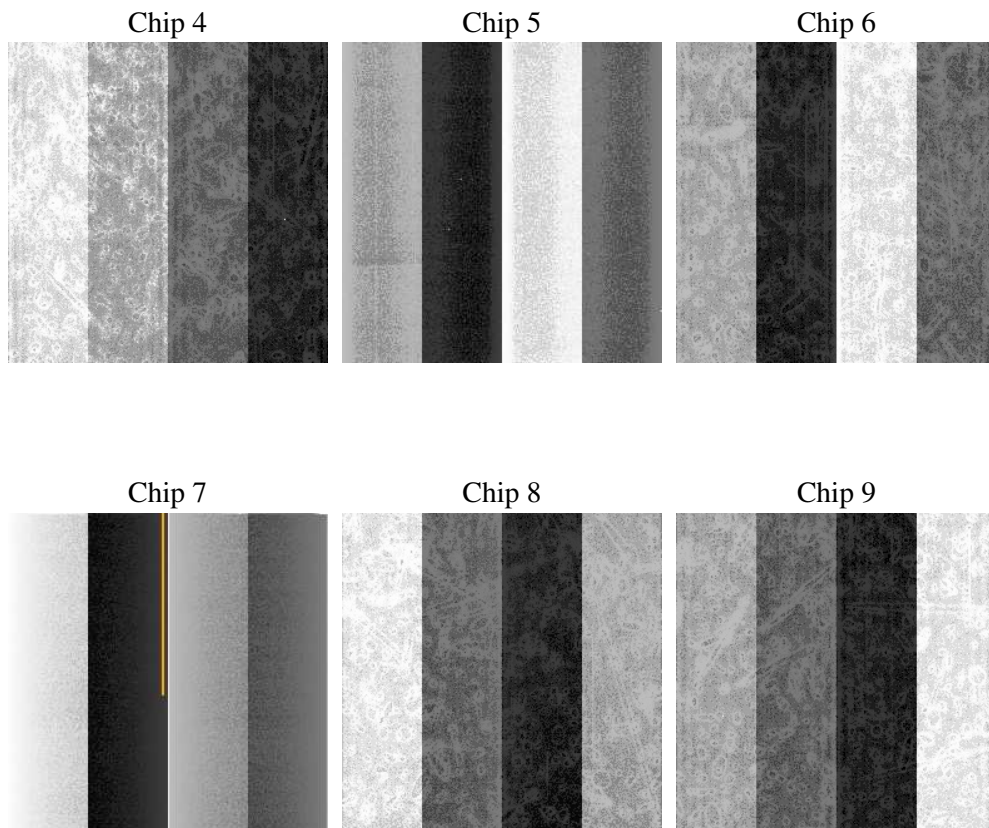
2 OBI

2.1 OBI

2.1.1 Images



2.1.2 Bias



2.1.3 Parameters

obi_num	0
ascdsver	7.6.9
caldbver	3.2.3
date	2006-10-12T05:32:37
revision	2

sched_exp_time	0.0
ontime	8465.4990119636
ontime4	3088.7065792382
ontime5	8465.4990119636
ontime6	3441.9787524641
ontime7	8465.4990119636
ontime8	3484.1119141281
ontime9	3328.542791307
l1events	1549312

2.1.4 Events

	ccd 4	ccd 5	ccd 6	ccd 7	ccd 8	ccd 9
level 1 events	157278	408647	183585	437269	189705	172828
rejected events	23214	67342	22466	57313	25385	22538
rejected %	14%	16%	12%	13%	13%	13%

	ccd 4	ccd 5	ccd 6	ccd 7	ccd 8	ccd 9
grade 0 events	78289	41374	87928	67857	90878	83231
	49%	10%	47%	15%	47%	48%
grade 1 events	534	280	419	139	496	427
	0%	0%	0%	0%	0%	0%
grade 2 events	20986	163337	27805	116061	28509	25839
	13%	39%	15%	26%	15%	14%
grade 3 events	8971	10513	10000	27792	10566	9486
	5%	2%	5%	6%	5%	5%
grade 4 events	8855	10238	10039	27119	10338	9358
	5%	2%	5%	6%	5%	5%
grade 5 events	1495	7918	1676	7424	2045	1805
	0%	1%	0%	1%	1%	1%
grade 6 events	16963	115843	25347	141127	24029	22376
	10%	28%	13%	32%	12%	12%
grade 7 events	21185	59144	20371	49750	22844	20306
	13%	14%	11%	11%	12%	11%

2.2 Compared Parameters

Parameter	Planned	Actual	Parameter	Planned	Actual
Instrument	ACIS	ACIS	Obspar format version number	6	6
Detector	ACIS-456789	ACIS-456789	Obspar file type	PREDICTED	ACTUAL
Grating	NONE	NONE	Obspar update status	NONE	UPDATED
Data mode	FAINT	FAINT	On-chip summing requested	N	N
Observation mode	SECONDARY	SECONDARY	Subarray requested	NONE	NONE
Pointing RA	0	99.95497467930474	Alternating exposures requested	N	N
Pointing Dec	0	60.01766671260407	Primary exposure time	3.2	3.2
Pointing Roll	0.0	109.0225316816505			
SIM focus pos (mm)	-0.684267	-0.7809083437167272			
SIM defocus (mm)	0	0.7524282956875696			
SIM translation stage pos (mm)	-190.132523	250.466033080201			
SIM translation stage offset (mm)	0	-0.01005468664627074			
Observation start time	152866711.337747	152866710.31304			
Observation start date	2002-11-05T06:58:31	2002-11-05T06:58:30			
Observation end time	15288812.388666	15288811.36395			
Observation end date	2002-11-05T13:06:52	2002-11-05T13:06:51			
Read mode	TIMED	TIMED			

2.3 Aspect

2.4 Star Slots

2.5 FID Slots

A Summary

A.1 Status

V&V Scientist	Jen Lauer
V&V Date (YYYY-MM-DD)	2006.10.12
V&V Edition	1
V&V Disposition and Status	OK
V&V Charge Time	8.46399996

A.2 Comments

The ACIS focal plane temperature was above calibration limits for the entire observation.