

V&V Reference Report

L2 ASCDS Version : 8.5

Observation 60954 - L2 Version 3
Chandra X-Ray Center

L2 Processing Date : Dec 18 2012

Contents

1	Front	2
2	OBI	3
2.1	OBI	3
2.1.1	Images	3
2.1.2	Bias	3
2.1.3	Parameters	4
2.1.4	Events	4
2.2	Compared Parameters	5
2.3	Star Slots	6
2.4	FID Slots	6
A	Summary	7
A.1	Status	7
A.2	Comments	7

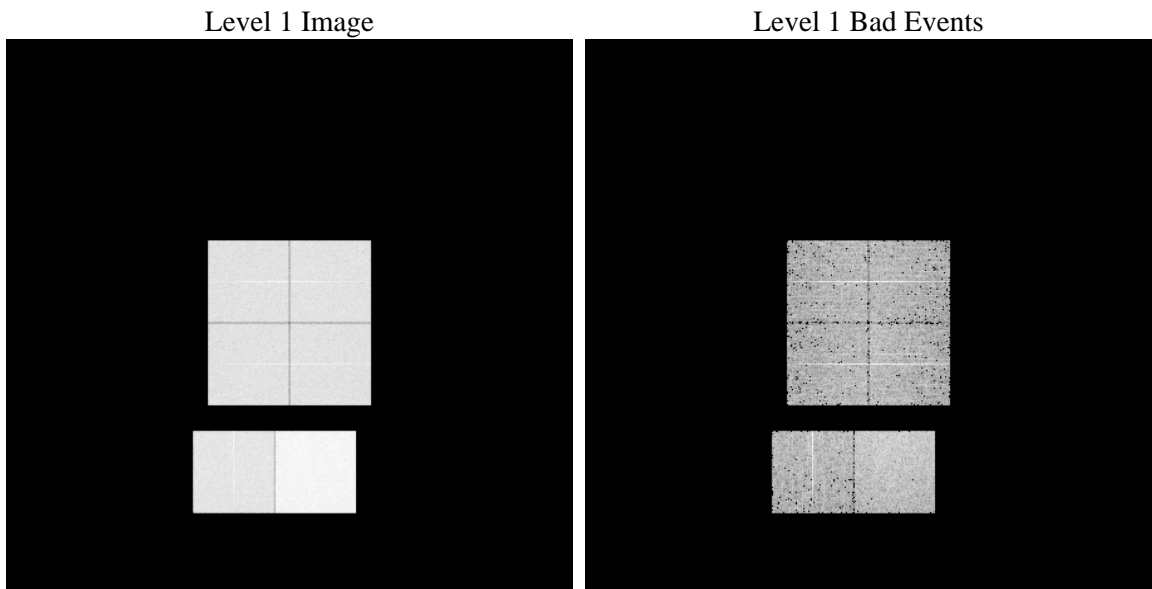
1 Front

seq_num	 	Sequence number
obs_id	60954	Observation id
title	ACIS-012367 diagnostics	Proposal title
observer	CHANDRA engineering request/realtime commanding	Principal investig
object	 	Source name
dtcycle	0	
cycle	P	events from which exps? Prim/Second/Both
ra_targ	0.0	Observer's specified target RA [deg]
dec_targ	0.0	Observer's specified target Dec [deg]
ra_nom	65.019066144209	Nominal RA [deg]
dec_nom	-10.978338623807	Nominal Dec [deg]
roll_nom	16.345940910274	Nominal Roll [deg]
revision	3	Processing version of data
ontime	7768.5782576501	Sum of GTIs [s]
livetime	7670.2078420755	Livetime [s]
ontime0	3957.2979323268	Sum of GTIs [s]
ontime1	4057.7686083913	Sum of GTIs [s]
ontime2	3873.032315731	Sum of GTIs [s]
ontime3	3885.9202941656	Sum of GTIs [s]
ontime6	4291.1216665804	Sum of GTIs [s]
ontime7	7768.5782576501	Sum of GTIs [s]
l2events	1207486	Number of level 2 events

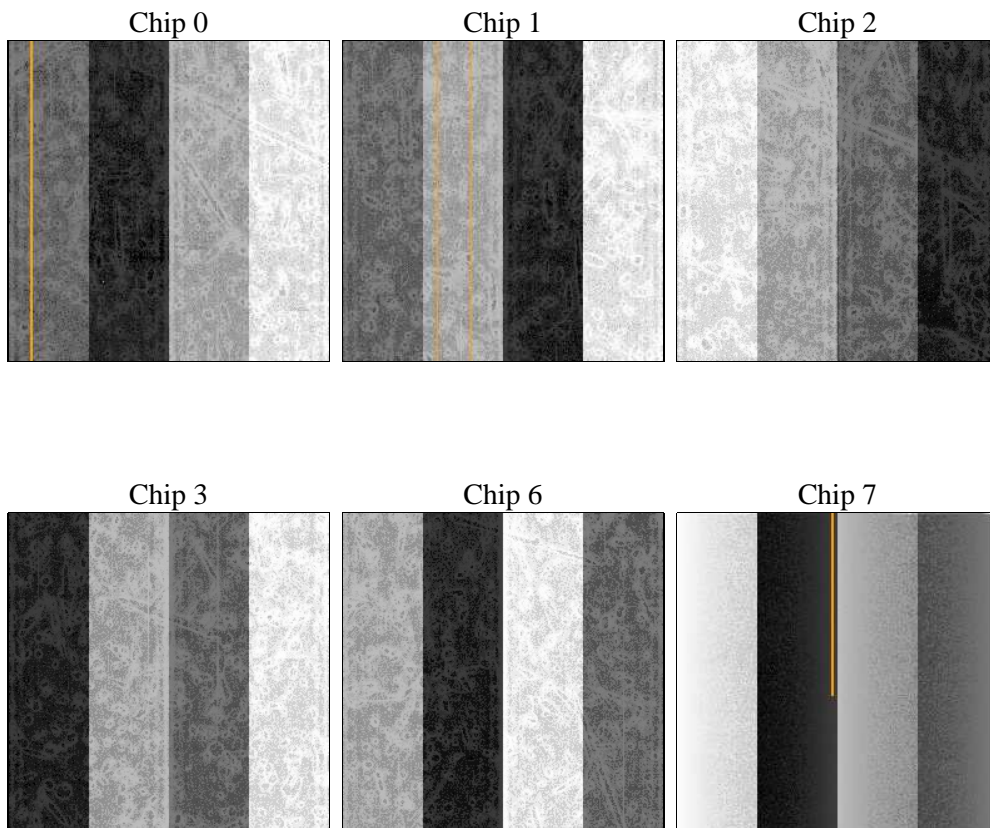
2 OBI

2.1 OBI

2.1.1 Images



2.1.2 Bias



2.1.3 Parameters

obi_num	0	Obi number	sched_exp_time	0.0	[s] Scheduled observation exposure time
ascdsver	8.5.1	Processing system revision	ontime	7768.5782576501	Sum of GTIs [s]
caldsver	4.5.5	 	ontime0	3957.2979323268	Sum of GTIs [s]
date	2012-12-19T00:15:15	Date and time of file creation	ontime1	4057.7686083913	Sum of GTIs [s]
revision	3	Processing version of data	ontime2	3873.032315731	Sum of GTIs [s]
			ontime3	3885.9202941656	Sum of GTIs [s]
			ontime6	4291.1216665804	Sum of GTIs [s]
			ontime7	7768.5782576501	Sum of GTIs [s]
			l1events	1424918	Number of level 1 events

2.1.4 Events

	ccd 0	ccd 1	ccd 2	ccd 3	ccd 6	ccd 7		ccd 0	ccd 1	ccd 2	ccd 3	ccd 6	ccd 7
level 1 events	199191	204301	198475	199861	225956	397134	grade 0 events	96822	99658	98067	98229	109310	90601
rejected events	24590	24136	24353	25879	26174	38078		48%	48%	49%	49%	48%	22%
rejected %	12%	11%	12%	12%	11%	9%	grade 1 events	533	480	516	536	436	252
								0%	0%	0%	0%	0%	0%
							grade 2 events	30474	31773	29108	29597	34546	79548
								15%	15%	14%	14%	15%	20%
							grade 3 events	11276	11434	11379	11144	12256	36279
								5%	5%	5%	5%	5%	9%
							grade 4 events	11099	11398	11290	11375	12117	36522
								5%	5%	5%	5%	5%	9%
							grade 5 events	1825	1725	1743	1893	2030	7432
								0%	0%	0%	0%	0%	1%
							grade 6 events	24930	25902	24278	23637	31553	116106
								12%	12%	12%	11%	13%	29%
							grade 7 events	22232	21931	22094	23450	23708	30394
								11%	10%	11%	11%	10%	7%

2.2 Compared Parameters

Parameter	Planned	Actual
Instrument	ACIS	ACIS
Detector	ACIS-012367	ACIS-012367
Grating	NONE	NONE
Data mode	FAINT	FAINT
Observation mode	SECONDARY	SECONDARY
[deg] Pointing RA	0	65.01906614420869
[deg] Pointing Dec	0	-10.97833862380674
[deg] Pointing Roll	0.0	16.34594091027423
[mm] SIM focus pos	-0.782348	-0.6828225247311905
[mm] SIM defocus	0	0.8505141146731063
[mm] SIM translation stage pos	-233.592463	250.466033080201
[mm] SIM translation stage offset	0	-0.01005468664627074
[s] Observation start time (MET)	154201429.493267	154201428.46856
Observation start date	2002-11-20T17:43:49	2002-11-20T17:43:48
[s] Observation end time (MET)	154238733.344818	154238732.32011
Observation end date	2002-11-21T04:05:33	2002-11-21T04:05:32
Read mode	TIMED	TIMED

Parameter	Planned	Actual
Obspar format version number	7	7
Obspar file type	PREDICTED	ACTUAL
Obspar update status	NONE	UPDATED
On-chip summing requested	N	N
Subarray requested	NONE	NONE
Alternating exposures requested	N	N
[s] Primary exposure time	3.2	3.2

2.3 Star Slots

2.4 FID Slots

A Summary

A.1 Status

V&V Scientist	Jen Lauer
V&V Date (YYYY-MM-DD)	2013.01.04
V&V Edition	1
V&V Disposition and Status	OK
V&V Charge Time	7.7685782576501

A.2 Comments