

V&V Reference Report

L2 ASCDS Version : 7.6.9

Observation 60954 - L2 Version 001
Chandra X-Ray Center

L2 Processing Date : Oct 9 2006

Contents

1	Front	2
2	OBI	3
2.1	OBI	3
2.1.1	Images	3
2.1.2	Bias	3
2.1.3	Parameters	4
2.1.4	Events	4
2.2	Compared Parameters	5
2.3	Aspect	6
2.4	Star Slots	8
2.5	FID Slots	8
A	Summary	9
A.1	Status	9
A.2	Comments	9

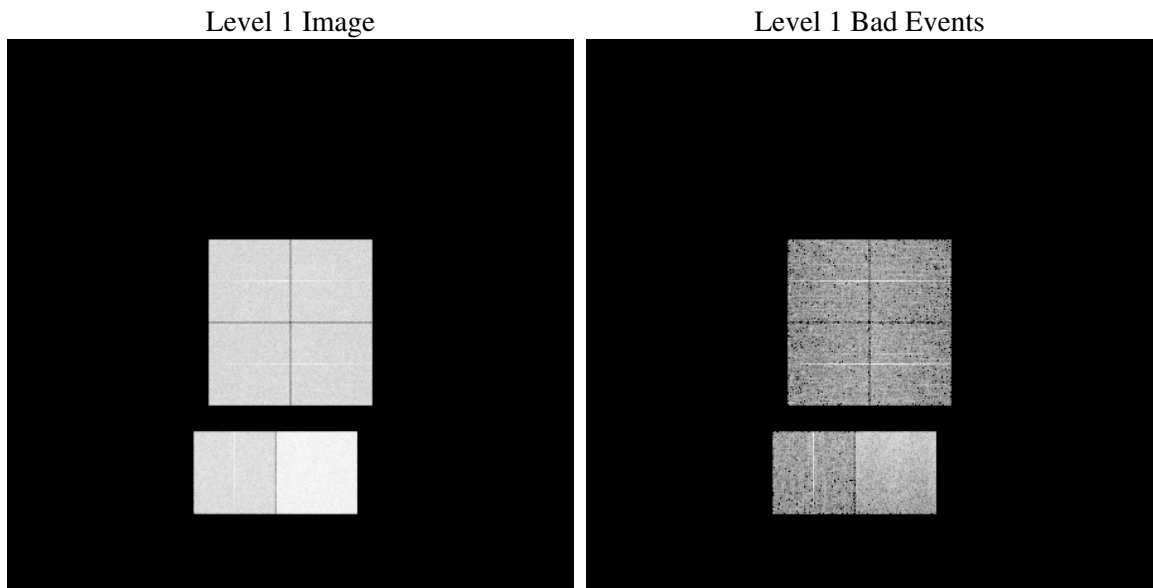
1 Front

seq_num	
obs_id	60954
title	ACIS-012367 diagnostics
observer	CHANDRA engineering request/realtime commanding
object	
dtcycle	0
cycle	P
ra_targ	0.0
dec_targ	0.0
ra_nom	65.019066140572
dec_nom	-10.978338624702
roll_nom	16.345940909603
revision	2
ontime	7768.1163566411
livetime	7669.7517899352
ontime0	3956.7606857419
ontime1	4057.2724018097
ontime2	3872.5771491528
ontime3	3885.3763131499
ontime6	4290.7075399756
ontime7	7768.1163566411
l2events	1195340

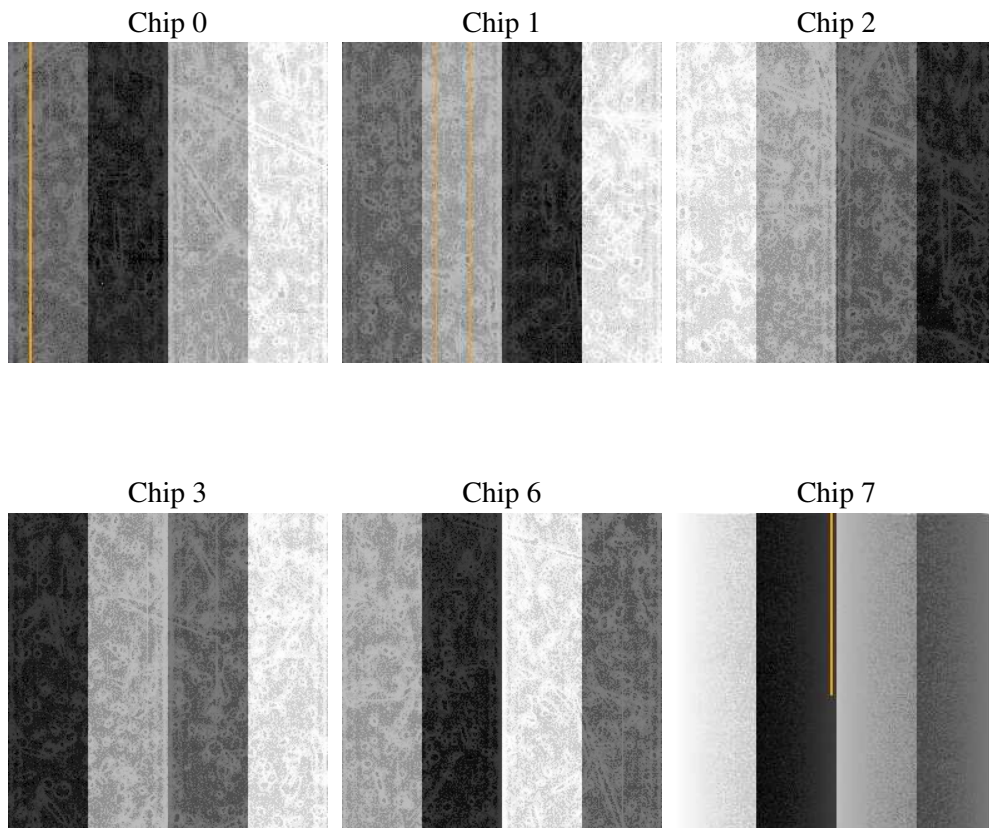
2 OBI

2.1 OBI

2.1.1 Images



2.1.2 Bias



2.1.3 Parameters

obi_num	0
ascdsver	7.6.9
caldbver	3.2.3
date	2006-10-09T20:45:41
revision	2

sched_exp_time	0.0
ontime	7768.6946432292
ontime0	3957.2979323268
ontime1	4057.7686083913
ontime2	3873.032315731
ontime3	3885.9956397414
ontime6	4291.1216665804
ontime7	7768.6946432292
l1events	1424918

2.1.4 Events

	ccd 0	ccd 1	ccd 2	ccd 3	ccd 6	ccd 7
level 1 events	199191	204301	198475	199861	225956	397134
rejected events	24593	24140	24351	25879	26176	50353
rejected %	12%	11%	12%	12%	11%	12%

	ccd 0	ccd 1	ccd 2	ccd 3	ccd 6	ccd 7
grade 0 events	96794	99640	98036	98211	109281	63701
	48%	48%	49%	49%	48%	16%
grade 1 events	532	479	512	533	436	150
	0%	0%	0%	0%	0%	0%
grade 2 events	30501	31791	29139	29615	34575	104479
	15%	15%	14%	14%	15%	26%
grade 3 events	11269	11430	11375	11132	12248	26058
	5%	5%	5%	5%	5%	6%
grade 4 events	11091	11394	11280	11371	12109	26006
	5%	5%	5%	5%	5%	6%
grade 5 events	1822	1723	1740	1890	2022	6736
	0%	0%	0%	0%	0%	1%
grade 6 events	24943	25906	24294	23653	31567	126537
	12%	12%	12%	11%	13%	31%
grade 7 events	22239	21938	22099	23456	23718	43467
	11%	10%	11%	11%	10%	10%

2.2 Compared Parameters

Parameter	Planned	Actual	Parameter	Planned	Actual
Instrument	ACIS	ACIS	Obspar format version number	6	6
Detector	ACIS-012367	ACIS-012367	Obspar file type	PREDICTED	ACTUAL
Grating	NONE	NONE	Obspar update status	NONE	UPDATED
Data mode	FAINT	FAINT	On-chip summing requested	N	N
Observation mode	SECONDARY	SECONDARY	Subarray requested	NONE	NONE
Pointing RA	0	65.01906614057212	Alternating exposures requested	N	N
Pointing Dec	0	-10.97833862470172	Primary exposure time	3.2	3.2
Pointing Roll	0.0	16.34594090960318			
SIM focus pos (mm)	-0.782348	-0.6828225247311905			
SIM defocus (mm)	0	0.8505141146731063			
SIM translation stage pos (mm)	-233.592463	250.466033080201			
SIM translation stage offset (mm)	0	-0.01005468664627074			
Observation start time	154201429.493267	154201428.46856			
Observation start date	2002-11-20T17:43:49	2002-11-20T17:43:48			
Observation end time	154238733.344818	154238732.32011			
Observation end date	2002-11-21T04:05:33	2002-11-21T04:05:32			
Read mode	TIMED	TIMED			

2.3 Aspect

2.4 Star Slots

2.5 FID Slots

A Summary

A.1 Status

V&V Scientist	Jen Lauer
V&V Date (YYYY-MM-DD)	2006.10.10
V&V Edition	1
V&V Disposition and Status	OK
V&V Charge Time	7.76811635

A.2 Comments

The ACIS focal plane temperature was above calibration limits for the first 1 ksec of the observation.