

V&V Reference Report

L2 ASCDS Version : 7.6.9

Observation 60949 - L2 Version 001
Chandra X-Ray Center

L2 Processing Date : Oct 13 2006

Contents

1	Front	2
2	OBI	3
2.1	OBI	3
2.1.1	Images	3
2.1.2	Bias	3
2.1.3	Parameters	4
2.1.4	Events	4
2.2	Compared Parameters	5
2.3	Aspect	6
2.4	Star Slots	8
2.5	FID Slots	8
A	Summary	9
A.1	Status	9
A.2	Comments	9

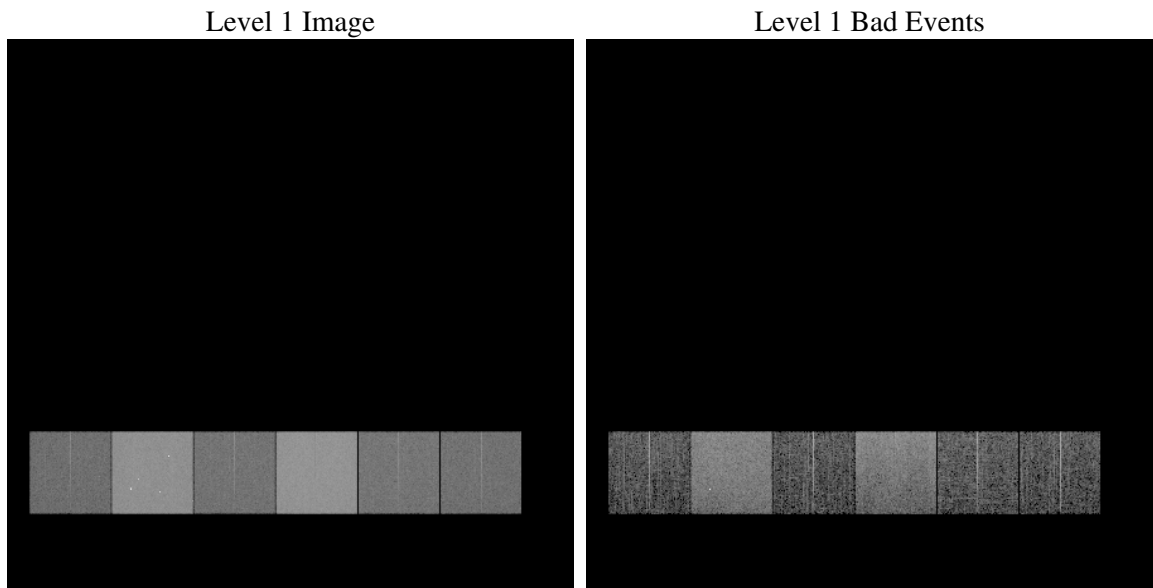
1 Front

seq_num	
obs_id	60949
title	ACIS-456789 diagnostics
observer	CHANDRA engineering request/realtime commanding
object	
dtcycle	0
cycle	P
ra_targ	0.0
dec_targ	0.0
ra_nom	32.114122959477
dec_nom	10.973934419043
roll_nom	292.93954463223
revision	3
ontime	8459.8297872841
livetime	8352.7063286196
ontime4	3141.4965517521
ontime5	8459.8708272874
ontime6	3423.4240188897
ontime7	8459.8297872841
ontime8	3553.1475387216
ontime9	3306.6239868701
l2events	1261420

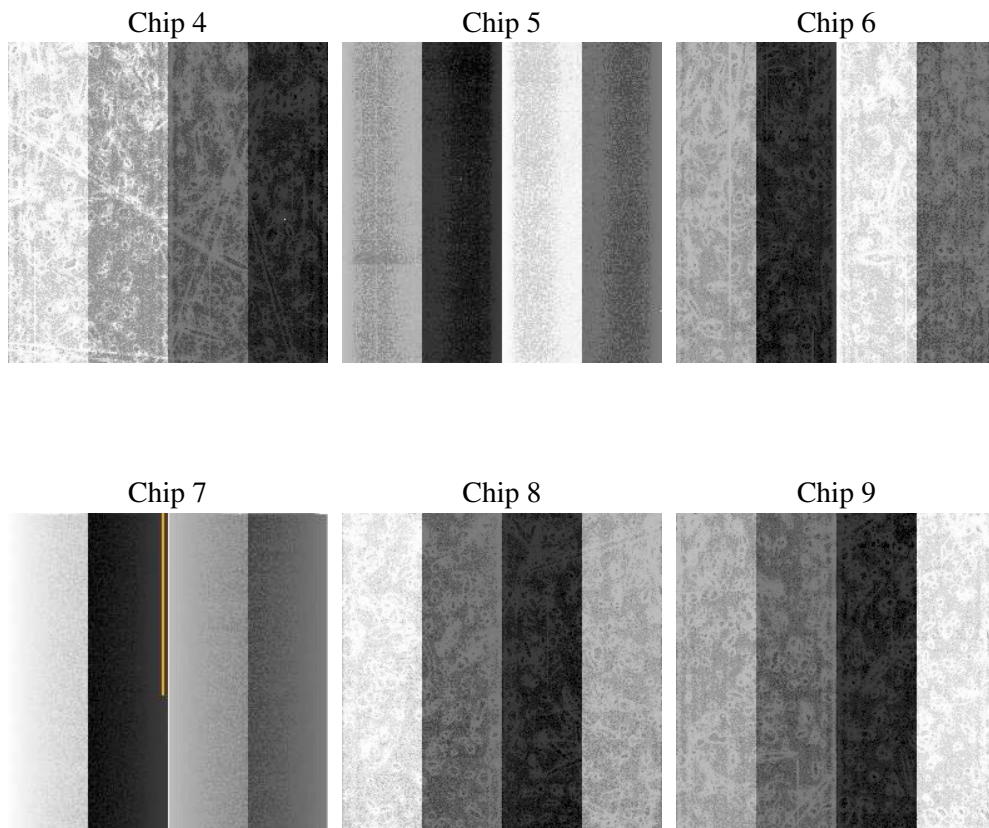
2 OBI

2.1 OBI

2.1.1 Images



2.1.2 Bias



2.1.3 Parameters

obi_num	0
ascdsver	7.6.9
caldsver	3.2.3
date	2006-10-13T22:47:40
revision	3

sched_exp_time	0.0
ontime	8462.2612923086
ontime4	3143.8049367666
ontime5	8462.2612923086
ontime6	3425.7734439075
ontime7	8462.2612923086
ontime8	3555.4148837626
ontime9	3309.0965318978
l1events	1546689

2.1.4 Events

	ccd 4	ccd 5	ccd 6	ccd 7	ccd 8	ccd 9
level 1 events	159081	402617	182174	438067	192600	172150
rejected events	24935	66741	24150	59019	26979	24514
rejected %	15%	16%	13%	13%	14%	14%

	ccd 4	ccd 5	ccd 6	ccd 7	ccd 8	ccd 9
grade 0 events	77570	40538	86230	68796	91203	81471
	48%	10%	47%	15%	47%	47%
grade 1 events	595	109	407	161	455	468
	0%	0%	0%	0%	0%	0%
grade 2 events	21745	160900	27282	114115	28826	25658
	13%	39%	14%	26%	14%	14%
grade 3 events	9015	10806	9905	28304	10712	9702
	5%	2%	5%	6%	5%	5%
grade 4 events	8792	10609	9812	27939	10705	9360
	5%	2%	5%	6%	5%	5%
grade 5 events	1569	7434	1720	7678	1988	1669
	0%	1%	0%	1%	1%	0%
grade 6 events	17165	113144	24945	140025	24306	21596
	10%	28%	13%	31%	12%	12%
grade 7 events	22630	59077	21873	51049	24405	22226
	14%	14%	12%	11%	12%	12%

2.2 Compared Parameters

Parameter	Planned	Actual	Parameter	Planned	Actual
Instrument	ACIS	ACIS	Obspar format version number	6	6
Detector	ACIS-456789	ACIS-456789	Obspar file type	PREDICTED	ACTUAL
Grating	NONE	NONE	Obspar update status	NONE	UPDATED
Data mode	FAINT	FAINT	On-chip summing requested	N	N
Observation mode	SECONDARY	SECONDARY	Subarray requested	NONE	NONE
Pointing RA	0	32.11412295947702	Alternating exposures requested	N	N
Pointing Dec	0	10.97393441904267	Primary exposure time	0.000000	3.2
Pointing Roll	0.0	292.9395446322283			
SIM focus pos (mm)	-0.684267	-0.6828225247311905			
SIM defocus (mm)	0	0.8505141146731063			
SIM translation stage pos (mm)	-190.132523	250.4635187648994			
SIM translation stage offset (mm)	0	-0.007540371344731511			
Observation start time	154694446.313801	154694445.28909			
Observation start date	2002-11-26T10:40:46	2002-11-26T10:40:45			
Observation end time	154716662.164729	154716661.14001			
Observation end date	2002-11-26T16:51:02	2002-11-26T16:51:01			
Read mode	TIMED	TIMED			

2.3 Aspect

2.4 Star Slots

2.5 FID Slots

A Summary

A.1 Status

V&V Scientist	Beth Sundheim
V&V Date (YYYY-MM-DD)	2006.10.15
V&V Edition	1
V&V Disposition and Status	OK
V&V Charge Time	8.45982978

A.2 Comments