

V&V Reference Report

L2 ASCDS Version : 7.6.9

Observation 60946 - L2 Version 001
Chandra X-Ray Center

L2 Processing Date : Oct 13 2006

Contents

1	Front	2
2	OBI	3
2.1	OBI	3
2.1.1	Images	3
2.1.2	Bias	3
2.1.3	Parameters	4
2.1.4	Events	4
2.2	Compared Parameters	5
2.3	Aspect	6
2.4	Star Slots	8
2.5	FID Slots	8
A	Summary	9
A.1	Status	9
A.2	Comments	9

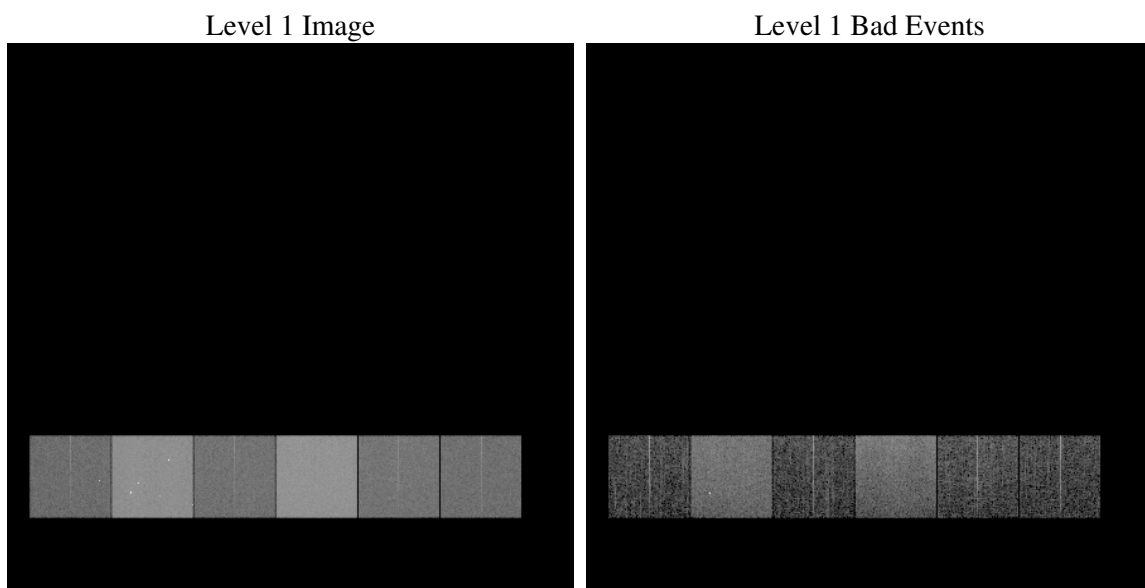
1 Front

seq_num	
obs_id	60946
title	ACIS-456789 diagnostics
observer	CHANDRA engineering request/realtime commanding
object	
dtcycle	0
cycle	P
ra_targ	0.0
dec_targ	0.0
ra_nom	100.15209000657
dec_nom	78.902846519661
roll_nom	141.49224787368
revision	2
ontime	8460.5515673459
livetime	8353.4189690676
ontime4	3054.7125740051
ontime5	8460.5926073492
ontime6	3388.4974578619
ontime7	8460.5515673459
ontime8	3531.184948802
ontime9	3239.287314862
l2events	1265125

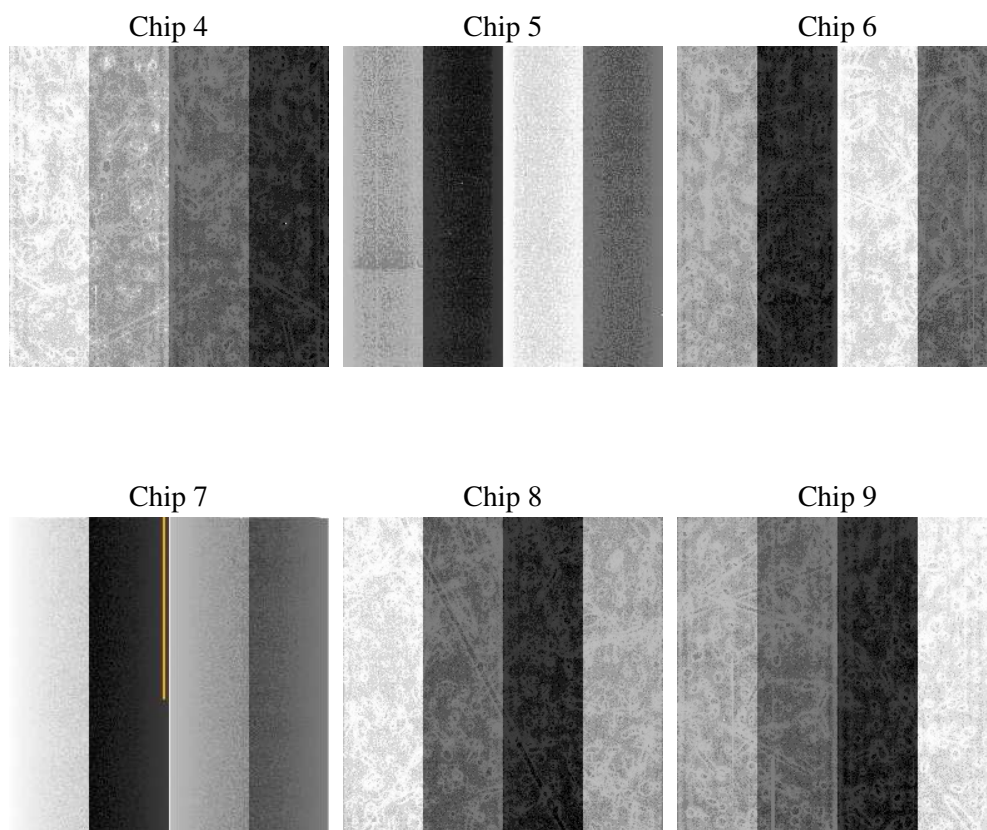
2 OBI

2.1 OBI

2.1.1 Images



2.1.2 Bias



2.1.3 Parameters

obi_num	1
ascdsver	7.6.9
caldbver	3.2.3
date	2006-10-13T23:01:08
revision	2

sched_exp_time	0.0
ontime	8462.25830248
ontime4	3056.2961891294
ontime5	8462.25830248
ontime6	3390.1221129894
ontime7	8462.25830248
ontime8	3532.7275239527
ontime9	3241.0350899994
l1events	1547828

2.1.4 Events

	ccd 4	ccd 5	ccd 6	ccd 7	ccd 8	ccd 9
level 1 events	156806	405091	181444	441515	194266	168706
rejected events	23990	66365	23496	58641	27836	22896
rejected %	15%	16%	12%	13%	14%	13%

	ccd 4	ccd 5	ccd 6	ccd 7	ccd 8	ccd 9
grade 0 events	77207	41198	85767	69879	91526	80457
	49%	10%	47%	15%	47%	47%
grade 1 events	570	125	458	169	487	444
	0%	0%	0%	0%	0%	0%
grade 2 events	21102	161996	27384	115426	28830	24867
	13%	39%	15%	26%	14%	14%
grade 3 events	8982	10996	9846	28440	10729	9440
	5%	2%	5%	6%	5%	5%
grade 4 events	8805	10595	9798	28097	10737	9315
	5%	2%	5%	6%	5%	5%
grade 5 events	1615	7128	1789	7753	2077	1690
	1%	1%	0%	1%	1%	1%
grade 6 events	16720	114077	25306	141178	24608	21873
	10%	28%	13%	31%	12%	12%
grade 7 events	21805	58976	21096	50573	25272	20620
	13%	14%	11%	11%	13%	12%

2.2 Compared Parameters

Parameter	Planned	Actual	Parameter	Planned	Actual
Instrument	ACIS	ACIS	Obspar format version number	6	6
Detector	ACIS-456789	ACIS-456789	Obspar file type	PREDICTED	ACTUAL
Grating	NONE	NONE	Obspar update status	NONE	UPDATED
Data mode	FAINT	FAINT	On-chip summing requested	N	N
Observation mode	SECONDARY	SECONDARY	Subarray requested	NONE	NONE
Pointing RA	0	100.1520900065717	Alternating exposures requested	N	N
Pointing Dec	0	78.90284651966132	Primary exposure time	0.000000	3.2
Pointing Roll	0.0	141.4922478736761			
SIM focus pos (mm)	-0.684267	-0.7809083437167272			
SIM defocus (mm)	0	0.7524282956875696			
SIM translation stage pos (mm)	-190.132523	250.466033080201			
SIM translation stage offset (mm)	0	-0.01005468664627074			
Observation start time	154923814.673357	154923813.64865			
Observation start date	2002-11-29T02:23:35	2002-11-29T02:23:33			
Observation end time	154946752.124313	154946751.0996			
Observation end date	2002-11-29T08:45:52	2002-11-29T08:45:51			
Read mode	TIMED	TIMED			

2.3 Aspect

2.4 Star Slots

2.5 FID Slots

A Summary

A.1 Status

V&V Scientist	Beth Sundheim
V&V Date (YYYY-MM-DD)	2006.10.15
V&V Edition	1
V&V Disposition and Status	OK
V&V Charge Time	8.46055156

A.2 Comments