

V&V Reference Report

L2 ASCDS Version : 7.6.9

Observation 60923 - L2 Version 001
Chandra X-Ray Center

L2 Processing Date : Oct 15 2006

Contents

1	Front	2
2	OBI	3
2.1	OBI	3
2.1.1	Images	3
2.1.2	Bias	3
2.1.3	Parameters	4
2.1.4	Events	4
2.2	Compared Parameters	5
2.3	Aspect	6
2.4	Star Slots	8
2.5	FID Slots	8
A	Summary	9
A.1	Status	9
A.2	Comments	9

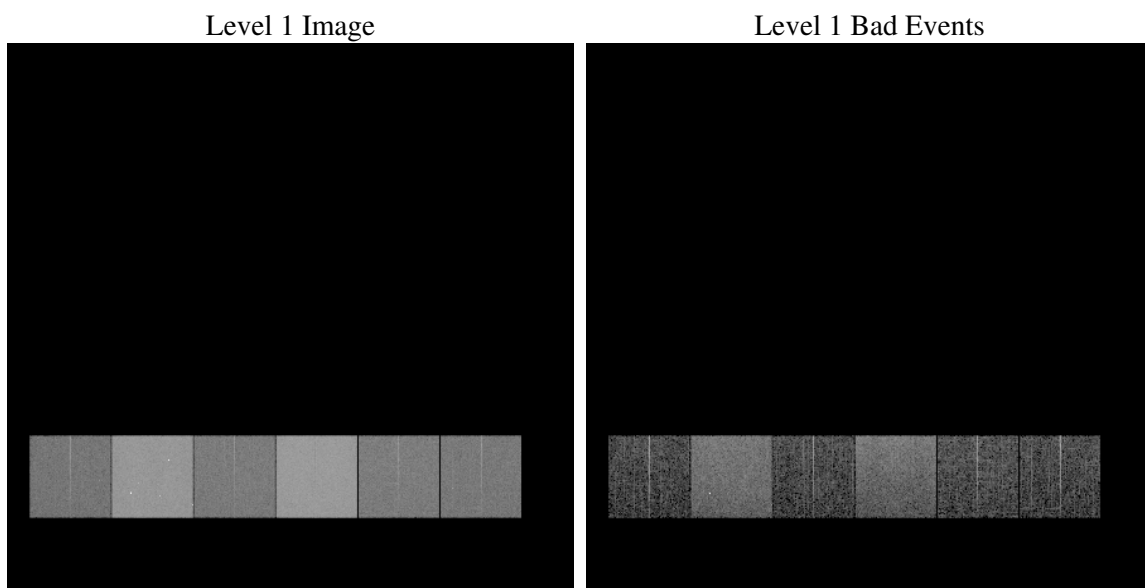
1 Front

seq_num	
obs_id	60923
title	ACIS-456789 diagnostics
observer	CHANDRA engineering request/realtime commanding
object	
dtcycle	0
cycle	P
ra_targ	0.0
dec_targ	0.0
ra_nom	76.425315678876
dec_nom	-0.086799967203583
roll_nom	354.67409897173
revision	2
ontime	7791.9999709725
livetime	7693.332975561
ontime4	2938.284094125
ontime5	7791.9999709725
ontime6	3255.8635882735
ontime7	7791.9999709725
ontime8	3320.7657310069
ontime9	3132.5808391571
l2events	1167788

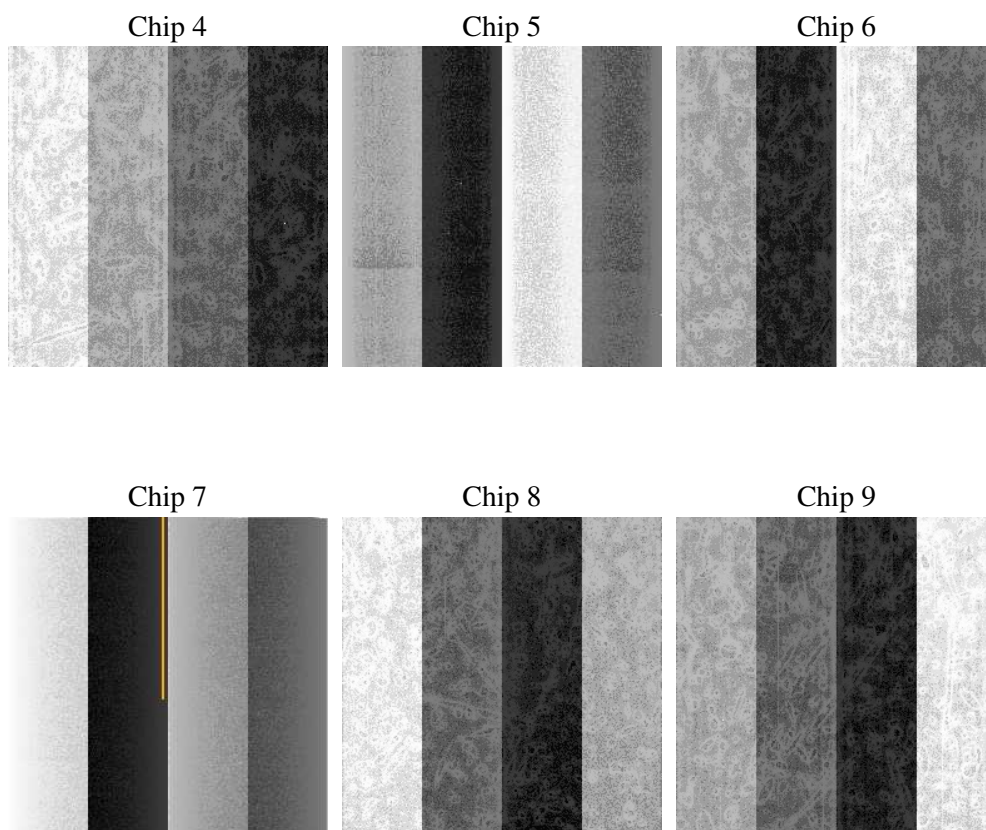
2 OBI

2.1 OBI

2.1.1 Images



2.1.2 Bias



2.1.3 Parameters

obi_num	0
ascdsver	7.6.9
caldsver	3.2.3
date	2006-10-15T08:21:48
revision	2

sched_exp_time	0.0
ontime	7794.6092248559
ontime4	2939.6185993552
ontime5	7794.6092248559
ontime6	3257.239133507
ontime7	7794.6092248559
ontime8	3322.0591962636
ontime9	3134.0795044005
l1events	1426838

2.1.4 Events

	ccd 4	ccd 5	ccd 6	ccd 7	ccd 8	ccd 9
level 1 events	147562	367268	172093	399876	178913	161126
rejected events	21941	60000	22945	52223	25815	22600
rejected %	14%	16%	13%	13%	14%	14%

	ccd 4	ccd 5	ccd 6	ccd 7	ccd 8	ccd 9
grade 0 events	72924	37495	81619	64950	84356	76220
	49%	10%	47%	16%	47%	47%
grade 1 events	503	150	378	136	410	454
	0%	0%	0%	0%	0%	0%
grade 2 events	20109	146685	25854	103803	26727	23735
	13%	39%	15%	25%	14%	14%
grade 3 events	8501	10412	9237	26265	9783	8923
	5%	2%	5%	6%	5%	5%
grade 4 events	8153	10304	9152	26067	9796	8930
	5%	2%	5%	6%	5%	5%
grade 5 events	1444	6978	1632	6971	1853	1687
	0%	1%	0%	1%	1%	1%
grade 6 events	15934	102372	23286	126568	22436	20718
	10%	27%	13%	31%	12%	12%
grade 7 events	19994	52872	20935	45116	23552	20459
	13%	14%	12%	11%	13%	12%

2.2 Compared Parameters

Parameter	Planned	Actual	Parameter	Planned	Actual
Instrument	ACIS	ACIS	Obspar format version number	6	6
Detector	ACIS-456789	ACIS-456789	Obspar file type	PREDICTED	ACTUAL
Grating	NONE	NONE	Obspar update status	NONE	UPDATED
Data mode	FAINT	FAINT	On-chip summing requested	N	N
Observation mode	SECONDARY	SECONDARY	Subarray requested	NONE	NONE
Pointing RA	0	76.42531567887579	Alternating exposures requested	N	N
Pointing Dec	0	-0.08679996720358331	Primary exposure time	0.000000	3.2
Pointing Roll	0.0	354.6740989717283			
SIM focus pos (mm)	-0.684267	-1.428180813131781			
SIM defocus (mm)	0	0.1051558262725154			
SIM translation stage pos (mm)	-190.132523	250.466033080201			
SIM translation stage offset (mm)	0	-0.01005468664627074			
Observation start time	156030205.869521	156030204.84479			
Observation start date	2002-12-11T21:43:26	2002-12-11T21:43:24			
Observation end time	156040792.069964	156040791.04524			
Observation end date	2002-12-12T00:39:52	2002-12-12T00:39:51			
Read mode	TIMED	TIMED			

2.3 Aspect

2.4 Star Slots

2.5 FID Slots

A Summary

A.1 Status

V&V Scientist	Beth Sundheim
V&V Date (YYYY-MM-DD)	2006.10.15
V&V Edition	1
V&V Disposition and Status	OK
V&V Charge Time	7.79199997

A.2 Comments