

# V&V Reference Report

## L2 ASCDS Version : 8.4.5

Observation 60911 - L2 Version 3  
Chandra X-Ray Center

L2 Processing Date : Oct 19 2012

## Contents

<b>1</b>	<b>Front</b>	<b>2</b>
<b>2</b>	<b>OBI</b>	<b>3</b>
2.1	OBI . . . . .	3
2.1.1	Images . . . . .	3
2.1.2	Bias . . . . .	3
2.1.3	Parameters . . . . .	4
2.1.4	Events . . . . .	4
2.2	Compared Parameters . . . . .	5
2.3	Star Slots . . . . .	6
2.4	FID Slots . . . . .	6
<b>A</b>	<b>Summary</b>	<b>7</b>
A.1	Status . . . . .	7
A.2	Comments . . . . .	7

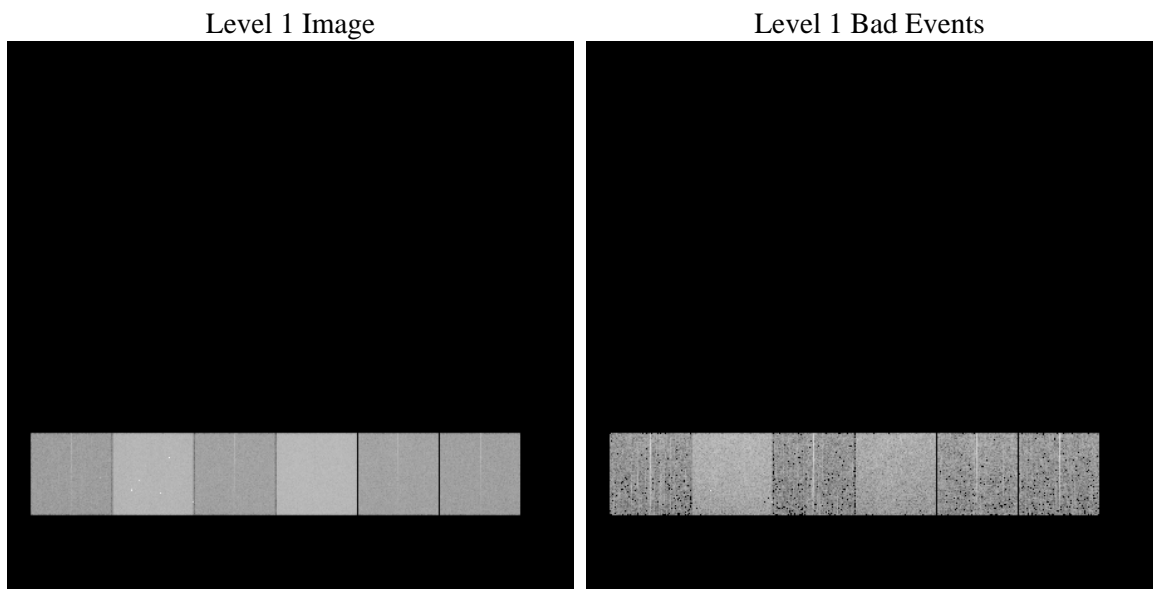
# 1 Front

seq_num	&#160	Sequence number
obs_id	60911	Observation id
title	ACIS-456789 diagnostics	Proposal title
observer	CHANDRA engineering request/realtime commanding	Principal investig
object	&#160	Source name
dtcycle	0	&#160
cycle	P	events from which exps? Prim/Second/Both
ra_targ	0.0	Observer's specified target RA [deg]
dec_targ	0.0	Observer's specified target Dec [deg]
ra_nom	87.128355809058	Nominal RA [deg]
dec_nom	8.6056363599978	Nominal Dec [deg]
roll_nom	338.48319892587	Nominal Roll [deg]
revision	3	Processing version of data
ontime	7791.9999709725	Sum of GTIs [s]
livetime	7693.332975561	Livetime [s]
ontime4	3061.3475343883	Sum of GTIs [s]
ontime5	7791.9999709725	Sum of GTIs [s]
ontime6	3404.854991138	Sum of GTIs [s]
ontime7	7791.9999709725	Sum of GTIs [s]
ontime8	3484.7290763855	Sum of GTIs [s]
ontime9	3275.0911076963	Sum of GTIs [s]
l2events	1188646	Number of level 2 events

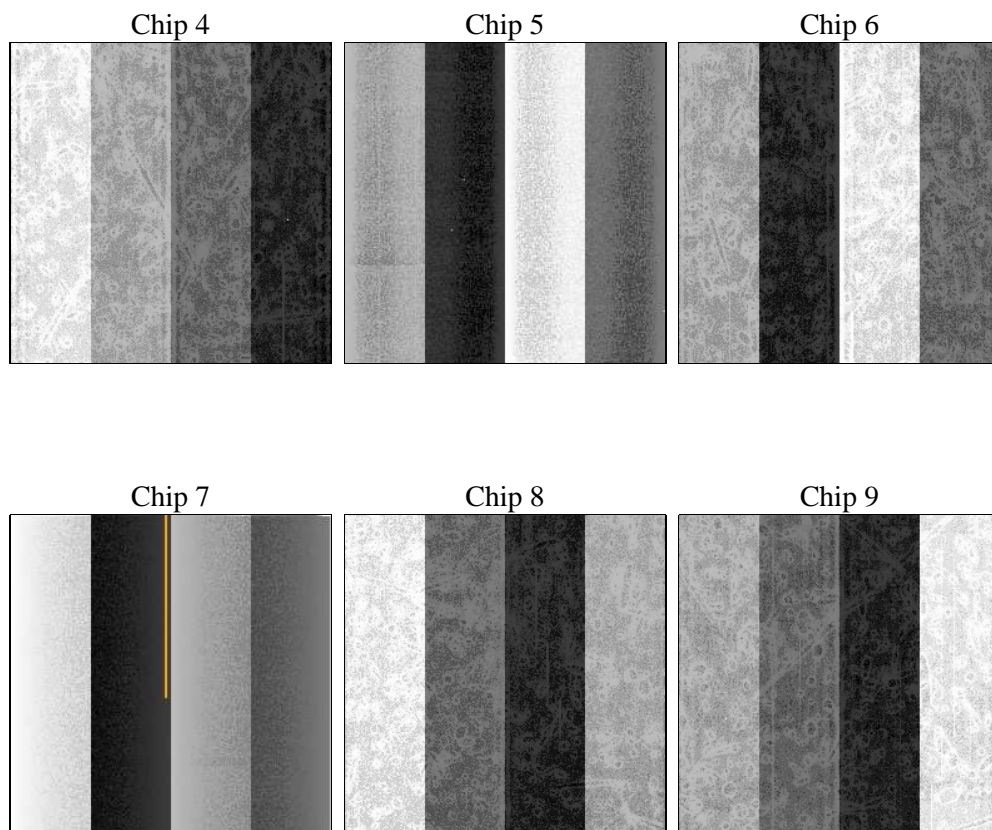
## 2 OBI

### 2.1 OBI

#### 2.1.1 Images



#### 2.1.2 Bias



### 2.1.3 Parameters

obi_num	1	Obi number	sched_exp_time	0.0	[s] Scheduled observation exposure time
ascdsver	8.4.5	Processing system revision	ontime	7791.9999709725	Sum of GTIs [s]
caldbver	4.5.2	&#160	ontime4	3061.3475343883	Sum of GTIs [s]
date	2012-10-19T16:44:30	Date and time of file creation	ontime5	7791.9999709725	Sum of GTIs [s]
revision	3	Processing version of data	ontime6	3404.854991138	Sum of GTIs [s]
			ontime7	7791.9999709725	Sum of GTIs [s]
			ontime8	3484.7290763855	Sum of GTIs [s]
			ontime9	3275.0911076963	Sum of GTIs [s]
			l1events	1424656	Number of level 1 events

### 2.1.4 Events

	ccd 4	ccd 5	ccd 6	ccd 7	ccd 8	ccd 9		ccd 4	ccd 5	ccd 6	ccd 7	ccd 8	ccd 9
level 1 events	151141	358383	176246	391078	183588	164220	grade 0 events	74685	70125	84462	88960	87966	78676
rejected events	23403	49666	21836	38418	25085	22083		49%	19%	47%	22%	47%	47%
rejected %	15%	13%	12%	9%	13%	13%	grade 1 events	536	258	340	222	385	430
								0%	0%	0%	0%	0%	0%
							grade 2 events	19757	114948	26617	78265	27300	24451
								13%	32%	15%	20%	14%	14%
							grade 3 events	8505	18056	9630	35857	10057	8898
								5%	5%	5%	9%	5%	5%
							grade 4 events	8567	18091	9640	35302	10137	8964
								5%	5%	5%	9%	5%	5%
							grade 5 events	1397	8741	1669	7466	1959	1761
								0%	2%	0%	1%	1%	1%
							grade 6 events	16224	87497	24061	114276	23043	21148
								10%	24%	13%	29%	12%	12%
							grade 7 events	21470	40667	19827	30730	22741	19892
								14%	11%	11%	7%	12%	12%

## 2.2 Compared Parameters

Parameter	Planned	Actual	Parameter	Planned	Actual
Instrument	ACIS	ACIS	Obspar format version number	7	7
Detector	ACIS-456789	ACIS-456789	Obspar file type	PREDICTED	ACTUAL
Grating	NONE	NONE	Obspar update status	NONE	UPDATED
Data mode	FAINT	FAINT	On-chip summing requested	N	N
Observation mode	SECONDARY	SECONDARY	Subarray requested	NONE	NONE
[deg] Pointing RA	0	87.12835580905822	Alternating exposures requested	N	N
[deg] Pointing Dec	0	8.605636359997785	[s] Primary exposure time	3.2	3.2
[deg] Pointing Roll	0.0	338.4831989258674			
[mm] SIM focus pos	-0.684267	-0.6828225247311905			
[mm] SIM defocus	0	0.8505141146731063			
[mm] SIM translation stage pos	-190.132523	250.4635187648994			
[mm] SIM translation stage offset	0	-0.007540371344731511			
[s] Observation start time (MET)	157179317.017461	157179315.99275			
Observation start date	2002-12-25T04:55:17	2002-12-25T04:55:15			
[s] Observation end time (MET)	157209763.618733	157209762.59402			
Observation end date	2002-12-25T13:22:44	2002-12-25T13:22:42			
Read mode	TIMED	TIMED			

## **2.3 Star Slots**

## **2.4 FID Slots**

## A Summary

### A.1 Status

V&V Scientist	Beth Sundheim
V&V Date (YYYY-MM-DD)	2012.11.20
V&V Edition	1
V&V Disposition and Status	OK
V&V Charge Time	7.7919999709725

### A.2 Comments