

V&V Reference Report

L2 ASCDS Version : 7.6.9

Observation 60911 - L2 Version 001
Chandra X-Ray Center

L2 Processing Date : Oct 16 2006

Contents

1	Front	2
2	OBI	3
2.1	OBI	3
2.1.1	Images	3
2.1.2	Bias	3
2.1.3	Parameters	4
2.1.4	Events	4
2.2	Compared Parameters	5
2.3	Aspect	6
2.4	Star Slots	8
2.5	FID Slots	8
A	Summary	9
A.1	Status	9
A.2	Comments	9

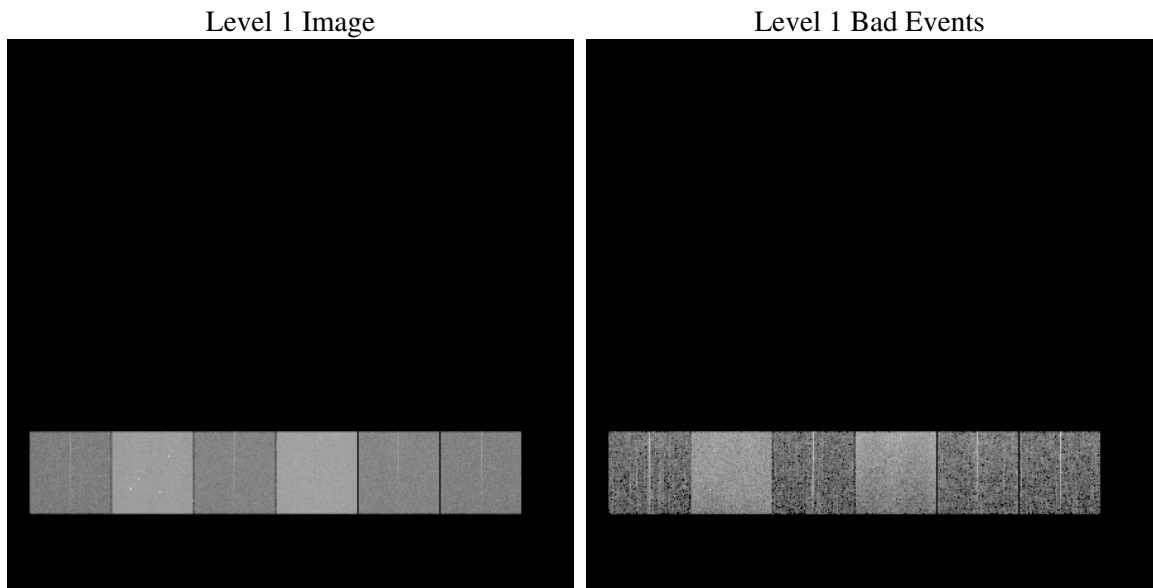
1 Front

seq_num	
obs_id	60911
title	ACIS-456789 diagnostics
observer	CHANDRA engineering request/realtime commanding
object	
dtcycle	0
cycle	P
ra_targ	0.0
dec_targ	0.0
ra_nom	87.128355812723
dec_nom	8.6056363616403
roll_nom	338.48319892373
revision	2
ontime	7791.4693871439
livetime	7692.8091103042
ontime4	3059.7475343943
ontime5	7791.5104271472
ontime6	3403.2549911439
ontime7	7791.4693871439
ontime8	3484.3626525402
ontime9	3273.4911077023
l2events	1167926

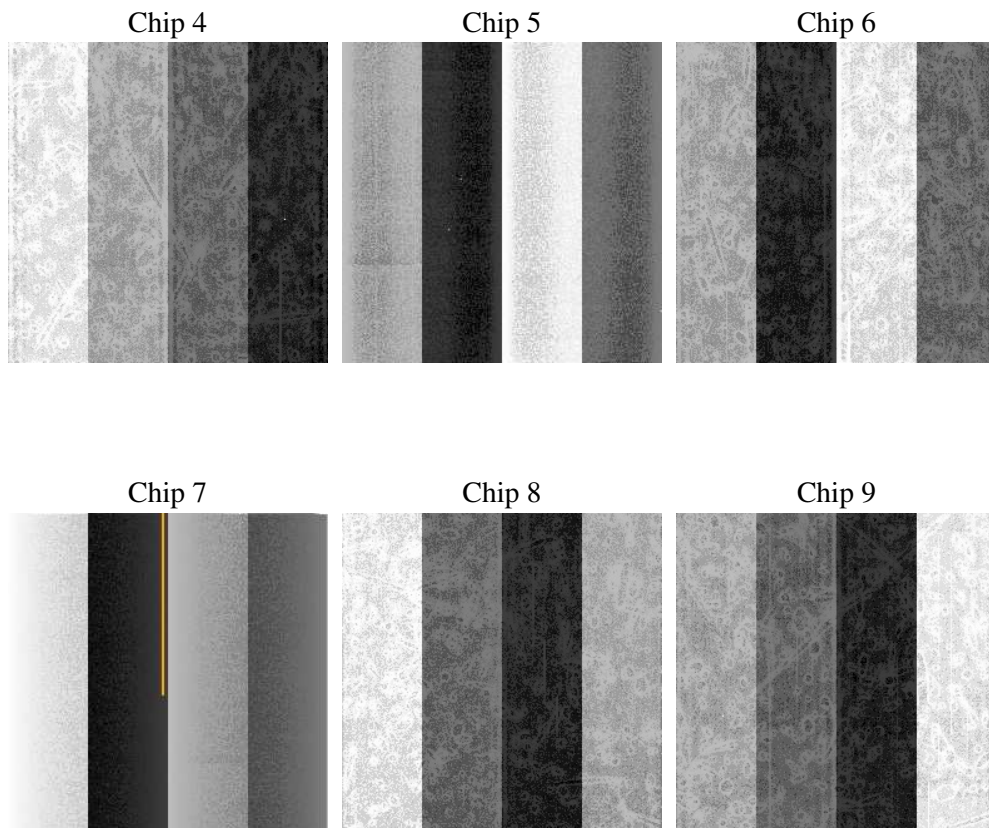
2 OBI

2.1 OBI

2.1.1 Images



2.1.2 Bias



2.1.3 Parameters

obi_num	1
ascdsver	7.6.9
caldbver	3.2.3
date	2006-10-16T08:38:14
revision	2

sched_exp_time	0.0
ontime	7794.6231054962
ontime4	3062.7781327367
ontime5	7794.6231054962
ontime6	3406.3266294897
ontime7	7794.6231054962
ontime8	3487.3522109091
ontime9	3276.6858660579
l1events	1424656

2.1.4 Events

	ccd 4	ccd 5	ccd 6	ccd 7	ccd 8	ccd 9
level 1 events	151141	358383	176246	391078	183588	164220
rejected events	23535	57793	21992	50896	25252	22220
rejected %	15%	16%	12%	13%	13%	13%

	ccd 4	ccd 5	ccd 6	ccd 7	ccd 8	ccd 9
grade 0 events	74647	35924	84383	62262	87913	78631
	49%	10%	47%	15%	47%	47%
grade 1 events	532	156	340	144	380	423
	0%	0%	0%	0%	0%	0%
grade 2 events	19795	144337	26696	103004	27354	24496
	13%	40%	15%	26%	14%	14%
grade 3 events	8491	9559	9611	25555	10042	8883
	5%	2%	5%	6%	5%	5%
grade 4 events	8551	9518	9624	24983	10116	8947
	5%	2%	5%	6%	5%	5%
grade 5 events	1398	6381	1668	6645	1959	1764
	0%	1%	0%	1%	1%	1%
grade 6 events	16249	101387	24078	124530	23068	21175
	10%	28%	13%	31%	12%	12%
grade 7 events	21478	51121	19846	43955	22756	19901
	14%	14%	11%	11%	12%	12%

2.2 Compared Parameters

Parameter	Planned	Actual	Parameter	Planned	Actual
Instrument	ACIS	ACIS	Obspar format version number	6	6
Detector	ACIS-456789	ACIS-456789	Obspar file type	PREDICTED	ACTUAL
Grating	NONE	NONE	Obspar update status	NONE	UPDATED
Data mode	FAINT	FAINT	On-chip summing requested	N	N
Observation mode	SECONDARY	SECONDARY	Subarray requested	NONE	NONE
Pointing RA	0	87.12835581272283	Alternating exposures requested	N	N
Pointing Dec	0	8.605636361640283	Primary exposure time	3.2	3.2
Pointing Roll	0.0	338.483198923728			
SIM focus pos (mm)	-0.684267	-0.6828225247311905			
SIM defocus (mm)	0	0.8505141146731063			
SIM translation stage pos (mm)	-190.132523	250.4635187648994			
SIM translation stage offset (mm)	0	-0.007540371344731511			
Observation start time	157179317.017461	157179315.99275			
Observation start date	2002-12-25T04:55:17	2002-12-25T04:55:15			
Observation end time	157209763.618733	157209762.59402			
Observation end date	2002-12-25T13:22:44	2002-12-25T13:22:42			
Read mode	TIMED	TIMED			

2.3 Aspect

2.4 Star Slots

2.5 FID Slots

A Summary

A.1 Status

V&V Scientist	Jen Lauer
V&V Date (YYYY-MM-DD)	2006.10.16
V&V Edition	1
V&V Disposition and Status	OK
V&V Charge Time	7.79146938

A.2 Comments

The ACIS focal plane temperature was above calibration limits for the entire observation.