

V&V Reference Report

L2 ASCDS Version : 7.6.9

Observation 61709 - L2 Version 001
Chandra X-Ray Center

L2 Processing Date : Nov 7 2006

Contents

1	Front	2
2	OBI	3
2.1	OBI	3
2.1.1	Images	3
2.1.2	Bias	3
2.1.3	Parameters	4
2.1.4	Events	4
2.2	Compared Parameters	5
2.3	Aspect	6
2.4	Star Slots	8
2.5	FID Slots	8
A	Summary	9
A.1	Status	9
A.2	Comments	9

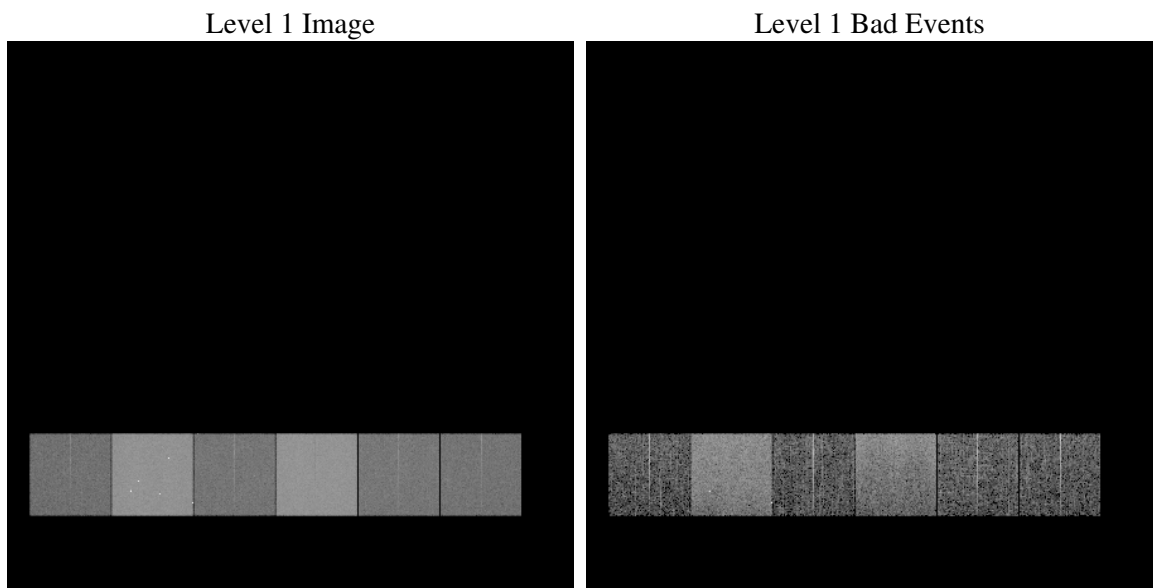
1 Front

seq_num	
obs_id	61709
title	ACIS-456789 diagnostics
observer	CHANDRA engineering request/realtime commanding
object	
dtcycle	0
cycle	P
ra_targ	0.0
dec_targ	0.0
ra_nom	104.02856940448
dec_nom	-40.018525851796
roll_nom	287.12496946635
revision	2
ontime	5072.825793758
livetime	5008.5906190685
ontime4	1958.1430114955
ontime5	5435.8140112013
ontime6	2133.1180413812
ontime7	5072.825793758
ontime8	2201.2942260653
ontime9	2110.3075417578
l2events	1196947

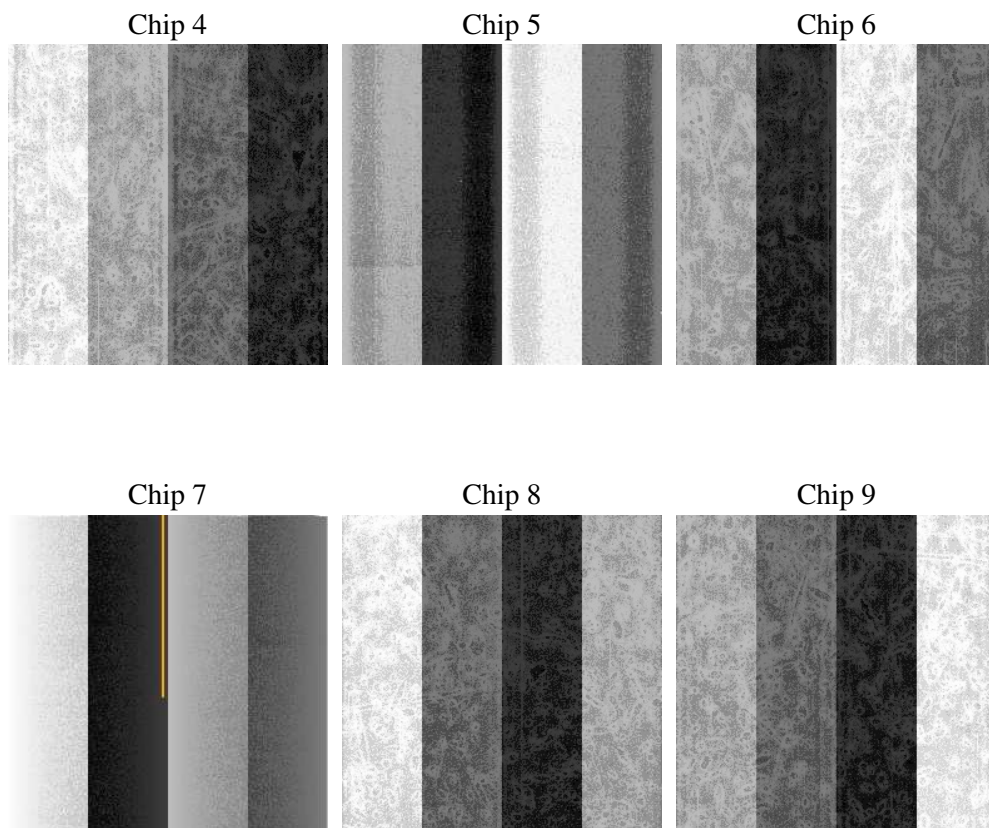
2 OBI

2.1 OBI

2.1.1 Images



2.1.2 Bias



2.1.3 Parameters

obi_num	0
ascdsver	7.6.9
caldsver	3.2.3
date	2006-11-08T03:24:09
revision	2

sched_exp_time	0.0
ontime	5078.678128168
ontime4	1960.8276905417
ontime5	5441.6663456112
ontime6	2139.0848004222
ontime7	5078.678128168
ontime8	2207.1465604752
ontime9	2113.1563808024
l1events	1419044

2.1.4 Events

	ccd 4	ccd 5	ccd 6	ccd 7	ccd 8	ccd 9
level 1 events	146831	377865	170044	385324	177552	161428
rejected events	17996	49938	18802	38829	21041	18278
rejected %	12%	13%	11%	10%	11%	11%

	ccd 4	ccd 5	ccd 6	ccd 7	ccd 8	ccd 9
grade 0 events	73155	47346	82868	67791	86724	78510
	49%	12%	48%	17%	48%	48%
grade 1 events	431	352	414	186	468	431
	0%	0%	0%	0%	0%	0%
grade 2 events	22766	153677	26001	102111	27850	25400
	15%	40%	15%	26%	15%	15%
grade 3 events	7943	12145	9378	27222	9762	8791
	5%	3%	5%	7%	5%	5%
grade 4 events	7953	11731	9299	26680	9780	8941
	5%	3%	5%	6%	5%	5%
grade 5 events	1199	6285	1425	5653	1556	1371
	0%	1%	0%	1%	0%	0%
grade 6 events	17217	103319	23912	123013	22694	21713
	11%	27%	14%	31%	12%	13%
grade 7 events	16167	43010	16747	32668	18718	16271
	11%	11%	9%	8%	10%	10%

2.2 Compared Parameters

Parameter	Planned	Actual	Parameter	Planned	Actual
Instrument	ACIS	ACIS	Obspar format version number	6	6
Detector	ACIS-456789	ACIS-456789	Obspar file type	PREDICTED	ACTUAL
Grating	NONE	NONE	Obspar update status	NONE	UPDATED
Data mode	FAINT	FAINT	On-chip summing requested	N	N
Observation mode	SECONDARY	SECONDARY	Subarray requested	NONE	NONE
Pointing RA	0	104.0285694044773	Alternating exposures requested	N	N
Pointing Dec	0	-40.01852585179628	Primary exposure time	0.000000	3.2
Pointing Roll	0.0	287.1249694663452			
SIM focus pos (mm)	-0.684267	-0.6828225247311905			
SIM defocus (mm)	0	0.8505141146731063			
SIM translation stage pos (mm)	-190.132523	250.466033080201			
SIM translation stage offset (mm)	0	-0.01005468664627074			
Observation start time	100741363.09	100741362.32159			
Observation start date	2001-03-11T23:42:43	2001-03-11T23:42:42			
Observation end time	100764866.341	100764865.5725			
Observation end date	2001-03-12T06:14:26	2001-03-12T06:14:25			
Read mode	TIMED	TIMED			

2.3 Aspect

2.4 Star Slots

2.5 FID Slots

A Summary

A.1 Status

V&V Scientist	Jen Lauer
V&V Date (YYYY-MM-DD)	2006.11.08
V&V Edition	1
V&V Disposition and Status	OK
V&V Charge Time	5.07282579

A.2 Comments

The ACIS focal plane temperature was above calibration limmits for the last 1 ksec of the observation.