

# V&V Reference Report

## L2 ASCDS Version : 7.6.9

Observation 61573 - L2 Version 001  
Chandra X-Ray Center

L2 Processing Date : Dec 8 2006

## Contents

<b>1</b>	<b>Front</b>	<b>2</b>
<b>2</b>	<b>OBI</b>	<b>3</b>
2.1	OBI . . . . .	3
2.1.1	Images . . . . .	3
2.1.2	Bias . . . . .	3
2.1.3	Parameters . . . . .	4
2.1.4	Events . . . . .	4
2.2	Compared Parameters . . . . .	5
2.3	Aspect . . . . .	6
2.4	Star Slots . . . . .	8
2.5	FID Slots . . . . .	8
<b>A</b>	<b>Summary</b>	<b>9</b>
A.1	Status . . . . .	9
A.2	Comments . . . . .	9

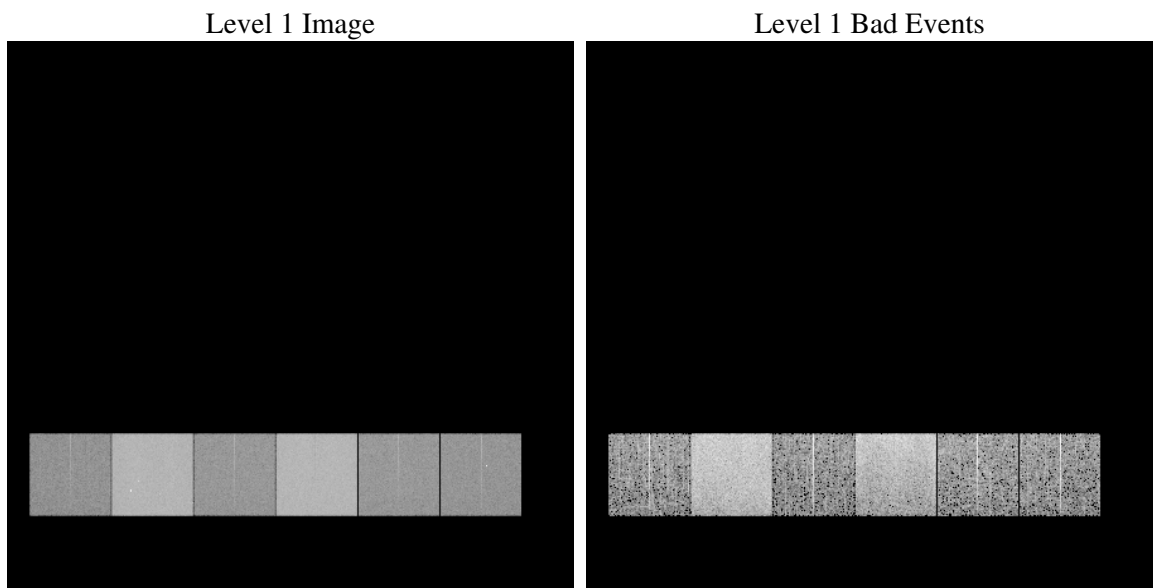
# 1 Front

seq_num	&#160
obs_id	61573
title	ACIS-456789 diagnostics
observer	CHANDRA engineering request/realtime commanding
object	&#160
dtcycle	0
cycle	P
ra_targ	0.0
dec_targ	0.0
ra_nom	349.97134587878
dec_nom	30.014210788158
roll_nom	117.42767412202
revision	2
ontime	5467.0832884908
livetime	5397.8557880096
ontime4	2119.2522639781
ontime5	5898.1721123457
ontime6	2316.91442433
ontime7	5467.0832884908
ontime8	2346.1660635322
ontime9	2239.0065836459
l2events	1206758

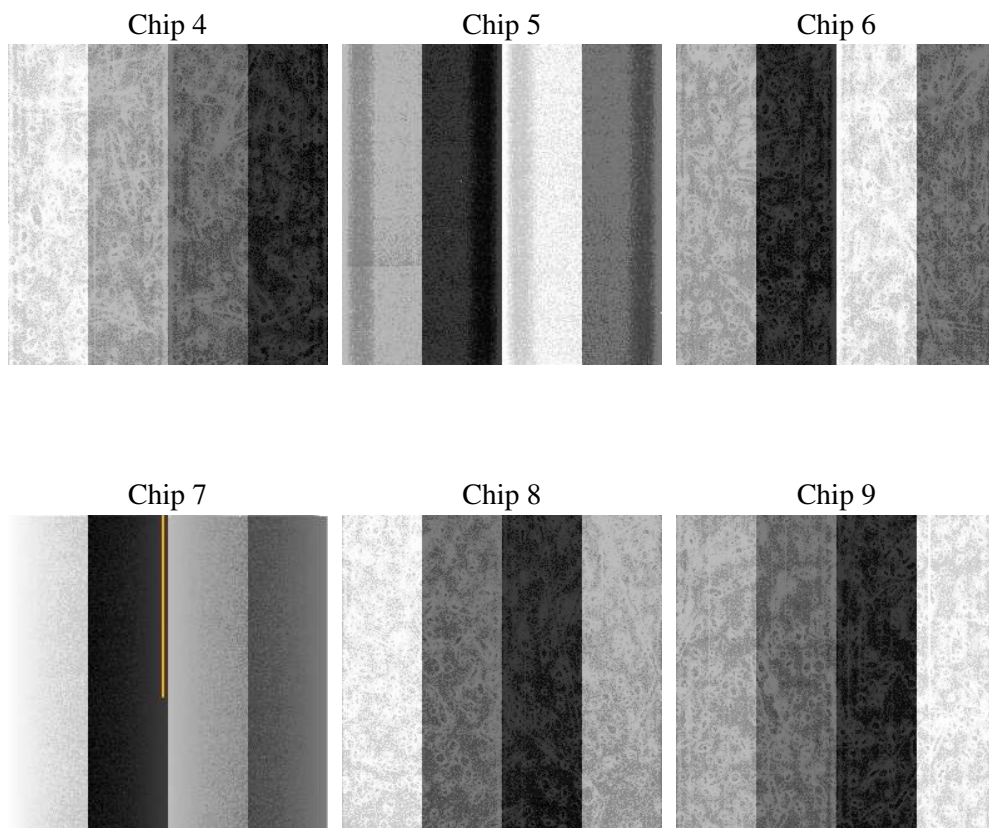
## 2 OBI

### 2.1 OBI

#### 2.1.1 Images



#### 2.1.2 Bias



### 2.1.3 Parameters

obi_num	0
ascdsver	7.6.9
caldsver	3.2.4
date	2006-12-08T17:39:25
revision	2

sched_exp_time	0.0
ontime	5467.5923656225
ontime4	2119.6382211149
ontime5	5898.6401494741
ontime6	2317.34142147
ontime7	5467.5923656225
ontime8	2346.5109806657
ontime9	2239.556700781
l1events	1428123

### 2.1.4 Events

	ccd 4	ccd 5	ccd 6	ccd 7	ccd 8	ccd 9
level 1 events	149927	378565	173050	387881	176450	162250
rejected events	19555	51172	18085	40541	20317	18460
rejected %	13%	13%	10%	10%	11%	11%

	ccd 4	ccd 5	ccd 6	ccd 7	ccd 8	ccd 9
grade 0 events	73656	42963	84836	65823	86313	78791
	49%	11%	49%	16%	48%	48%
grade 1 events	406	127	426	147	441	469
	0%	0%	0%	0%	0%	0%
grade 2 events	23248	155716	26731	103505	27275	25531
	15%	41%	15%	26%	15%	15%
grade 3 events	8003	11771	9449	26668	9822	8887
	5%	3%	5%	6%	5%	5%
grade 4 events	8057	11518	9600	25968	9775	8915
	5%	3%	5%	6%	5%	5%
grade 5 events	1211	6081	1355	5777	1528	1369
	0%	1%	0%	1%	0%	0%
grade 6 events	17408	105425	24349	125376	22948	21666
	11%	27%	14%	32%	13%	13%
grade 7 events	17938	44964	16304	34617	18348	16622
	11%	11%	9%	8%	10%	10%

## 2.2 Compared Parameters

Parameter	Planned	Actual	Parameter	Planned	Actual
Instrument	ACIS	ACIS	Obspar format version number	6	6
Detector	ACIS-456789	ACIS-456789	Obspar file type	PREDICTED	ACTUAL
Grating	NONE	NONE	Obspar update status	NONE	UPDATED
Data mode	FAINT	FAINT	On-chip summing requested	N	N
Observation mode	SECONDARY	SECONDARY	Subarray requested	NONE	NONE
Pointing RA	0	349.9713458787849	Alternating exposures requested	N	N
Pointing Dec	0	30.01421078815832	Primary exposure time	0.000000	3.2
Pointing Roll	0.0	117.4276741220165			
SIM focus pos (mm)	-0.684267	-0.6828225247311905			
SIM defocus (mm)	0	0.8505141146731063			
SIM translation stage pos (mm)	-190.132523	250.466033080201			
SIM translation stage offset (mm)	0	-0.01005468664627074			
Observation start time	109880837.445	109880836.67653			
Observation start date	2001-06-25T18:27:17	2001-06-25T18:27:16			
Observation end time	109891191.995	109891191.22693			
Observation end date	2001-06-25T21:19:52	2001-06-25T21:19:51			
Read mode	TIMED	TIMED			

## 2.3 Aspect



## **2.4 Star Slots**

## **2.5 FID Slots**



## A Summary

### A.1 Status

V&V Scientist	Beth Sundheim
V&V Date (YYYY-MM-DD)	2006.12.08
V&V Edition	1
V&V Disposition and Status	OK
V&V Charge Time	5.46708328

### A.2 Comments