

# V&V Reference Report

## L2 ASCDS Version : 7.6.9

Observation 61473 - L2 Version 001  
Chandra X-Ray Center

L2 Processing Date : Dec 31 2006

## Contents

<b>1</b>	<b>Front</b>	<b>2</b>
<b>2</b>	<b>OBI</b>	<b>3</b>
2.1	OBI . . . . .	3
2.1.1	Images . . . . .	3
2.1.2	Bias . . . . .	3
2.1.3	Parameters . . . . .	4
2.1.4	Events . . . . .	4
2.2	Compared Parameters . . . . .	5
2.3	Aspect . . . . .	6
2.4	Star Slots . . . . .	8
2.5	FID Slots . . . . .	8
<b>A</b>	<b>Summary</b>	<b>9</b>
A.1	Status . . . . .	9
A.2	Comments . . . . .	9

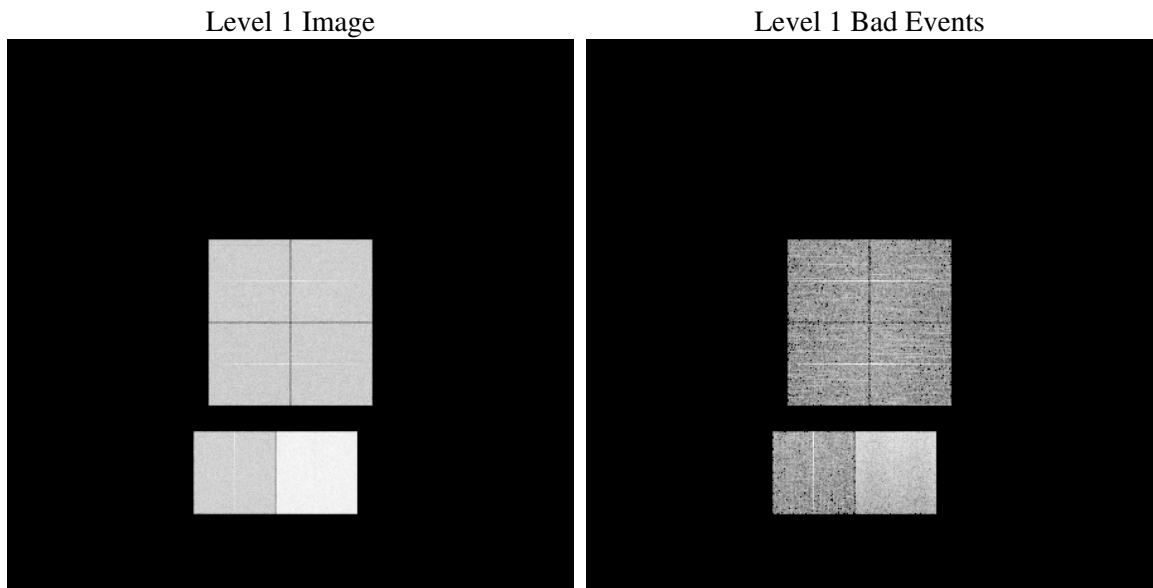
# 1 Front

seq_num	&#160
obs_id	61473
title	ACIS-012367 diagnostics
observer	CHANDRA engineering request/realtime commanding
object	&#160
dtcycle	0
cycle	P
ra_targ	0.0
dec_targ	0.0
ra_nom	305.02969917878
dec_nom	-35.015135448304
roll_nom	295.34804410891
revision	2
ontime	7783.4750531763
livetime	7684.916005407
ontime0	2989.1408346146
ontime1	3058.1251380891
ontime2	2840.1353739351
ontime3	2886.3507759422
ontime6	3125.3872156143
ontime7	7783.4750531763
l2events	1290447

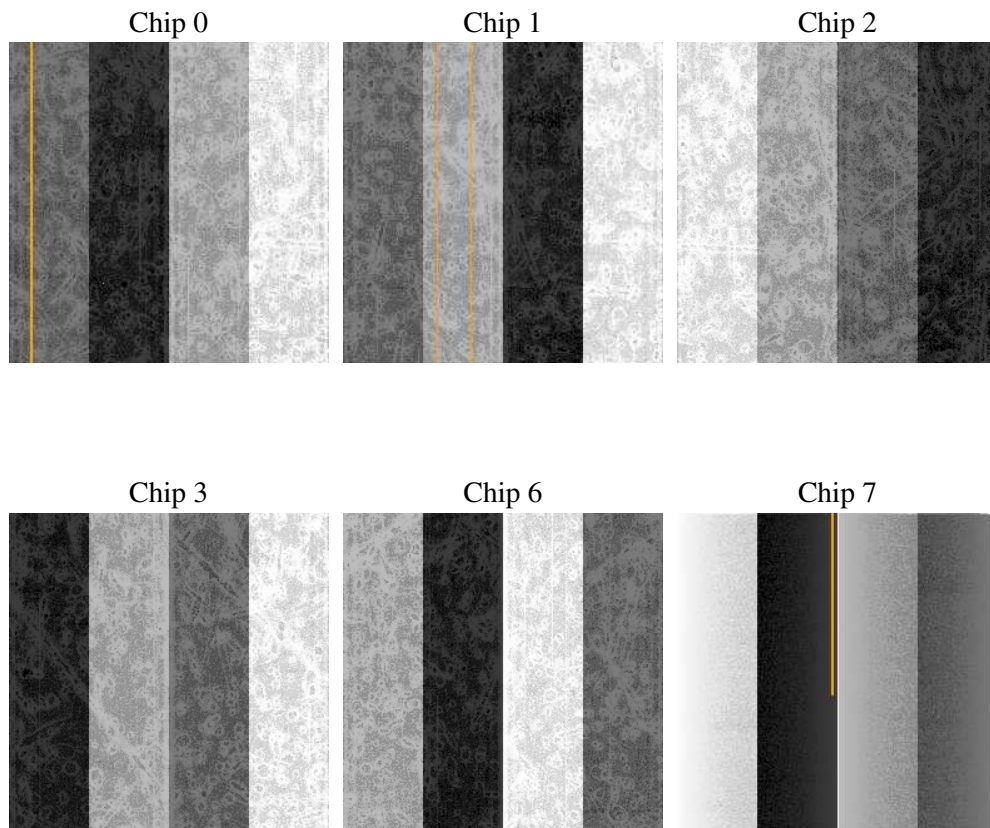
## 2 OBI

### 2.1 OBI

#### 2.1.1 Images



#### 2.1.2 Bias



### 2.1.3 Parameters

obi_num	0
ascdsver	7.6.9
caldsver	3.2.4
date	2006-12-31T14:07:34
revision	2

sched_exp_time	0.0
ontime	7849.7080520838
ontime0	3014.1639431417
ontime1	3085.4663147777
ontime2	2861.8353624791
ontime3	2913.6919526309
ontime6	3150.2872041464
ontime7	7849.7080520838
l1events	1542351

### 2.1.4 Events

	ccd 0	ccd 1	ccd 2	ccd 3	ccd 6	ccd 7
level 1 events	200572	206093	193319	198276	219080	525011
rejected events	25000	25693	25435	26744	27385	68024
rejected %	12%	12%	13%	13%	12%	12%

	ccd 0	ccd 1	ccd 2	ccd 3	ccd 6	ccd 7
grade 0 events	97031	99630	92525	96419	103971	78444
	48%	48%	47%	48%	47%	14%
grade 1 events	486	498	454	454	504	197
	0%	0%	0%	0%	0%	0%
grade 2 events	31795	33043	31336	31297	35411	143122
	15%	16%	16%	15%	16%	27%
grade 3 events	11011	11339	10406	10597	11464	33003
	5%	5%	5%	5%	5%	6%
grade 4 events	10839	11209	10222	10698	11308	32030
	5%	5%	5%	5%	5%	6%
grade 5 events	1565	1720	1491	1693	1861	8369
	0%	0%	0%	0%	0%	1%
grade 6 events	26417	26894	24743	24283	31144	174329
	13%	13%	12%	12%	14%	33%
grade 7 events	21428	21760	22142	22835	23417	55517
	10%	10%	11%	11%	10%	10%

## 2.2 Compared Parameters

Parameter	Planned	Actual	Parameter	Planned	Actual
Instrument	ACIS	ACIS	Obspar format version number	6	6
Detector	ACIS-012367	ACIS-012367	Obspar file type	PREDICTED	ACTUAL
Grating	NONE	NONE	Obspar update status	NONE	UPDATED
Data mode	FAINT	FAINT	On-chip summing requested	N	N
Observation mode	SECONDARY	SECONDARY	Subarray requested	NONE	NONE
Pointing RA	0	305.0296991787826	Alternating exposures requested	N	N
Pointing Dec	0	-35.01513544830443	Primary exposure time	0.000000	3.2
Pointing Roll	0.0	295.3480441089145			
SIM focus pos (mm)	-0.782348	-0.6828225247311905			
SIM defocus (mm)	0	0.8505141146731063			
SIM translation stage pos (mm)	-233.592463	250.466033080201			
SIM translation stage offset (mm)	0	-0.01005468664627074			
Observation start time	116766787.716	116766786.94722			
Observation start date	2001-09-13T11:13:08	2001-09-13T11:13:06			
Observation end time	116789054.817	116789054.0481			
Observation end date	2001-09-13T17:24:15	2001-09-13T17:24:14			
Read mode	TIMED	TIMED			

## 2.3 Aspect



## **2.4 Star Slots**

## **2.5 FID Slots**



# A Summary

## A.1 Status

V&V Scientist	Beth Sundheim
V&V Date (YYYY-MM-DD)	2007.01.04
V&V Edition	1
V&V Disposition and Status	OK
V&V Charge Time	7.78347505

## A.2 Comments

Focal plane temperature is warmer than -118.7 C degrees during the entire observation. This temperature is the upper limit of the verified ACIS calibration for the front-illuminated chips.