

# V&V Reference Report

## L2 ASCDS Version : 8.4.5

Observation 62876 - L2 Version 5  
Chandra X-Ray Center

L2 Processing Date : Aug 30 2012

## Contents

<b>1</b>	<b>Front</b>	<b>2</b>
<b>2</b>	<b>OBI</b>	<b>3</b>
2.1	OBI . . . . .	3
2.1.1	Images . . . . .	3
2.1.2	Bias . . . . .	3
2.1.3	Parameters . . . . .	4
2.1.4	Events . . . . .	4
2.2	Compared Parameters . . . . .	5
2.3	Star Slots . . . . .	6
2.4	FID Slots . . . . .	6
<b>A</b>	<b>Summary</b>	<b>7</b>
A.1	Status . . . . .	7
A.2	Comments . . . . .	7

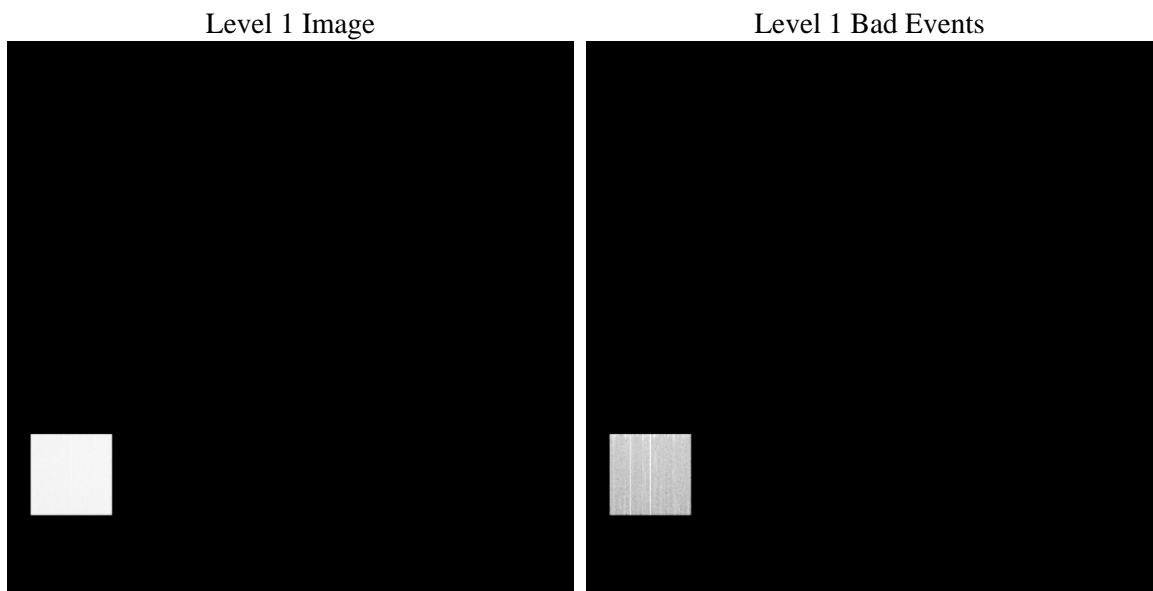
# 1 Front

seq_num	&#160	Sequence number
obs_id	62876	Observation id
title	ACIS-4 diagnostics; squeegee VII; CAP 625B	Proposal title
observer	CHANDRA engineering request/realtime commanding	Principal investig
object	&#160	Source name
dtcycle	0	&#160
cycle	P	events from which exps? Prim/Second/Both
ra_targ	0.0	Observer's specified target RA [deg]
dec_targ	0.0	Observer's specified target Dec [deg]
ra_nom	52.273058845528	Nominal RA [deg]
dec_nom	31.326869899566	Nominal Dec [deg]
roll_nom	95.576528160095	Nominal Roll [deg]
revision	5	Processing version of data
ontime	30768.782255217	Sum of GTIs [s]
livetime	30082.892310537	Livetime [s]
ontime4	30768.782255217	Sum of GTIs [s]
l2events	1976727	Number of level 2 events

## 2 OBI

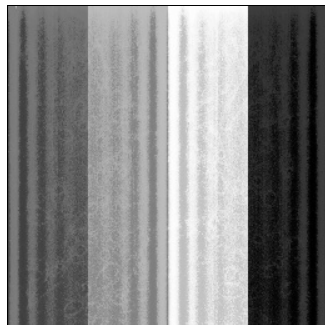
### 2.1 OBI

#### 2.1.1 Images



#### 2.1.2 Bias

Chip 4



### 2.1.3 Parameters

obi_num	0	Obi number	sched_exp_time	0.0	[s] Scheduled observation exposure time
ascdsver	8.4.5	Processing system revision	ontime	30768.782255217	Sum of GTIs [s]
caldbver	4.5.1.1	&#160	ontime4	30768.782255217	Sum of GTIs [s]
date	2012-08-30T12:00:53	Date and time of file creation	l1events	2504071	Number of level 1 events
revision	5	Processing version of data			

### 2.1.4 Events

	<b>ccd 4</b>
level 1 events	2504071
rejected events	172803
rejected %	6%

	<b>ccd 4</b>
grade 0 events	1679103
	67%
grade 1 events	8135
	0%
grade 2 events	326945
	13%
grade 3 events	110629
	4%
grade 4 events	109139
	4%
grade 5 events	10495
	0%
grade 6 events	105595
	4%
grade 7 events	154030
	6%

## 2.2 Compared Parameters

Parameter	Planned	Actual	Parameter	Planned	Actual
Instrument	ACIS	ACIS	Obspar format version number	7	7
Detector	ACIS-4	ACIS-4	Obspar file type	PREDICTED	ACTUAL
Grating	NONE	NONE	Obspar update status	NONE	UPDATED
Data mode	FAINT	FAINT	On-chip summing requested	N	N
Observation mode	SECONDARY	SECONDARY	Subarray requested	NONE	NONE
[deg] Pointing RA	0	52.27305884552758	Alternating exposures requested	N	N
[deg] Pointing Dec	0	31.32686989956603	[s] Primary exposure time	0.000000	1.8
[deg] Pointing Roll	0.0	95.57652816009498			
[mm] SIM focus pos	-0.684267	-0.7809083437167272			
[mm] SIM defocus	0	0.7524282956875696			
[mm] SIM translation stage pos	-190.132523	250.466033080201			
[mm] SIM translation stage offset	0	-0.01005468664627074			
[s] Observation start time (MET)	79900840.899	79900840.130439			
Observation start date	2000-07-13T18:40:41	2000-07-13T18:40:40			
[s] Observation end time (MET)	79935809.8	79935809.03173099			
Observation end date	2000-07-14T04:23:30	2000-07-14T04:23:29			
Read mode	TIMED	TIMED			

## **2.3 Star Slots**

## **2.4 FID Slots**

## A Summary

### A.1 Status

V&V Scientist	Jen Lauer
V&V Date (YYYY-MM-DD)	2012.09.04
V&V Edition	1
V&V Disposition and Status	OK
V&V Charge Time	30.768782255217

### A.2 Comments

Squeegy mode diagnostic observation; bias map is non-standard.