

V&V Reference Report

L2 ASCDS Version : 8.1.2

Observation 62202 - L2 Version 3

Chandra X-Ray Center

L2 Processing Date : Dec 5 2009

Contents

1	Front	2
2	OBI	3
2.1	OBI	3
2.1.1	Images	3
2.1.2	Bias	3
2.1.3	Parameters	4
2.1.4	Events	4
2.2	Compared Parameters	5
2.3	Star Slots	6
2.4	FID Slots	6
A	Summary	7
A.1	Status	7
A.2	Comments	7

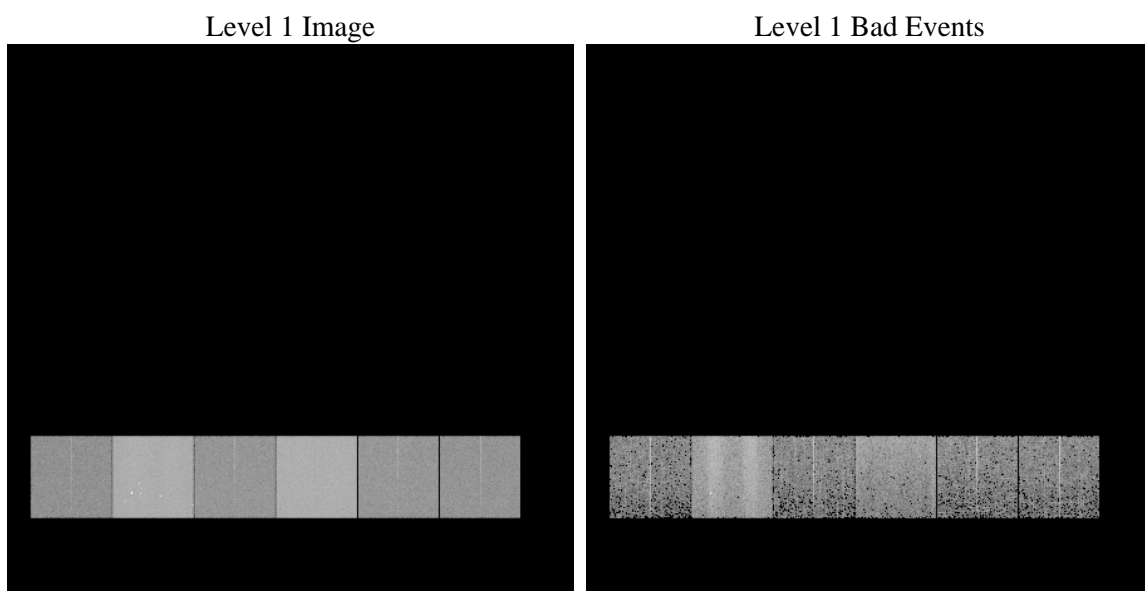
1 Front

seq_num	 	Sequence number
obs_id	62202	Observation id
title	ACIS-456789 diagnostics	Proposal title
observer	CHANDRA engineering request/realtime commanding	Principal investig
object	 	Source name
dtcycle	0	
cycle	P	events from which exps? Prim/Second/Both
ra_targ	0.0	Observer's specified target RA
dec_targ	0.0	Observer's specified target Dec
ra_nom	206.79409131427	Nominal RA
dec_nom	-32.871619954552	Nominal Dec
roll_nom	67.814010654731	Nominal Roll
revision	3	Processing version of data
ontime	2968.9500194788	Sum of GTIs [s]
livetime	2931.3553866451	Livetime [s]
ontime4	1121.3984956369	Sum of GTIs [s]
ontime5	3156.759270981	Sum of GTIs [s]
ontime6	1273.7273459956	Sum of GTIs [s]
ontime7	2968.9500194788	Sum of GTIs [s]
ontime8	1273.7272662073	Sum of GTIs [s]
ontime9	1221.8706560358	Sum of GTIs [s]
l2events	899768	Number of level 2 events

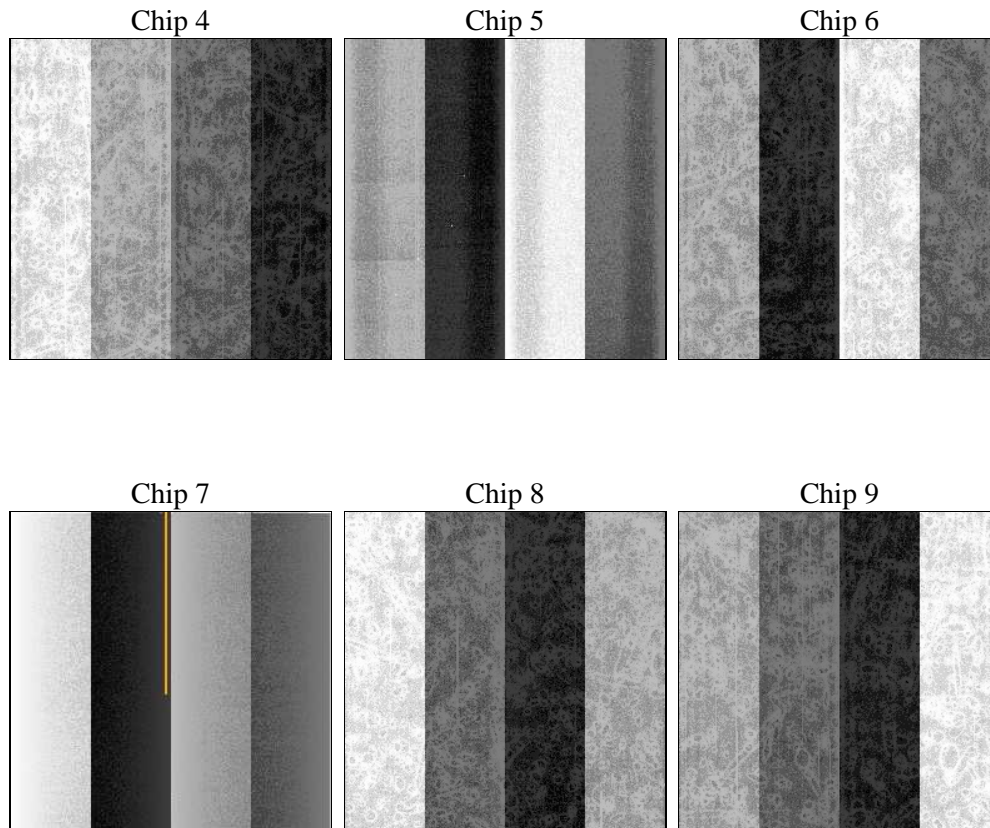
2 OBI

2.1 OBI

2.1.1 Images



2.1.2 Bias



2.1.3 Parameters

obi_num	0	Obi number		
ascdsver	8.1.2	ASCDS version number	sched_exp_time	0.0
caldbver	4.1.4	 		Scheduled observation exposure time
date	2009-12-05T17:08:19	Date and time of file creation	ontime	2968.9500194788
revision	3	Processing version of data	ontime4	1121.3984956369
			ontime5	3156.759270981
			ontime6	1273.7273459956
			ontime7	2968.9500194788
			ontime8	1273.7272662073
			ontime9	1221.8706560358
			l1events	1059886
				Sum of GTIs [s]
				Sum of GTIs [s]
				Sum of GTIs [s]
				Sum of GTIs [s]
				Sum of GTIs [s]
				Sum of GTIs [s]
				Sum of GTIs [s]
				Number of level 1 events

2.1.4 Events

	ccd 4	ccd 5	ccd 6	ccd 7	ccd 8	ccd 9		ccd 4	ccd 5	ccd 6	ccd 7	ccd 8	ccd 9
level 1 events	104926	288091	127184	292618	129457	117610	grade 0 events	19880	26800	29973	48619	38844	30394
rejected events	16652	47286	17920	27966	18092	17050		18%	9%	23%	16%	30%	25%
rejected %	15%	16%	14%	9%	13%	14%	grade 1 events	73	271	118	106	157	132
								0%	0%	0%	0%	0%	0%
							grade 2 events	48306	93506	51534	73853	44657	44802
								46%	32%	40%	25%	34%	38%
							grade 3 events	1979	12518	3106	23092	4073	3156
								1%	4%	2%	7%	3%	2%
							grade 4 events	2034	10996	3151	20866	4190	3173
								1%	3%	2%	7%	3%	2%
							grade 5 events	829	5052	1019	4047	1141	1066
								0%	1%	0%	1%	0%	0%
							grade 6 events	16075	96985	21500	98546	19601	19035
								15%	33%	16%	33%	15%	16%
							grade 7 events	15750	41963	16783	23489	16794	15852
								15%	14%	13%	8%	12%	13%

2.2 Compared Parameters

Parameter	Planned	Actual	Parameter	Planned	Actual
Instrument	ACIS	ACIS	Obspar format version number	6	6
Detector	ACIS-456789	ACIS-456789	Obspar file type	PREDICTED	ACTUAL
Grating	NONE	NONE	Obspar update status	NONE	UPDATED
Data mode	FAINT	FAINT	On-chip summing requested	N	N
Observation mode	SECONDARY	SECONDARY	Subarray requested	NONE	NONE
Pointing RA	0	206.7940913142706	Alternating exposures requested	N	N
Pointing Dec	0	-32.87161995455237	Primary exposure time	0.000000	3.2
Pointing Roll	0.0	67.81401065473112			
SIM focus pos (mm)	-0.684267	-0.6828225247311905			
SIM defocus (mm)	0	0.8505141146731063			
SIM translation stage pos (mm)	-190.132523	250.466033080201			
SIM translation stage offset (mm)	0	-0.01005468664627074			
Observation start time	65329104.111	65329103.342354			
Observation start date	2000-01-27T02:58:24	2000-01-27T02:58:23			
Observation end time	65371963.462	65371962.693913			
Observation end date	2000-01-27T14:52:43	2000-01-27T14:52:42			
Read mode	TIMED	TIMED			

2.3 Star Slots

2.4 FID Slots

A Summary

A.1 Status

V&V Scientist	Beth Sundheim
V&V Date (YYYY-MM-DD)	2010.01.28
V&V Edition	1
V&V Disposition and Status	OK
V&V Charge Time	2.9689500194788

A.2 Comments

The focal plane temperature is approximately -110C during this observation. This reprocessing of the data applies no CTI correction because none is available for this temperature at present.

The ACIS CTI correction has not been calibrated at this temperature, because it was early in the mission, and ACIS had not yet been lowered to the standard -119.7 C. Both front and back illuminated chips are affected. However a T_GAIN correction has been applied to the BI chips (ACIS-5 and ACIS-7) data included here.