

V&V Reference Report

L2 ASCDS Version : 8.4.5

Observation 62193 - L2 Version 4
Chandra X-Ray Center

L2 Processing Date : Aug 21 2012

Contents

1	Front	2
2	OBI	3
2.1	OBI	3
2.1.1	Images	3
2.1.2	Bias	3
2.1.3	Parameters	4
2.1.4	Events	4
2.2	Compared Parameters	5
2.3	Star Slots	6
2.4	FID Slots	6
A	Summary	7
A.1	Status	7
A.2	Comments	7

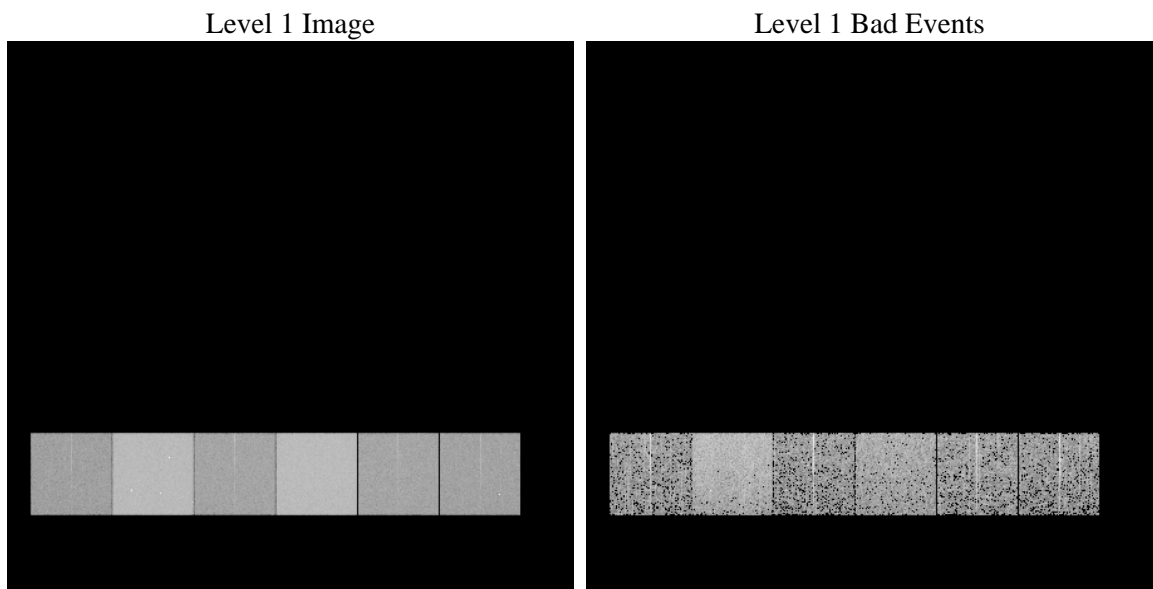
1 Front

seq_num	 	Sequence number
obs_id	62193	Observation id
title	ACIS-456789 diagnostics	Proposal title
observer	CHANDRA engineering request/realtime commanding	Principal investig
object	 	Source name
dtcycle	0	
cycle	P	events from which exps? Prim/Second/Both
ra_targ	0.0	Observer's specified target RA [deg]
dec_targ	0.0	Observer's specified target Dec [deg]
ra_nom	110.1099544107	Nominal RA [deg]
dec_nom	-31.432856913626	Nominal Dec [deg]
roll_nom	330.17427337204	Nominal Roll [deg]
revision	4	Processing version of data
ontime	2887.4590834603	Sum of GTIs [s]
livetime	2850.8963379264	Livetime [s]
ontime4	1124.4631220773	Sum of GTIs [s]
ontime5	3092.6028317809	Sum of GTIs [s]
ontime6	1257.3046724796	Sum of GTIs [s]
ontime7	2887.4590834603	Sum of GTIs [s]
ontime8	1263.8688025549	Sum of GTIs [s]
ontime9	1182.6376323327	Sum of GTIs [s]
l2events	919827	Number of level 2 events

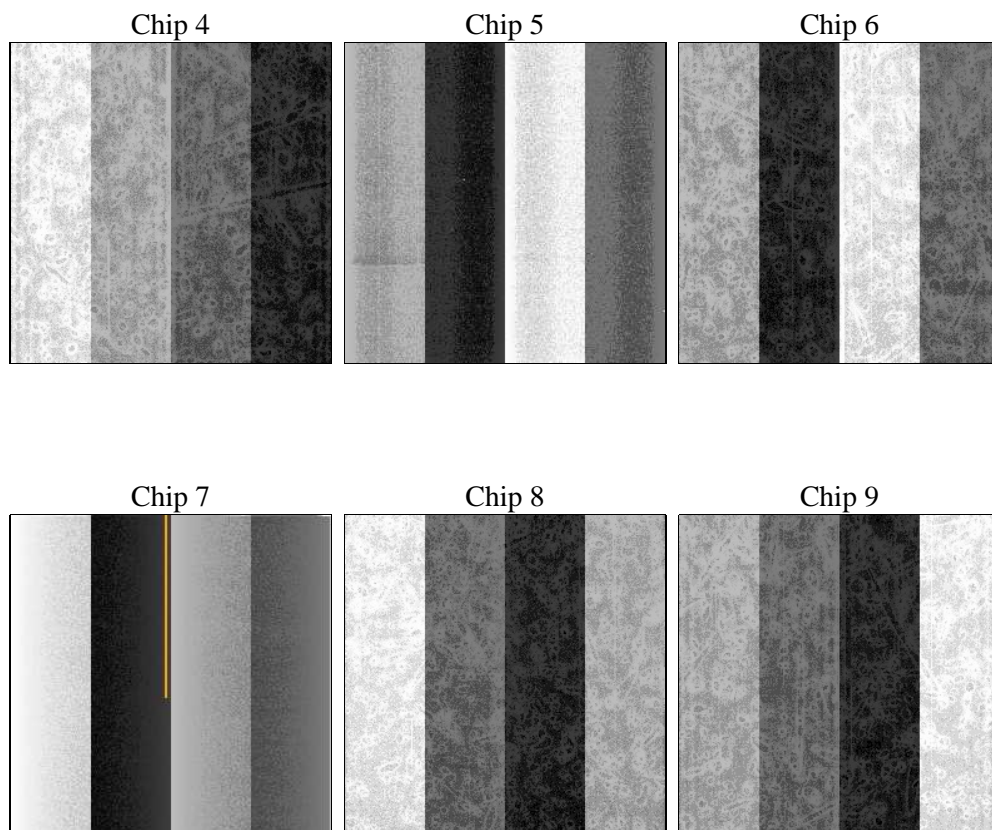
2 OBI

2.1 OBI

2.1.1 Images



2.1.2 Bias



2.1.3 Parameters

obi_num	0	Obi number	sched_exp_time	0.0	[s] Scheduled observation exposure time
ascdsver	8.4.5	Processing system revision	ontime	2887.4590834603	Sum of GTIs [s]
caldsver	4.5.1.1	 	ontime4	1124.4631220773	Sum of GTIs [s]
date	2012-08-22T01:36:13	Date and time of file creation	ontime5	3092.6028317809	Sum of GTIs [s]
revision	4	Processing version of data	ontime6	1257.3046724796	Sum of GTIs [s]
			ontime7	2887.4590834603	Sum of GTIs [s]
			ontime8	1263.8688025549	Sum of GTIs [s]
			ontime9	1182.6376323327	Sum of GTIs [s]
			l1events	1057838	Number of level 1 events

2.1.4 Events

	ccd 4	ccd 5	ccd 6	ccd 7	ccd 8	ccd 9		ccd 4	ccd 5	ccd 6	ccd 7	ccd 8	ccd 9
level 1 events	110503	278265	130402	286287	132368	120013	grade 0 events	54892	67277	64335	69679	64894	58418
rejected events	13600	26269	13040	17486	14461	13111		49%	24%	49%	24%	49%	48%
rejected %	12%	9%	9%	6%	10%	10%	grade 1 events	377	274	386	226	407	366
								0%	0%	0%	0%	0%	0%
							grade 2 events	16896	84860	20237	59740	20784	19384
								15%	30%	15%	20%	15%	16%
							grade 3 events	5929	17832	7187	27476	7360	6639
								5%	6%	5%	9%	5%	5%
							grade 4 events	6061	17556	7253	27422	7359	6466
								5%	6%	5%	9%	5%	5%
							grade 5 events	868	5383	1023	3948	1117	980
								0%	1%	0%	1%	0%	0%
							grade 6 events	13125	64751	18350	84484	17510	15995
								11%	23%	14%	29%	13%	13%
							grade 7 events	12355	20332	11631	13312	12937	11765
								11%	7%	8%	4%	9%	9%

2.2 Compared Parameters

Parameter	Planned	Actual
Instrument	ACIS	ACIS
Detector	ACIS-456789	ACIS-456789
Grating	NONE	NONE
Data mode	FAINT	FAINT
Observation mode	SECONDARY	SECONDARY
[deg] Pointing RA	0	110.1099544106998
[deg] Pointing Dec	0	-31.43285691362594
[deg] Pointing Roll	0.0	330.1742733720355
[mm] SIM focus pos	-0.684267	-1.428180813131781
[mm] SIM defocus	0	0.1051558262725154
[mm] SIM translation stage pos	-190.132523	250.466033080201
[mm] SIM translation stage offset	0	-0.01005468664627074
[s] Observation start time (MET)	65786444.777519	65786444.008992
Observation start date	2000-02-01T10:00:45	2000-02-01T10:00:44
[s] Observation end time (MET)	65832664.079206	65832663.310674
Observation end date	2000-02-01T22:51:04	2000-02-01T22:51:03
Read mode	TIMED	TIMED

Parameter	Planned	Actual
Obspar format version number	7	7
Obspar file type	PREDICTED	ACTUAL
Obspar update status	NONE	UPDATED
On-chip summing requested	N	N
Subarray requested	NONE	NONE
Alternating exposures requested	N	N
[s] Primary exposure time	3.2	3.2

2.3 Star Slots

2.4 FID Slots

A Summary

A.1 Status

V&V Scientist	Beth Sundheim
V&V Date (YYYY-MM-DD)	2012.08.22
V&V Edition	1
V&V Disposition and Status	OK
V&V Charge Time	2.8874590834603

A.2 Comments