

V&V Reference Report

L2 ASCDS Version : 8.4.5

Observation 62191 - L2 Version 4
Chandra X-Ray Center

L2 Processing Date : Aug 21 2012

Contents

1	Front	2
2	OBI	3
2.1	OBI	3
2.1.1	Images	3
2.1.2	Bias	3
2.1.3	Parameters	4
2.1.4	Events	4
2.2	Compared Parameters	5
2.3	Star Slots	6
2.4	FID Slots	6
A	Summary	7
A.1	Status	7
A.2	Comments	7

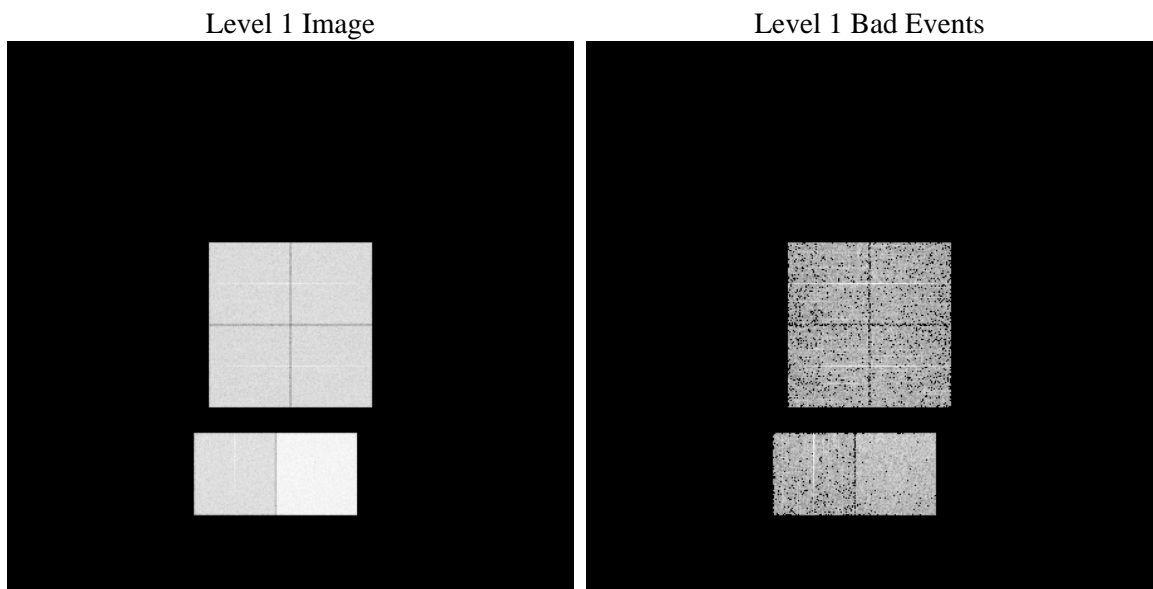
1 Front

seq_num	 	Sequence number
obs_id	62191	Observation id
title	ACIS-012367 diagnostics	Proposal title
observer	CHANDRA engineering request/realtime commanding	Principal investig
object	 	Source name
dtcycle	0	
cycle	P	events from which exps? Prim/Second/Both
ra_targ	0.0	Observer's specified target RA [deg]
dec_targ	0.0	Observer's specified target Dec [deg]
ra_nom	110.11084261701	Nominal RA [deg]
dec_nom	-31.43204832195	Nominal Dec [deg]
roll_nom	330.17634348678	Nominal Roll [deg]
revision	4	Processing version of data
ontime	3463.5218968615	Sum of GTIs [s]
livetime	3419.6646971209	Livetime [s]
ontime0	1395.7981033623	Sum of GTIs [s]
ontime1	1418.5263436139	Sum of GTIs [s]
ontime2	1327.8183432296	Sum of GTIs [s]
ontime3	1360.0645234287	Sum of GTIs [s]
ontime6	1506.1164539233	Sum of GTIs [s]
ontime7	3463.5218968615	Sum of GTIs [s]
l2events	920661	Number of level 2 events

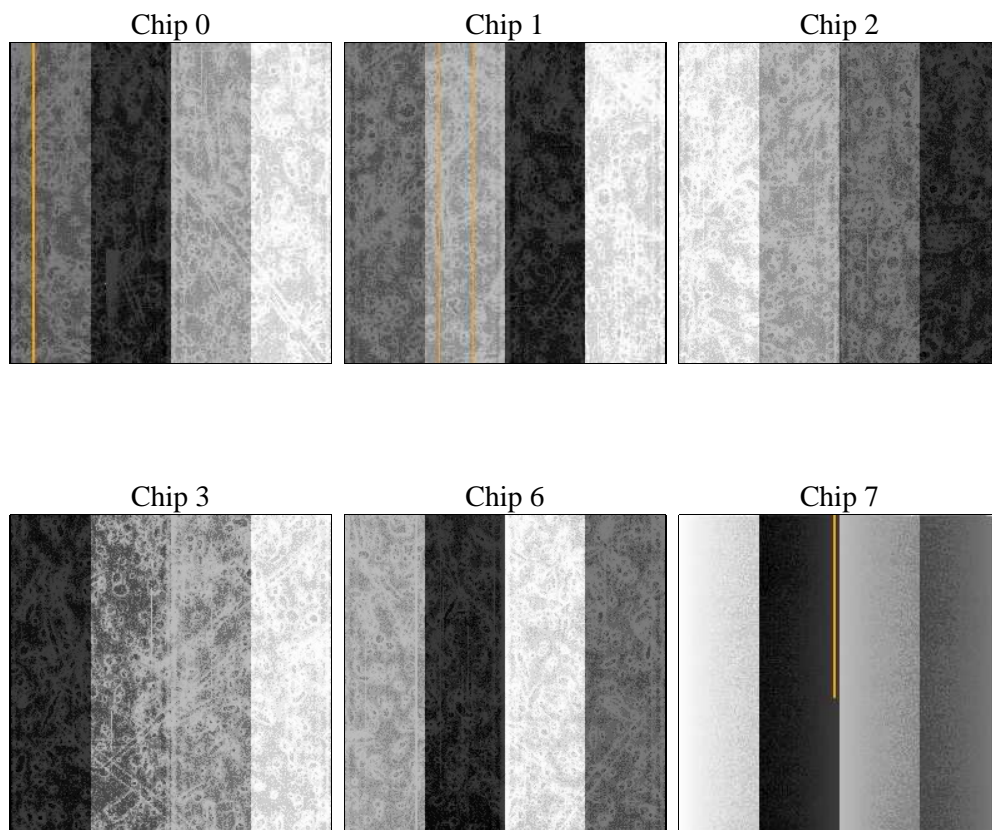
2 OBI

2.1 OBI

2.1.1 Images



2.1.2 Bias



2.1.3 Parameters

obi_num	0	Obi number	sched_exp_time	0.0	[s] Scheduled observation exposure time
ascdsver	8.4.5	Processing system revision	ontime	3463.5218968615	Sum of GTIs [s]
caldsver	4.5.1.1	 	ontime0	1395.7981033623	Sum of GTIs [s]
date	2012-08-22T01:40:55	Date and time of file creation	ontime1	1418.5263436139	Sum of GTIs [s]
revision	4	Processing version of data	ontime2	1327.8183432296	Sum of GTIs [s]
			ontime3	1360.0645234287	Sum of GTIs [s]
			ontime6	1506.1164539233	Sum of GTIs [s]
			ontime7	3463.5218968615	Sum of GTIs [s]
			l1events	1056926	Number of level 1 events

2.1.4 Events

	ccd 0	ccd 1	ccd 2	ccd 3	ccd 6	ccd 7		ccd 0	ccd 1	ccd 2	ccd 3	ccd 6	ccd 7
level 1 events	138922	140710	135048	137825	157853	346568	grade 0 events	68666	69784	66901	68678	77322	83913
rejected events	15045	14420	15052	15096	16650	22347		49%	49%	49%	49%	48%	24%
rejected %	10%	10%	11%	10%	10%	6%	grade 1 events	471	427	444	441	466	235
								0%	0%	0%	0%	0%	0%
							grade 2 events	21878	22289	21096	21560	24415	72501
								15%	15%	15%	15%	15%	20%
							grade 3 events	7940	7975	7683	7766	8882	33340
								5%	5%	5%	5%	5%	9%
							grade 4 events	7811	8192	7574	7772	8823	33298
								5%	5%	5%	5%	5%	9%
							grade 5 events	1025	1020	1036	1068	1227	4778
								0%	0%	0%	0%	0%	1%
							grade 6 events	18157	18621	17053	17255	22354	102251
								13%	13%	12%	12%	14%	29%
							grade 7 events	12974	12402	13261	13285	14364	16252
								9%	8%	9%	9%	9%	4%

2.2 Compared Parameters

Parameter	Planned	Actual
Instrument	ACIS	ACIS
Detector	ACIS-012367	ACIS-012367
Grating	NONE	NONE
Data mode	FAINT	FAINT
Observation mode	SECONDARY	SECONDARY
[deg] Pointing RA	0	110.1108426170076
[deg] Pointing Dec	0	-31.43204832194976
[deg] Pointing Roll	0.0	330.1763434867764
[mm] SIM focus pos	-0.782348	-1.428180813131781
[mm] SIM defocus	0	0.1051558262725154
[mm] SIM translation stage pos	-233.592463	250.466033080201
[mm] SIM translation stage offset	0	-0.01005468664627074
[s] Observation start time (MET)	65839964.129472	65839963.360939
Observation start date	2000-02-02T00:52:44	2000-02-02T00:52:43
[s] Observation end time (MET)	65847264.179737	65847263.411205
Observation end date	2000-02-02T02:54:24	2000-02-02T02:54:23
Read mode	TIMED	TIMED

Parameter	Planned	Actual
Obspar format version number	7	7
Obspar file type	PREDICTED	ACTUAL
Obspar update status	NONE	UPDATED
On-chip summing requested	N	N
Subarray requested	NONE	NONE
Alternating exposures requested	N	N
[s] Primary exposure time	3.2	3.2

2.3 Star Slots

2.4 FID Slots

A Summary

A.1 Status

V&V Scientist	Joy Nichols
V&V Date (YYYY-MM-DD)	2012.08.23
V&V Edition	1
V&V Disposition and Status	Repr+DD
V&V Charge Time	3.4635218968615

A.2 Comments

The bias map for CCD_ID = 0 suffers from anomalously high bias values in an 'exacto-knife'-shaped area of the bias file. Pixels in the event data that have been bias-corrected by one of the affected bias pixels may have an apparent energy shift. While the change in energy is expected to be small (~20 eV), it depends on many parameters that have not yet been fully explored for this bias anomaly. The bias map for CCD_ID = 0 will be recreated to remove this anomaly and the data will be reprocessed.