

V&V Reference Report

L2 ASCDS Version : 8.4.5

Observation 62187 - L2 Version 4
Chandra X-Ray Center

L2 Processing Date : Aug 21 2012

Contents

1	Front	2
2	OBI	3
2.1	OBI	3
2.1.1	Images	3
2.1.2	Bias	3
2.1.3	Parameters	4
2.1.4	Events	4
2.2	Compared Parameters	5
2.3	Star Slots	6
2.4	FID Slots	6
A	Summary	7
A.1	Status	7
A.2	Comments	7

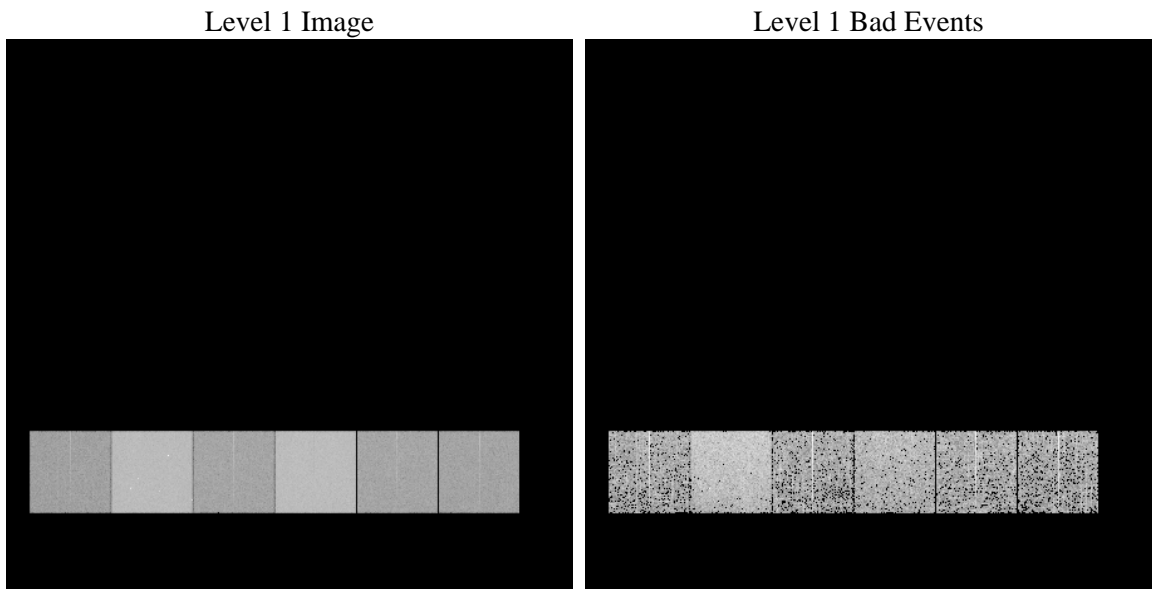
1 Front

seq_num	 	Sequence number
obs_id	62187	Observation id
title	ACIS-456789 diagnostics	Proposal title
observer	CHANDRA engineering request/realtime commanding	Principal investig
object	 	Source name
dtcycle	0	
cycle	P	events from which exps? Prim/Second/Both
ra_targ	0.0	Observer's specified target RA [deg]
dec_targ	0.0	Observer's specified target Dec [deg]
ra_nom	180.02006742842	Nominal RA [deg]
dec_nom	-64.970147355504	Nominal Dec [deg]
roll_nom	41.03200562893	Nominal Roll [deg]
revision	4	Processing version of data
ontime	2906.8567765653	Sum of GTIs [s]
livetime	2870.0484057614	Livetime [s]
ontime4	1111.6753756106	Sum of GTIs [s]
ontime5	3121.1092378646	Sum of GTIs [s]
ontime6	1241.3169459403	Sum of GTIs [s]
ontime7	2906.8567765653	Sum of GTIs [s]
ontime8	1254.2811059654	Sum of GTIs [s]
ontime9	1218.6296160296	Sum of GTIs [s]
l2events	921302	Number of level 2 events

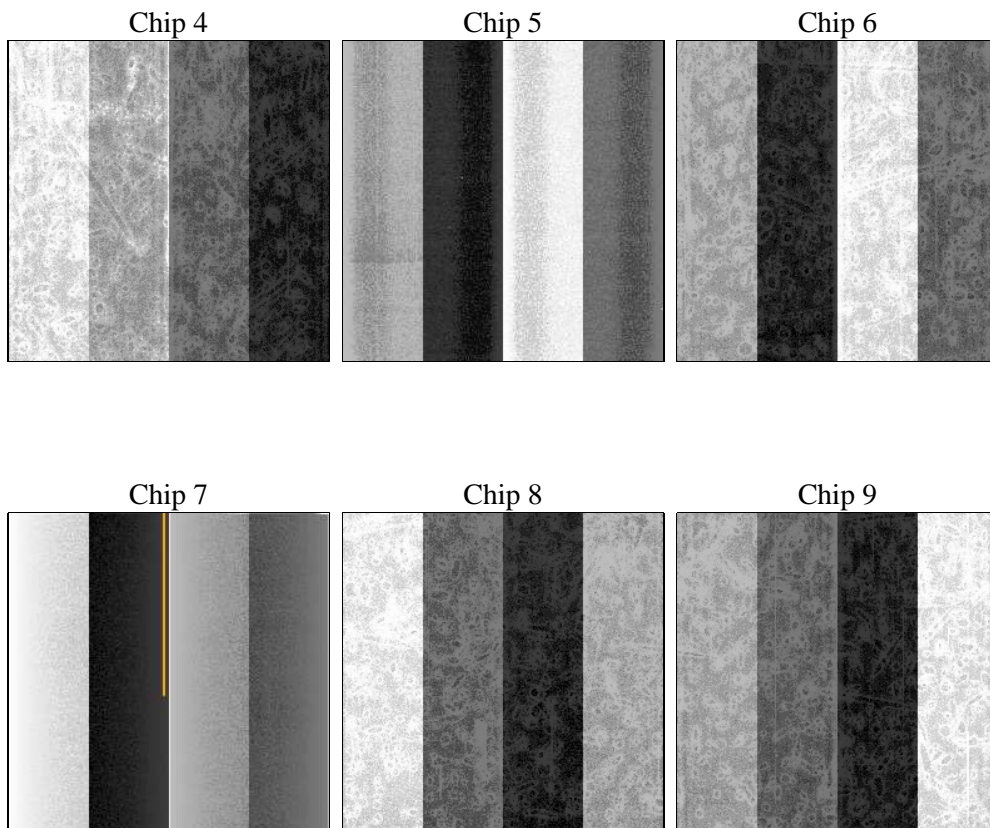
2 OBI

2.1 OBI

2.1.1 Images



2.1.2 Bias



2.1.3 Parameters

obi_num	0	Obi number	sched_exp_time	0.0	[s] Scheduled observation exposure time
ascdsver	8.4.5	Processing system revision	ontime	2906.8567765653	Sum of GTIs [s]
caldsver	4.5.1.1	 	ontime4	1111.6753756106	Sum of GTIs [s]
date	2012-08-22T02:23:19	Date and time of file creation	ontime5	3121.1092378646	Sum of GTIs [s]
revision	4	Processing version of data	ontime6	1241.3169459403	Sum of GTIs [s]
			ontime7	2906.8567765653	Sum of GTIs [s]
			ontime8	1254.2811059654	Sum of GTIs [s]
			ontime9	1218.6296160296	Sum of GTIs [s]
			l1events	1059905	Number of level 1 events

2.1.4 Events

	ccd 4	ccd 5	ccd 6	ccd 7	ccd 8	ccd 9		ccd 4	ccd 5	ccd 6	ccd 7	ccd 8	ccd 9
level 1 events	109574	279619	129221	288688	130829	121974	grade 0 events	53962	64783	63249	69540	63722	60019
rejected events	13773	27398	13542	17422	14639	13328		49%	23%	48%	24%	48%	49%
rejected %	12%	9%	10%	6%	11%	10%	grade 1 events	399	232	413	182	393	406
								0%	0%	0%	0%	0%	0%
							grade 2 events	16911	87053	19710	59987	20656	18764
								15%	31%	15%	20%	15%	15%
							grade 3 events	6061	16767	7099	27785	7378	6819
								5%	5%	5%	9%	5%	5%
							grade 4 events	5884	16836	7127	27779	7522	6744
								5%	6%	5%	9%	5%	5%
							grade 5 events	871	5766	1021	3921	1082	1001
								0%	2%	0%	1%	0%	0%
							grade 6 events	12983	66782	18494	86175	16912	16300
								11%	23%	14%	29%	12%	13%
							grade 7 events	12503	21400	12108	13319	13164	11921
								11%	7%	9%	4%	10%	9%

2.2 Compared Parameters

Parameter	Planned	Actual	Parameter	Planned	Actual
Instrument	ACIS	ACIS	Obspar format version number	7	7
Detector	ACIS-456789	ACIS-456789	Obspar file type	PREDICTED	ACTUAL
Grating	NONE	NONE	Obspar update status	NONE	UPDATED
Data mode	FAINT	FAINT	On-chip summing requested	N	N
Observation mode	SECONDARY	SECONDARY	Subarray requested	NONE	NONE
[deg] Pointing RA	0	180.0200674284173	Alternating exposures requested	N	N
[deg] Pointing Dec	0	-64.97014735550439	[s] Primary exposure time	0.000000	3.2
[deg] Pointing Roll	0.0	41.03200562892954			
[mm] SIM focus pos	-0.684267	-1.038866356238299			
[mm] SIM defocus	0	0.4944702831659975			
[mm] SIM translation stage pos	-190.132523	250.466033080201			
[mm] SIM translation stage offset	0	-0.01005468664627074			
[s] Observation start time (MET)	66056731.137	66056730.368831			
Observation start date	2000-02-04T13:05:31	2000-02-04T13:05:30			
[s] Observation end time (MET)	66064031.188	66064030.419096			
Observation end date	2000-02-04T15:07:11	2000-02-04T15:07:10			
Read mode	TIMED	TIMED			

2.3 Star Slots

2.4 FID Slots

A Summary

A.1 Status

V&V Scientist	Beth Sundheim
V&V Date (YYYY-MM-DD)	2012.08.22
V&V Edition	1
V&V Disposition and Status	OK
V&V Charge Time	2.9068567765653

A.2 Comments