

# V&V Reference Report

## L2 ASCDS Version : 8.4.5

Observation 62174 - L2 Version 4  
Chandra X-Ray Center

L2 Processing Date : Aug 22 2012

## Contents

<b>1</b>	<b>Front</b>	<b>2</b>
<b>2</b>	<b>OBI</b>	<b>3</b>
2.1	OBI . . . . .	3
2.1.1	Images . . . . .	3
2.1.2	Bias . . . . .	3
2.1.3	Parameters . . . . .	4
2.1.4	Events . . . . .	4
2.2	Compared Parameters . . . . .	5
2.3	Star Slots . . . . .	6
2.4	FID Slots . . . . .	6
<b>A</b>	<b>Summary</b>	<b>7</b>
A.1	Status . . . . .	7
A.2	Comments . . . . .	7

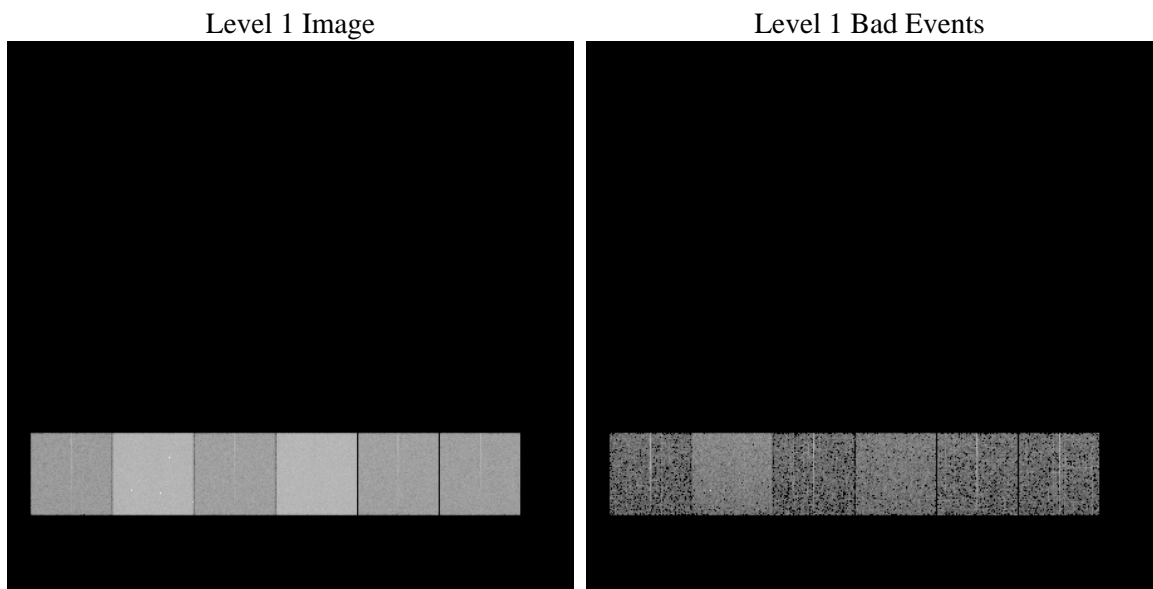
# 1 Front

seq_num	&#160	Sequence number
obs_id	62174	Observation id
title	ACIS-456789 diagnostics	Proposal title
observer	CHANDRA engineering request/realtime commanding	Principal investig
object	&#160	Source name
dtcycle	0	&#160
cycle	P	events from which exps? Prim/Second/Both
ra_targ	0.0	Observer's specified target RA [deg]
dec_targ	0.0	Observer's specified target Dec [deg]
ra_nom	83.651050350183	Nominal RA [deg]
dec_nom	22.476432109846	Nominal Dec [deg]
roll_nom	273.19698023915	Nominal Roll [deg]
revision	4	Processing version of data
ontime	2894.6976421252	Sum of GTIs [s]
livetime	2858.0432376029	Livetime [s]
ontime4	1120.1317213699	Sum of GTIs [s]
ontime5	3108.6021538004	Sum of GTIs [s]
ontime6	1256.2142020687	Sum of GTIs [s]
ontime7	2894.6976421252	Sum of GTIs [s]
ontime8	1266.0194818676	Sum of GTIs [s]
ontime9	1226.9218017906	Sum of GTIs [s]
l2events	923163	Number of level 2 events

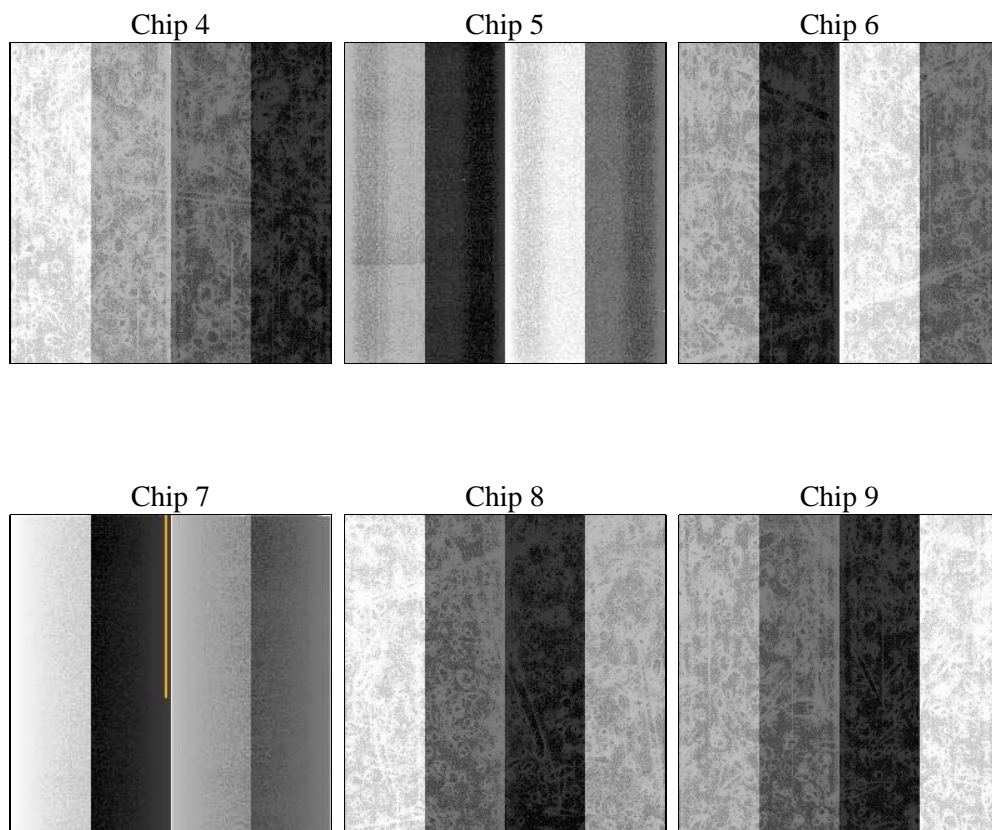
## 2 OBI

### 2.1 OBI

#### 2.1.1 Images



#### 2.1.2 Bias



### 2.1.3 Parameters

obi_num	0	Obi number	sched_exp_time	0.0	[s] Scheduled observation exposure time
ascdsver	8.4.5	Processing system revision	ontime	2894.6976421252	Sum of GTIs [s]
caldsver	4.5.1.1	&#160	ontime4	1120.1317213699	Sum of GTIs [s]
date	2012-08-22T03:09:23	Date and time of file creation	ontime5	3108.6021538004	Sum of GTIs [s]
revision	4	Processing version of data	ontime6	1256.2142020687	Sum of GTIs [s]
			ontime7	2894.6976421252	Sum of GTIs [s]
			ontime8	1266.0194818676	Sum of GTIs [s]
			ontime9	1226.9218017906	Sum of GTIs [s]
			l1events	1064151	Number of level 1 events

### 2.1.4 Events

	ccd 4	ccd 5	ccd 6	ccd 7	ccd 8	ccd 9		ccd 4	ccd 5	ccd 6	ccd 7	ccd 8	ccd 9
level 1 events	109069	280047	130275	288234	132736	123790	grade 0 events	54386	66042	63886	69757	64982	60320
rejected events	13153	27196	13204	18454	14998	14276		49%	23%	49%	24%	48%	48%
rejected %	12%	9%	10%	6%	11%	11%	grade 1 events	370	230	467	220	401	361
								0%	0%	0%	0%	0%	0%
							grade 2 events	16707	86795	20420	59645	20710	19227
								15%	30%	15%	20%	15%	15%
							grade 3 events	6003	17296	7314	27734	7411	6814
								5%	6%	5%	9%	5%	5%
							grade 4 events	5955	16949	7276	27916	7625	6765
								5%	6%	5%	9%	5%	5%
							grade 5 events	891	5882	979	3929	1050	1072
								0%	2%	0%	1%	0%	0%
							grade 6 events	13142	66498	18495	85632	17264	16694
								12%	23%	14%	29%	13%	13%
							grade 7 events	11615	20355	11438	13401	13293	12537
								10%	7%	8%	4%	10%	10%

## 2.2 Compared Parameters

Parameter	Planned	Actual	Parameter	Planned	Actual
Instrument	ACIS	ACIS	Obspar format version number	7	7
Detector	ACIS-456789	ACIS-456789	Obspar file type	PREDICTED	ACTUAL
Grating	NONE	NONE	Obspar update status	NONE	UPDATED
Data mode	FAINT	FAINT	On-chip summing requested	N	N
Observation mode	SECONDARY	SECONDARY	Subarray requested	NONE	NONE
[deg] Pointing RA	0	83.65105035018324	Alternating exposures requested	N	N
[deg] Pointing Dec	0	22.47643210984554	[s] Primary exposure time	0.000000	3.2
[deg] Pointing Roll	0.0	273.196980239148			
[mm] SIM focus pos	-0.684267	-0.6828225247311905			
[mm] SIM defocus	0	0.8505141146731063			
[mm] SIM translation stage pos	-190.132523	250.466033080201			
[mm] SIM translation stage offset	0	-0.01005468664627074			
[s] Observation start time (MET)	66280232.395	66280231.626969			
Observation start date	2000-02-07T03:10:32	2000-02-07T03:10:31			
[s] Observation end time (MET)	66294867.346	66294866.577502			
Observation end date	2000-02-07T07:14:27	2000-02-07T07:14:26			
Read mode	TIMED	TIMED			

## 2.3 Star Slots

## 2.4 FID Slots

## A Summary

### A.1 Status

V&V Scientist	Jen Lauer
V&V Date (YYYY-MM-DD)	2012.08.23
V&V Edition	1
V&V Disposition and Status	OK
V&V Charge Time	2.8946976421252

### A.2 Comments