

# V&V Reference Report

## L2 ASCDS Version : 8.4.5

Observation 62151 - L2 Version 4  
Chandra X-Ray Center

L2 Processing Date : Aug 23 2012

## Contents

<b>1</b>	<b>Front</b>	<b>2</b>
<b>2</b>	<b>OBI</b>	<b>3</b>
2.1	OBI . . . . .	3
2.1.1	Images . . . . .	3
2.1.2	Bias . . . . .	3
2.1.3	Parameters . . . . .	4
2.1.4	Events . . . . .	4
2.2	Compared Parameters . . . . .	5
2.3	Star Slots . . . . .	6
2.4	FID Slots . . . . .	6
<b>A</b>	<b>Summary</b>	<b>7</b>
A.1	Status . . . . .	7
A.2	Comments . . . . .	7

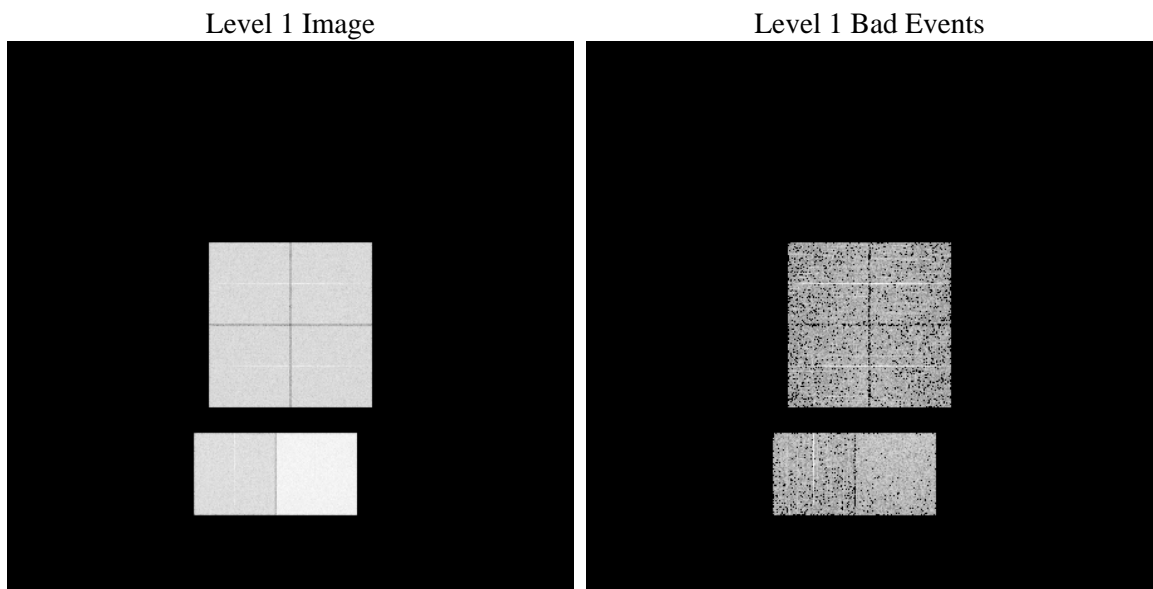
# 1 Front

seq_num	&#160	Sequence number
obs_id	62151	Observation id
title	ACIS-012367 diagnostics	Proposal title
observer	CHANDRA engineering request/realtime commanding	Principal investig
object	&#160	Source name
dtcycle	0	&#160
cycle	P	events from which exps? Prim/Second/Both
ra_targ	0.0	Observer's specified target RA [deg]
dec_targ	0.0	Observer's specified target Dec [deg]
ra_nom	245.85093534314	Nominal RA [deg]
dec_nom	-13.028133566417	Nominal Dec [deg]
roll_nom	80.516434977479	Nominal Roll [deg]
revision	4	Processing version of data
ontime	3500.3014039397	Sum of GTIs [s]
livetime	3455.9784799346	Livetime [s]
ontime0	1403.3687607646	Sum of GTIs [s]
ontime1	1416.3329805732	Sum of GTIs [s]
ontime2	1367.7174604535	Sum of GTIs [s]
ontime3	1376.9753995687	Sum of GTIs [s]
ontime6	1549.2156202197	Sum of GTIs [s]
ontime7	3500.3014039397	Sum of GTIs [s]
l2events	918991	Number of level 2 events

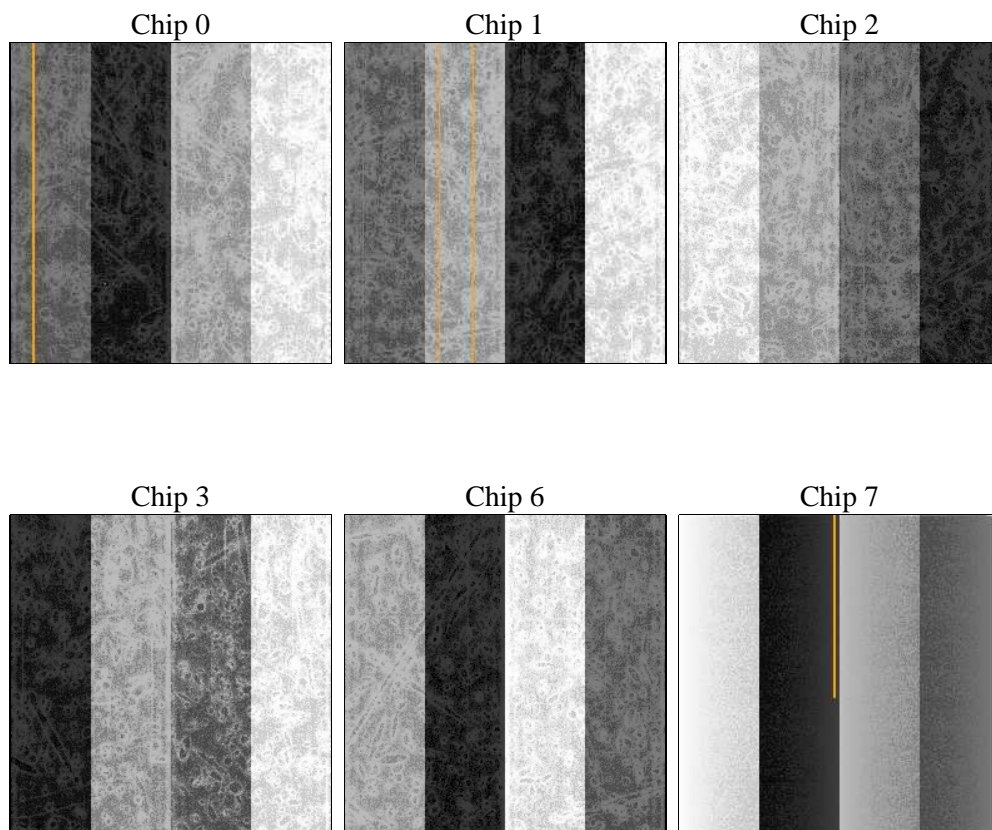
## 2 OBI

### 2.1 OBI

#### 2.1.1 Images



#### 2.1.2 Bias



### 2.1.3 Parameters

obi_num	0	Obi number	sched_exp_time	0.0	[s] Scheduled observation exposure time
ascdsver	8.4.5	Processing system revision	ontime	3500.3014039397	Sum of GTIs [s]
caldbver	4.5.1.1	&#160	ontime0	1403.3687607646	Sum of GTIs [s]
date	2012-08-23T17:30:43	Date and time of file creation	ontime1	1416.3329805732	Sum of GTIs [s]
revision	4	Processing version of data	ontime2	1367.7174604535	Sum of GTIs [s]
			ontime3	1376.9753995687	Sum of GTIs [s]
			ontime6	1549.2156202197	Sum of GTIs [s]
			ontime7	3500.3014039397	Sum of GTIs [s]
			l1events	1050739	Number of level 1 events

### 2.1.4 Events

	ccd 0	ccd 1	ccd 2	ccd 3	ccd 6	ccd 7		ccd 0	ccd 1	ccd 2	ccd 3	ccd 6	ccd 7
level 1 events	137453	139175	135805	136435	159280	342591	grade 0 events	68139	68501	67467	68625	78191	83857
rejected events	14156	14727	14283	13999	15966	20486		49%	49%	49%	50%	49%	24%
rejected %	10%	10%	10%	10%	10%	5%	grade 1 events	436	440	427	487	467	219
								0%	0%	0%	0%	0%	0%
							grade 2 events	21612	22002	21342	21330	24836	71895
								15%	15%	15%	15%	15%	20%
							grade 3 events	7898	7913	7664	7706	9008	33299
								5%	5%	5%	5%	5%	9%
							grade 4 events	7676	7979	7740	7749	8634	32769
								5%	5%	5%	5%	5%	9%
							grade 5 events	1032	1074	921	1072	1176	4647
								0%	0%	0%	0%	0%	1%
							grade 6 events	17972	18053	17309	17026	22645	100285
								13%	12%	12%	12%	14%	29%
							grade 7 events	12688	13213	12935	12440	14323	15620
								9%	9%	9%	9%	8%	4%

## 2.2 Compared Parameters

Parameter	Planned	Actual
Instrument	ACIS	ACIS
Detector	ACIS-012367	ACIS-012367
Grating	NONE	NONE
Data mode	FAINT	FAINT
Observation mode	SECONDARY	SECONDARY
[deg] Pointing RA	0	245.8509353431415
[deg] Pointing Dec	0	-13.02813356641685
[deg] Pointing Roll	0.0	80.51643497747921
[mm] SIM focus pos	-0.782348	-0.7809083437167272
[mm] SIM defocus	0	0.7524282956875696
[mm] SIM translation stage pos	-233.592463	250.4635187648994
[mm] SIM translation stage offset	0	-0.007540371344731511
[s] Observation start time (MET)	67895509.508	67895508.739769
Observation start date	2000-02-25T19:51:50	2000-02-25T19:51:48
[s] Observation end time (MET)	67902809.559	67902808.79003599
Observation end date	2000-02-25T21:53:30	2000-02-25T21:53:28
Read mode	TIMED	TIMED

Parameter	Planned	Actual
Obspar format version number	7	7
Obspar file type	PREDICTED	ACTUAL
Obspar update status	NONE	UPDATED
On-chip summing requested	N	N
Subarray requested	NONE	NONE
Alternating exposures requested	N	N
[s] Primary exposure time	0.000000	3.2

## **2.3 Star Slots**

## **2.4 FID Slots**

## A Summary

### A.1 Status

V&V Scientist	Jen Lauer
V&V Date (YYYY-MM-DD)	2012.08.24
V&V Edition	1
V&V Disposition and Status	OK
V&V Charge Time	3.5003014039397

### A.2 Comments