

V&V Reference Report

L2 ASCDS Version : 8.4.5

Observation 62106 - L2 Version 4
Chandra X-Ray Center

L2 Processing Date : Aug 24 2012

Contents

1	Front	2
2	OBI	3
2.1	OBI	3
2.1.1	Images	3
2.1.2	Bias	3
2.1.3	Parameters	4
2.1.4	Events	4
2.2	Compared Parameters	5
2.3	Star Slots	6
2.4	FID Slots	6
A	Summary	7
A.1	Status	7
A.2	Comments	7

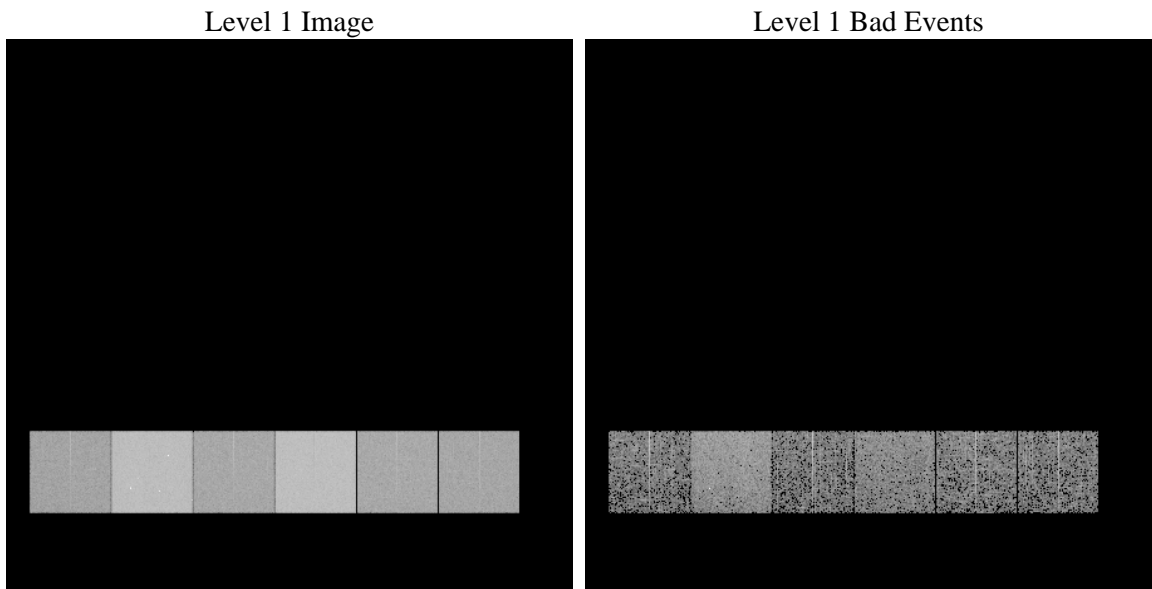
1 Front

seq_num	 	Sequence number
obs_id	62106	Observation id
title	ACIS-456789 diagnostics	Proposal title
observer	CHANDRA engineering request/realtime commanding	Principal investig
object	 	Source name
dtcycle	0	
cycle	P	events from which exps? Prim/Second/Both
ra_targ	0.0	Observer's specified target RA [deg]
dec_targ	0.0	Observer's specified target Dec [deg]
ra_nom	131.36746265459	Nominal RA [deg]
dec_nom	86.415560576907	Nominal Dec [deg]
roll_nom	233.1545359631	Nominal Roll [deg]
revision	4	Processing version of data
ontime	3010.9156822413	Sum of GTIs [s]
livetime	2972.789654917	Livetime [s]
ontime4	1212.1475308686	Sum of GTIs [s]
ontime5	3208.0226286054	Sum of GTIs [s]
ontime6	1312.6197107583	Sum of GTIs [s]
ontime7	3010.9156822413	Sum of GTIs [s]
ontime8	1345.0301106721	Sum of GTIs [s]
ontime9	1273.7272009403	Sum of GTIs [s]
l2events	929486	Number of level 2 events

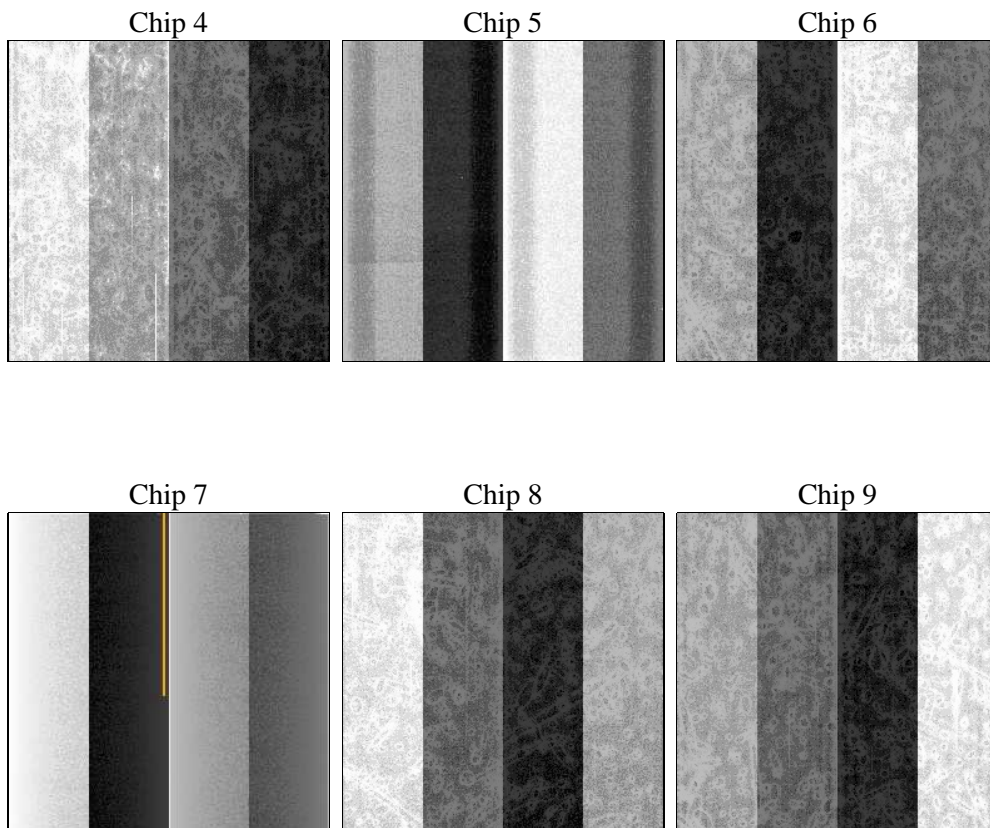
2 OBI

2.1 OBI

2.1.1 Images



2.1.2 Bias



2.1.3 Parameters

obi_num	0	Obi number	sched_exp_time	0.0	[s] Scheduled observation exposure time
ascdsver	8.4.5	Processing system revision	ontime	3010.9156822413	Sum of GTIs [s]
caldsver	4.5.1.1	 	ontime4	1212.1475308686	Sum of GTIs [s]
date	2012-08-24T19:18:06	Date and time of file creation	ontime5	3208.0226286054	Sum of GTIs [s]
revision	4	Processing version of data	ontime6	1312.6197107583	Sum of GTIs [s]
			ontime7	3010.9156822413	Sum of GTIs [s]
			ontime8	1345.0301106721	Sum of GTIs [s]
			ontime9	1273.7272009403	Sum of GTIs [s]
			l1events	1063808	Number of level 1 events

2.1.4 Events

	ccd 4	ccd 5	ccd 6	ccd 7	ccd 8	ccd 9		ccd 4	ccd 5	ccd 6	ccd 7	ccd 8	ccd 9
level 1 events	112949	275862	131464	285428	135036	123069	grade 0 events	56969	64531	64977	69233	66730	60499
rejected events	12709	25971	12432	16247	14059	12738		50%	23%	49%	24%	49%	49%
rejected %	11%	9%	9%	5%	10%	10%	grade 1 events	382	221	373	201	383	360
								0%	0%	0%	0%	0%	0%
							grade 2 events	17439	86051	20636	59444	21195	19608
								15%	31%	15%	20%	15%	15%
							grade 3 events	6309	17004	7351	27450	7604	6779
								5%	6%	5%	9%	5%	5%
							grade 4 events	6111	16699	7302	27431	7567	6894
								5%	6%	5%	9%	5%	5%
							grade 5 events	853	5400	982	3656	1052	930
								0%	1%	0%	1%	0%	0%
							grade 6 events	13412	65606	18766	85623	17881	16551
								11%	23%	14%	29%	13%	13%
							grade 7 events	11474	20350	11077	12390	12624	11448
								10%	7%	8%	4%	9%	9%

2.2 Compared Parameters

Parameter	Planned	Actual
Instrument	ACIS	ACIS
Detector	ACIS-456789	ACIS-456789
Grating	NONE	NONE
Data mode	FAINT	FAINT
Observation mode	SECONDARY	SECONDARY
[deg] Pointing RA	0	131.3674626545871
[deg] Pointing Dec	0	86.41556057690735
[deg] Pointing Roll	0.0	233.1545359630995
[mm] SIM focus pos	-0.684267	-0.6828225247311905
[mm] SIM defocus	0	0.8505141146731063
[mm] SIM translation stage pos	-190.132523	250.466033080201
[mm] SIM translation stage offset	0	-0.01005468664627074
[s] Observation start time (MET)	70402259.84981599	70402259.081347
Observation start date	2000-03-25T20:11:00	2000-03-25T20:10:59
[s] Observation end time (MET)	70409559.90008301	70409559.131614
Observation end date	2000-03-25T22:12:40	2000-03-25T22:12:39
Read mode	TIMED	TIMED

Parameter	Planned	Actual
Obspar format version number	7	7
Obspar file type	PREDICTED	ACTUAL
Obspar update status	NONE	UPDATED
On-chip summing requested	N	N
Subarray requested	NONE	NONE
Alternating exposures requested	N	N
[s] Primary exposure time	3.2	3.2

2.3 Star Slots

2.4 FID Slots

A Summary

A.1 Status

V&V Scientist	Jen Lauer
V&V Date (YYYY-MM-DD)	2012.08.28
V&V Edition	1
V&V Disposition and Status	OK
V&V Charge Time	3.0109156822413

A.2 Comments