

V&V Reference Report

L2 ASCDS Version : 8.4.5

Observation 62099 - L2 Version 4
Chandra X-Ray Center

L2 Processing Date : Aug 25 2012

Contents

1	Front	2
2	OBI	3
2.1	OBI	3
2.1.1	Images	3
2.1.2	Bias	3
2.1.3	Parameters	4
2.1.4	Events	4
2.2	Compared Parameters	5
2.3	Star Slots	6
2.4	FID Slots	6
A	Summary	7
A.1	Status	7
A.2	Comments	7

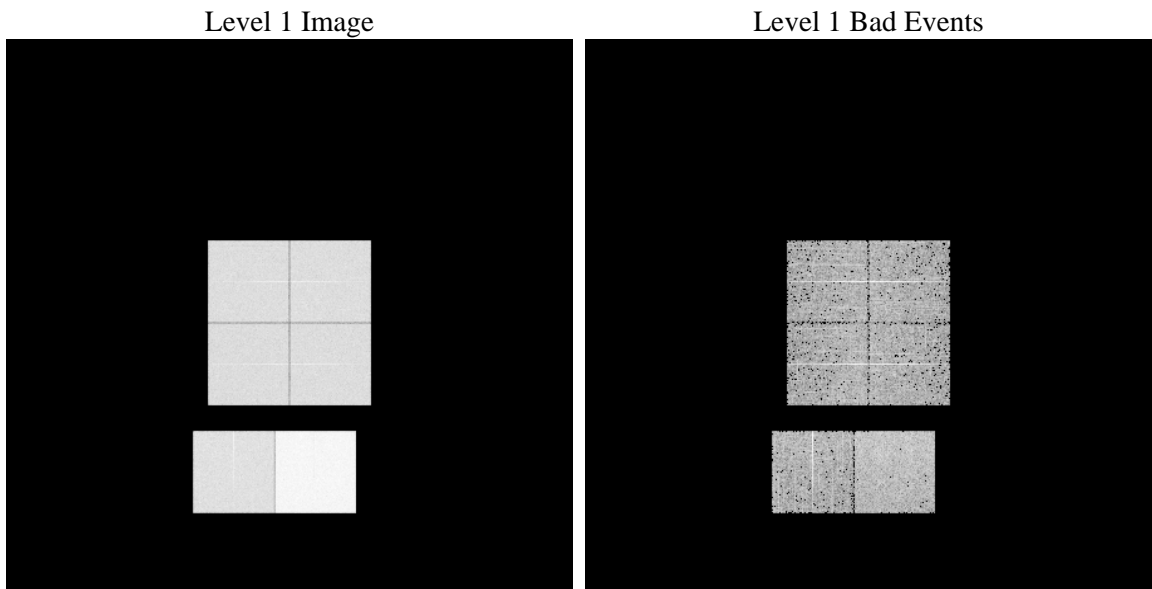
1 Front

seq_num	 	Sequence number
obs_id	62099	Observation id
title	ACIS-012367 diagnostics	Proposal title
observer	CHANDRA engineering request/realtime commanding	Principal investig
object	 	Source name
dtcycle	0	
cycle	P	events from which exps? Prim/Second/Both
ra_targ	0.0	Observer's specified target RA [deg]
dec_targ	0.0	Observer's specified target Dec [deg]
ra_nom	196.97017240235	Nominal RA [deg]
dec_nom	23.990648888661	Nominal Dec [deg]
roll_nom	166.73626522819	Nominal Roll [deg]
revision	4	Processing version of data
ontime	5401.4592525661	Sum of GTIs [s]
livetime	5333.0627231418	Livetime [s]
ontime0	2232.4998853058	Sum of GTIs [s]
ontime1	2260.9231069833	Sum of GTIs [s]
ontime2	2135.3508752286	Sum of GTIs [s]
ontime3	2177.3200955242	Sum of GTIs [s]
ontime6	2388.19276537	Sum of GTIs [s]
ontime7	5401.4592525661	Sum of GTIs [s]
l2events	1395338	Number of level 2 events

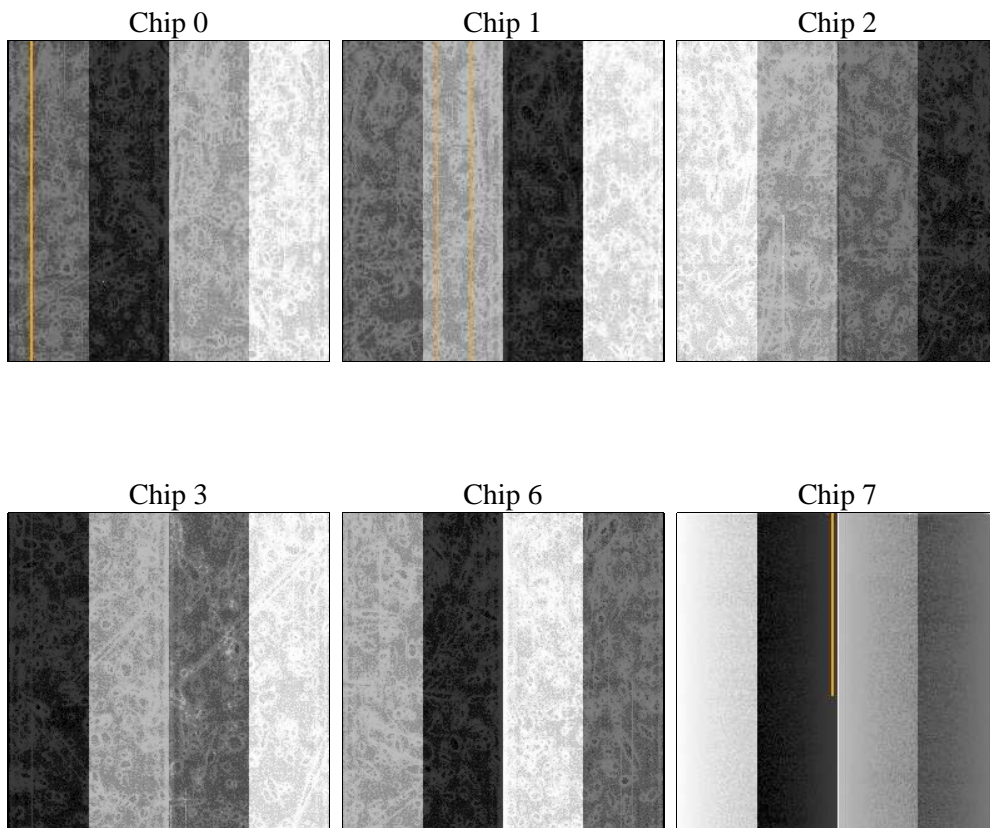
2 OBI

2.1 OBI

2.1.1 Images



2.1.2 Bias



2.1.3 Parameters

obi_num	0	Obi number	sched_exp_time	0.0	[s] Scheduled observation exposure time
ascdsver	8.4.5	Processing system revision	ontime	5401.4592525661	Sum of GTIs [s]
caldbver	4.5.1.1	 	ontime0	2232.4998853058	Sum of GTIs [s]
date	2012-08-25T10:58:18	Date and time of file creation	ontime1	2260.9231069833	Sum of GTIs [s]
revision	4	Processing version of data	ontime2	2135.3508752286	Sum of GTIs [s]
			ontime3	2177.3200955242	Sum of GTIs [s]
			ontime6	2388.19276537	Sum of GTIs [s]
			ontime7	5401.4592525661	Sum of GTIs [s]
			l1events	1587509	Number of level 1 events

2.1.4 Events

	ccd 0	ccd 1	ccd 2	ccd 3	ccd 6	ccd 7		ccd 0	ccd 1	ccd 2	ccd 3	ccd 6	ccd 7
level 1 events	211825	213868	205047	208815	237624	510330	grade 0 events	105606	106928	103177	105057	117437	123648
rejected events	20672	20639	20931	20628	22321	29686		49%	49%	50%	50%	49%	24%
rejected %	9%	9%	10%	9%	9%	5%	grade 1 events	643	667	622	627	640	346
								0%	0%	0%	0%	0%	0%
							grade 2 events	33614	33967	32085	32890	37197	106578
								15%	15%	15%	15%	15%	20%
							grade 3 events	12186	12180	11557	12043	13471	49293
								5%	5%	5%	5%	5%	9%
							grade 4 events	12088	12149	11257	11927	13345	48873
								5%	5%	5%	5%	5%	9%
							grade 5 events	1542	1579	1471	1545	1744	6681
								0%	0%	0%	0%	0%	1%
							grade 6 events	27659	28005	26040	26270	33853	152252
								13%	13%	12%	12%	14%	29%
							grade 7 events	18487	18393	18838	18456	19937	22659
								8%	8%	9%	8%	8%	4%

2.2 Compared Parameters

Parameter	Planned	Actual	Parameter	Planned	Actual
Instrument	ACIS	ACIS	Obspar format version number	7	7
Detector	ACIS-012367	ACIS-012367	Obspar file type	PREDICTED	ACTUAL
Grating	NONE	NONE	Obspar update status	NONE	UPDATED
Data mode	FAINT	FAINT	On-chip summing requested	N	N
Observation mode	SECONDARY	SECONDARY	Subarray requested	NONE	NONE
[deg] Pointing RA	0	196.9701724023519	Alternating exposures requested	N	N
[deg] Pointing Dec	0	23.99064888866147	[s] Primary exposure time	0.000000	3.2
[deg] Pointing Roll	0.0	166.7362652281908			
[mm] SIM focus pos	-0.782348	-0.7809083437167272			
[mm] SIM defocus	0	0.7524282956875696			
[mm] SIM translation stage pos	-233.592463	250.466033080201			
[mm] SIM translation stage offset	0	-0.01005468664627074			
[s] Observation start time (MET)	70855119.21600001	70855118.44791199			
Observation start date	2000-03-31T01:58:39	2000-03-31T01:58:38			
[s] Observation end time (MET)	70867023.567	70867022.79834799			
Observation end date	2000-03-31T05:17:04	2000-03-31T05:17:02			
Read mode	TIMED	TIMED			

2.3 Star Slots

2.4 FID Slots

A Summary

A.1 Status

V&V Scientist	Jen Lauer
V&V Date (YYYY-MM-DD)	2012.08.28
V&V Edition	1
V&V Disposition and Status	OK
V&V Charge Time	5.4014592525661

A.2 Comments