

V&V Reference Report

L2 ASCDS Version : 8.4.5

Observation 62098 - L2 Version 4
Chandra X-Ray Center

L2 Processing Date : Aug 25 2012

Contents

1	Front	2
2	OBI	3
2.1	OBI	3
2.1.1	Images	3
2.1.2	Bias	3
2.1.3	Parameters	4
2.1.4	Events	4
2.2	Compared Parameters	5
2.3	Star Slots	6
2.4	FID Slots	6
A	Summary	7
A.1	Status	7
A.2	Comments	7

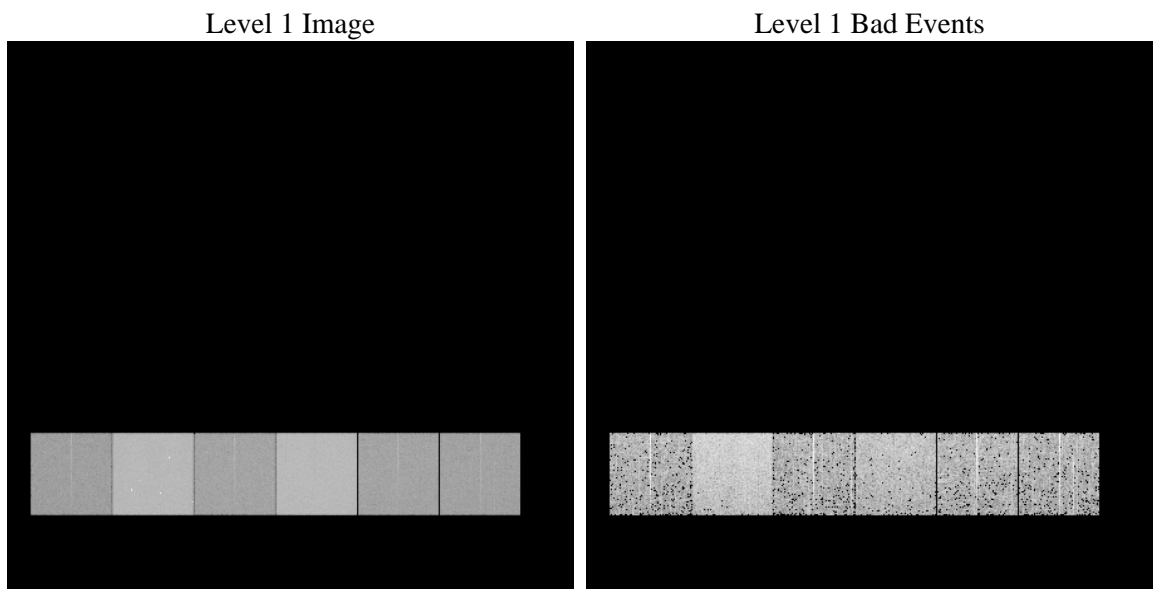
1 Front

seq_num	 	Sequence number
obs_id	62098	Observation id
title	ACIS-456789 diagnostics	Proposal title
observer	CHANDRA engineering request/realtime commanding	Principal investig
object	 	Source name
dtcycle	0	
cycle	P	events from which exps? Prim/Second/Both
ra_targ	0.0	Observer's specified target RA [deg]
dec_targ	0.0	Observer's specified target Dec [deg]
ra_nom	86.011377109251	Nominal RA [deg]
dec_nom	-30.027100420295	Nominal Dec [deg]
roll_nom	257.64552950593	Nominal Roll [deg]
revision	4	Processing version of data
ontime	4161.1775761396	Sum of GTIs [s]
livetime	4108.4862401102	Livetime [s]
ontime4	1656.1699499339	Sum of GTIs [s]
ontime5	4439.8608409166	Sum of GTIs [s]
ontime6	1876.5605895817	Sum of GTIs [s]
ontime7	4161.1775761396	Sum of GTIs [s]
ontime8	1837.1999368221	Sum of GTIs [s]
ontime9	1792.0306267887	Sum of GTIs [s]
l2events	1283217	Number of level 2 events

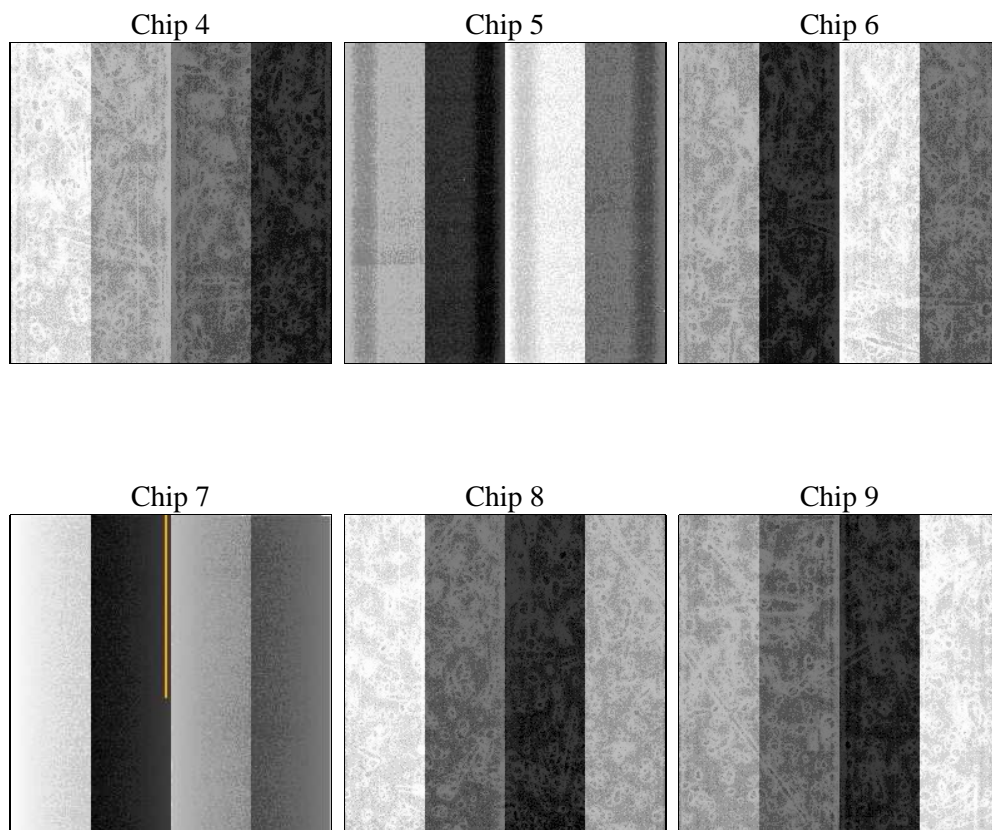
2 OBI

2.1 OBI

2.1.1 Images



2.1.2 Bias



2.1.3 Parameters

obi_num	0	Obi number	sched_exp_time	0.0	[s] Scheduled observation exposure time
ascdsver	8.4.5	Processing system revision	ontime	4161.1775761396	Sum of GTIs [s]
caldsver	4.5.1.1	 	ontime4	1656.1699499339	Sum of GTIs [s]
date	2012-08-25T12:10:05	Date and time of file creation	ontime5	4439.8608409166	Sum of GTIs [s]
revision	4	Processing version of data	ontime6	1876.5605895817	Sum of GTIs [s]
			ontime7	4161.1775761396	Sum of GTIs [s]
			ontime8	1837.1999368221	Sum of GTIs [s]
			ontime9	1792.0306267887	Sum of GTIs [s]
			l1events	1469423	Number of level 1 events

2.1.4 Events

	ccd 4	ccd 5	ccd 6	ccd 7	ccd 8	ccd 9		ccd 4	ccd 5	ccd 6	ccd 7	ccd 8	ccd 9
level 1 events	154656	380573	186556	392329	183463	171846	grade 0 events	77716	90949	92290	95367	91038	84738
rejected events	17203	35076	17975	23049	19240	17661		50%	23%	49%	24%	49%	49%
rejected %	11%	9%	9%	5%	10%	10%	grade 1 events	467	259	517	269	517	518
								0%	0%	0%	0%	0%	0%
							grade 2 events	24011	118652	29339	82117	28934	26979
								15%	31%	15%	20%	15%	15%
							grade 3 events	8579	23570	10303	37942	10245	9491
								5%	6%	5%	9%	5%	5%
							grade 4 events	8548	23309	10492	37650	10182	9651
								5%	6%	5%	9%	5%	5%
							grade 5 events	1129	7313	1426	5303	1513	1289
								0%	1%	0%	1%	0%	0%
							grade 6 events	18599	89017	26157	116204	23824	23326
								12%	23%	14%	29%	12%	13%
							grade 7 events	15607	27504	16032	17477	17210	15854
								10%	7%	8%	4%	9%	9%

2.2 Compared Parameters

Parameter	Planned	Actual	Parameter	Planned	Actual
Instrument	ACIS	ACIS	Obspar format version number	7	7
Detector	ACIS-456789	ACIS-456789	Obspar file type	PREDICTED	ACTUAL
Grating	NONE	NONE	Obspar update status	NONE	UPDATED
Data mode	FAINT	FAINT	On-chip summing requested	N	N
Observation mode	SECONDARY	SECONDARY	Subarray requested	NONE	NONE
[deg] Pointing RA	0	86.01137710925052	Alternating exposures requested	N	N
[deg] Pointing Dec	0	-30.02710042029452	[s] Primary exposure time	0.000000	3.2
[deg] Pointing Roll	0.0	257.6455295059329			
[mm] SIM focus pos	-0.684267	-0.7809083437167272			
[mm] SIM defocus	0	0.7524282956875696			
[mm] SIM translation stage pos	-190.132523	250.466033080201			
[mm] SIM translation stage offset	0	-0.01005468664627074			
[s] Observation start time (MET)	71038471.223	71038470.454623			
Observation start date	2000-04-02T04:54:31	2000-04-02T04:54:30			
[s] Observation end time (MET)	71087691.72499999	71087690.956425			
Observation end date	2000-04-02T18:34:52	2000-04-02T18:34:50			
Read mode	TIMED	TIMED			

2.3 Star Slots

2.4 FID Slots

A Summary

A.1 Status

V&V Scientist	Jen Lauer
V&V Date (YYYY-MM-DD)	2012.08.28
V&V Edition	1
V&V Disposition and Status	OK
V&V Charge Time	4.1611775761396

A.2 Comments