

# V&V Reference Report

## L2 ASCDS Version : 8.4.5

Observation 62076 - L2 Version 5  
Chandra X-Ray Center

L2 Processing Date : Aug 25 2012

## Contents

<b>1</b>	<b>Front</b>	<b>2</b>
<b>2</b>	<b>OBI</b>	<b>3</b>
2.1	OBI . . . . .	3
2.1.1	Images . . . . .	3
2.1.2	Bias . . . . .	3
2.1.3	Parameters . . . . .	4
2.1.4	Events . . . . .	4
2.2	Compared Parameters . . . . .	5
2.3	Star Slots . . . . .	6
2.4	FID Slots . . . . .	6
<b>A</b>	<b>Summary</b>	<b>7</b>
A.1	Status . . . . .	7
A.2	Comments . . . . .	7

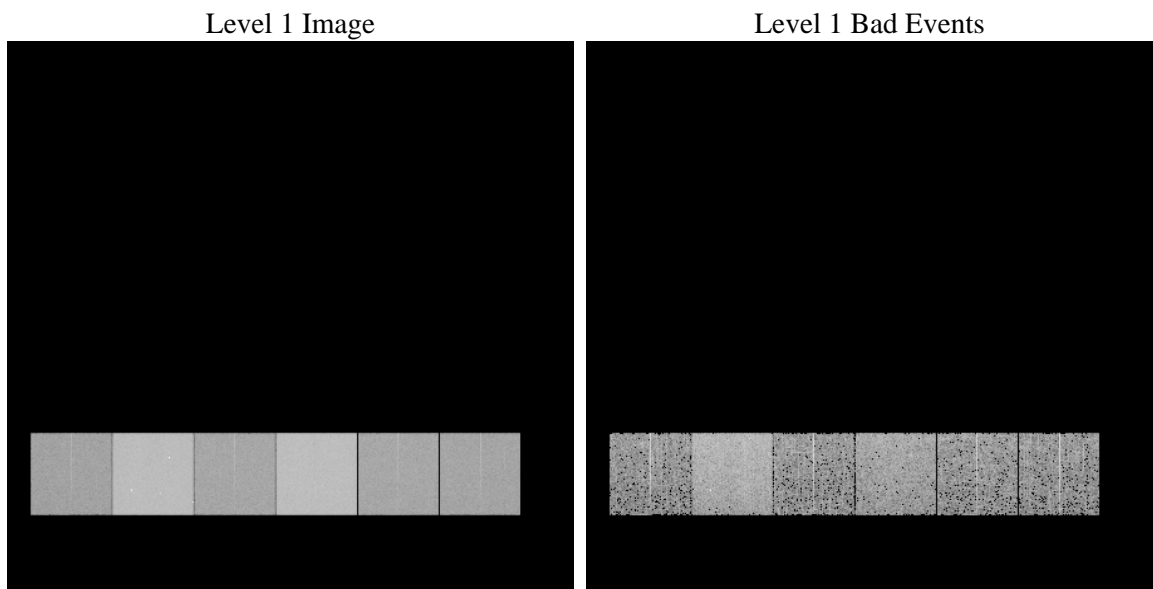
# 1 Front

seq_num	&#160	Sequence number
obs_id	62076	Observation id
title	ACIS-456789 diagnostics	Proposal title
observer	CHANDRA engineering request/realtime commanding	Principal investig
object	&#160	Source name
dtcycle	0	&#160
cycle	P	events from which exps? Prim/Second/Both
ra_targ	0.0	Observer's specified target RA [deg]
dec_targ	0.0	Observer's specified target Dec [deg]
ra_nom	63.046892124979	Nominal RA [deg]
dec_nom	52.994163146195	Nominal Dec [deg]
roll_nom	316.04380631798	Nominal Roll [deg]
revision	5	Processing version of data
ontime	4246.1111479551	Sum of GTIs [s]
livetime	4192.3443318985	Livetime [s]
ontime4	1659.4110197723	Sum of GTIs [s]
ontime5	4543.9167193621	Sum of GTIs [s]
ontime6	1821.4628797472	Sum of GTIs [s]
ontime7	4246.1111479551	Sum of GTIs [s]
ontime8	1860.3554394096	Sum of GTIs [s]
ontime9	1772.8474493921	Sum of GTIs [s]
l2events	1274147	Number of level 2 events

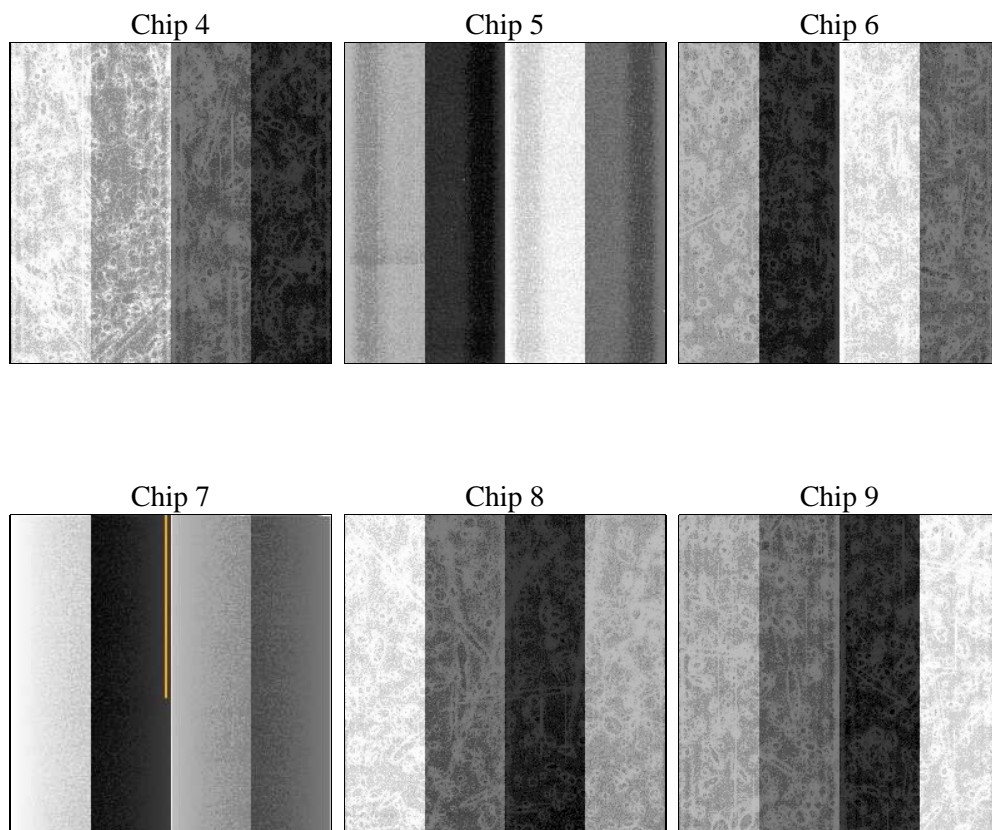
## 2 OBI

### 2.1 OBI

#### 2.1.1 Images



#### 2.1.2 Bias



### 2.1.3 Parameters

obi_num	0	Obi number	sched_exp_time	0.0	[s] Scheduled observation exposure time
ascdsver	8.4.5	Processing system revision	ontime	4246.1111479551	Sum of GTIs [s]
caldsver	4.5.1.1	&#160	ontime4	1659.4110197723	Sum of GTIs [s]
date	2012-08-25T23:12:59	Date and time of file creation	ontime5	4543.9167193621	Sum of GTIs [s]
revision	5	Processing version of data	ontime6	1821.4628797472	Sum of GTIs [s]
			ontime7	4246.1111479551	Sum of GTIs [s]
			ontime8	1860.3554394096	Sum of GTIs [s]
			ontime9	1772.8474493921	Sum of GTIs [s]
			l1events	1461520	Number of level 1 events

### 2.1.4 Events

	ccd 4	ccd 5	ccd 6	ccd 7	ccd 8	ccd 9		ccd 4	ccd 5	ccd 6	ccd 7	ccd 8	ccd 9
level 1 events	152708	383482	179198	396304	182114	167714	grade 0 events	76546	88877	88057	96808	90394	82115
rejected events	17665	37133	17887	23992	18674	17509		50%	23%	49%	24%	49%	48%
rejected %	11%	9%	9%	6%	10%	10%	grade 1 events	480	266	507	277	561	496
								0%	0%	0%	0%	0%	0%
							grade 2 events	23538	120403	27895	82548	28753	26514
								15%	31%	15%	20%	15%	15%
							grade 3 events	8283	23346	9839	38263	9944	9484
								5%	6%	5%	9%	5%	5%
							grade 4 events	8294	23096	10148	37895	10197	9502
								5%	6%	5%	9%	5%	5%
							grade 5 events	1156	7819	1416	5470	1369	1367
								0%	2%	0%	1%	0%	0%
							grade 6 events	18382	90627	25372	117087	24152	22590
								12%	23%	14%	29%	13%	13%
							grade 7 events	16029	29048	15964	17956	16744	15646
								10%	7%	8%	4%	9%	9%

## 2.2 Compared Parameters

Parameter	Planned	Actual
Instrument	ACIS	ACIS
Detector	ACIS-456789	ACIS-456789
Grating	NONE	NONE
Data mode	FAINT	FAINT
Observation mode	SECONDARY	SECONDARY
[deg] Pointing RA	0	63.04689212497912
[deg] Pointing Dec	0	52.99416314619463
[deg] Pointing Roll	0.0	316.0438063179848
[mm] SIM focus pos	-0.684267	-0.6828225247311905
[mm] SIM defocus	0	0.8505141146731063
[mm] SIM translation stage pos	-190.132523	250.466033080201
[mm] SIM translation stage offset	0	-0.01005468664627074
[s] Observation start time (MET)	72868323.84	72868323.071698
Observation start date	2000-04-23T09:12:04	2000-04-23T09:12:03
[s] Observation end time (MET)	72914545.192	72914544.42339499
Observation end date	2000-04-23T22:02:25	2000-04-23T22:02:24
Read mode	TIMED	TIMED

Parameter	Planned	Actual
Obspar format version number	7	7
Obspar file type	PREDICTED	ACTUAL
Obspar update status	NONE	UPDATED
On-chip summing requested	N	N
Subarray requested	NONE	NONE
Alternating exposures requested	N	N
[s] Primary exposure time	0.000000	3.2

## **2.3 Star Slots**

## **2.4 FID Slots**

## A Summary

### A.1 Status

V&V Scientist	Jen Lauer
V&V Date (YYYY-MM-DD)	2012.08.28
V&V Edition	1
V&V Disposition and Status	OK
V&V Charge Time	4.2461111479551

### A.2 Comments