

# V&V Reference Report

## L2 ASCDS Version : 8.4.5

Observation 62037 - L2 Version 5  
Chandra X-Ray Center

L2 Processing Date : Aug 28 2012

## Contents

<b>1</b>	<b>Front</b>	<b>2</b>
<b>2</b>	<b>OBI</b>	<b>3</b>
2.1	OBI . . . . .	3
2.1.1	Images . . . . .	3
2.1.2	Bias . . . . .	3
2.1.3	Parameters . . . . .	4
2.1.4	Events . . . . .	4
2.2	Compared Parameters . . . . .	5
2.3	Star Slots . . . . .	6
2.4	FID Slots . . . . .	6
<b>A</b>	<b>Summary</b>	<b>7</b>
A.1	Status . . . . .	7
A.2	Comments . . . . .	7

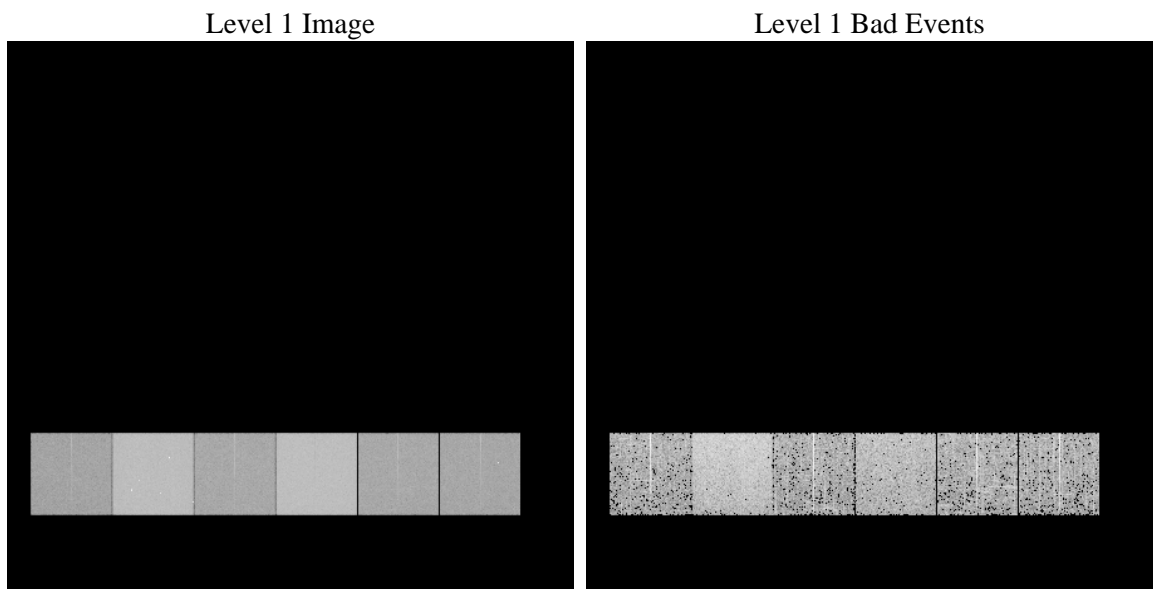
# 1 Front

seq_num	&#160	Sequence number
obs_id	62037	Observation id
title	ACIS-456789 diagnostics	Proposal title
observer	CHANDRA engineering request/realtime commanding	Principal investig
object	&#160	Source name
dtcycle	0	&#160
cycle	P	events from which exps? Prim/Second/Both
ra_targ	0.0	Observer's specified target RA [deg]
dec_targ	0.0	Observer's specified target Dec [deg]
ra_nom	37.538429250338	Nominal RA [deg]
dec_nom	-66.341189528244	Nominal Dec [deg]
roll_nom	149.97450699748	Nominal Roll [deg]
revision	5	Processing version of data
ontime	4115.0618292093	Sum of GTIs [s]
livetime	4062.9544385351	Livetime [s]
ontime4	1664.4759184271	Sum of GTIs [s]
ontime5	4409.5351600051	Sum of GTIs [s]
ontime6	1856.0706537366	Sum of GTIs [s]
ontime7	4115.0618292093	Sum of GTIs [s]
ontime8	1839.5330980569	Sum of GTIs [s]
ontime9	1784.7678835988	Sum of GTIs [s]
l2events	1226467	Number of level 2 events

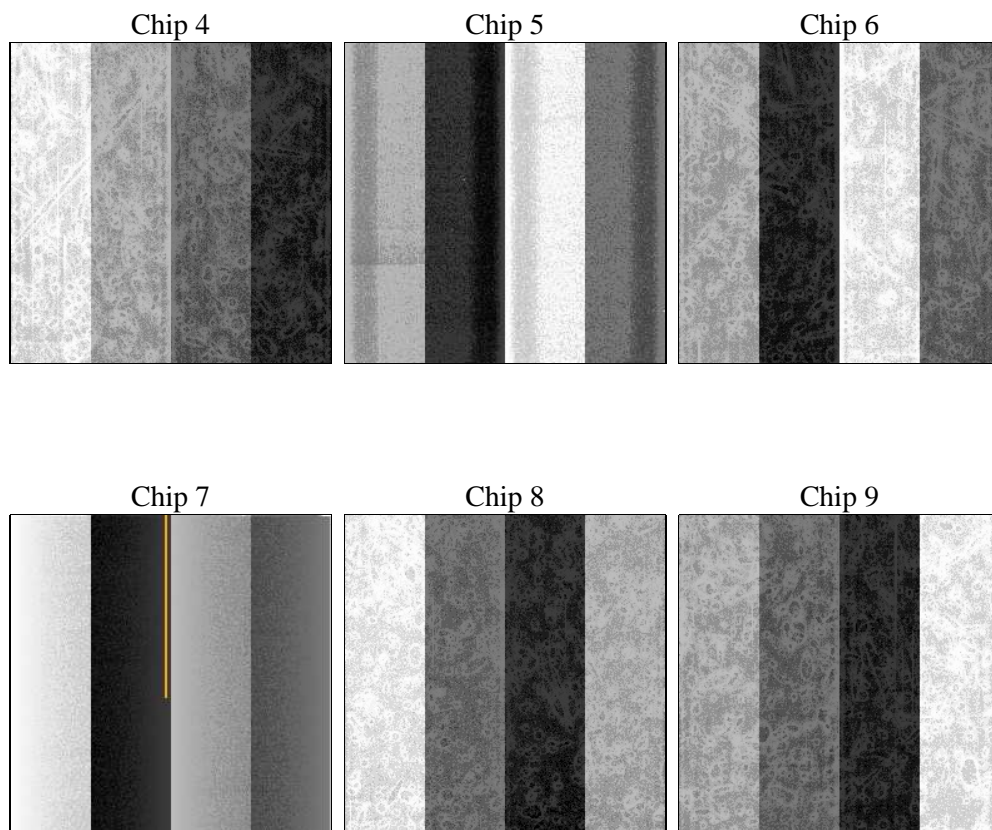
## 2 OBI

### 2.1 OBI

#### 2.1.1 Images



#### 2.1.2 Bias



### 2.1.3 Parameters

obi_num	0	Obi number	sched_exp_time	0.0	[s] Scheduled observation exposure time
ascdsver	8.4.5	Processing system revision	ontime	4115.0618292093	Sum of GTIs [s]
caldsver	4.5.1.1	&#160	ontime4	1664.4759184271	Sum of GTIs [s]
date	2012-08-28T18:35:59	Date and time of file creation	ontime5	4409.5351600051	Sum of GTIs [s]
revision	5	Processing version of data	ontime6	1856.0706537366	Sum of GTIs [s]
			ontime7	4115.0618292093	Sum of GTIs [s]
			ontime8	1839.5330980569	Sum of GTIs [s]
			ontime9	1784.7678835988	Sum of GTIs [s]
			l1events	1401653	Number of level 1 events

### 2.1.4 Events

	ccd 4	ccd 5	ccd 6	ccd 7	ccd 8	ccd 9		ccd 4	ccd 5	ccd 6	ccd 7	ccd 8	ccd 9
level 1 events	149063	361334	177915	372279	175415	165647	grade 0 events	75284	88529	88771	90754	87240	82155
rejected events	16343	32359	16393	21526	17921	16980		50%	24%	49%	24%	49%	49%
rejected %	10%	8%	9%	5%	10%	10%	grade 1 events	430	274	484	273	454	470
								0%	0%	0%	0%	0%	0%
							grade 2 events	23116	110639	27869	78113	27494	26054
								15%	30%	15%	20%	15%	15%
							grade 3 events	8220	22827	9899	35902	9807	9166
								5%	6%	5%	9%	5%	5%
							grade 4 events	8238	22772	10068	35827	9885	9126
								5%	6%	5%	9%	5%	5%
							grade 5 events	1116	6733	1279	4994	1369	1257
								0%	1%	0%	1%	0%	0%
							grade 6 events	17862	84208	25211	110427	23068	22427
								11%	23%	14%	29%	13%	13%
							grade 7 events	14797	25352	14334	15989	16098	14992
								9%	7%	8%	4%	9%	9%

## 2.2 Compared Parameters

Parameter	Planned	Actual
Instrument	ACIS	ACIS
Detector	ACIS-456789	ACIS-456789
Grating	NONE	NONE
Data mode	FAINT	FAINT
Observation mode	SECONDARY	SECONDARY
[deg] Pointing RA	0	37.53842925033808
[deg] Pointing Dec	0	-66.34118952824421
[deg] Pointing Roll	0.0	149.9745069974819
[mm] SIM focus pos	-0.684267	-0.6828225247311905
[mm] SIM defocus	0	0.8505141146731063
[mm] SIM translation stage pos	-190.132523	250.466033080201
[mm] SIM translation stage offset	0	-0.01005468664627074
[s] Observation start time (MET)	76292902.265954	76292901.49749701
Observation start date	2000-06-02T00:28:22	2000-06-02T00:28:21
[s] Observation end time (MET)	76341790.667766	76341789.899299
Observation end date	2000-06-02T14:03:11	2000-06-02T14:03:09
Read mode	TIMED	TIMED

Parameter	Planned	Actual
Obspar format version number	7	7
Obspar file type	PREDICTED	ACTUAL
Obspar update status	NONE	UPDATED
On-chip summing requested	N	N
Subarray requested	NONE	NONE
Alternating exposures requested	N	N
[s] Primary exposure time	3.2	3.2

## 2.3 Star Slots

## 2.4 FID Slots

## A Summary

### A.1 Status

V&V Scientist	Jen Lauer
V&V Date (YYYY-MM-DD)	2012.08.31
V&V Edition	1
V&V Disposition and Status	OK
V&V Charge Time	4.1150618292093

### A.2 Comments