

V&V Reference Report

L2 ASCDS Version : 7.6.10

Observation 62005 - L2 Version 001
Chandra X-Ray Center

L2 Processing Date : May 27 2007

Contents

1	Front	2
2	OBI	3
2.1	OBI	3
2.1.1	Images	3
2.1.2	Bias	3
2.1.3	Parameters	4
2.1.4	Events	4
2.2	Compared Parameters	5
2.3	Star Slots	6
2.4	FID Slots	6
A	Summary	7
A.1	Status	7
A.2	Comments	7

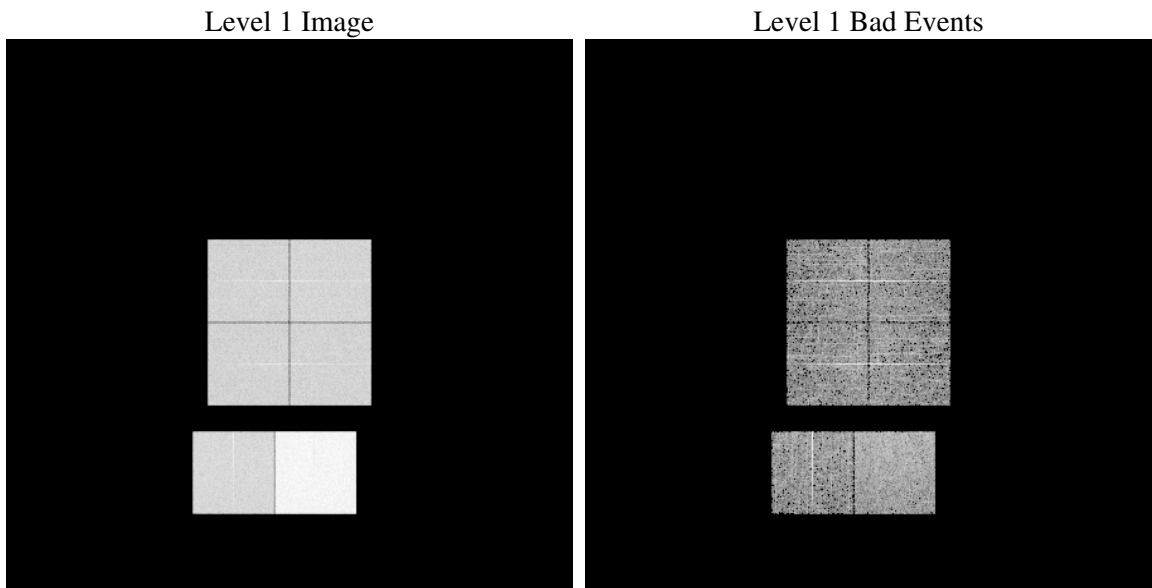
1 Front

seq_num	
obs_id	62005
title	ACIS-012367 diagnostics
observer	CHANDRA engineering request/realtime commanding
object	
dtcycle	0
cycle	P
ra_targ	0.0
dec_targ	0.0
ra_nom	149.9881109644
dec_nom	-50.02773935031
roll_nom	222.17539508216
revision	4
ontime	5643.5047094971
livetime	5572.0432547549
ontime0	2312.8475018591
ontime1	2402.504312247
ontime2	2238.3858315796
ontime3	2263.1399415135
ontime6	2499.7356216311
ontime7	5643.5047094971
l2events	1365184

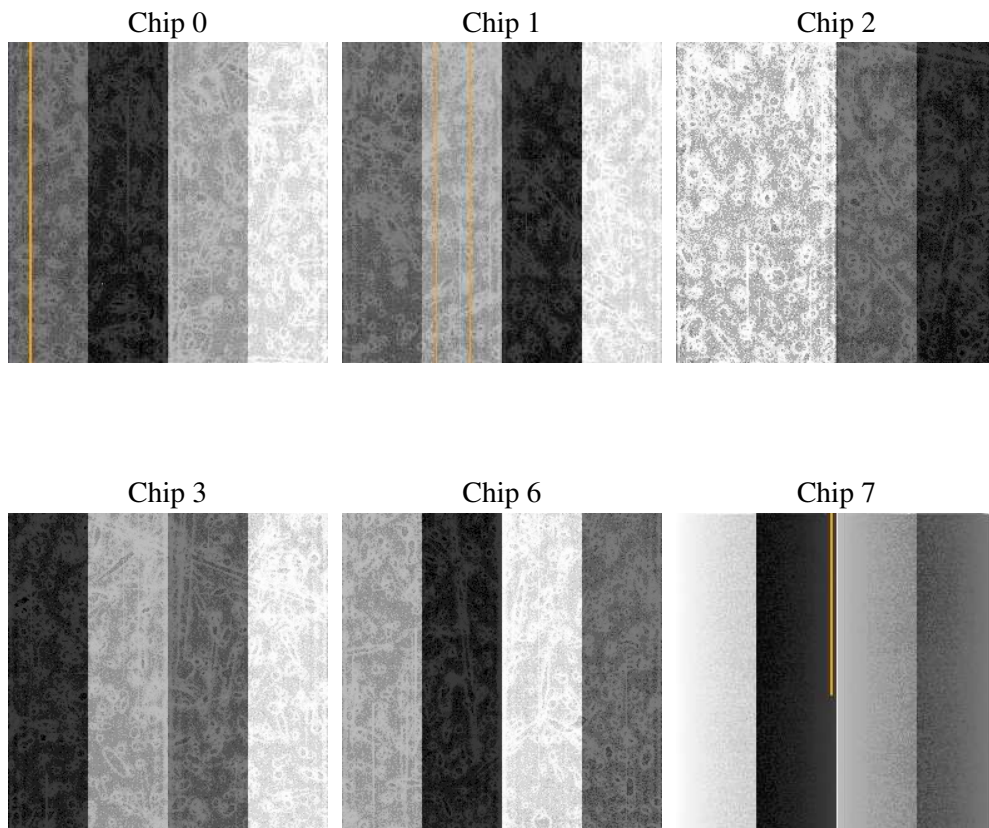
2 OBI

2.1 OBI

2.1.1 Images



2.1.2 Bias



2.1.3 Parameters

obi_num	0
ascdsver	7.6.10
caldbver	3.4.0
date	2007-05-27T23:57:07
revision	4

sched_exp_time	0.0
ontime	5643.5047094971
ontime0	2312.8475018591
ontime1	2402.504312247
ontime2	2238.3858315796
ontime3	2263.1399415135
ontime6	2499.7356216311
ontime7	5643.5047094971
l1events	1553431

2.1.4 Events

	ccd 0	ccd 1	ccd 2	ccd 3	ccd 6	ccd 7
level 1 events	204683	213527	201230	204081	232754	497156
rejected events	19672	20146	20243	20200	21703	29667
rejected %	9%	9%	10%	9%	9%	5%

	ccd 0	ccd 1	ccd 2	ccd 3	ccd 6	ccd 7
grade 0 events	102088	107148	100499	102553	115223	119769
	49%	50%	49%	50%	49%	24%
grade 1 events	570	567	594	610	650	320
	0%	0%	0%	0%	0%	0%
grade 2 events	32820	34069	31747	32361	36038	102911
	16%	15%	15%	15%	15%	20%
grade 3 events	11476	12253	11503	11508	12965	48072
	5%	5%	5%	5%	5%	9%
grade 4 events	11665	12093	11276	11661	13176	47534
	5%	5%	5%	5%	5%	9%
grade 5 events	1445	1519	1418	1427	1739	6609
	0%	0%	0%	0%	0%	1%
grade 6 events	26962	27818	25962	25798	33649	149203
	13%	13%	12%	12%	14%	30%
grade 7 events	17657	18060	18231	18163	19314	22738
	8%	8%	9%	8%	8%	4%

2.2 Compared Parameters

Parameter	Planned	Actual	Parameter	Planned	Actual
Instrument	ACIS	ACIS	Obspar format version number	6	6
Detector	ACIS-012367	ACIS-012367	Obspar file type	PREDICTED	ACTUAL
Grating	NONE	NONE	Obspar update status	NONE	UPDATED
Data mode	FAINT	FAINT	On-chip summing requested	N	N
Observation mode	SECONDARY	SECONDARY	Subarray requested	NONE	NONE
Pointing RA	0	149.9881109643996	Alternating exposures requested	N	N
Pointing Dec	0	-50.02773935030995	Primary exposure time	3.2	3.2
Pointing Roll	0.0	222.1753950821607			
SIM focus pos (mm)	-0.782348	-0.7809083437167272			
SIM defocus (mm)	0	0.7524282956875696			
SIM translation stage pos (mm)	-233.592463	250.466033080201			
SIM translation stage offset (mm)	0	-0.01005468664627074			
Observation start time	79081601.418715	79081600.650251			
Observation start date	2000-07-04T07:06:41	2000-07-04T07:06:40			
Observation end time	79092111.76910201	79092111.00063799			
Observation end date	2000-07-04T10:01:52	2000-07-04T10:01:51			
Read mode	TIMED	TIMED			

2.3 Star Slots

2.4 FID Slots

A Summary

A.1 Status

V&V Scientist	Jen Lauer
V&V Date (YYYY-MM-DD)	2007.05.29
V&V Edition	1
V&V Disposition and Status	OK
V&V Charge Time	5.6435047

A.2 Comments