

V&V Reference Report

L2 ASCDS Version : 8.4.5

Observation 61991 - L2 Version 5
Chandra X-Ray Center

L2 Processing Date : Aug 30 2012

Contents

1	Front	2
2	OBI	3
2.1	OBI	3
2.1.1	Images	3
2.1.2	Bias	3
2.1.3	Parameters	4
2.1.4	Events	4
2.2	Compared Parameters	5
2.3	Star Slots	6
2.4	FID Slots	6
A	Summary	7
A.1	Status	7
A.2	Comments	7

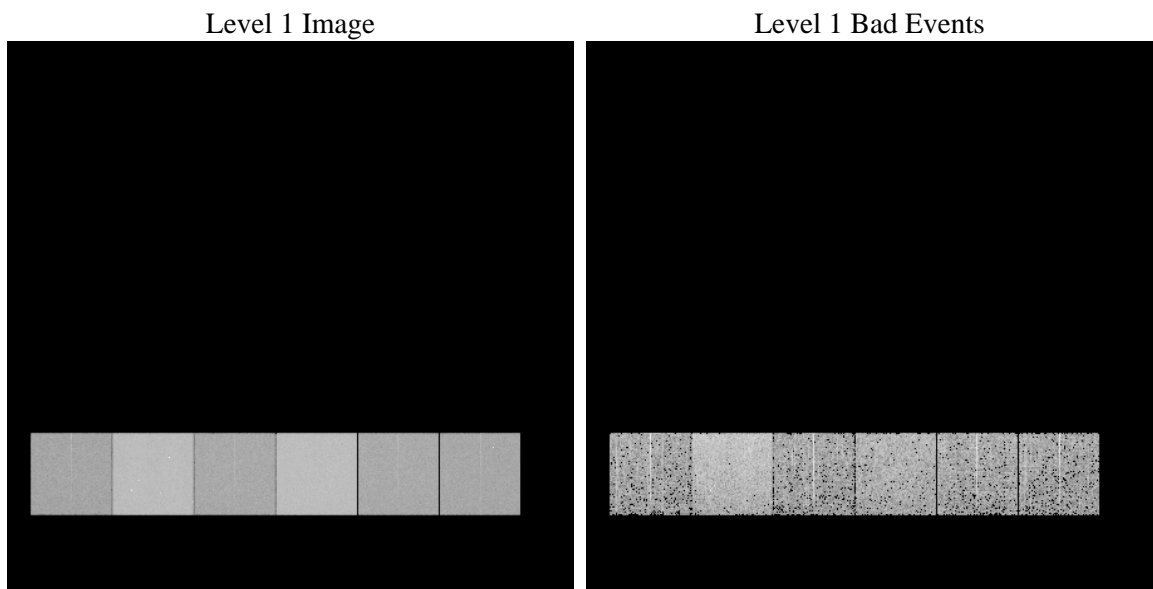
1 Front

seq_num	 	Sequence number
obs_id	61991	Observation id
title	ACIS-456789 diagnostics	Proposal title
observer	CHANDRA engineering request/realtime commanding	Principal investig
object	 	Source name
dtcycle	0	
cycle	P	events from which exps? Prim/Second/Both
ra_targ	0.0	Observer's specified target RA [deg]
dec_targ	0.0	Observer's specified target Dec [deg]
ra_nom	158.99276749052	Nominal RA [deg]
dec_nom	-54.376945080792	Nominal Dec [deg]
roll_nom	217.13930133663	Nominal Roll [deg]
revision	5	Processing version of data
ontime	4283.0063922405	Sum of GTIs [s]
livetime	4228.7723863851	Livetime [s]
ontime4	1857.1142002791	Sum of GTIs [s]
ontime5	4587.6174179167	Sum of GTIs [s]
ontime6	2012.6842195392	Sum of GTIs [s]
ontime7	4283.0063922405	Sum of GTIs [s]
ontime8	2064.5407298058	Sum of GTIs [s]
ontime9	1944.6224096417	Sum of GTIs [s]
l2events	1264976	Number of level 2 events

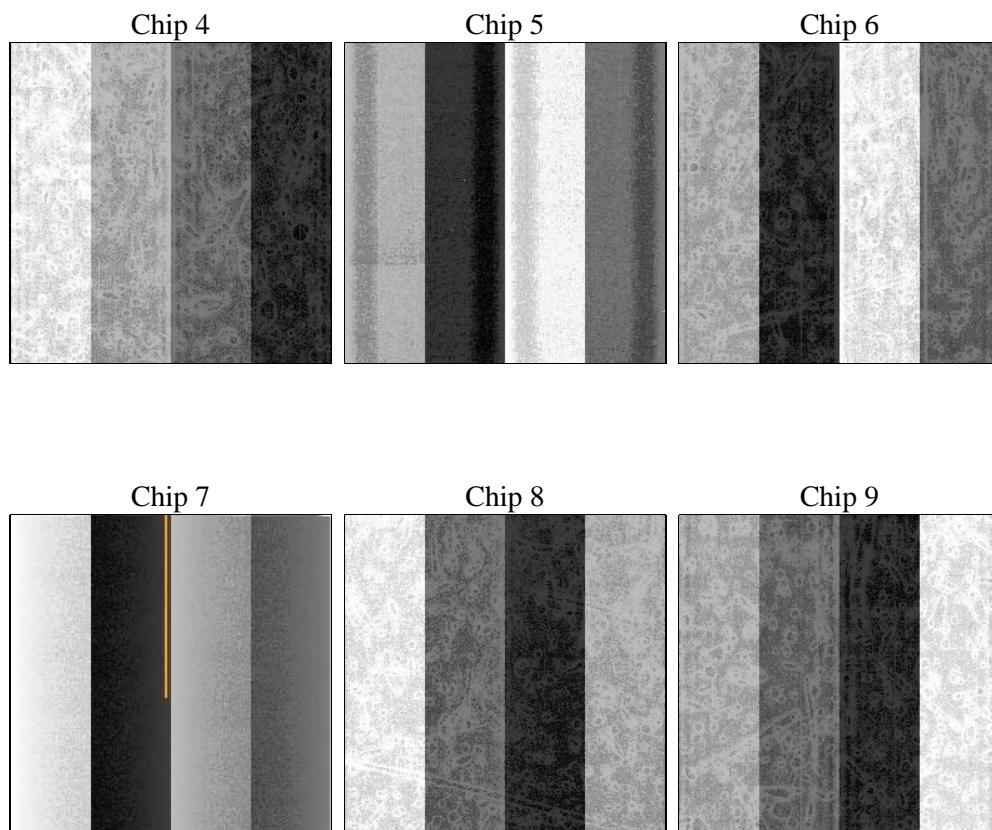
2 OBI

2.1 OBI

2.1.1 Images



2.1.2 Bias



2.1.3 Parameters

obi_num	1	Obi number	sched_exp_time	0.0	[s] Scheduled observation exposure time
ascdsver	8.4.5	Processing system revision	ontime	4283.0063922405	Sum of GTIs [s]
caldsver	4.5.1.1	 	ontime4	1857.1142002791	Sum of GTIs [s]
date	2012-08-30T20:52:48	Date and time of file creation	ontime5	4587.6174179167	Sum of GTIs [s]
revision	5	Processing version of data	ontime6	2012.6842195392	Sum of GTIs [s]
			ontime7	4283.0063922405	Sum of GTIs [s]
			ontime8	2064.5407298058	Sum of GTIs [s]
			ontime9	1944.6224096417	Sum of GTIs [s]
			l1events	1434994	Number of level 1 events

2.1.4 Events

	ccd 4	ccd 5	ccd 6	ccd 7	ccd 8	ccd 9		ccd 4	ccd 5	ccd 6	ccd 7	ccd 8	ccd 9
level 1 events	160392	357603	185168	370601	189104	172126	grade 0 events	81580	89794	92660	91225	95425	86053
rejected events	16416	29970	15750	19975	16876	15167		50%	25%	50%	24%	50%	49%
rejected %	10%	8%	8%	5%	8%	8%	grade 1 events	383	343	467	252	457	465
								0%	0%	0%	0%	0%	0%
							grade 2 events	25254	109318	29571	78128	30287	28258
								15%	30%	15%	21%	16%	16%
							grade 3 events	8970	23353	10238	35936	10756	9557
								5%	6%	5%	9%	5%	5%
							grade 4 events	9040	23225	10431	35869	10866	9719
								5%	6%	5%	9%	5%	5%
							grade 5 events	1141	6085	1328	4642	1418	1297
								0%	1%	0%	1%	0%	0%
							grade 6 events	19132	82156	26518	109719	24894	23372
								11%	22%	14%	29%	13%	13%
							grade 7 events	14892	23329	13955	14830	15001	13405
								9%	6%	7%	4%	7%	7%

2.2 Compared Parameters

Parameter	Planned	Actual	Parameter	Planned	Actual
Instrument	ACIS	ACIS	Obspar format version number	7	7
Detector	ACIS-456789	ACIS-456789	Obspar file type	PREDICTED	ACTUAL
Grating	NONE	NONE	Obspar update status	NONE	UPDATED
Data mode	FAINT	FAINT	On-chip summing requested	N	N
Observation mode	SECONDARY	SECONDARY	Subarray requested	NONE	NONE
[deg] Pointing RA	0	158.9927674905176	Alternating exposures requested	N	N
[deg] Pointing Dec	0	-54.37694508079167	[s] Primary exposure time	3.2	3.2
[deg] Pointing Roll	0.0	217.1393013366254			
[mm] SIM focus pos	-0.684267	-0.6828225247311905			
[mm] SIM defocus	0	0.8505141146731063			
[mm] SIM translation stage pos	-190.132523	250.466033080201			
[mm] SIM translation stage offset	0	-0.01005468664627074			
[s] Observation start time (MET)	80406116.974162	80406115.949155			
Observation start date	2000-07-19T15:01:57	2000-07-19T15:01:55			
[s] Observation end time (MET)	80450825.425823	80450824.400822			
Observation end date	2000-07-20T03:27:05	2000-07-20T03:27:04			
Read mode	TIMED	TIMED			

2.3 Star Slots

2.4 FID Slots

A Summary

A.1 Status

V&V Scientist	Jen Lauer
V&V Date (YYYY-MM-DD)	2012.09.05
V&V Edition	1
V&V Disposition and Status	OK
V&V Charge Time	4.2830063922405

A.2 Comments