

V&V Reference Report

L2 ASCDS Version : 8.4.5

Observation 61986 - L2 Version 4
Chandra X-Ray Center

L2 Processing Date : Aug 30 2012

Contents

1	Front	2
2	OBI	3
2.1	OBI	3
2.1.1	Images	3
2.1.2	Bias	3
2.1.3	Parameters	4
2.1.4	Events	4
2.2	Compared Parameters	5
2.3	Star Slots	6
2.4	FID Slots	6
A	Summary	7
A.1	Status	7
A.2	Comments	7

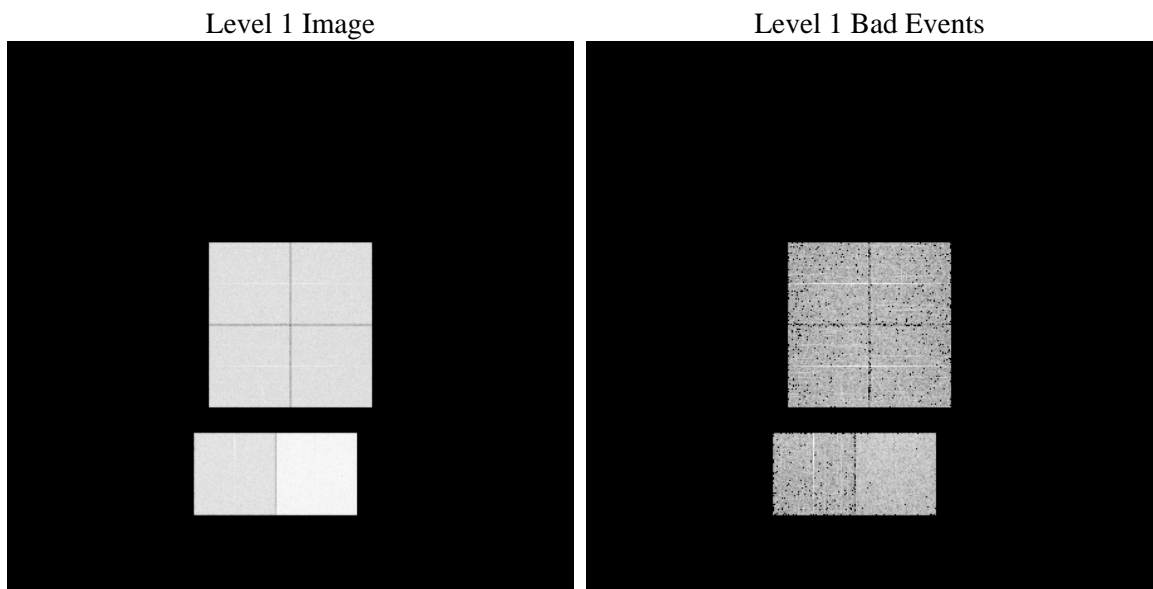
1 Front

seq_num	 	Sequence number
obs_id	61986	Observation id
title	ACIS-012367 diagnostics	Proposal title
observer	CHANDRA engineering request/realtime commanding	Principal investig
object	 	Source name
dtcycle	0	
cycle	P	events from which exps? Prim/Second/Both
ra_targ	0.0	Observer's specified target RA [deg]
dec_targ	0.0	Observer's specified target Dec [deg]
ra_nom	171.13976209758	Nominal RA [deg]
dec_nom	-47.917930977459	Nominal Dec [deg]
roll_nom	223.80535590004	Nominal Roll [deg]
revision	4	Processing version of data
ontime	5392.3488097042	Sum of GTIs [s]
livetime	5324.0676421931	Livetime [s]
ontime0	2439.3263453394	Sum of GTIs [s]
ontime1	2416.6801751852	Sum of GTIs [s]
ontime2	2351.9006446898	Sum of GTIs [s]
ontime3	2349.0482133031	Sum of GTIs [s]
ontime6	2546.4036254585	Sum of GTIs [s]
ontime7	5392.3488097042	Sum of GTIs [s]
l2events	1357780	Number of level 2 events

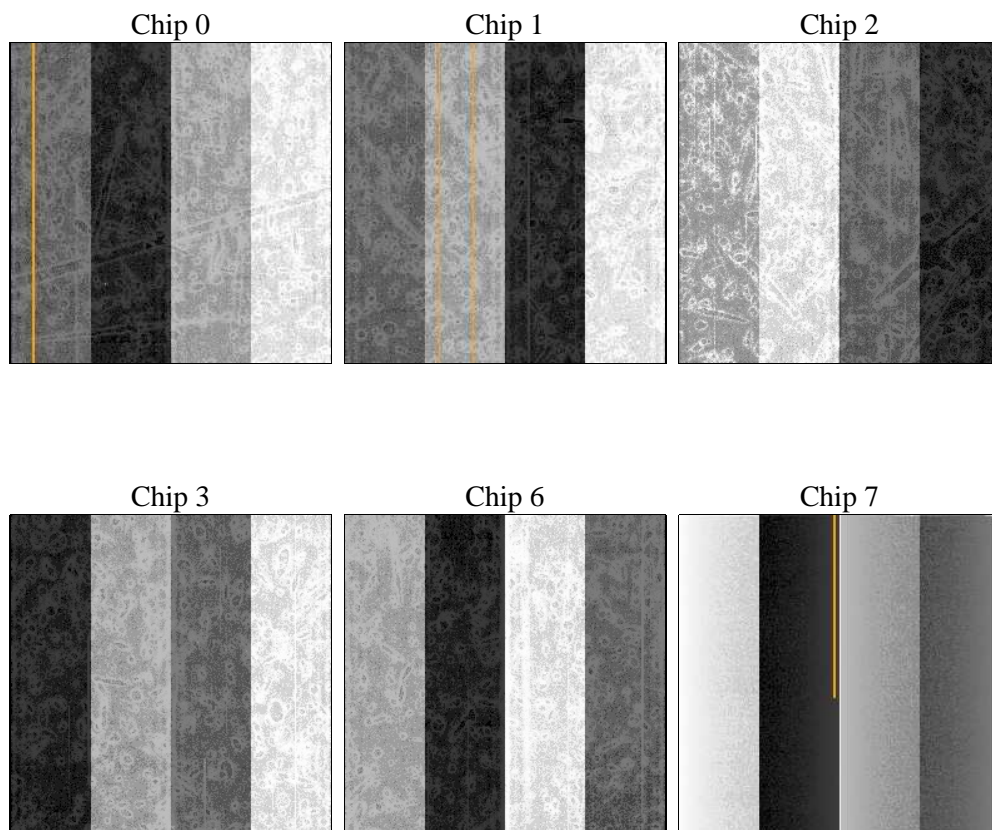
2 OBI

2.1 OBI

2.1.1 Images



2.1.2 Bias



2.1.3 Parameters

obi_num	0	Obi number	sched_exp_time	0.0	[s] Scheduled observation exposure time
ascdsver	8.4.5	Processing system revision	ontime	5392.3488097042	Sum of GTIs [s]
caldbver	4.5.1.1	 	ontime0	2439.3263453394	Sum of GTIs [s]
date	2012-08-30T22:21:47	Date and time of file creation	ontime1	2416.6801751852	Sum of GTIs [s]
revision	4	Processing version of data	ontime2	2351.9006446898	Sum of GTIs [s]
			ontime3	2349.0482133031	Sum of GTIs [s]
			ontime6	2546.4036254585	Sum of GTIs [s]
			ontime7	5392.3488097042	Sum of GTIs [s]
			l1events	1547258	Number of level 1 events

2.1.4 Events

	ccd 0	ccd 1	ccd 2	ccd 3	ccd 6	ccd 7		ccd 0	ccd 1	ccd 2	ccd 3	ccd 6	ccd 7
level 1 events	213155	212468	210124	209100	234658	467753	grade 0 events	108050	107826	106750	106932	117246	114679
rejected events	19620	19795	21110	20205	21066	29997		50%	50%	50%	51%	49%	24%
rejected %	9%	9%	10%	9%	8%	6%	grade 1 events	554	565	535	578	555	299
								0%	0%	0%	0%	0%	0%
							grade 2 events	34781	34065	33289	33330	37395	98148
								16%	16%	15%	15%	15%	20%
							grade 3 events	12354	12555	12111	12143	13435	45571
								5%	5%	5%	5%	5%	9%
							grade 4 events	12384	12092	12100	12092	13290	44794
								5%	5%	5%	5%	5%	9%
							grade 5 events	1374	1370	1383	1430	1572	5845
								0%	0%	0%	0%	0%	1%
							grade 6 events	28205	28165	27069	26481	34089	139580
								13%	13%	12%	12%	14%	29%
							grade 7 events	15453	15830	16887	16114	17076	18837
								7%	7%	8%	7%	7%	4%

2.2 Compared Parameters

Parameter	Planned	Actual
Instrument	ACIS	ACIS
Detector	ACIS-012367	ACIS-012367
Grating	NONE	NONE
Data mode	FAINT	FAINT
Observation mode	SECONDARY	SECONDARY
[deg] Pointing RA	0	171.13976209758
[deg] Pointing Dec	0	-47.91793097745903
[deg] Pointing Roll	0.0	223.8053559000369
[mm] SIM focus pos	-0.782348	-0.6828225247311905
[mm] SIM defocus	0	0.8505141146731063
[mm] SIM translation stage pos	-233.592463	250.466033080201
[mm] SIM translation stage offset	0	-0.01005468664627074
[s] Observation start time (MET)	80911464.286	80911463.51794299
Observation start date	2000-07-25T11:24:24	2000-07-25T11:24:23
[s] Observation end time (MET)	80921974.63699999	80921973.868334
Observation end date	2000-07-25T14:19:35	2000-07-25T14:19:33
Read mode	TIMED	TIMED

Parameter	Planned	Actual
Obspar format version number	7	7
Obspar file type	PREDICTED	ACTUAL
Obspar update status	NONE	UPDATED
On-chip summing requested	N	N
Subarray requested	NONE	NONE
Alternating exposures requested	N	N
[s] Primary exposure time	0.000000	3.2

2.3 Star Slots

2.4 FID Slots

A Summary

A.1 Status

V&V Scientist	Jen Lauer
V&V Date (YYYY-MM-DD)	2012.09.05
V&V Edition	1
V&V Disposition and Status	OK
V&V Charge Time	5.3923488097042

A.2 Comments