

# V&V Reference Report

## L2 ASCDS Version : 7.6.10

Observation 61980 - L2 Version 001  
Chandra X-Ray Center

L2 Processing Date : Jun 1 2007

## Contents

<b>1</b>	<b>Front</b>	<b>2</b>
<b>2</b>	<b>OBI</b>	<b>3</b>
2.1	OBI . . . . .	3
2.1.1	Images . . . . .	3
2.1.2	Bias . . . . .	3
2.1.3	Parameters . . . . .	4
2.1.4	Events . . . . .	4
2.2	Compared Parameters . . . . .	5
2.3	Star Slots . . . . .	6
2.4	FID Slots . . . . .	6
<b>A</b>	<b>Summary</b>	<b>7</b>
A.1	Status . . . . .	7
A.2	Comments . . . . .	7

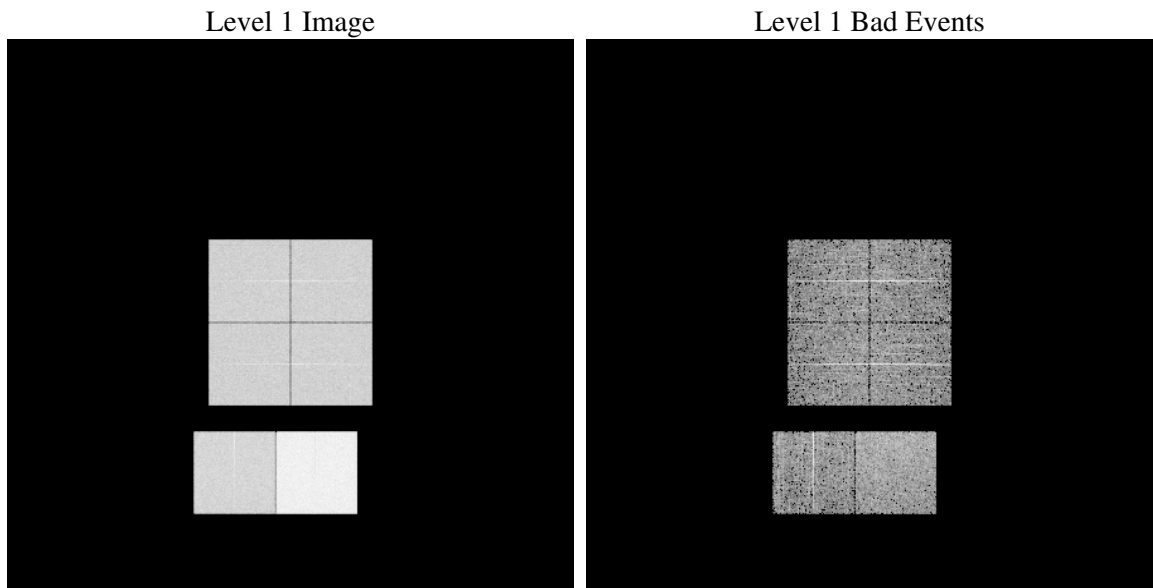
# 1 Front

seq_num	&#160
obs_id	61980
title	ACIS-012367 diagnostics
observer	CHANDRA engineering request/realtime commanding
object	&#160
dtcycle	0
cycle	P
ra_targ	0.0
dec_targ	0.0
ra_nom	171.13696474002
dec_nom	-47.917440327749
roll_nom	219.9871981062
revision	3
ontime	5529.2655849606
livetime	5459.2506947998
ontime0	2450.3556137979
ontime1	2443.9146933854
ontime2	2353.2067831159
ontime3	2401.6580137461
ontime6	2622.253893137
ontime7	5529.2655849606
l2events	1373366

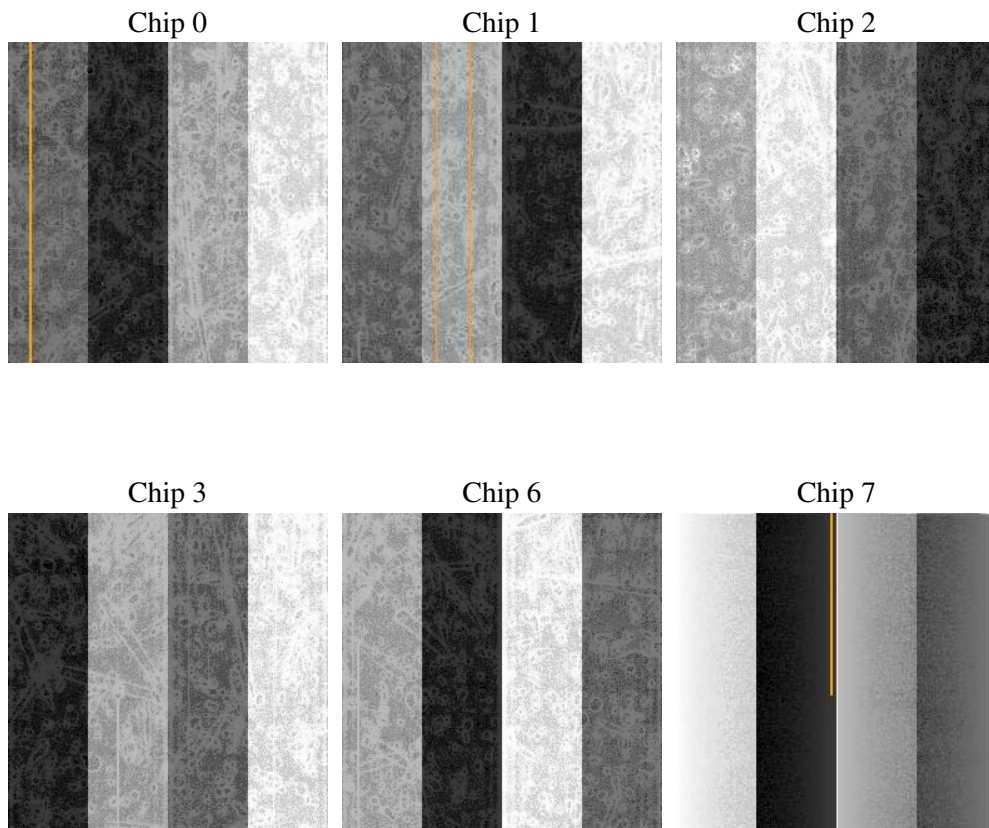
## 2 OBI

### 2.1 OBI

#### 2.1.1 Images



#### 2.1.2 Bias



### 2.1.3 Parameters

obi_num	0
ascdsver	7.6.10
caldbver	3.4.0
date	2007-06-01T08:06:57
revision	3

sched_exp_time	0.0
ontime	5529.2655849606
ontime0	2450.3556137979
ontime1	2443.9146933854
ontime2	2353.2067831159
ontime3	2401.6580137461
ontime6	2622.253893137
ontime7	5529.2655849606
l1events	1553696

### 2.1.4 Events

	ccd 0	ccd 1	ccd 2	ccd 3	ccd 6	ccd 7
level 1 events	212252	211408	207507	211056	237550	473923
rejected events	18962	18315	18701	19527	20223	26700
rejected %	8%	8%	9%	9%	8%	5%

	ccd 0	ccd 1	ccd 2	ccd 3	ccd 6	ccd 7
grade 0 events	106695	106662	105090	107536	119072	115493
	50%	50%	50%	50%	50%	24%
grade 1 events	542	529	582	560	595	294
	0%	0%	0%	0%	0%	0%
grade 2 events	34213	34319	33201	33493	37250	99359
	16%	16%	15%	15%	15%	20%
grade 3 events	12107	12460	11894	12012	13374	45464
	5%	5%	5%	5%	5%	9%
grade 4 events	12357	11988	11866	12266	13378	45325
	5%	5%	5%	5%	5%	9%
grade 5 events	1535	1439	1432	1431	1726	6156
	0%	0%	0%	0%	0%	1%
grade 6 events	28170	27898	26977	26488	34509	141810
	13%	13%	13%	12%	14%	29%
grade 7 events	16633	16113	16465	17270	17646	20022
	7%	7%	7%	8%	7%	4%

## 2.2 Compared Parameters

Parameter	Planned	Actual	Parameter	Planned	Actual
Instrument	ACIS	ACIS	Obspar format version number	6	6
Detector	ACIS-012367	ACIS-012367	Obspar file type	PREDICTED	ACTUAL
Grating	NONE	NONE	Obspar update status	NONE	UPDATED
Data mode	FAINT	FAINT	On-chip summing requested	N	N
Observation mode	SECONDARY	SECONDARY	Subarray requested	NONE	NONE
Pointing RA	0	171.1369647400248	Alternating exposures requested	N	N
Pointing Dec	0	-47.91744032774901	Primary exposure time	3.2	3.2
Pointing Roll	0.0	219.987198106197			
SIM focus pos (mm)	-0.782348	-0.6828225247311905			
SIM defocus (mm)	0	0.8505141146731063			
SIM translation stage pos (mm)	-233.592463	250.4635187648994			
SIM translation stage offset (mm)	0	-0.007540371344731511			
Observation start time	81365795.55330101	81365794.78483801			
Observation start date	2000-07-30T17:36:36	2000-07-30T17:36:34			
Observation end time	81376305.90369201	81376305.13522901			
Observation end date	2000-07-30T20:31:46	2000-07-30T20:31:45			
Read mode	TIMED	TIMED			

## **2.3 Star Slots**

## **2.4 FID Slots**

# A Summary

## A.1 Status

V&V Scientist	Beth Sundheim
V&V Date (YYYY-MM-DD)	2007.06.01
V&V Edition	1
V&V Disposition and Status	OK
V&V Charge Time	5.52926558

## A.2 Comments

Focal plane temperature is warmer than -118.7 C degrees during the first ~3 ksec of this observation. The ACIS spectral response calibration for the front-illuminated chips is less accurate at these warmer temperatures than it is at -119.7 C. The back-illuminated chips are not affected at the focal plane temperatures recorded for this observation.